



Richard Harris & Associates, Inc.

Expert Real Estate Services™



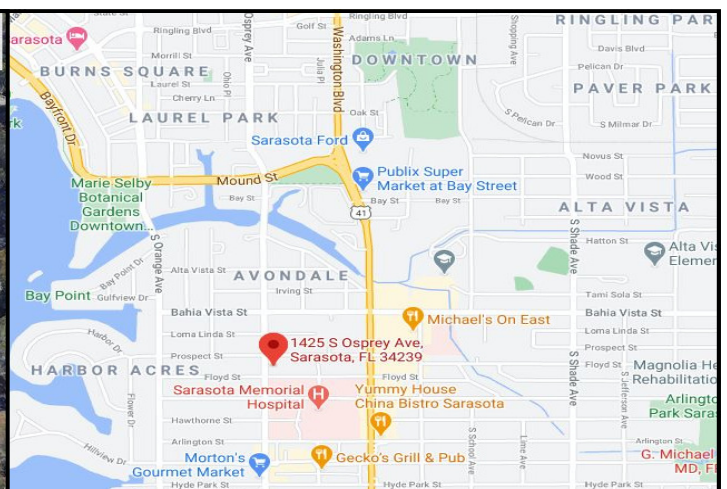
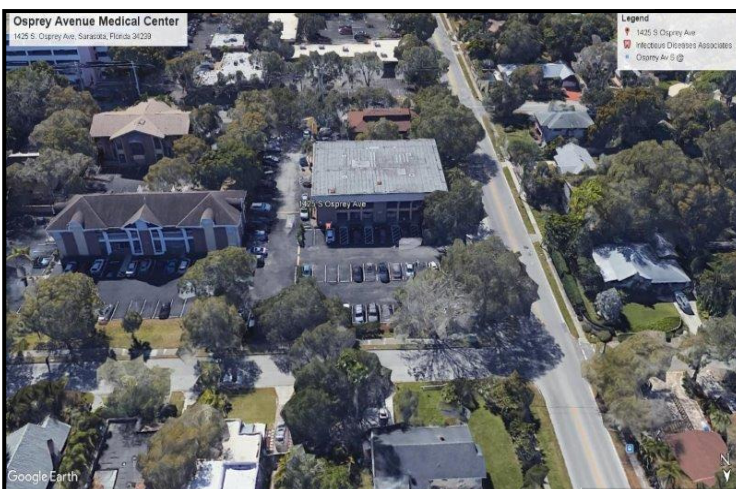
NET LEASE MEDICAL OFFICE BUILDING FOR SALE

OSPREY AVENUE MEDICAL CENTER 1425 S. Osprey Ave, Sarasota, FL Property Information

- ◆ 2-Story 13,478 SF Building on a 41,306 SF Site
- ◆ NNN Lease - Established Medical Group Tenant
- ◆ Zoning: OPB-1 (Office, Professional Business 1)
- ◆ Land Use: Neighborhood Office
- ◆ Desirable Location - Sarasota Memorial Hospital
- ◆ **Great Investment Opportunity!**

Offered at \$3,695,000

The information presented herein has been obtained from sources deemed reliable; however, Richard Harris & Associates, Inc. and/or their agents, are not responsible for errors, omissions, changes, withdrawal, or prior sale without providing notice.



Richard Harris, CCIM

Licensed Real Estate Broker
(727) 480-4988 (Cell)

Cynthia Ceraolo Harris

Licensed Real Estate Broker-Associate



Richard Harris & Associates, Inc.

3060 Alternate 19 North, Suite B-20
Palm Harbor, FL 34683

(727) 726-3100

E-Mail: RHA@RHArealestate.com

[www. RHArealestate.com](http://www.RHArealestate.com)