

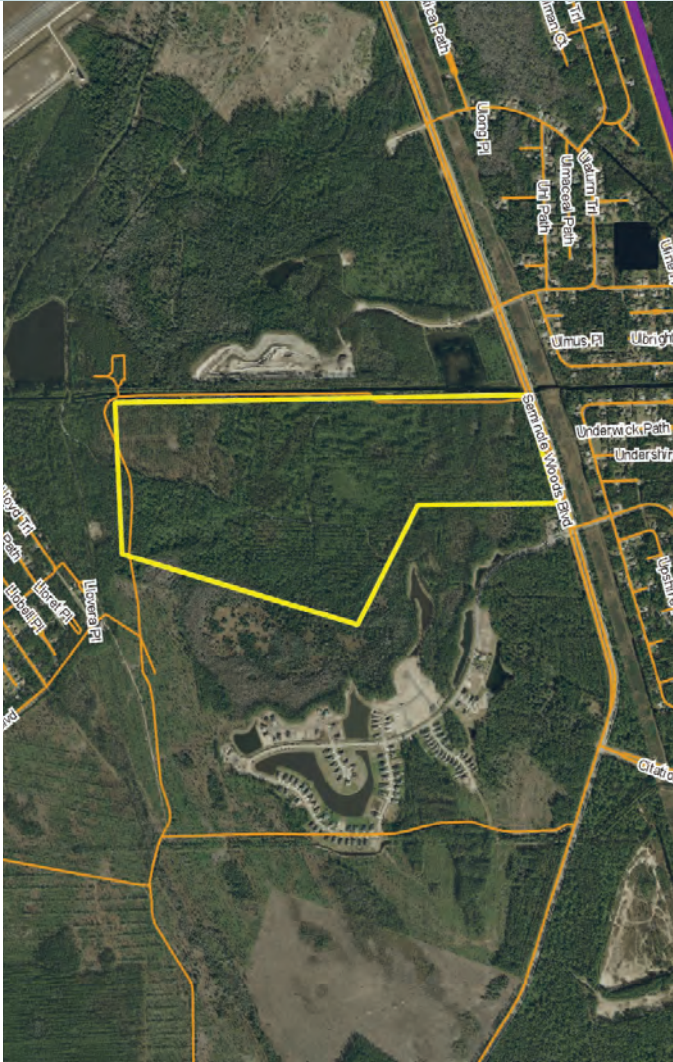
COMMERCIAL & RESIDENTIAL LAND

228.84± acres

City of Palm Coast, Flagler County, FL

**UNDER
CONTRACT**

LAND FOR SALE



LOCATION

Located on Seminole Woods Blvd. in the City of Palm Coast. Just a 5 minute drive to I-95 access. This property is a 10-minute drive from the beautiful Flagler Beach.

SIZE

228.84± acres

PRICE

\$5,721,000 or \$25,000/acre

ZONING/FLU

SFR-1 - Residential - up to 7 units/gross upland acre (202.3ac)/Residential
Com-2 - Commercial (26.5ac)/Commercial

ROAD FRONTAGE

1,327'± on Seminole Woods Boulevard

Offering subject to errors, omission, prior sale or withdrawal without notice.

— Commercial Real Estate Investments | Management | Brokerage | Development | Land

Maury L. Carter & Associates, Inc.
407-422-3144 | www.maurycarter.com

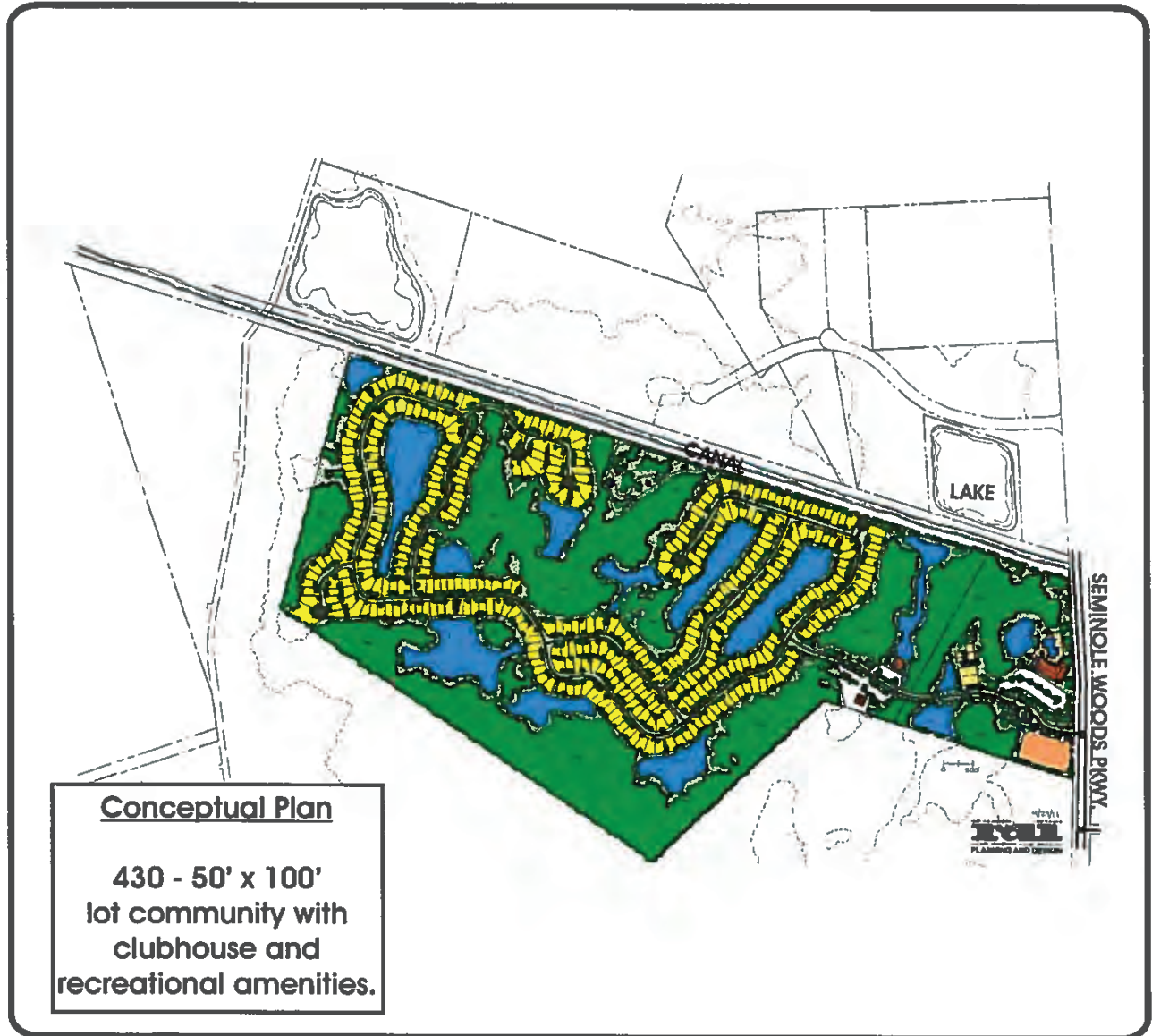


COMMERCIAL & RESIDENTIAL LAND

228.84± acres

City of Palm Coast, Flagler County, FL

**UNDER
CONTRACT**



CONCEPT PLAN

— Commercial Real Estate Investments | Management | Brokerage | Development | Land

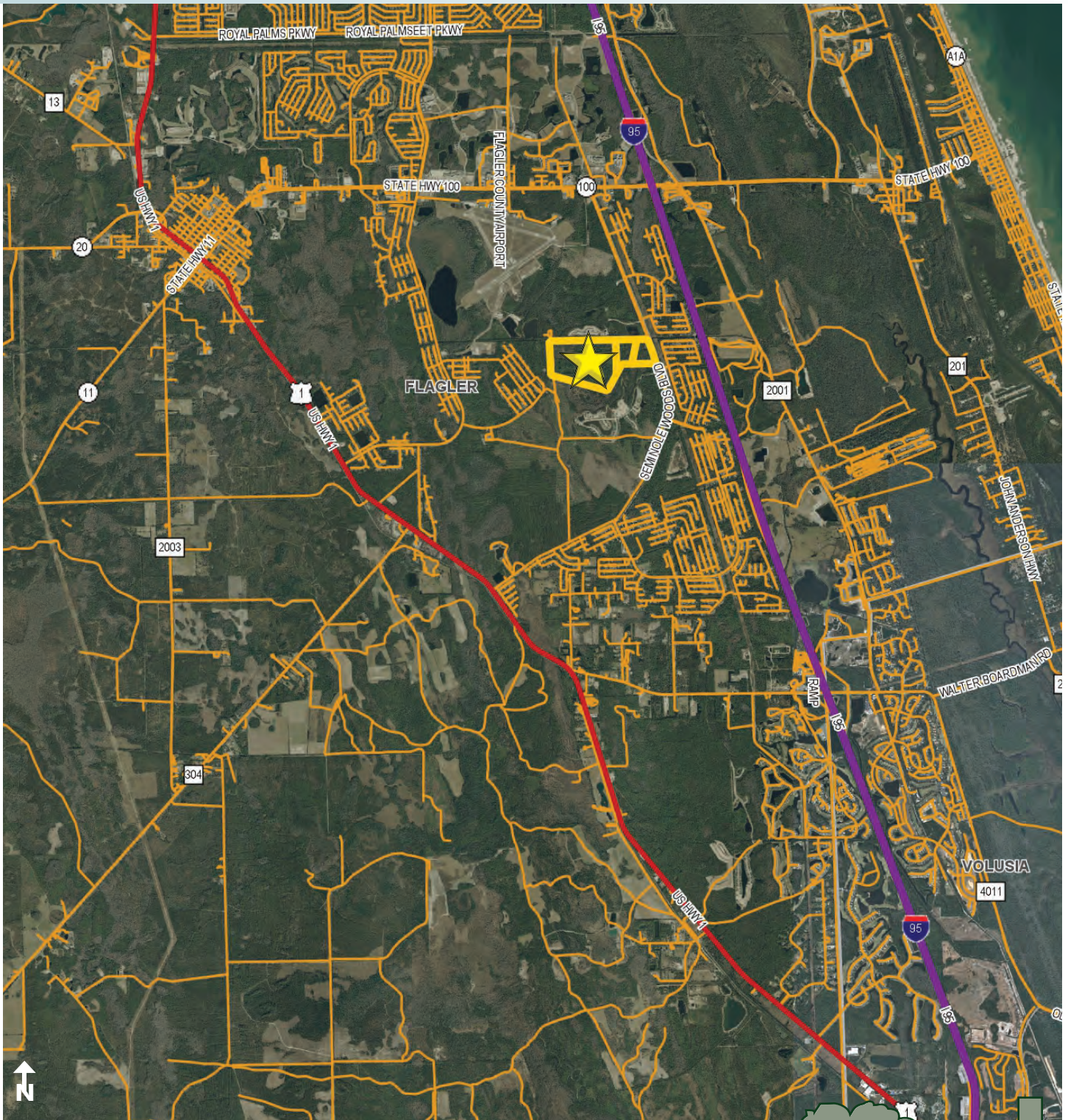
Maury L. Carter & Associates, Inc.
407-422-3144 | www.maurycarter.com



COMMERCIAL & RESIDENTIAL LAND

228.84± acres

City of Palm Coast, Flagler County, FL



LOCATION MAP

— Commercial Real Estate Investments | Management | Brokerage | Development | Land

Maury L. Carter & Associates, Inc.
407-422-3144 | www.maurycarter.com

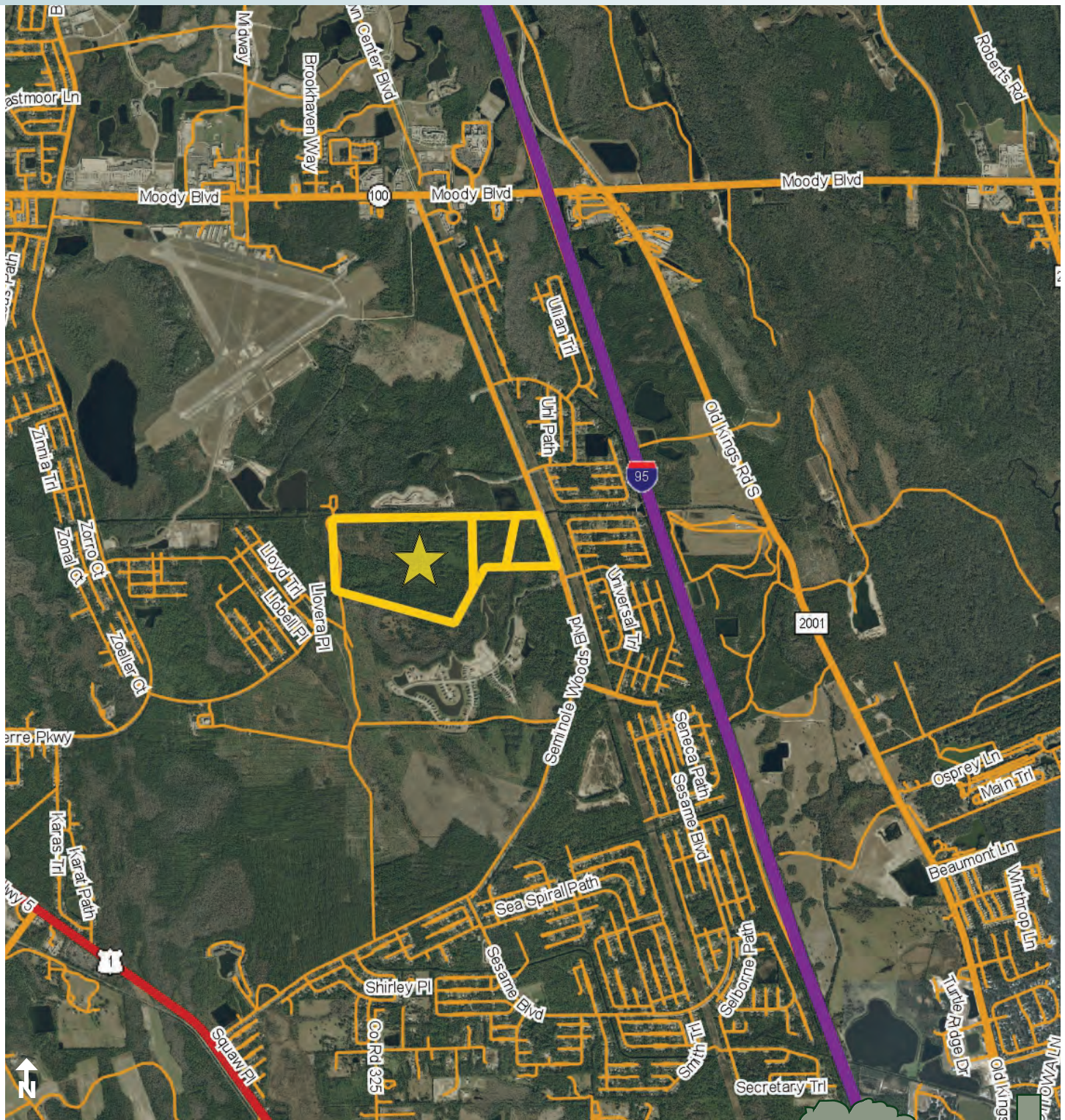


Maury L. Carter & Associates, Inc.SM
Licensed Real Estate Broker

COMMERCIAL & RESIDENTIAL LAND

228.84± acres

City of Palm Coast, Flagler County, FL



VICINITY MAP

— Commercial Real Estate Investments | Management | Brokerage | Development | Land

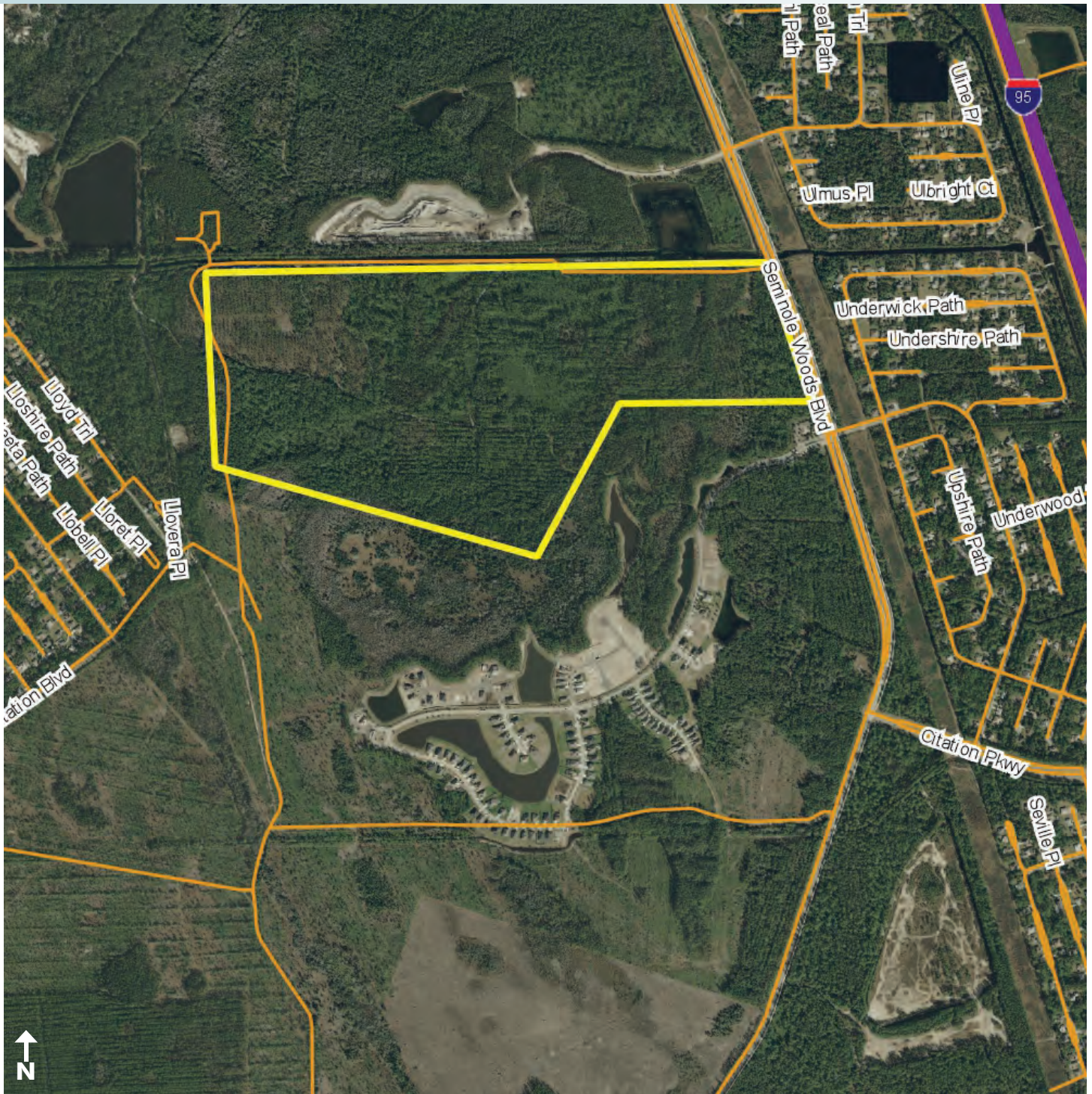
Maury L. Carter & Associates, Inc.
407-422-3144 | www.maurycarter.com



COMMERCIAL & RESIDENTIAL LAND

228.84± acres

City of Palm Coast, Flagler County, FL



PROPERTY MAP

— Commercial Real Estate Investments | Management | Brokerage | Development | Land

Maury L. Carter & Associates, Inc.
407-422-3144 | www.maurycarter.com

