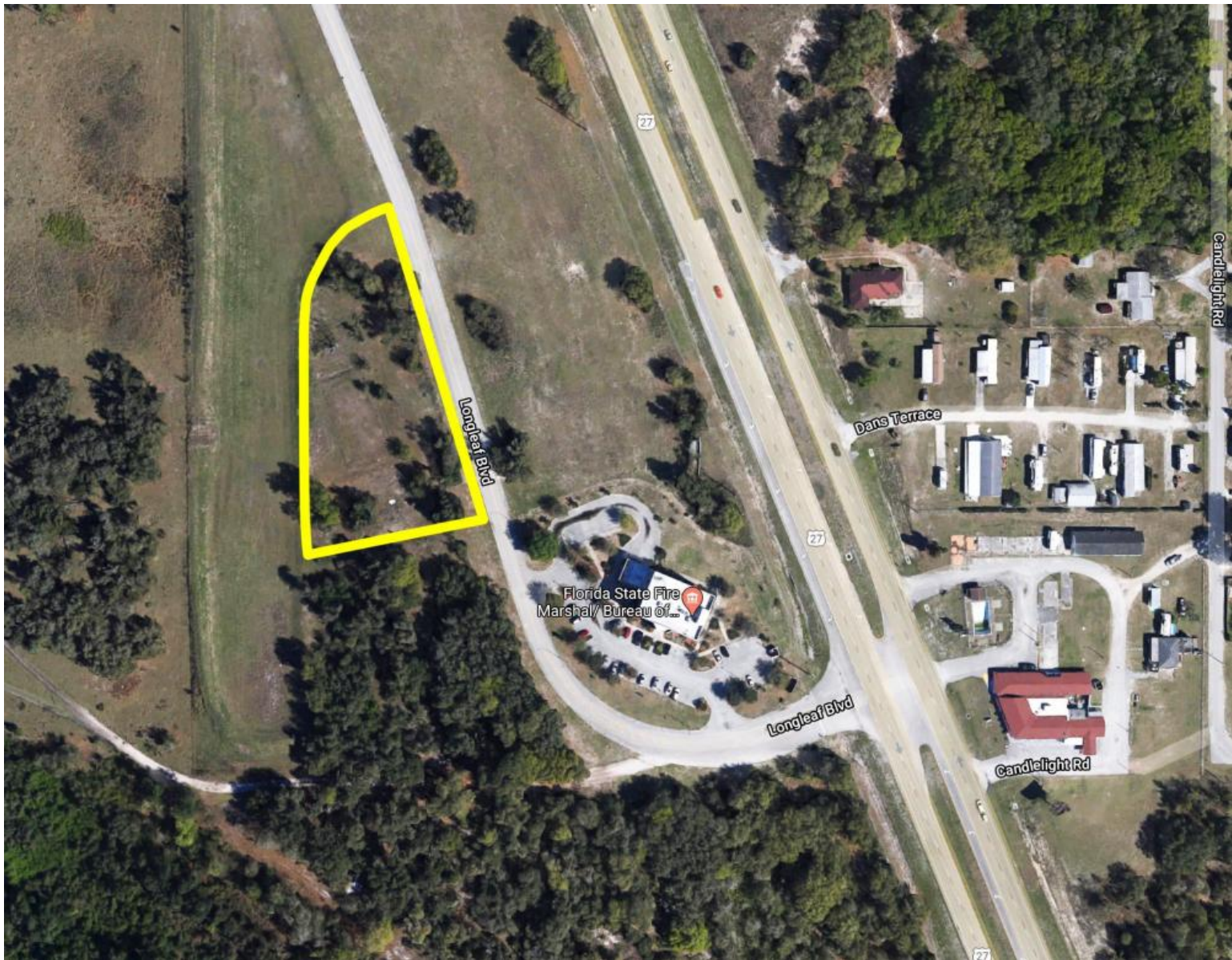


**1.69 AC VACANT  
INDUSTRIAL LAND,  
LONGLEAF BUSINESS  
PARK**  
**1.69 +/- Acres**  
**Polk County, FL**  
**\$118,300**

**NATIONAL  
LAND  
REALTY®**

**NEW LISTING**



**National Land Realty**  
141 5th Street NW  
Suite 202  
Winter Haven, FL 33881  
[www.NationalLand.com](http://www.NationalLand.com)



**Erin Carden, CCIM**  
Office: 863.293.5600  
Cell: 863.604.0564  
Fax: 834.331.1610  
[Ecarden@NationalLand.com](mailto:Ecarden@NationalLand.com)



**Trevor C. Williams, MA**  
Office: 863.293.5600  
Cell: 863.289.7222  
Fax: 864.331.1610  
[twilliams@nationalland.com](mailto:twilliams@nationalland.com)

The information herein is from sources deemed reliable, however the accuracy is not guaranteed.  
National Land Realty assumes no liability for error, omissions or investment results.



**OVERVIEW:**

1.69 Acre site located within the Longleaf Business Park in Lake Wales. This business park sits right on US Hwy 27 just 2 miles south of State Rd. 60. This central Florida location makes it ideal for warehouse, distribution, professional and medical services and even light manufacturing is allowed. Utilities available include city water, sewer, natural gas and fiber optics.

**PARCEL #/ID:** 273014927041000010

**TAXES:** \$585/year (2020)

**ADDRESS:**

2250 Longleaf Blvd.  
Lake Wales, FL 33859

**LOCATION:**

From US Hwy 27 and State Rd. 60 in Lake Wales, proceed south on Hwy 27 approximately 2.3 miles to Longleaf Blvd. Turn R onto Longleaf Blvd. Site is approximately 0.1 miles on left side of the road.

**ACREAGE BREAKDOWN:**

1.69 +/- acres of Industrial Development Land located within the Longleaf Business Park.



**PROPERTY HIGHLIGHTS:**

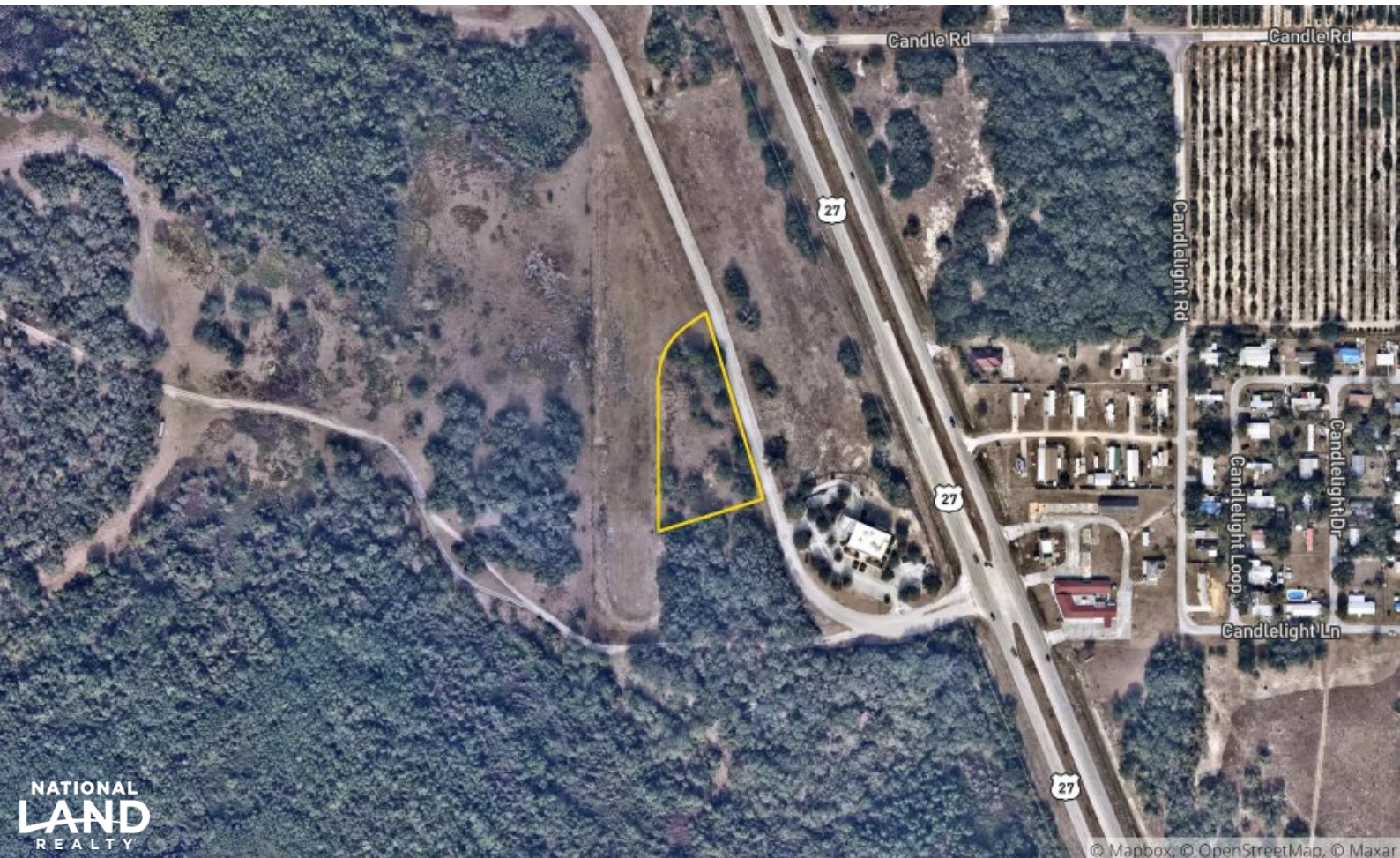
- Industrial Business Park location
- Central FL Location
- Utilities Available
- 9 miles from CSX Intermodal Facility

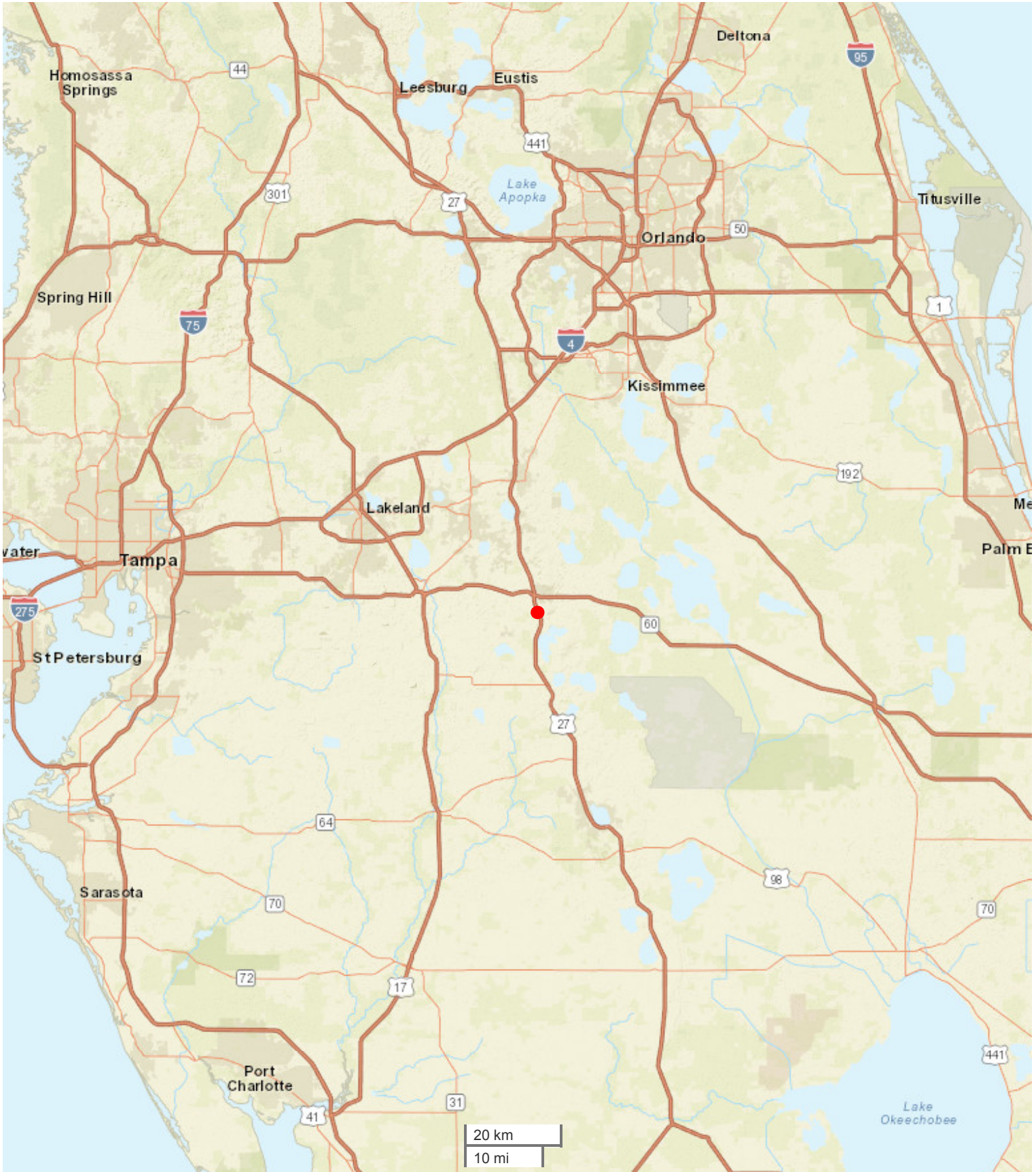
**LEGAL DESCRIPTION:**

LONGLEAF BUSINESS PARK PB 116 PGS 24-26  
LOT 1

**VIEW FULL LISTING:**

[www.nationalland.com/viewlisting.php?listingid=2029805](http://www.nationalland.com/viewlisting.php?listingid=2029805)

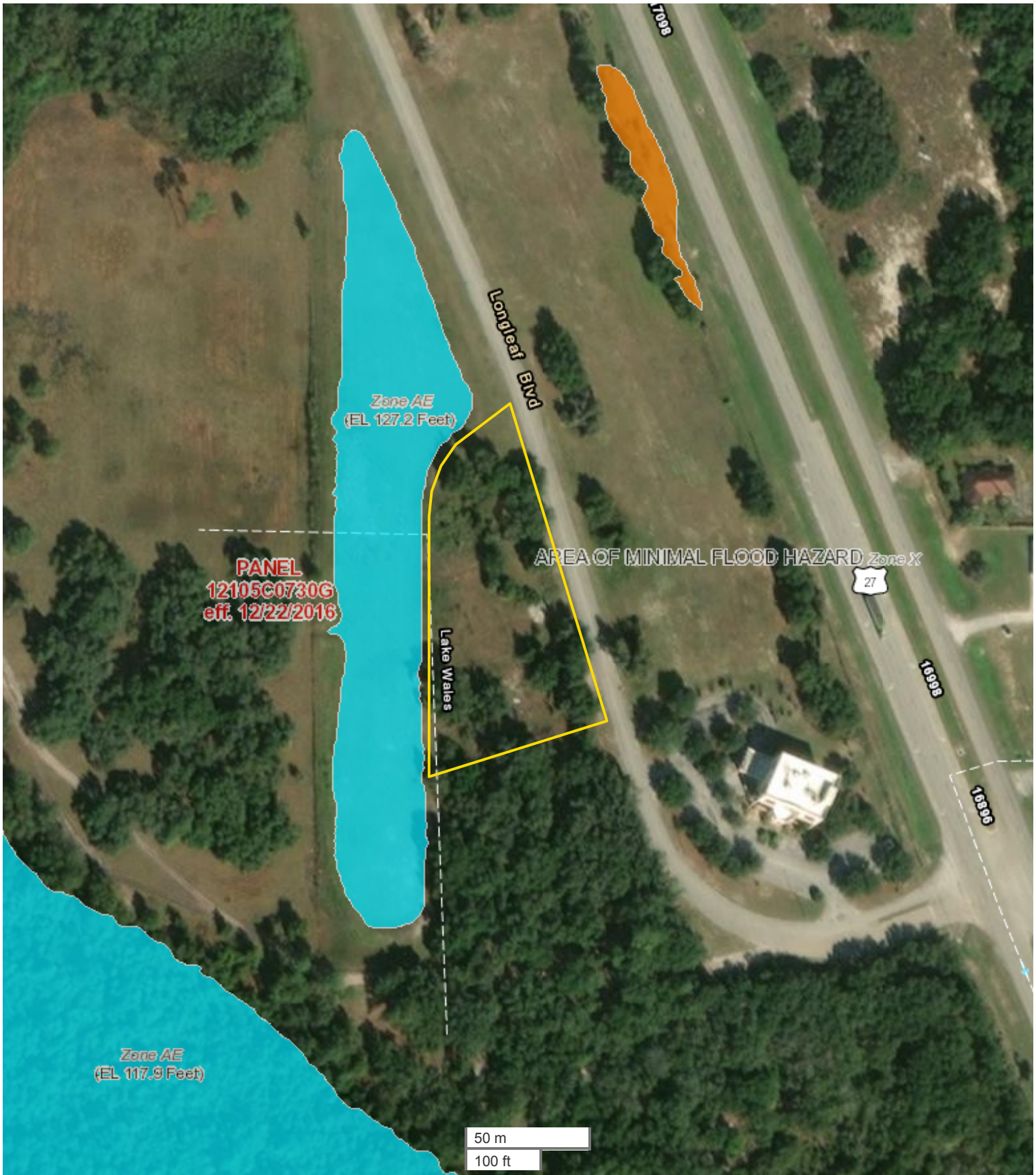




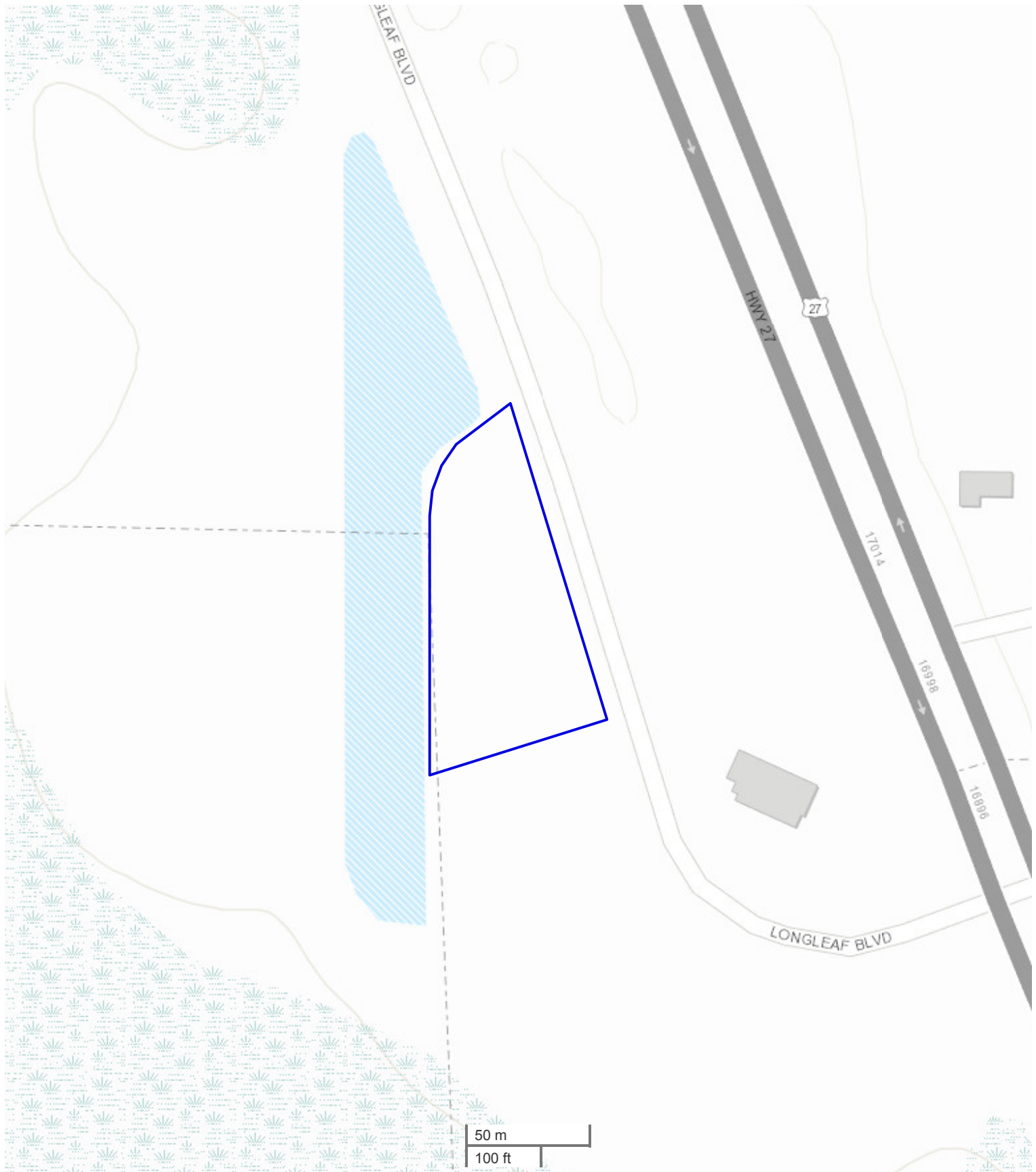
All boundary lines noted in pictures, aerials or maps should be considered estimates and not relied on as legal documents or descriptions.



All boundary lines noted in pictures, aerials or maps should be considered estimates and not relied on as legal documents or descriptions.



All boundary lines noted in pictures, aerials or maps should be considered estimates and not relied on as legal documents or descriptions.



All boundary lines noted in pictures, aerials or maps should be considered estimates and not relied on as legal documents or descriptions.