

1.6 ACRES COMMERCIAL LAND AVAILABLE

SALE PRICE:
\$750,000

ACRES:
1.6

ZONING:
Commercial

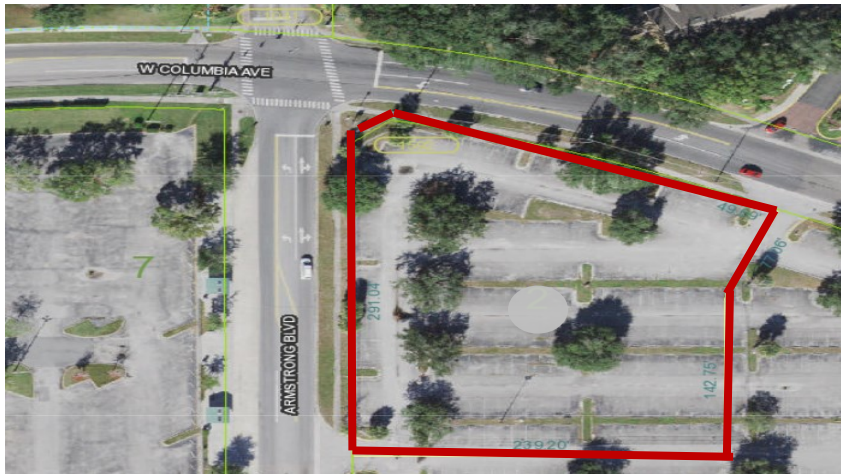
TRAFFIC COUNTS:
15,000 on Columbia Ave
3,400 on Armstrong Blvd

ADDRESS:
Armstrong Blvd & Columbia Ave
Kissimmee, FL 34741

LOCATION:
Property located on SE corner of Armstrong
Blvd and Columbia Ave

SUMMARY:
Commercial corner lot, located in a high
growth corridor in Kissimmee, FL.

400' Frontage on Columbia Ave
300' Frontage on Armstrong Blvd



JARAMILLO COMMERCIAL
REAL ESTATE SERVICES

Sell your commercial property for the most amount of money in the least amount of time with the least amount of headaches

FRANCISCO JARAMILLO, MBA, CCIM
Principal/Managing Broker
407.683.4444 Mobile
Francisco@JaraCRE.com

LESLIE BURKE
Director
352.327.1084 Mobile
Leslie@JaraCRE.com

RICARDO A. GARCIA, MICP
Associate
407.403.1208 Mobile
Ricardo@JaraCRE.com