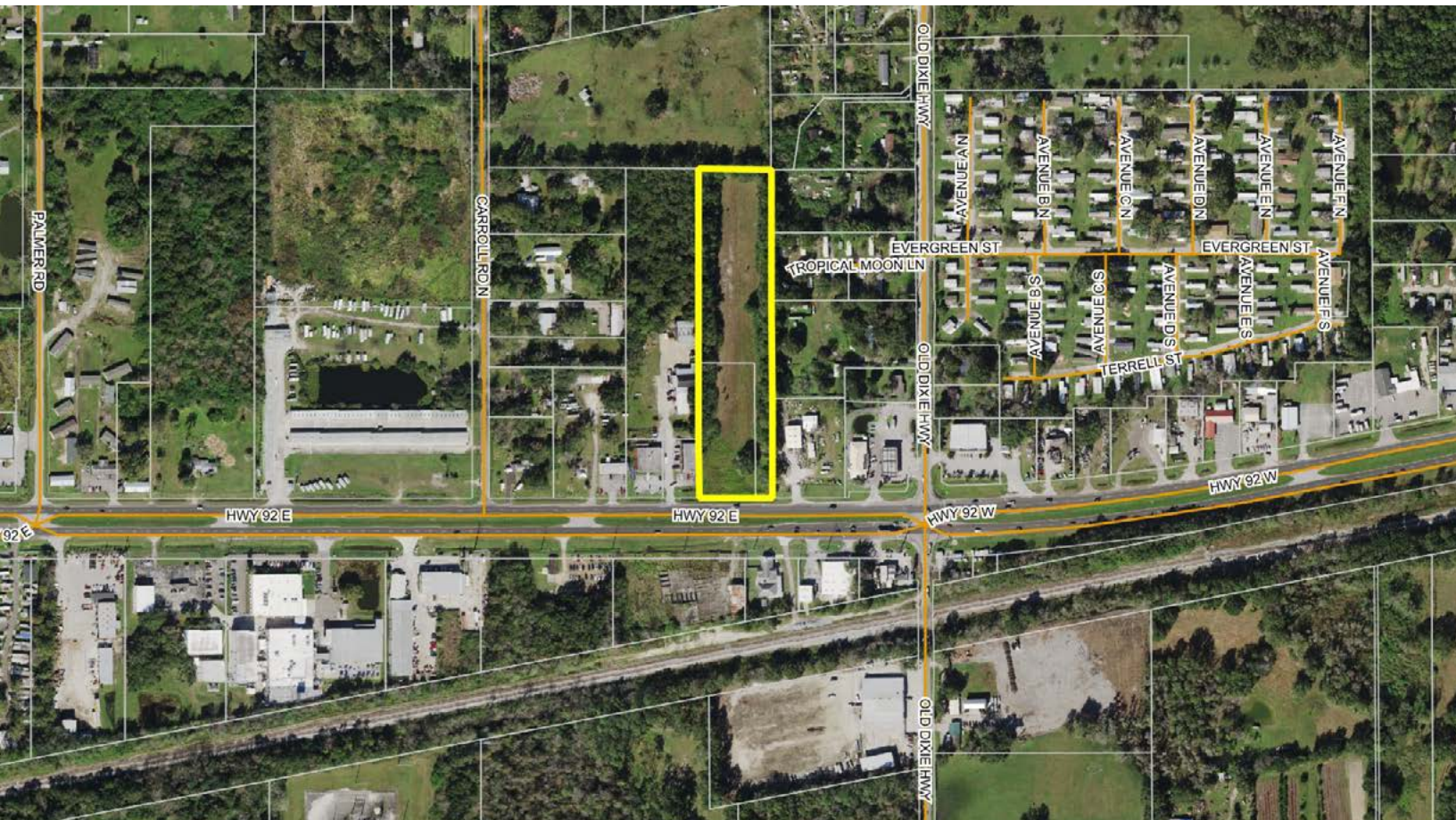


LAKELAND MIXED-USE ACREAGE

LAKELAND, FL | POLK COUNTY

5 ± AC





SPECIFICATIONS & FEATURES

Acreege: 5 ± AC

Sale Price: \$225,000

Price per Acre: \$45,000

Site Address: US-92 East, Lakeland, FL 33801

County: Polk

Acreege: 4.97 acres

Road Frontage: 220 FT ± on US-92

Predominant Soil Types: Paisley Fine Sand and Arents Urban

Uplands/Wetlands: 100% uplands

Zoning: FLU (Polk County)

- 3.41 acres of RS (Residential Suburban)
- 1.56 acres of LCC (Linear Corridor Commercial)
- RS allows 1DU/5AC but a greater density is allowed conditionally
- LCC allows some commercial, office and industrial uses.

Water Source & Utilites: Water is available, septic system will be required



Lakeland Mixed-Use Acreage features a single-family home site at the back of the property and commercial use on the highway frontage. The busy US-92 East boasts 32,500 cars per day. This acreage is in a great location with downtown Lakeland or Auburndale just minutes away. It is only 1.5 miles to FL-570 (Polk Parkway) and 7 miles to I-4.

LOCATION & DRIVING DIRECTIONS

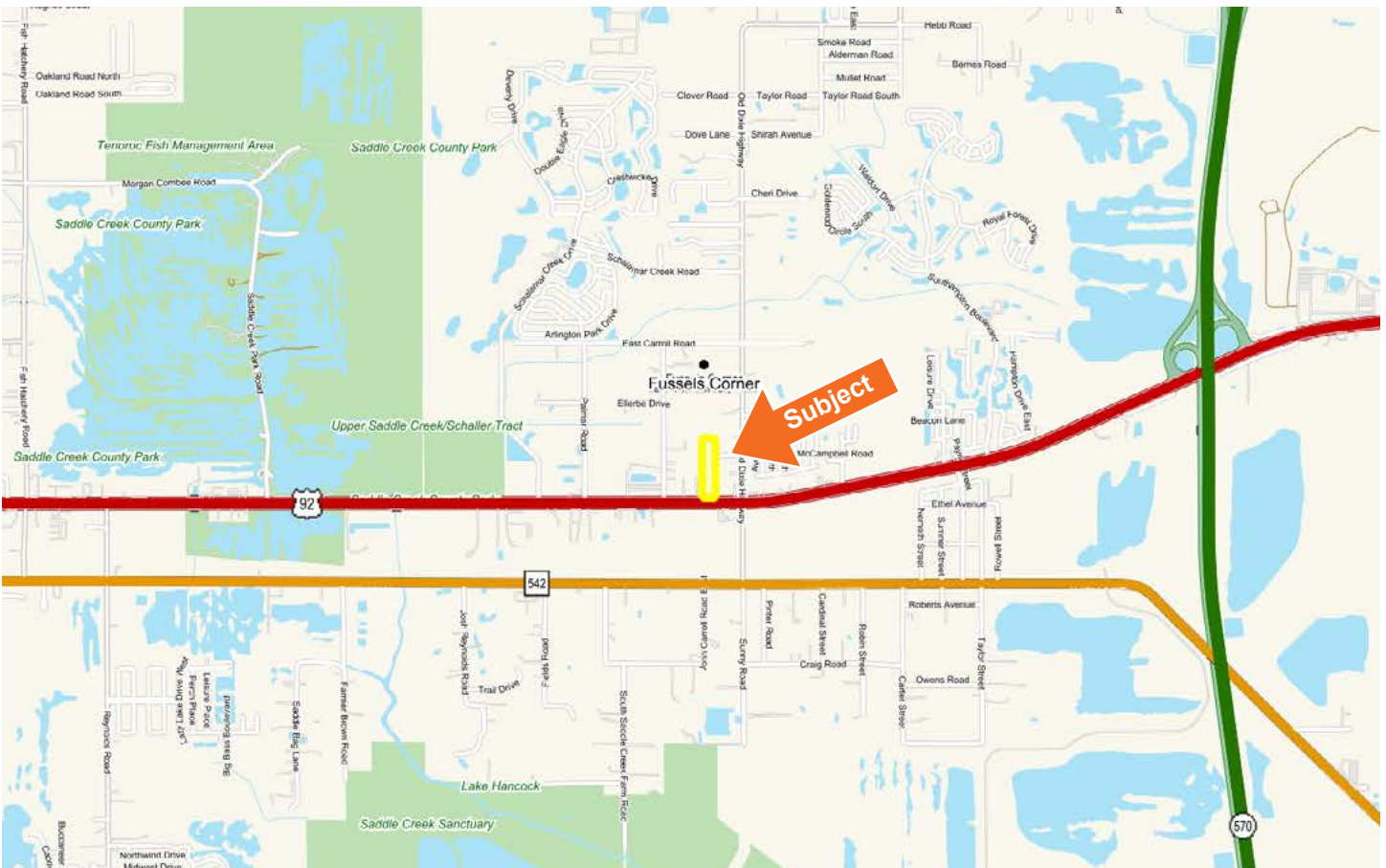
Parcel IDs: 24-28-13-000000-012040 and 24-28-13-000000-012240

GPS Location: 28.0494920, -81.8602205

Driving Directions:

- From FL-570 (Polk Parkway) take the exit onto Hwy 92
- Go west 1.5 miles and the property is on the right

Showing Instructions: Contact the listing advisor, Clay Taylor, ALC, 863.224.0835 and David Hitchcock, ALC, CCIM, 863.557.0082.





1723 Bartow Rd | Lakeland, Florida 33801

5 ± AC • Single-family home and commercial use along the highway frontage
32,500 cars per day on US-92
1.5 miles to FL-570 (Polk Parkway) and 7 miles to I-4

Visit SVNsaunders.com and search for: Lakeland Mixed-Use

Clay Taylor, ALC, 863.224.0835 | clay.taylor@svn.com
David Hitchcock, ALC, CCIM, 863.557.0082 | david.hitchcock@svn.com



HEADQUARTERS
1723 Bartow Rd
Lakeland, Florida 33801
863.648.1528

NORTH FLORIDA
356 NW Lake City Ave
Lake City, Florida 32055
386.438.5896

GEORGIA
125 N Broad Street, Suite 210
Thomasville, Georgia 31792
229.299.8600

©2021 SVN | Saunders Ralston Dantzler Real Estate.
All SVN® Offices Independently Owned and Operated

SVN | Saunders Ralston Dantzler Real Estate is a full-service land and commercial real estate brokerage with over \$3 billion in transactions representing buyers, sellers, investors, institutions, and landowners since 1996. We are recognized nationally as an authority on all types of land, including agriculture, ranch, recreation, residential development, and international properties. Our commercial real estate services include marketing, property management, leasing and tenant representation, valuation, business brokerage, and advisory and counseling services for office, retail, industrial, and multi-family properties. Our firm also features an auction company, forestry division, international partnerships, hunting lease management, and extensive expertise in conservation easements. Located at the center of Florida's I-4 corridor, we provide proven leadership and collaborative expertise backed by the strength of the SVN® global platform. To learn more, visit SVNsaunders.com.

