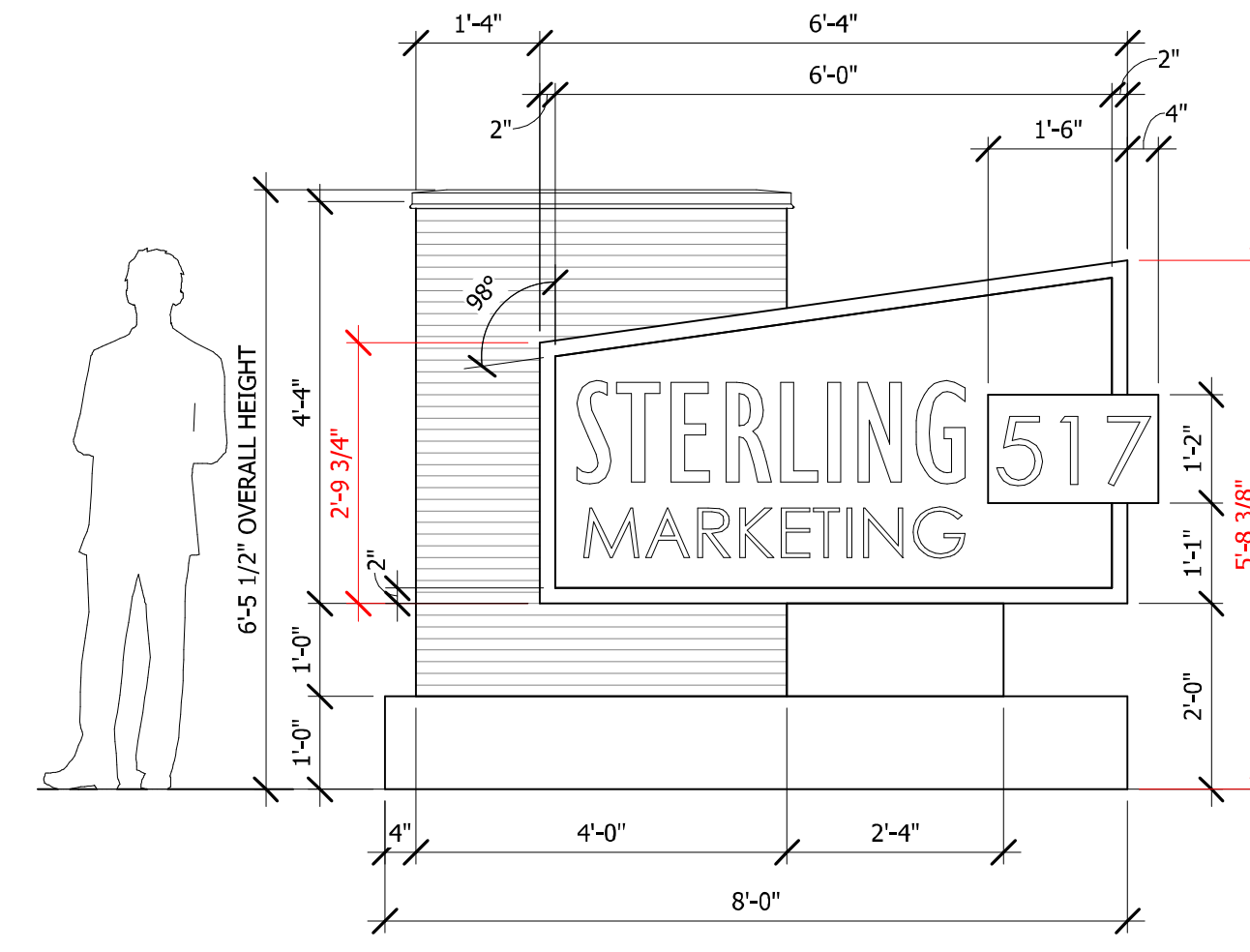


Written dimensions on these drawings shall have precedence over scaled dimensions. Contractor shall verify and be responsible for all dimensions and conditions on the job. Scott + Cormia Architecture and Interiors, LLC must be notified immediately in writing of any variation from the dimensions and conditions shown on these drawings. Field verify all conditions prior to laying out or fabricating associated work. Bring to the architect's attention any deviation from designed conditions and field conditions prior to ordering materials and installing work, and cooperate with architect to modify such conditions at no additional cost to the owner, architect or architect's consultants. Shop details must be submitted to the architect's office and reviewed by the architect prior to ordering materials, fabrication and delivery to the job site. Missions otherwise provided for under the architect's contract shall prevail over any other information. Scott + Cormia Architecture and Interiors, LLC expressly reserves its common law copyright and other property rights in these drawings. No part of these drawings shall be reproduced, stored in a retrieval system, or transmitted in any form or by any means, electronic, mechanical, photocopying, recording, or by any information storage and retrieval system, without the prior written consent of Scott + Cormia Architecture and Interiors, LLC. For such use in an amount equal to the original fee for the original documents, plus legal fees, court costs, collection fees and other costs. 7/23/2018 4:13:18 PM



2 MONUMENT SIGN - PERSPECTIVE
SCALE: NOT TO SCALE



1 MONUMENT SIGN - ELEVATION
SCALE: 1/2" = 1'-0"

GENERAL NOTE:

WALL SIGNAGE AND MONUMENT SIGNAGE ARE CONCEPTUAL AND FOR INFORMATIONAL PURPOSES ONLY

DIMENSIONS: TOTAL SIGN COPY AREA 18.11 S.F.
MAX HEIGHT = 6'-5 1/2"

MATERIALS: STONE, WOOD, METAL

project



OVIEDO OFFICE BUILDING
STERLING MARKETING

OVIEDO, FLORIDA

seal

ADO & SDO
SUBMITTAL

2018 JUL 23

To the best of our knowledge, belief and professional judgement, these plans and specifications are in compliance with the applicable building codes.

submissions

#	DATE	DESCRIPTION
1	2018 JUL 23	ADO SUBMITTAL

drawing info

PROJECT #: 18023
DRAWN BY: KM, KC, PH
CHECKED BY: MC

sheet number

BIRD'S EYE VIEW - SOUTH WEST & MONUMENT SIGN

A002