

JOSH FOWLER

REALTOR®

928-710-8072

Josh@jfowlercommercial.com



JACK FOWLER

Associate Broker

928-899-1378

Jack@jfowlercommercial.com

**3200 N Victor Road
Prescott Valley, AZ 86314**



ZONING R2-3

MLS# 1036145

**Completely remodeled from the studs out. New
paving. Nearly everything is New!**

4 Plex



\$699,000.00



ADDRESS: 3200 N Victor Road
Prescott Valley , AZ

PARCEL NUMBER: 103-22-105

ZONING: R 2-3

For more information on zoning go to:

<http://www.pvaz.net/DocumentCenter/View/375>

LOT SIZE: .27

BUILDING SIZE: 2496 (Two buildings)

COMMERCIAL TYPE: Multi-Tenant

BUILDING LOCATION; Freestanding building/paved parking

CONSTRUCTION: Wood frame

PARKING: 8 parking spaces

YEAR BUILT: 1970 remodeled in 2019

UTILITIES INSTALLED: Electricity

220

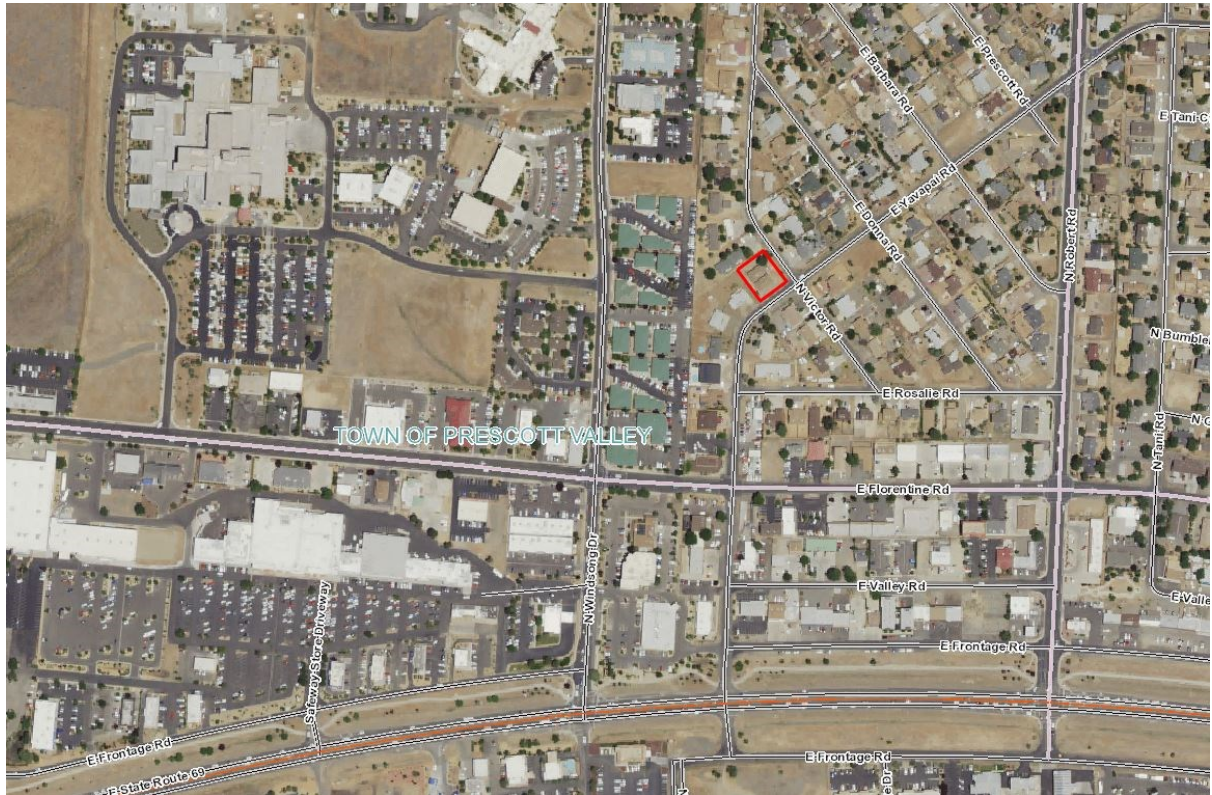
Telephone

City Sewer

City Water

ADDITIONAL INFORMATION: Property rebuilt by current owners.
Permitted Non-comforming as there are 4 units zoned for 3 units.

PROPERTY LOCATION & AREA INFORMATION



Prescott Valley is a town with a current population (2019) of about 46,515 residents located in Yavapai County, Arizona, United States, and a suburb of Prescott (although Prescott Valley is larger). Prescott Valley was the seventh fastest-growing place among all cities and towns in Arizona between 1990 and 2000.. Prescott Valley (locally, **PV**) is located in central Arizona approximately 85 miles (137 km) north of Phoenix at 5,100 feet elevation. PV has good access to Arizona State Route 89, SR-89A and SR-69, connecting to Interstates 17 and 40. Air service is available at Ernest A. Love Field, about 8 miles northwest.

The information contained herein has been obtained from sources believed reliable While we do not doubt its accuracy we have not verified it and make no guarantee, warranty or representation about it. It is your responsibility to independently confirm its accuracy and completeness. Any projections, opinions, assumptions, or estimates used are for example only and do not represent the current or future performance of the property. The value of this transaction to you depends on tax and other factors which should be evaluated by your tax, financial, and legal advisors. You and your advisors should conduct a careful, independent investigation of the property to determine to your satisfaction the suitability of the property for your needs.