

LEGEND

- SPT BORING LOCATION
- GSE GROUND SURFACE ELEVATION (FT. NGVD)
- $+76.4$ ENCOUNTERED GROUNDWATER ELEVATION (FT. NGVD)
- N STANDARD PENETRATION RESISTANCE, BLOWS PER FOOT
- (SP) UNIFIED SOIL CLASSIFICATION SYMBOL
- BT BORING TERMINATED AT SPECIFIED DEPTH (FT.) INDICATED
- $-200=$ PERCENT PASSING NO. 200 U.S. STANDARD SIEVE (FM I-T 088)
- \perp APPROXIMATE BOTTOM OF BOX CULVERT

SOILS LEGEND

- SAND
- SAND AND SILT

GENERAL NOTES

STANDARD PENETRATION TEST BORINGS WERE PERFORMED IN ACCORDANCE WITH ASTM D-1586. STANDARD PENETRATION RESISTANCES ARE SHOWN ON THE BORINGS AT THE TEST DEPTHS IN BLOWS PER FOOT UNLESS OTHERWISE NOTED.

SUBSURFACE CONDITIONS SHOWN ON THE BORINGS REPRESENT THE CONDITIONS ENCOUNTERED AT THE BORING LOCATIONS. ACTUAL CONDITIONS BETWEEN BORINGS MAY VARY FROM THOSE SHOWN. UNIFIED SOIL CLASSIFICATIONS SHOWN ON THE BORINGS ARE BASED ON VISUAL EXAMINATION AND THE LABORATORY TESTING SHOWN.

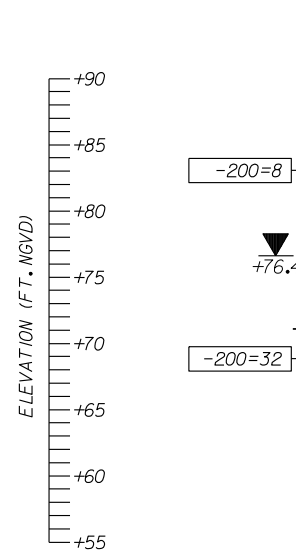
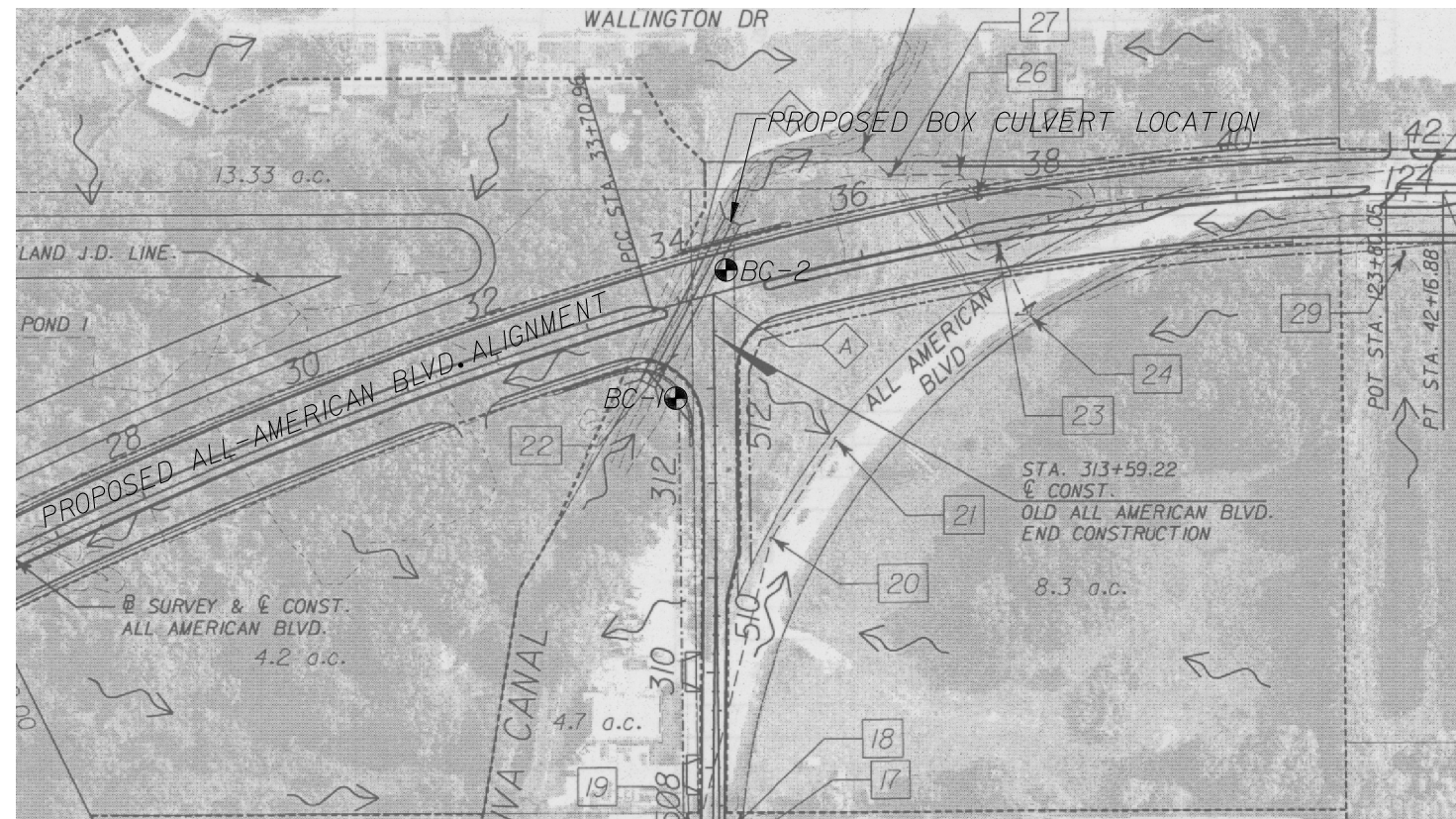
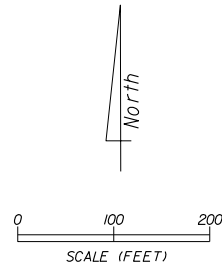
THE BOX CULVERT BORING LOCATIONS WERE SURVEYED FOR HORIZONTAL AND VERTICAL CONTROL BY METRIC ENGINEERING.

BASED ON A REVIEW OF THE U.S. GEOLOGICAL SURVEY MAP ENTITLED "POTENTIOMETRIC SURFACE OF THE UPPER FLORIDAN AQUIFER IN THE SEPTEMBER 2004" FOR THE PROJECT AREA, THE MAXIMUM ELEVATION OF THE ARTESIAN HEAD IS ESTIMATED TO BE APPROXIMATELY $+52$ TO $+58$ FT. NGVD. THE CONTRACTOR SHALL BE PREPARED TO HANDLE ARTESIAN HEAD LEVELS UP TO $+58$ FT. NGVD.

- SPLIT SPOON SAMPLER: INSIDE DIAMETER: 1.375 IN. OUTSIDE DIAMETER: 2.0 IN. AVERAGE HAMMER DROP: 30 IN. HAMMER WEIGHT: 140 LBS. HAMMER TYPE: SAFETY (MANUAL)
- ENVIRONMENTAL CLASSIFICATION: SUPERSTRUCTURE: SLIGHTLY AGGRESSIVE
- SUBSTRUCTURE: STEEL: MODERATELY AGGRESSIVE CONCRETE: MODERATELY AGGRESSIVE

CORRELATION OF STANDARD PENETRATION RESISTANCE WITH RELATIVE DENSITY AND CONSISTENCY OF SOIL

GRANULAR SOILS	N VALUE (blows per foot)	RELATIVE DENSITY
SANDS	0-4	VERY LOOSE
	4-10	LOOSE
	10-30	MEDIUM DENSE
	30-50	DENSE
	OVER 50	VERY DENSE
NON-GRANULAR SOILS	N VALUE (blows per foot)	CONSISTENCY
SILTS, CLAYS, MUCK, PEAT	0-2	VERY SOFT
	2-4	SOFT
	4-8	FIRM
	8-15	STIFF
	15-30	VERY STIFF
	OVER 30	HARD



BC-1
GSE: $+88.0$
STA. 33+65, 94.4' RIGHT
DATE DRILLED: 12-22-05

BROWN TO LIGHT BROWN FINE SAND WITH SILT (SP-SM)

GRAY SILTY FINE SAND, SOME SHELL (SM)

BT AT 30'
NO CASING

BC-2
GSE: $+87.6$
STA. 34+56, 23' LEFT
DATE DRILLED: 12-22-05

BROWN FINE SAND WITH SILT, ABUNDANT ROOTS (SP-SM)

BROWN FINE SAND WITH SILT, (SP-SM)

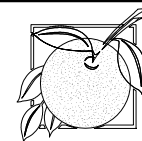
GRAY FINE SAND WITH SILT, TRACE CEMENTED SAND, ABUNDANT SHELL (SP-SM)

BT AT 30'
NO CASING

REVISIONS

DATE	BY	DESCRIPTION	DATE	BY	DESCRIPTION

CHRISTOPHER P. MEYER, P.E.
P.E. LICENSE NO. 49328
GEO TECHNICAL AND ENVIRONMENTAL CONSULTANTS, INC.
919 LAKE BALDWIN LANE
ORLANDO, FL 32814
PH (407) 898-1818 FAX (407) 898-1837
CERTIFICATE OF AUTHORIZATION NO. 00005882

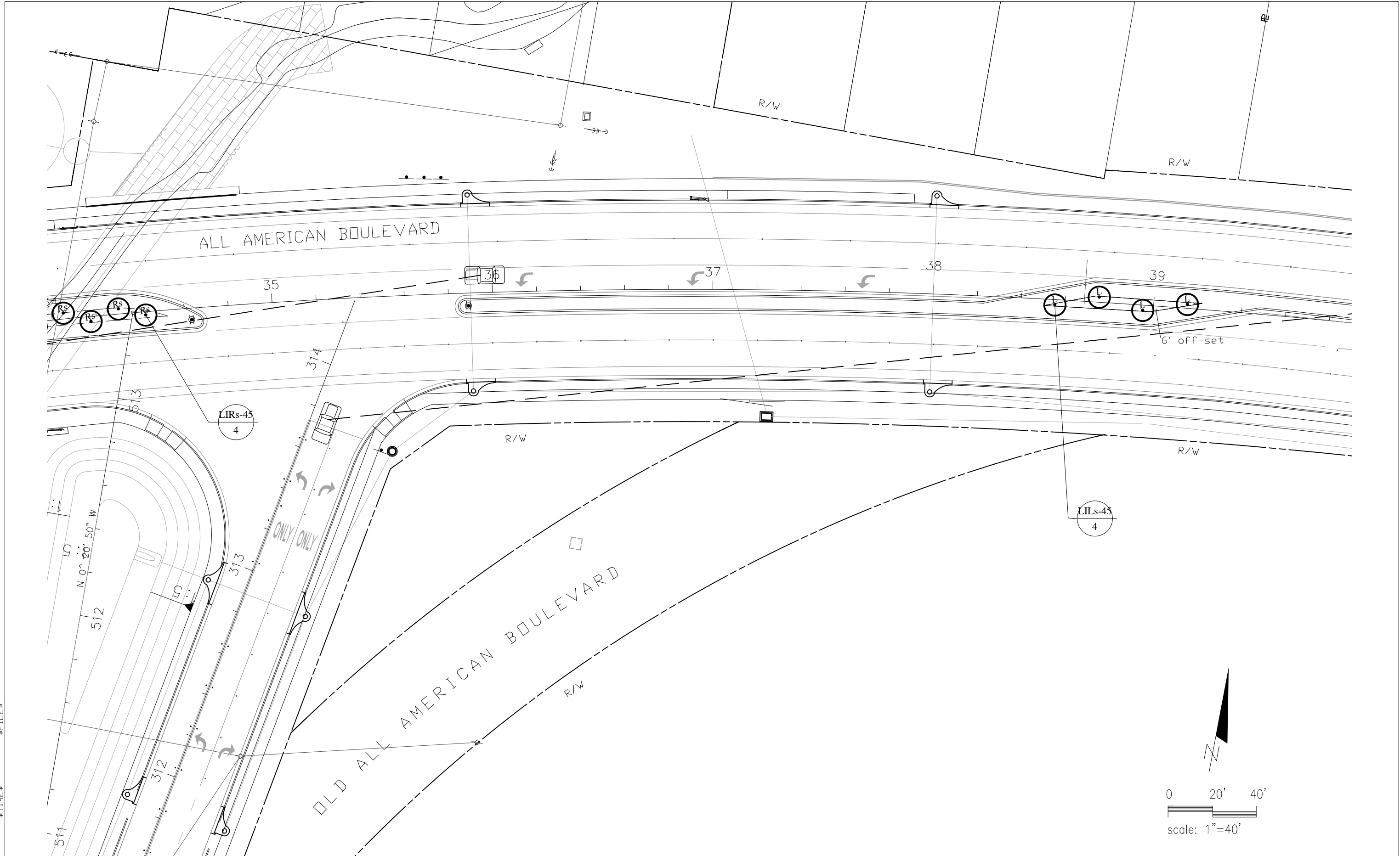


ORANGE COUNTY
GOVERNMENT
FLORIDA

**BOX CULVERT
BORING RESULTS
ALL-AMERICAN BOULEVARD**

SHEET NO.

B-9



\$DATE:\$ \$FILE:\$
 \$TIME:\$

REVISIONS											
DATE	BY	DESCRIPTION	DATE	BY	DESCRIPTION	DATE	BY	DESCRIPTION	DATE	BY	DESCRIPTION

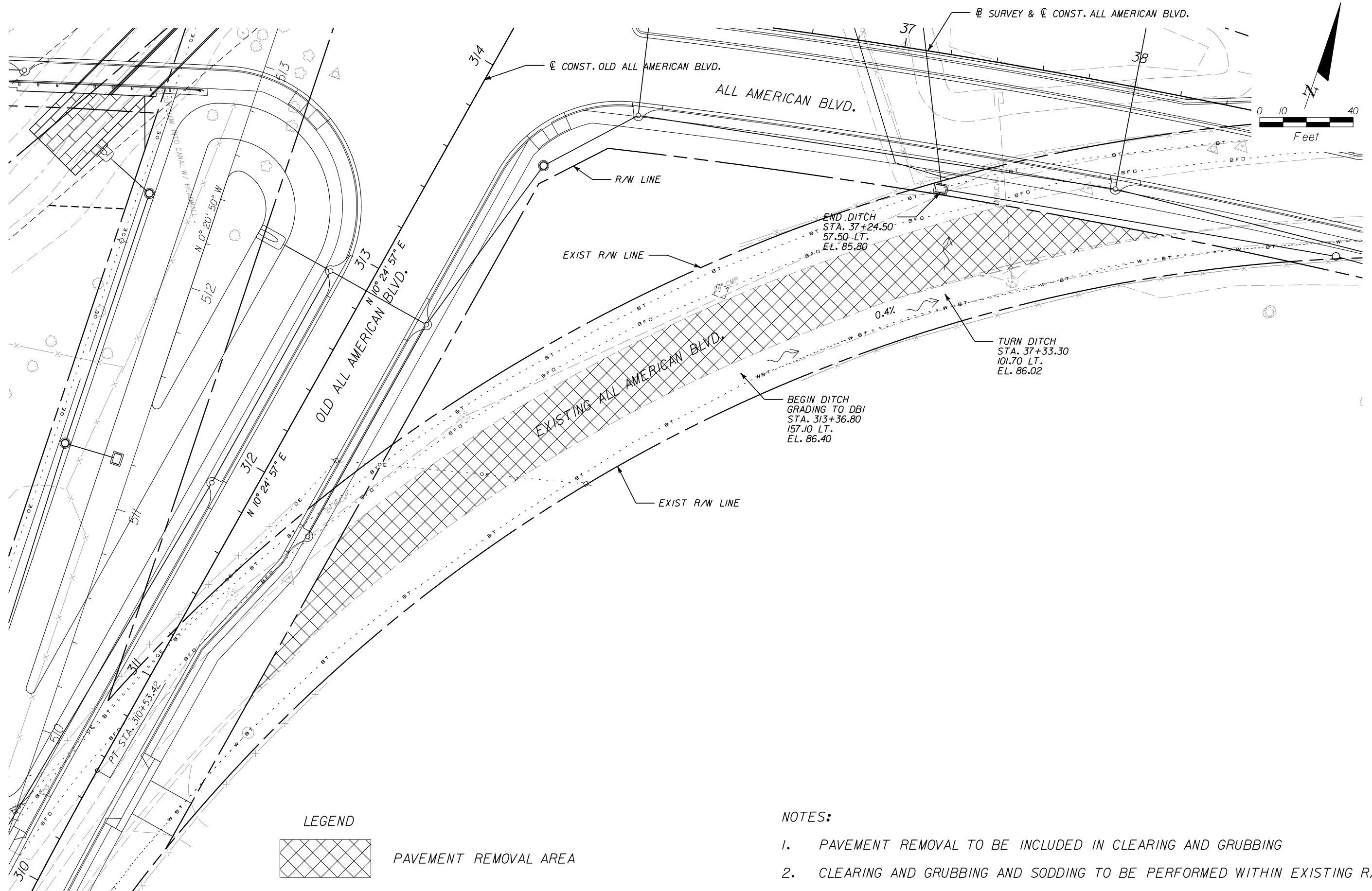
DESIGNED BY	JCR	NAME	JCR	DATE	11/10	DRAWN BY	JCR	NAME	JCR	DATE	11/10
CHECKED BY	JCR	CHECKED BY	JCR	DATE	11/10	CHECKED BY	JCR	DATE	JCR	11/10	
SUPERVISED BY: JOAN RANDOLPH, R.L.A.											


 P.O. Box 941994
 Maitland, Fla. 32794-1994
 Ph (407) 644-5297 * Fax (407) 644-3274
 LANDSCAPE ARCHITECT OF RECORD: JOAN RANDOLPH, L.A.#000676

ORANGE COUNTY, FLORIDA
ALL AMERICAN BOULEVARD
LANDSCAPE PLAN

SHEET LD-8

x:\all-american_bldg\Roadway\PLANRD12.DGN



NOTES:

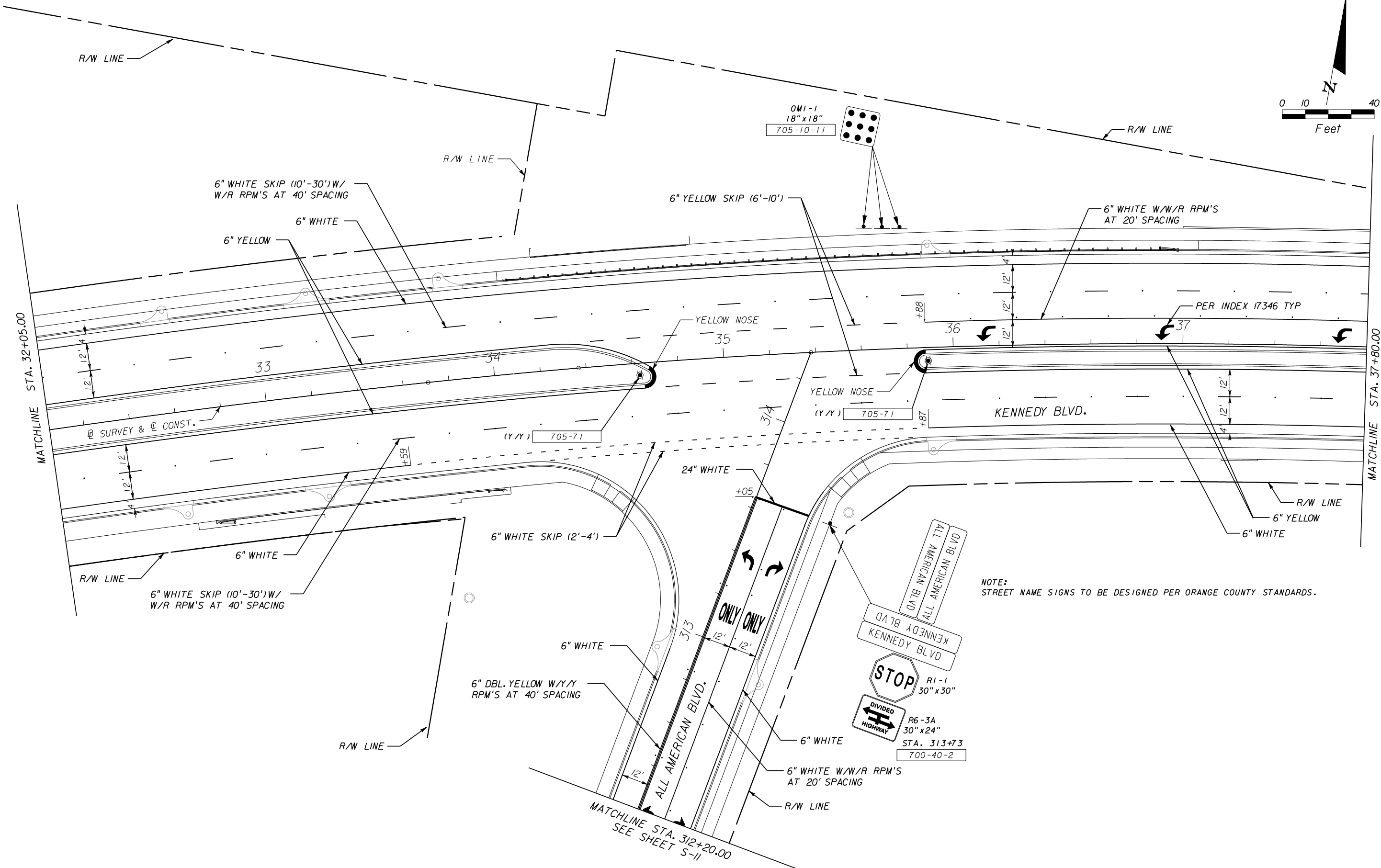
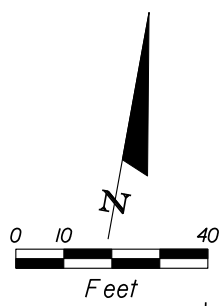
1. PAVEMENT REMOVAL TO BE INCLUDED IN CLEARING AND GRUBBING
2. CLEARING AND GRUBBING AND SODDING TO BE PERFORMED WITHIN EXISTING R/W

REVISIONS					
DATE	BY	DESCRIPTION	DATE	BY	DESCRIPTION

DESIGNED BY	CWE	DATE	11/10	DRAWN BY	CWE	DATE	11/10
CHECKED BY	BPR	DATE	11/10	CHECKED BY	BPR	DATE	11/10
SUPERVISED BY: CHAD A. LUEDTKE, P.E.							

ENGINEER OF RECORD: CHAD LUEDTKE, PE P.E. NO. 51422
 HDR Engineering, Inc.
 315 E. Robinson Street, Suite 400
 Orlando, FL 32801-1948
 (407) 420-4200
 www.hdrinc.com

ORANGE COUNTY, FLORIDA
ALL AMERICAN BOULEVARD
DEMOLITION PLAN



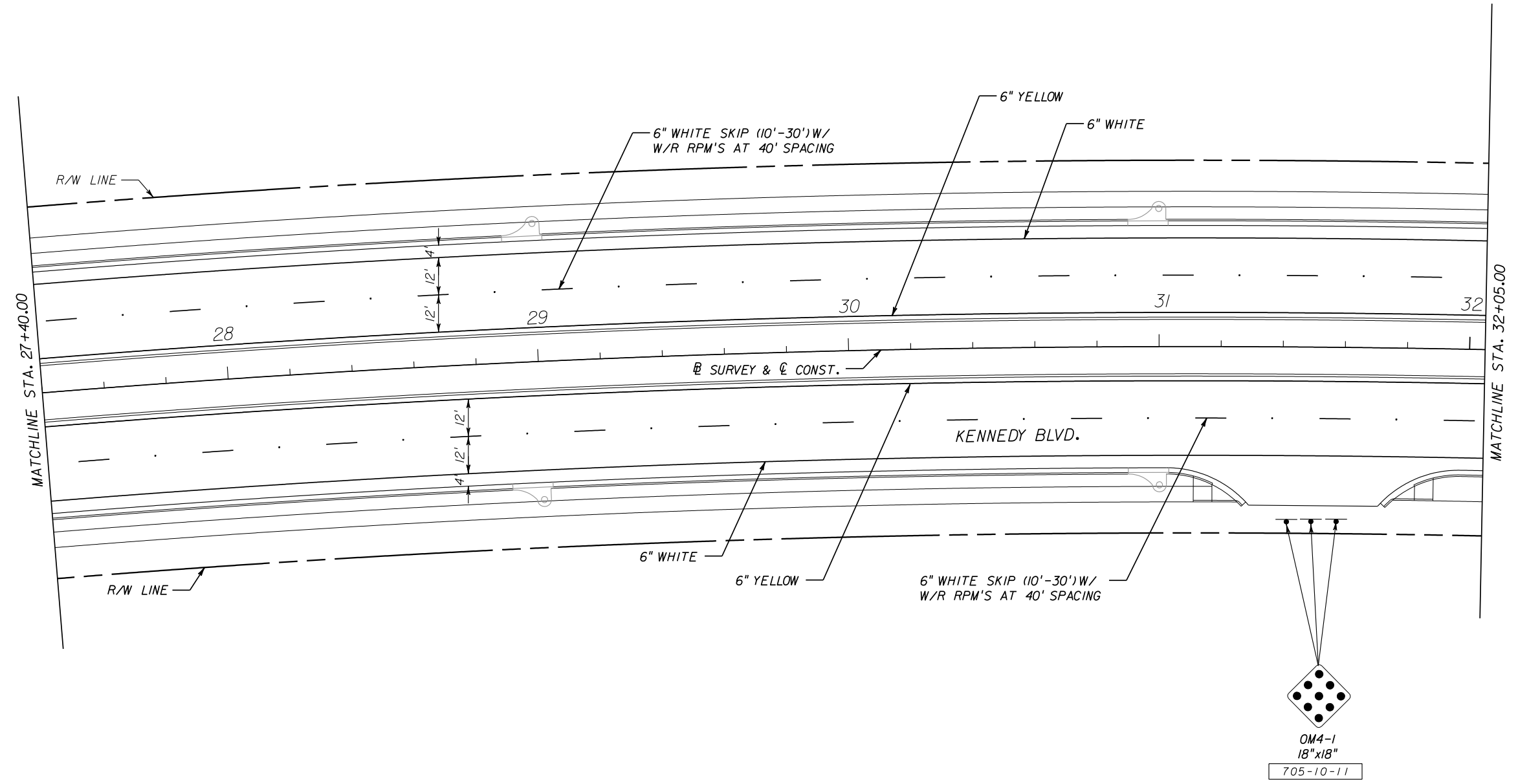
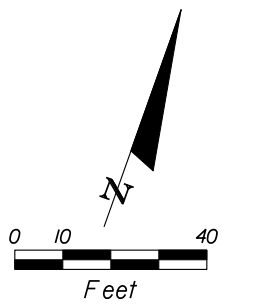
NOTE:
STREET NAME SIGNS TO BE DESIGNED PER ORANGE COUNTY STANDARDS.

REVISIONS					
DATE	BY	DESCRIPTION	DATE	BY	DESCRIPTION

DESIGNED BY	T.D.	DATE	11/10	DRAWN BY	T.D.	DATE	11/10
CHECKED BY	R.A.A.	DATE	11/10	CHECKED BY	R.A.A.	DATE	11/10
SUPERVISED BY: RICHARD ATTA-ARMAH, P.E.							

ENGINEER OF RECORD: RICHARD ATTA-ARMAH, P.E. NO. 57961
 HDR Engineering, Inc.
 315 E. Robinson Street, Suite 400
 Orlando, FL 32801-1948
 (407) 420-4200
 www.hdrinc.com

ORANGE COUNTY, FLORIDA
ALL AMERICAN BOULEVARD
 SIGNING AND PAVEMENT MARKING PLAN



x:\all-american_bvd\signing\plansp06.dgn

11/10/2010

REVISIONS											
DATE	BY	DESCRIPTION	DATE	BY	DESCRIPTION	DATE	BY	DESCRIPTION	DATE	BY	DESCRIPTION

DESIGNED BY	T.D.	DATE	11/10	DRAWN BY	T.D.	DATE	11/10
CHECKED BY	R.A.A.	DATE	11/10	CHECKED BY	R.A.A.	DATE	11/10
SUPERVISED BY: RICHARD ATTA-ARMAH, P.E.							

ENGINEER OF RECORD: RICHARD ATTA-ARMAH, P.E. NO. 57961
HDR
 Employee-owned
 HDR Engineering, Inc.
 315 E. Robinson Street, Suite 400
 Orlando, FL 32801-1949
 (407) 420-4200
 www.hdrinc.com

ORANGE COUNTY, FLORIDA
ALL AMERICAN BOULEVARD
 SIGNING AND PAVEMENT MARKING PLAN