

11715 E MAIN ST.  
DOWNTOWN HUNTLEY ON THE SQUARE  
HUNTLEY, IL 60142

FOR SALE

MLS # Retail 10991424 Office 10991437

February 8, 2021



RETAIL / OFFICE - 2,923 SF

\$424,900 (\$145.36 psf)

DESCRIPTION

**Office or Retail**  
Located On The Square

2,923 SF building in prime location in downtown Huntley On The Square with public parking in front and behind building. Current floor plan is for office use with 8 offices, large conference room w/ kitchenette, 3 baths and storage room. Ideal for professional service (Medical, Insurance, Financial Planner, Attorney). Can easily be opened up for a large open retail space! Perfect for Boutique, Hair Salon, Food Service or Jewelry. Full basement for additional storage. New roof in 2014, electric service updated in 1997 and new A/C in 2012.

SPECIFICATIONS

Description	Office or Retail Bldg.
Building Size	2,923 SF
Land Size	.66 AC
Year Built	1893 - Renovated 1997
HVAC System	Boiler/ Central Air
Electrical	200 AMP
Sprinklers	No
Washrooms	3 (1 w/ shower)
Ceiling Height	8 FT
Parking	Street / Lot
Sewer/Water	City
Zoning	B2
RE Taxes	\$7,927 (2019)
PIN#	18-33-127-005

DEMOGRAPHICS

	1 Mile	3 Miles	5 Miles
Population	4,989	40,229	79,204
Avg Household Income	\$84,765	\$90,110	\$99,329

No warranty or representation is made as to the accuracy of the foregoing information. Terms of sale or lease and availability are subject to change or withdrawal without notice. This document is for information purposes only. No offer of sub-agency is being made.

**PREMIER**  
COMMERCIAL REALTY

- Industrial
- Commercial
- Office
- Land
- Business

**CLICK HERE**  
to view our website

9225 S. IL Route 31  
Lake in the Hills, IL 60156  
www.PremierCommercialRealty.com  
Office: 847-854-2300 | Fax: 847-854-2380

**HEATHER SCHWEITZER**

Vice President/Managing Broker

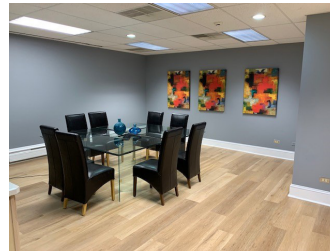
Office: 847-854-2300 Ext 15

Cell: 815-236-9816

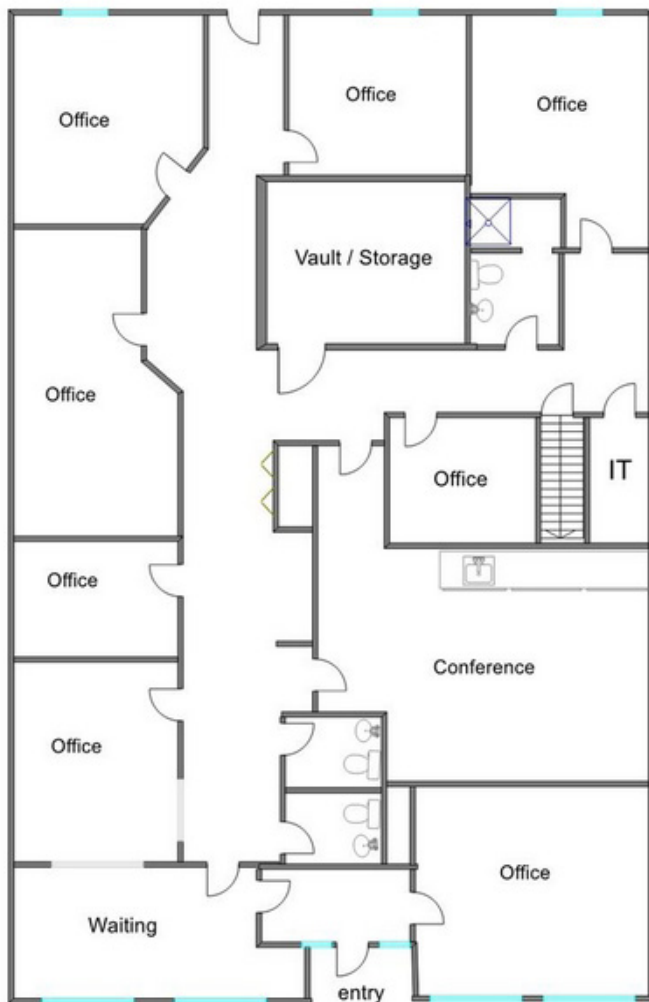
[HeatherS@PremierCommercialRealty.com](mailto:HeatherS@PremierCommercialRealty.com)

11715 E MAIN ST.  
DOWNTOWN HUNTLEY ON THE SQUARE  
HUNTLEY, IL 60142

FOR SALE



PUBLIC PARKING LOT



Measurements Approximate



STREET PARKING

**PREMIER**  
COMMERCIAL REALTY

- Industrial
- Commercial
- Office
- Land
- Business

**CLICK HERE**  
to view our website

9225 S. IL Route 31  
Lake in the Hills, IL 60156  
www.PremierCommercialRealty.com  
Office: 847-854-2300 | Fax: 847-854-2380

