

SURVEYED FOR

MITCHAM HOLDINGS, LLC

IN LAND LOTS 94 & 95, 24TH DISTRICT,

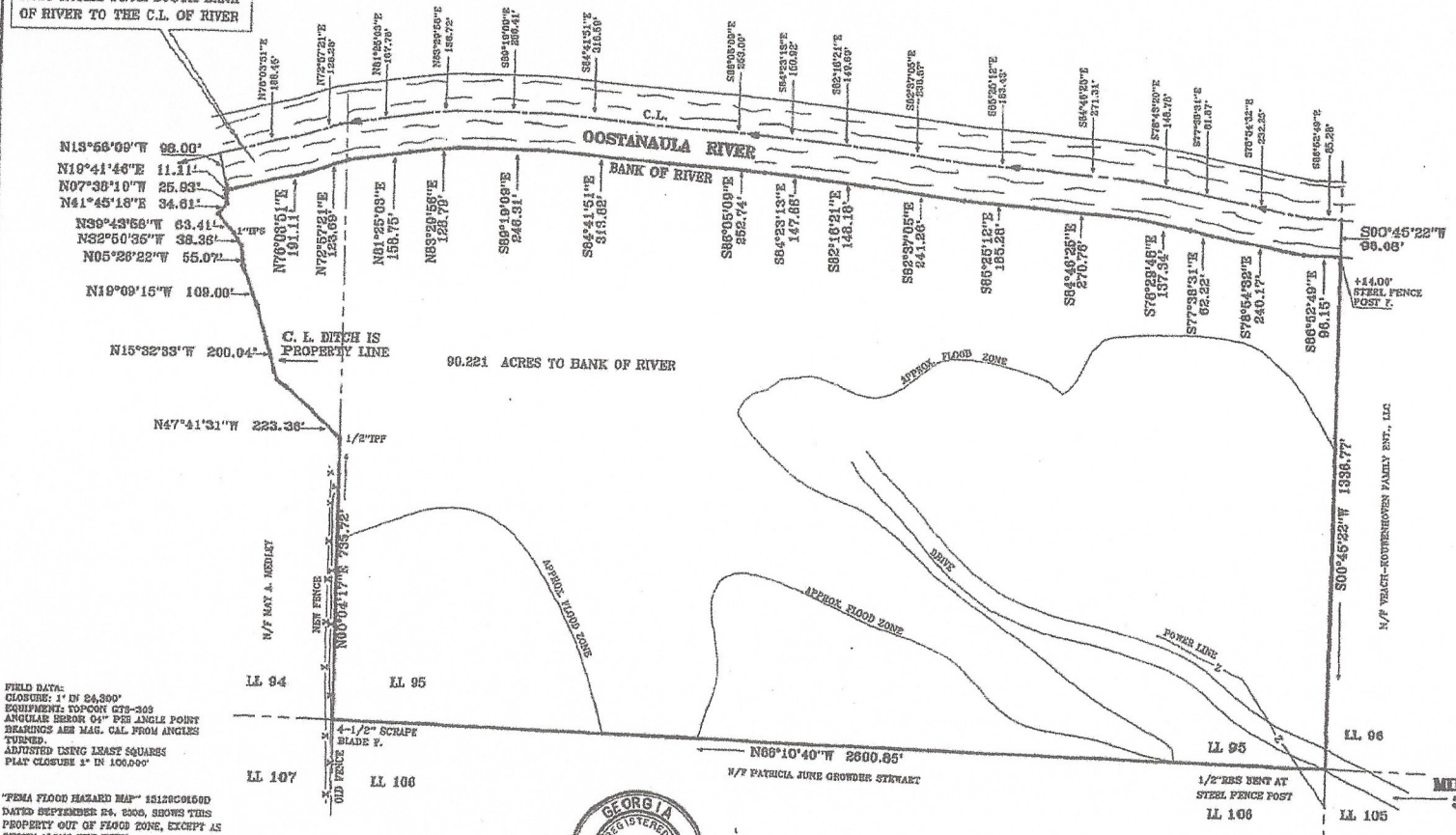
3RD. SECTION, GORDON COUNTY, GEORGIA

DATE OF PLAT 2-25-2011 SCALE 1" = 200'

DATE OF FIELD WORK 8-27-2010, 1-03-2011, 1-04-2011

1-21-2011, 1-27-2011, 2-17-2011, 2-24-2011

6.651 ACRES FROM SOUTH BANK OF RIVER TO THE C.L. OF RIVER



FIELD DATA:
 CLOSURE: 1" IN 24,300'
 EQUIPMENT: TOPCON CRT-303
 ANGULAR ERROR 04" PER ANGLE POINT
 BEARINGS ARE MAG. CAL FROM ANGLES
 TURNED.
 ADJUSTED USING LEAST SQUARES
 PLAT CLOSURE 1" IN 106,000'

"FEMA FLOOD HAZARD MAP" 15128C0169D
 DATED SEPTEMBER 24, 2006, SHOWS THIS
 PROPERTY OUT OF FLOOD ZONE, EXCEPT AS
 SHOWN ALONG THE RIVER.

NOTE: THIS PLAT IS MADE FOR THE SOLE USE AND
 BENEFIT OF THE PERSON OR PERSONS NAMED HEREON.
 THIS FIRM ASSUMES NO LIABILITY TO PERSONS NOT
 NAMED HEREON AND ANY USE BY UNNAMED PARTIES
 WILL BE DONE AT THEIR OWN RISK.



KNIGHT & KNIGHT LAND SURVEYORS, LLC
 116 CENTER ROAD
 CANTERSVILLE, GEORGIA 30121
 TELEPHONE (770) 382-7275
 or (770) 382-5525

Magnetic North