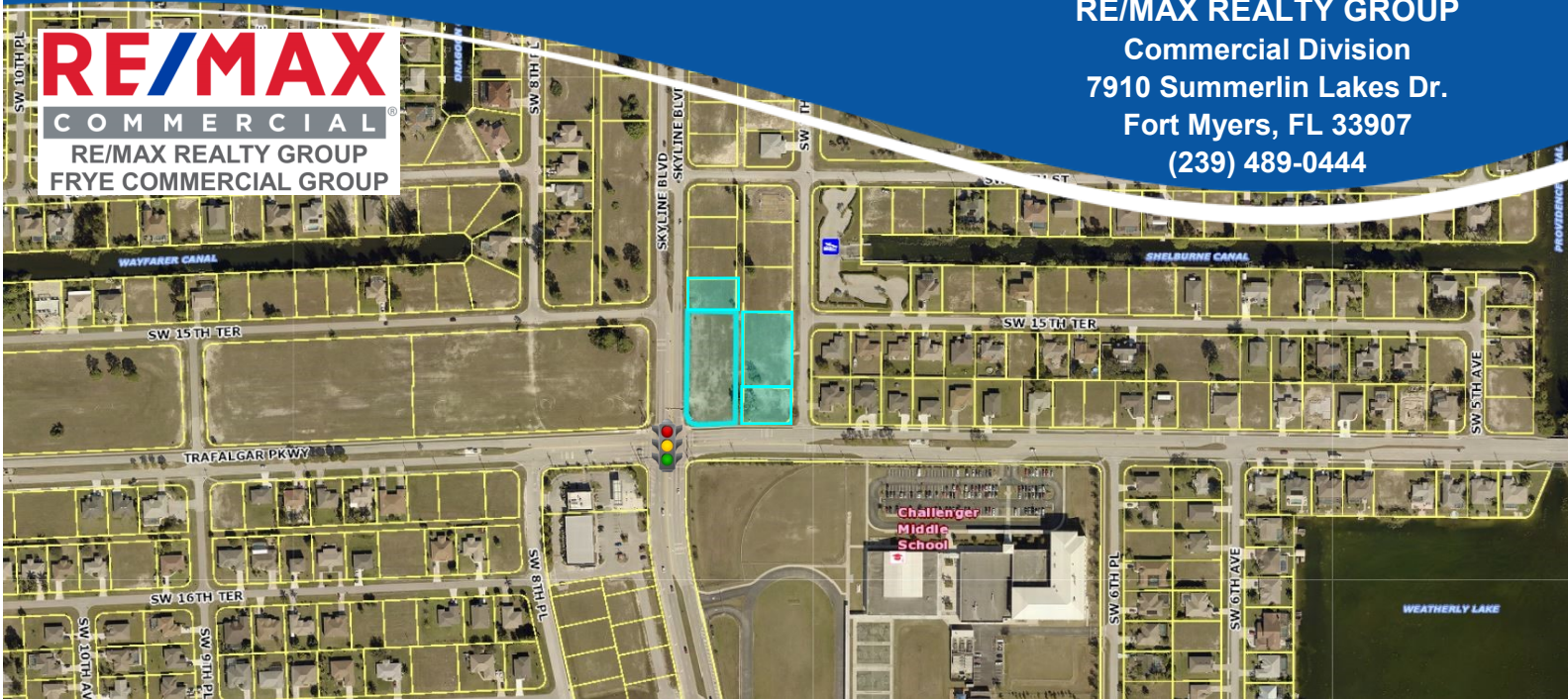


RE/MAX
COMMERCIAL
 RE/MAX REALTY GROUP
 FRYE COMMERCIAL GROUP

RE/MAX REALTY GROUP
 Commercial Division
 7910 Summerlin Lakes Dr.
 Fort Myers, FL 33907
 (239) 489-0444



FOR SALE - SIGNALIZED Corner
1525 Skyline Blvd., Cape Coral, FL 33991

Size: 1.9± Acres

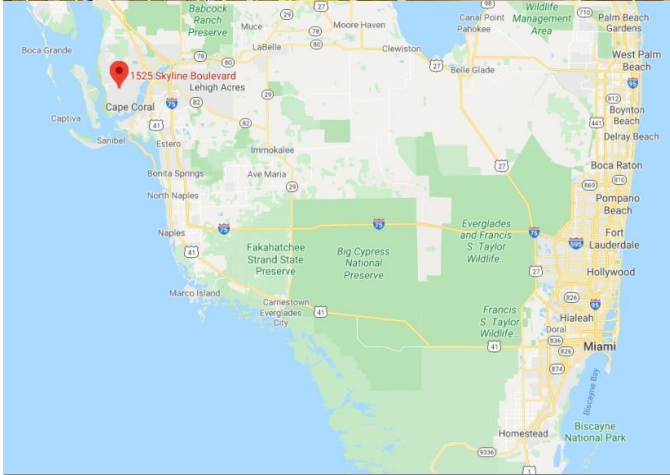
Price: \$375,000 (\$4.53/PSF)

Zoning: Commercial - Wide variety of uses

Strap #: 22-44-23-C3-01912.0240 | 0220

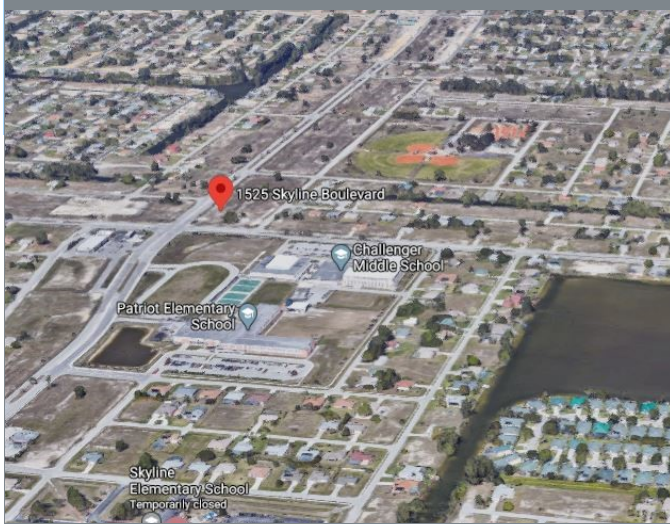
23-44-23-C4-01912.0010 | 003A

Traffic Count: 21,000 (2019)



PROPERTY DESCRIPTION:

- Midway between Pine Island Rd. and Veterans Memorial Pkwy.
- **SIGNALIZED** Corner lot
- Utilities to the site
- Nearby many restaurants, schools, parks/softball fields & retail - Publix, Dunkin Donuts, 7-11, BMX Park



MICHAEL J. FRYE, CCIM|CEO
 Hall of Fame, Lifetime Achievement

Direct: (239) 281-0441
mfrye@ccim.net



HAL ARKIN
 Hall of Fame

Direct: (239) 910-5363
harkin@remax.net



FOR SALE
1525 Skyline Blvd.
Cape Coral, FL 33991



Michael J. Frye, CCIM
Direct: (239) 281-0441

Hal Arkin
Direct: (239) 910-5363



7910 Summerlin Lakes Dr., Fort Myers, FL 33907 | (239) 489-0444
www.ftmyerscommercial.com | www.michaeljrye.com