

929 Hart Rd.

929 HART RD. , ROUND LAKE, IL 60073

FOR SALE

\$850,000

Special Purpose Property



PROPERTY FEATURES

- Sanctuary
- Fellowship Hall
- Classrooms
- Offices
- Monument Sign
- Lighted Parking Lot
- 80+ Parking Spaces
- 3.75 Acres



Wayne Kurchina, CCIM, CIPS

MANAGING BROKER/OWNER

815.344.8900

wayne.kurchina@sperrycga.com

IL #471.000538 | WI #56313-090

Each office independently owned and operated.

We obtained the information above from sources we believe to be reliable. However, we have not verified its accuracy and make no guarantee, warranty or representation about it. It is submitted subject to the possibility of errors, omissions, change of price, rental or other conditions, prior sale, lease or financing, or withdrawal without notice. We include projections, opinions, assumptions or estimates for example only, and they may not represent current or future performance of the property. You and your tax and legal advisors should conduct your own investigation of the property and transaction.

www.SperryCGA.com

929 Hart Rd.

929 HART RD. , ROUND LAKE, IL 60073

FOR SALE

Special Purpose Property



Wayne Kurchina, CCIM, CIPS
MANAGING BROKER/OWNER
815.344.8900
wayne.kurchina@sperrycga.com
IL #471.000538 | WI #56313-090

Each office independently owned and operated.

We obtained the information above from sources we believe to be reliable. However, we have not verified its accuracy and make no guarantee, warranty or representation about it. It is submitted subject to the possibility of errors, omissions, change of price, rental or other conditions, prior sale, lease or financing, or withdrawal without notice. We include projections, opinions, assumptions or estimates for example only, and they may not represent current or future performance of the property. You and your tax and legal advisors should conduct your own investigation of the property and transaction.

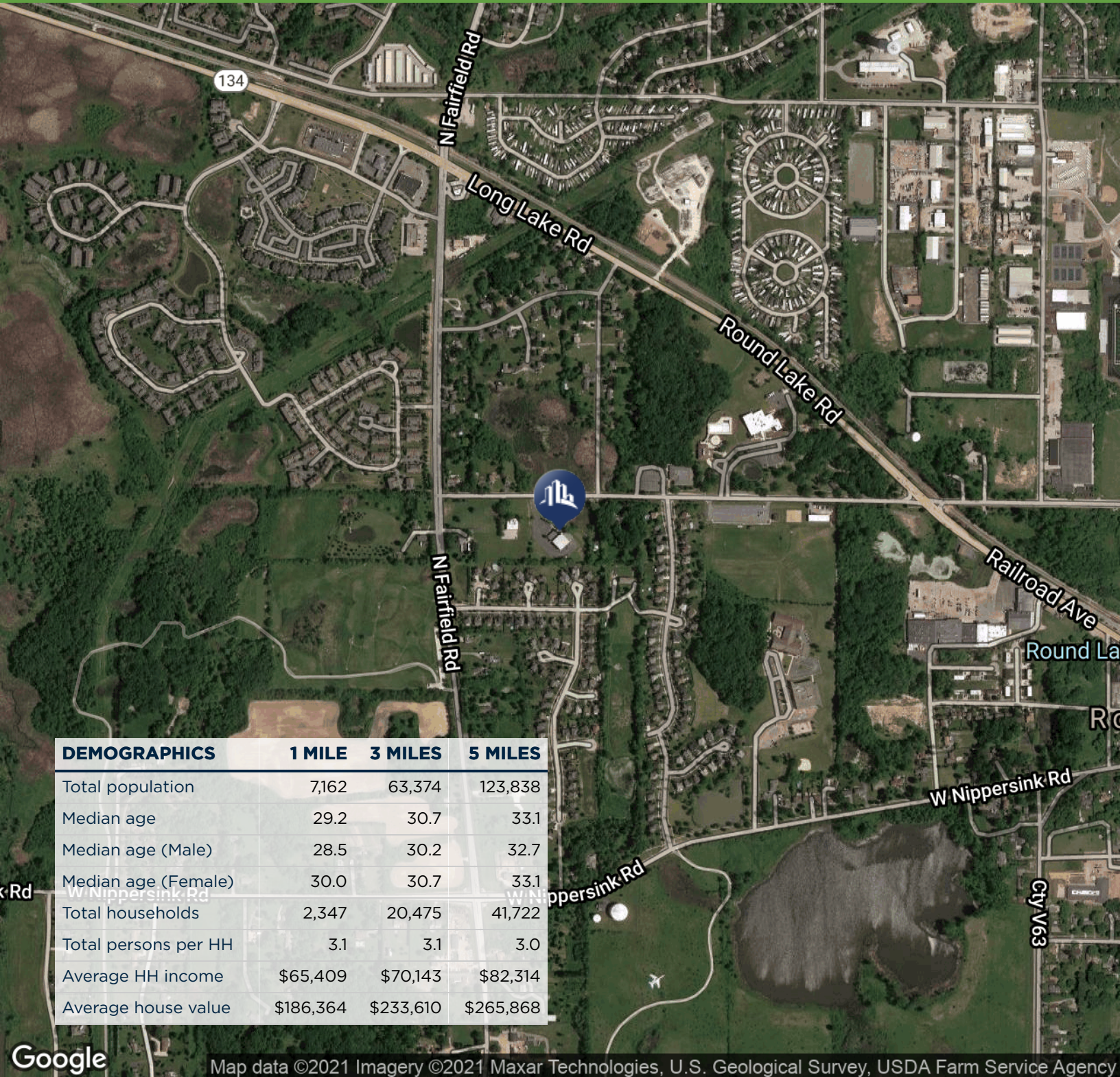
www.SperryCGA.com

929 Hart Rd.

929 HART RD. , ROUND LAKE, IL 60073

FOR SALE

Special Purpose Property



Google

Map data ©2021 Imagery ©2021 Maxar Technologies, U.S. Geological Survey, USDA Farm Service Agency



Wayne Kurchina, CCIM, CIPS
MANAGING BROKER/OWNER
815.344.8900
wayne.kurchina@sperrycga.com
IL #471.000538 | WI #56313-090

Each office independently owned and operated.
We obtained the information above from sources we believe to be reliable. However, we have not verified its accuracy and make no guarantee, warranty or representation about it. It is submitted subject to the possibility of errors, omissions, change of price, rental or other conditions, prior sale, lease or financing, or withdrawal without notice. We include projections, opinions, assumptions or estimates for example only, and they may not represent current or future performance of the property. You and your tax and legal advisors should conduct your own investigation of the property and transaction.

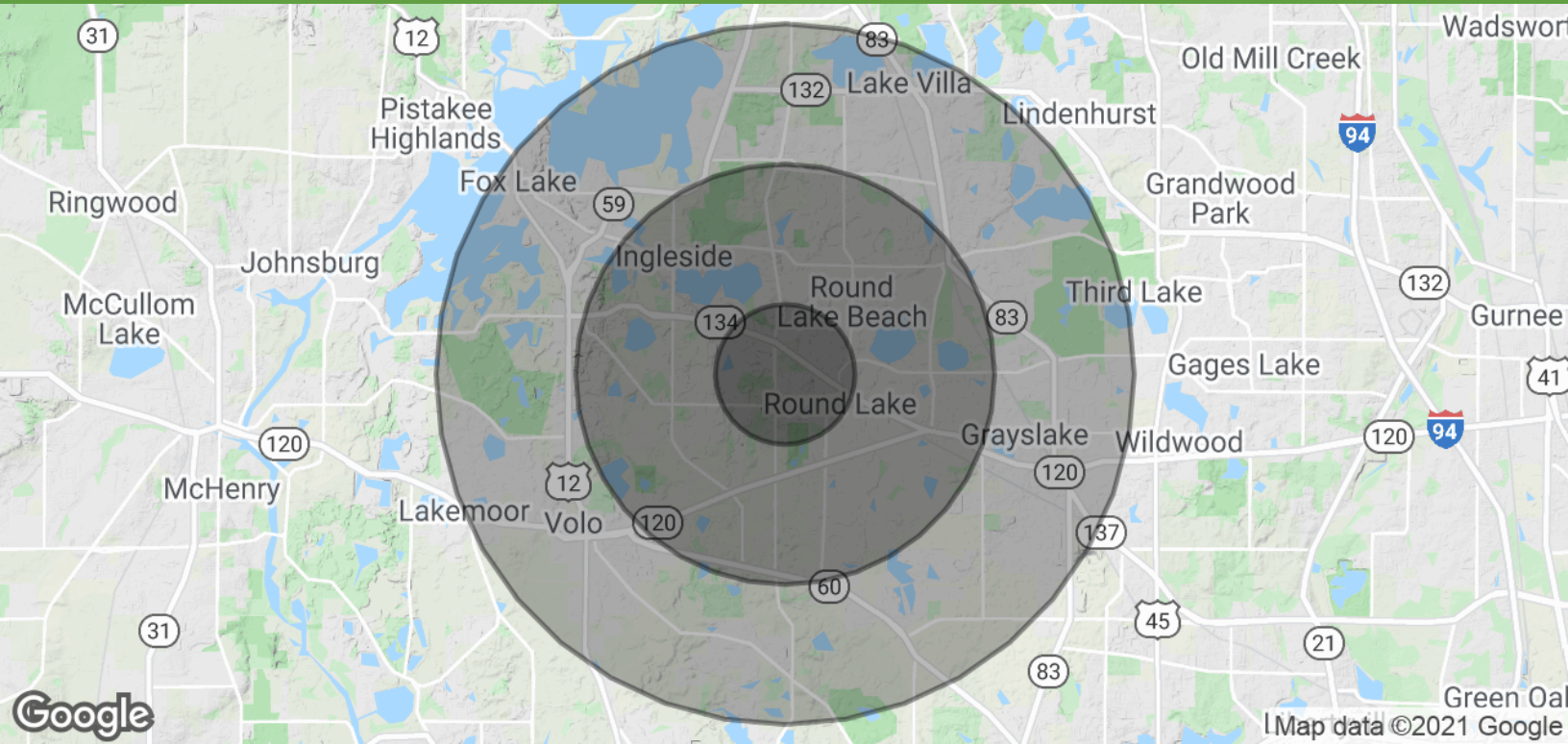
www.SperryCGA.com

929 Hart Rd.

929 HART RD. , ROUND LAKE, IL 60073

FOR SALE

Special Purpose Property



POPULATION

	1 MILE	3 MILES	5 MILES
Total Population	7,162	63,374	123,838
Average age	29.2	30.7	33.1
Average age (Male)	28.5	30.2	32.7
Average age (Female)	30.0	30.7	33.1

HOUSEHOLDS & INCOME

	1 MILE	3 MILES	5 MILES
Total households	2,347	20,475	41,722
# of persons per HH	3.1	3.1	3.0
Average HH income	\$65,409	\$70,143	\$82,314
Average house value	\$186,364	\$233,610	\$265,868

* Demographic data derived from 2010 US Census



www.SperryCGA.com

Wayne Kurchina, CCIM, CIPS

MANAGING BROKER/OWNER

815.344.8900

wayne.kurchina@sperrycga.com

IL #471.000538 | WI #56313-090

Each office independently owned and operated.

We obtained the information above from sources we believe to be reliable. However, we have not verified its accuracy and make no guarantee, warranty or representation about it. It is submitted subject to the possibility of errors, omissions, change of price, rental or other conditions, prior sale, lease or financing, or withdrawal without notice. We include projections, opinions, assumptions or estimates for example only, and they may not represent current or future performance of the property. You and your tax and legal advisors should conduct your own investigation of the property and transaction.