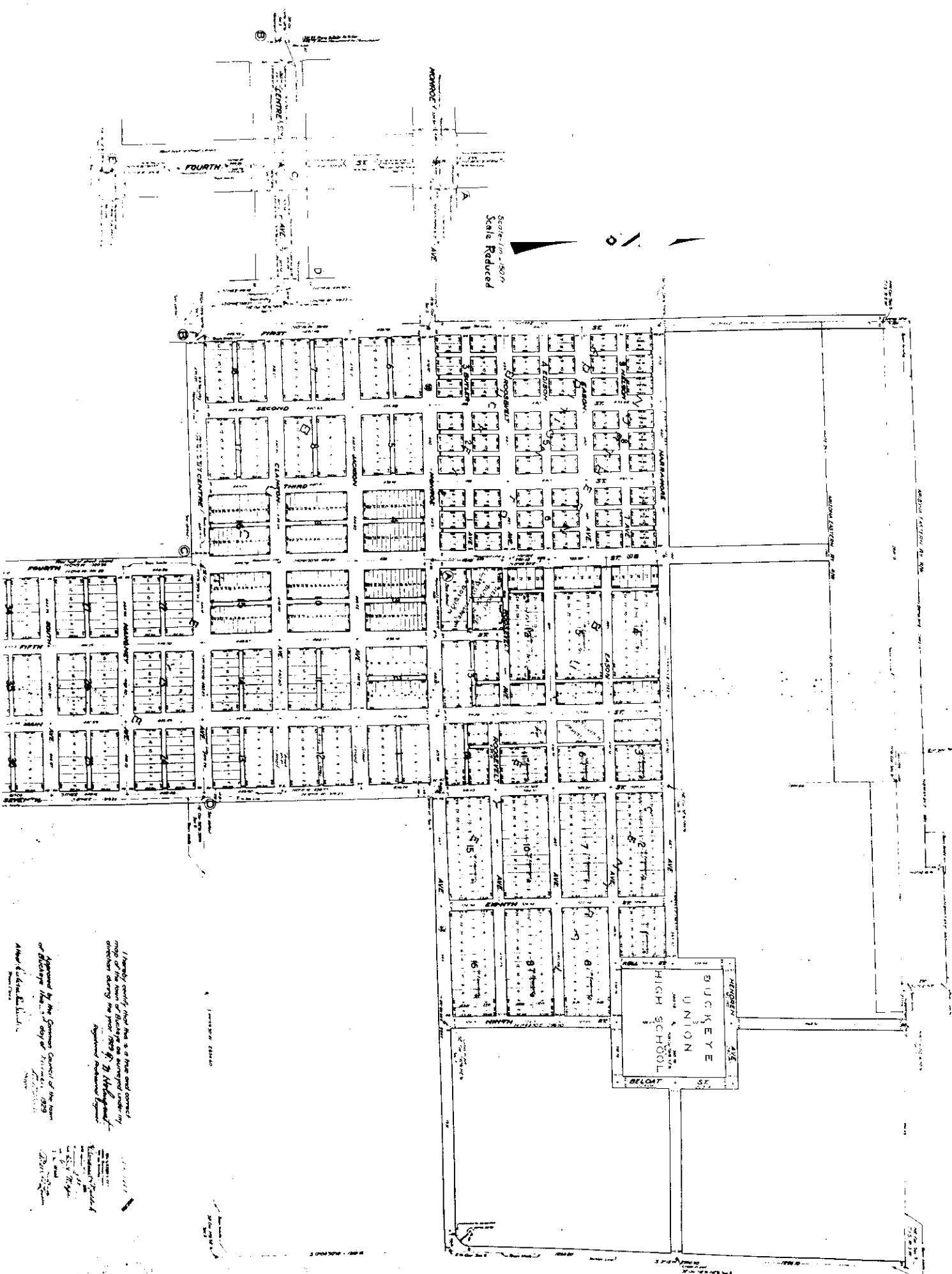


BUCKEYE

A TOWNSHIP



Scale 1" = 200'
Scale Reduced

I hereby certify that this is a true and correct map of the town of Buckeye as surveyed under my direction during the year 1887 by J. H. Hildreth.

Approved by the General Council of the town of Buckeye this 15th day of March 1889.

Attest: J. H. Hildreth, Surveyor.

1889

Wm. H. Hildreth

Surveyor

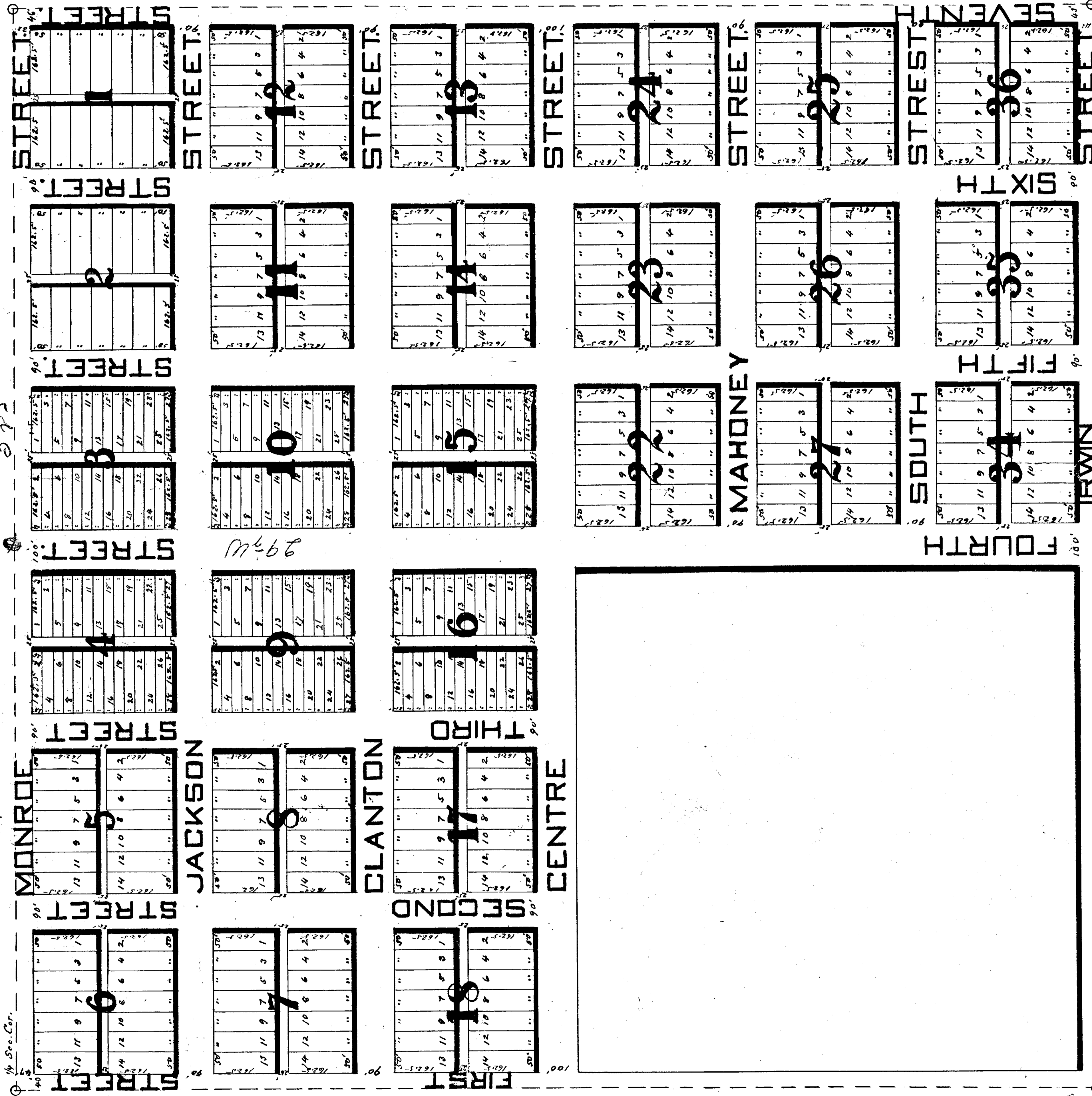
BUCKEYE

A Replat of Blocks 1, 2, 3, 4, 5, 6, 7, 8, 9, 10, 11, 12, 13, 14, 15, 16, 17, 18, 22, 23, 24, 25, 26, 27, 34, 35, and 36 in the Town of Sidney in

MARICOPA COUNTY.

ARIZONA.

Scale 1" = 200'



9000

RECORDERS OFFICE
Phoenix, Maricopa Co., A. T.

This was recorded at request of

J. N. Clanton

NOV 9 1910

1 20 P.

4 of Map

Reg. 4 44.45

C. E. TERPIL
County Records

W. Laughlin

SW Cor. Sec.
71 S. 63 W.

FOR DEDICATION AND EXPLANATION SEE PAGE 45.

1/4 Sec. Cor.

KNOW ALL MEN BY THESE PRESENTS.

That the undersigned decedents, each one of whom is the sole owner of the parcel of parcels of real estate, the description of which is set following his name in the subjoined list all of the lots and blocks therein mentioned being in and a part of the Townsite of Sidney in Maricopa County, Arizona, To-wit:

- T.N. Clanton..... All of Blocks 1, 2, 3, 5, 8, 9, 12, 16, 17 and 36, Lots 1, 2, 3, 5, 6, 7, 8, 9, 10, 11, 12, 13 and 14 in Block 10, Lots 7, 12, and 14 in Block 11; Lots 1, 3, 5, 6, 7, 8, 9, 10, 11 and 13 in Block 13; Lots 1, 3, 5, 7, 9 and the E 1/2 of Lot 12 in Block 14; Lots 2, 3, 4, 5, 6, 7, 8, 9, 10, 11, 12, 13 and 14 in Block 15; Lots 2, 4, 6, 7, 8, 10, 12, and 14 in Block 22; Lots 2, 3, 4, 5, 6, 8, 9, 10, 11, 12, 13, and 14 in Block 25; Lots 5, 6, 7, 8, 10, 12, 13 and 14 in Block 26; Lot 2 in Block 23; Lots 3, 4, 6, 8, 9, 10, 11, 12 and 14 in Block 24; Lots 1, 2, 3, 4, 5, 6, 7 and 8 in Block 35. H:E. Kell..... Lots 1, 2, 3, 4, 5, 6, and 8 in Block 14, Lot 1 in Block 15; Lots 1, 3, 5, 8 and 10 in Block 23, Lot 1 in Block 25, Lot 2 in Block 26

- L.H. Thayer..... All of Block 6. Evelyn Nye..... Lots 11 and 13 in Block 7 W.R. Long..... Lot 4 in Block 10 School District No. 33..... Lots 1, 2, 3, 4, 5, and 6 in Block 11 Baptist Church..... Lots 8 and 10 in Block 11 W.H. South..... Lots 9 and 11 in Block 11. Mary E. Mills..... Lot 13 in Block 11 Manuel Cortez Sr. Lots 2 and 4 in Block 13 George Brum..... Lots 12 and 14 in Block 13 Maricopa County..... Lot 10 in Block 14 P.T. Hurley..... Lots 11 and 13 in Block 14, Lot 7 in Block 25; Lots 9 and 11 in Block 26 Cora L. Johnson..... W 1/2 of Lot 12 in Block 14, S. 102 1/2 ft. of Lot 14 in Block 14; Lots 7 and 9 in Block 23, W 1/2 of Lot 13 in Block 23; All of Blocks 27 and 34 N. 60 ft. of Lot 14 in Block 14. Frank Johnson..... All of Block 18 Jessie May Cleaud..... Lots 1, 3 and 5 in Block 22. Lot 9 in Block 22; Lots 9, 10, 11, 12, 13 and 14 in Block 35 Pablo Perez..... Lots 11 and 13 in Block 22. Ches. W. Clenton..... Lots 4 and 6 in Block 23; Lot 4 in Block 26. D. Bales..... Lot 11 and the E 1/2 of Lot 13 in Block 23 May W. Self..... Lots 12 and 14 in Block 23 Manuel Cortez Jr..... Lot 1 in Block 24 Geo. N. Marshall Co..... Lot 2 in Block 24 Edward W. Keene..... Lots 5 and 7 in Block 24 B.A. Haddell..... Lot 13 in Block 24 Trustees of M.E. Church. South..... Lot 1 in Block 26. George Bagley..... Lot 3 in Block 26

have caused the same to be replatted into Blocks, lots, streets and Alleys, the dimensions of which are shown hereon in feet, and desire that the same shall be known as BUCKE X

Blocks 5, 6, 7, 8, 11, 12, 13, 14, 17, 18, 22, 23, 24, 25, 26, 27, 34, 35 and all the lots therein in of this plat are identical in location with the Blocks and lots of the same numbers in the townsite of Sidney. Blocks 1, 2, 3, 4, 9, 10, 15 and 16 of this plat are identical in location with the blocks of the same numbers in the townsite of Sidney but the lots in said Blocks are as shown hereon. And they hereby dedicate to the use of the public forever, as highways, all of the streets and alleys shown hereon.

Dated this 10th day of October 1910. Trustees for School District No. 33 May W. Self Wm. B. Long L.H. Thayer C.W. Clenton Cora L. Johnston Walter Jones Admin for J.F. Harley P.T. Harley Geo. N. Marshall Co. Mary E. Mills (George Brum) By S.P. Hofer Atty in fact. Leo. M. Hoghe Chairman Board of Supervisor Maricopa Co.

Attest: Wm. E. Thomas Clerk Board of Supervisor.

TERRITORY OF ARIZONA SS COUNTY OF MARICOPA

Before me Ralph A. Nye a Notary public in and for said County, personally appeared H.E. Kell known to me to be the person whose name is signed to the foregoing instrument and acknowledged to me that he executed the same for the purposes and consideration therein expressed.

Given under my hand and seal of office this Ninth day of November A.D. 1910.

Ralph A. Nye Notary public.

My commission expires May 22nd 1913.

TERRITORY OF ARIZONA

COUNTY OF MARICOPA

Before me H.E. Kell a notary public in and for Maricopa County, Arizona, personally appeared T.N. Clenton, L.H. Thayer, E.W. Keene, M. Cortez Sr., M.C. Cortez Jr., G.N. Bagley, D. Bales, J.J. Gilson Pablo Perez, D.P. Clenton, Riley Johnston, May W. Self, Wm. B. Long, C.W. Clenton, Cora L. Johnston, Walter Jones, Evelyn Nye and L.H. Thayer, Wm. B. Long and Homer Davis, Trustees for School Dist. #33 and Homer Davis and W.K. Barkley, Trustees for Buckeye Baptist Church known to me to be the persons whose names are subscribed to the foregoing instrument and acknowledged to me that they executed the same for the purposes and consideration therein expressed.

Given under my hand and official seal this 9th day of Nov. 1910.

H.E. Kell Notary Public.

My com. expires July 22 1914.

TERRITORY OF ARIZONA

COUNTY OF MARICOPA

Before me H.E. Kell a notary public in and for Maricopa County, Arizona Territory personally appeared P.T. Hurley, Geo. N. Marshall, Mary E. Mills, George Brum by S.P. Hofer, Atty. in fact, Leo. M. Hoghe Chairman Board of Supervisors and Wm. E. Thomas Clerk Board of Supervisors, known to me to be the persons whose names are subscribed to the foregoing instrument and acknowledged to me that they executed the same for the purposes and consideration therein expressed.

Given under my hand and seal of office this 21st day of November 1910.

H.E. Kell Notary Public.

My commission expires July 22nd 1914.

Approved this 21st day of November 1910.

Leo. M. Hoghe

Chairman of the Board of Supervisors, Maricopa Co.

