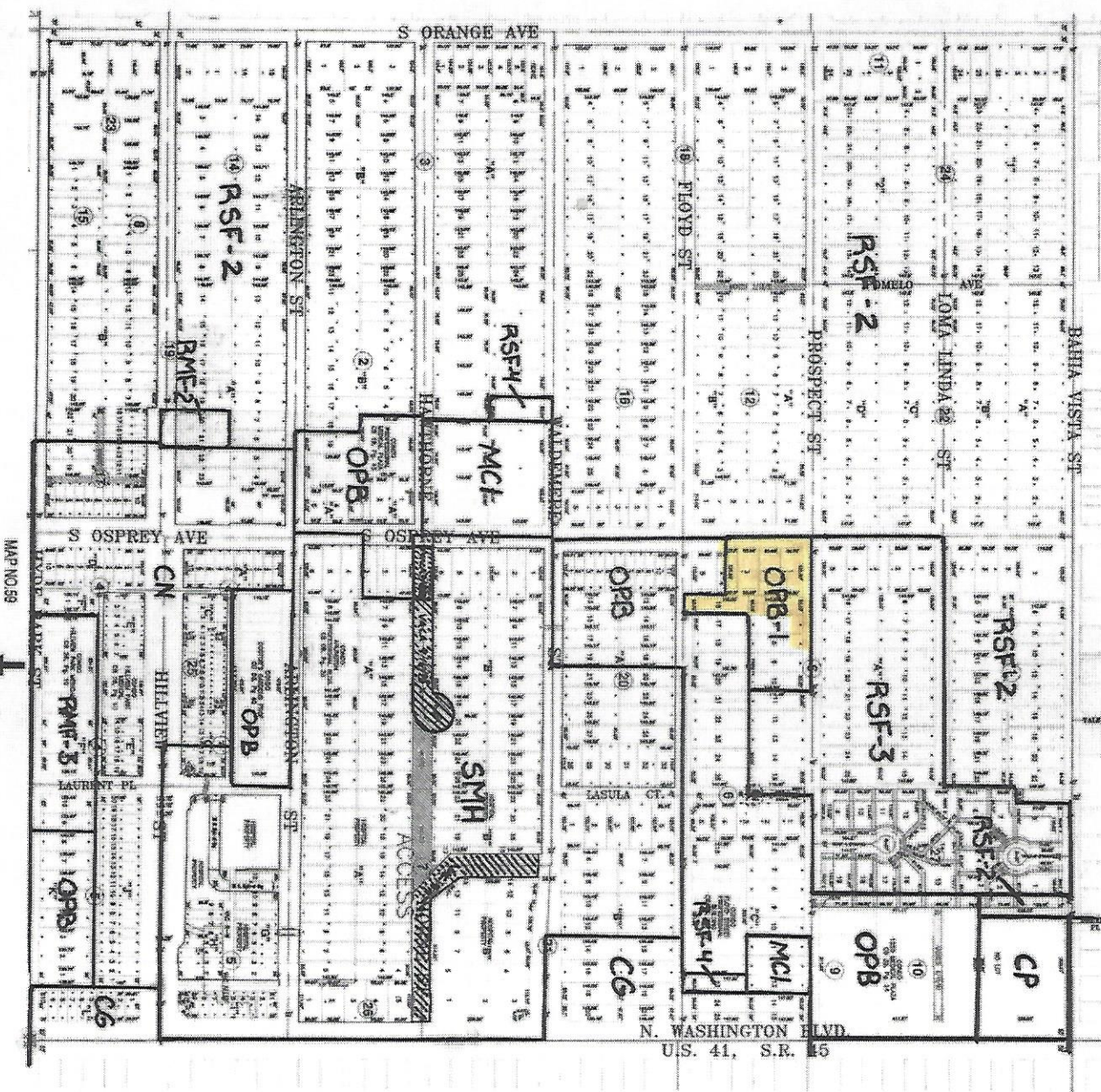


MAP NO. 53



MAP NO. 49
SE 1/4-SEC. 30-36-18

MAP NO. 59

MAP NO. 55

REVISED
05/12/72
2/23/78
12/07/78
8/15/08
1/05/83
1/14/83
2/17/82
1/15/85
3/18/85
3/08/90
9/18/09

54

SUBDIVISION INDEX

NO.	NAME	PR./PG.
1	BADGER HEIGHTS SUB.	1/75
2	E. F. BOOTH'S SUB.	1/74
3	LEWIS COMPT'S SUB.	1/72
4	CITY HALL SQUARE SUB.	2/75
5	CITY HALL SQUARE SUB., UNIT NO. 2	2/125
6	FLOTT & CAMERON SUB.	1/17
7	HERRICK'S SUB.	1/53
8	HILL SUB.	1/59
9	HOUSE'S SUB., RESUB OF LOT "A"	4/74
10	JOHNSON'S SUB.	2/18A
11	MATHERN SUB.	1/17
12	MCKERMAN SUB.	1/219
13	MCKINNEY-WILSON-POTTEN'S SUB.	1/8
14	MAKINER'S SUB.	1/179
15	MIRWOOD MAJOR SUB.	2/85
16	MORRICK SQUARE SUB.	2/141
17	MORTON TERRACE SUB.	1/54
18	NICHOLS SUB.	1/48
19	PINE GROVE SUB.	2/161
20	PINE GROVE SUB., A RESUB. OF BLOCK "B"	3/93
21	FOUNTO PLACE RESUB.	1/4
22	FRATER'S SUB.	N.R.
23	SENNOLE HEIGHTS SUB.	N/58
24	SUNWAY SUB., A RESUB OF LOTS 5-12	8/31
25	BLOCK "C", CITY HALL SQUARE SUB.	2/163
26	WASHINGTON BOULEVARD SUB.	40/34A
27	HANDRAH PARK, A REPLAT	

Last Amended by:
Ordinance No. 18-5235
Date: 4/16/18

Last Amended by:
Ordinance No. 18-5248
Date: 6/18/18

Last Amended by:
Ordinance No. 18-5236
Date: 4/16/18

CITY OF SARASOTA
ENGINEERING DIVISION
FLORIDA

SCALE: 1" = 200' DATE: AUG. 09