



CHRISTIANSEN
COMMERCIAL REAL ESTATE

FOR SUBLEASE



FREE-STANDING FORMER PHARMACY

6020 ROBERTO SANCHEZ VILELLA AVE CAROLINA, PR 00982

For More Information

ANDREA SUAREZ

787.778.7000

andrea@christiansencommercial.com

RYAN CHRISTIANSEN, CCIM

787.778.7000

ryan@christiansencommercial.com

CHRISTIANSENCOMMERCIAL.COM

Property Summary



PROPERTY DESCRIPTION

Free-standing former CVS Pharmacy available for sublease built in 2015 consisting approximately 14,600 square feet situated on a 7,461.0212 square meter lot. The property is supported by 120 parking stalls and available thru January 2041.

It is situated in a dense urban setting located on one of the main arteries in the area, Roberto Sanchez Vilella (Campo Rico) Avenue, within the Country Club Development of the Carolina Municipality. Other uses in the area include medical offices, retail stores, fast food establishments, pharmacies, gas stations, banks, and supermarkets, among many others.

- Back-up power generator
- Loading/receiving areas
- Sprinkler and fire safety system

For More Information

ANDREA SUAREZ

787.778.7000

andrea@christiansencommercial.com

RYAN CHRISTIANSEN, CCIM

787.778.7000

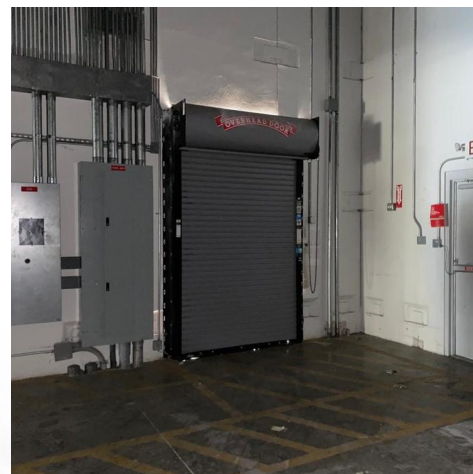
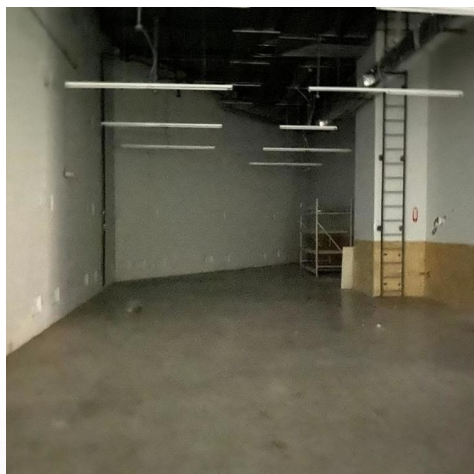
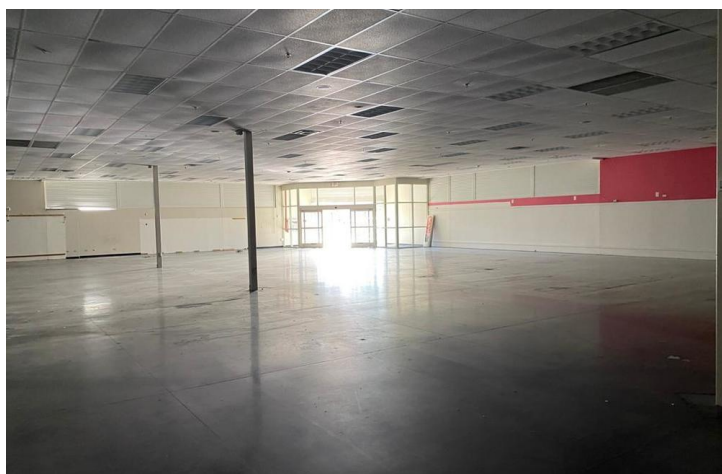
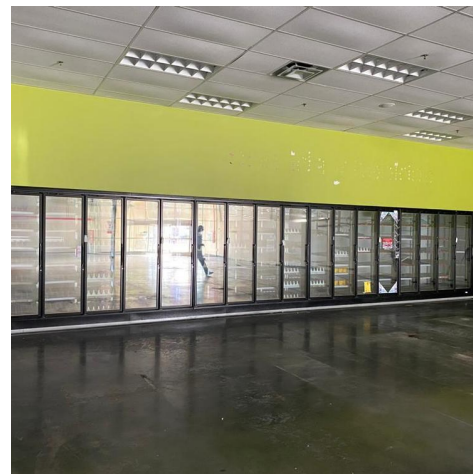
ryan@christiansencommercial.com

OFFERING SUMMARY

Lease Rate:	\$40,000.00 per month (NNN)
Lot Size:	1.844 Acres
Building Size:	14,600 SF

CHRISTIANSENCOMMERCIAL.COM

Additional Photos



For More Information

ANDREA SUAREZ

787.778.7000

andrea@christiansencommercial.com

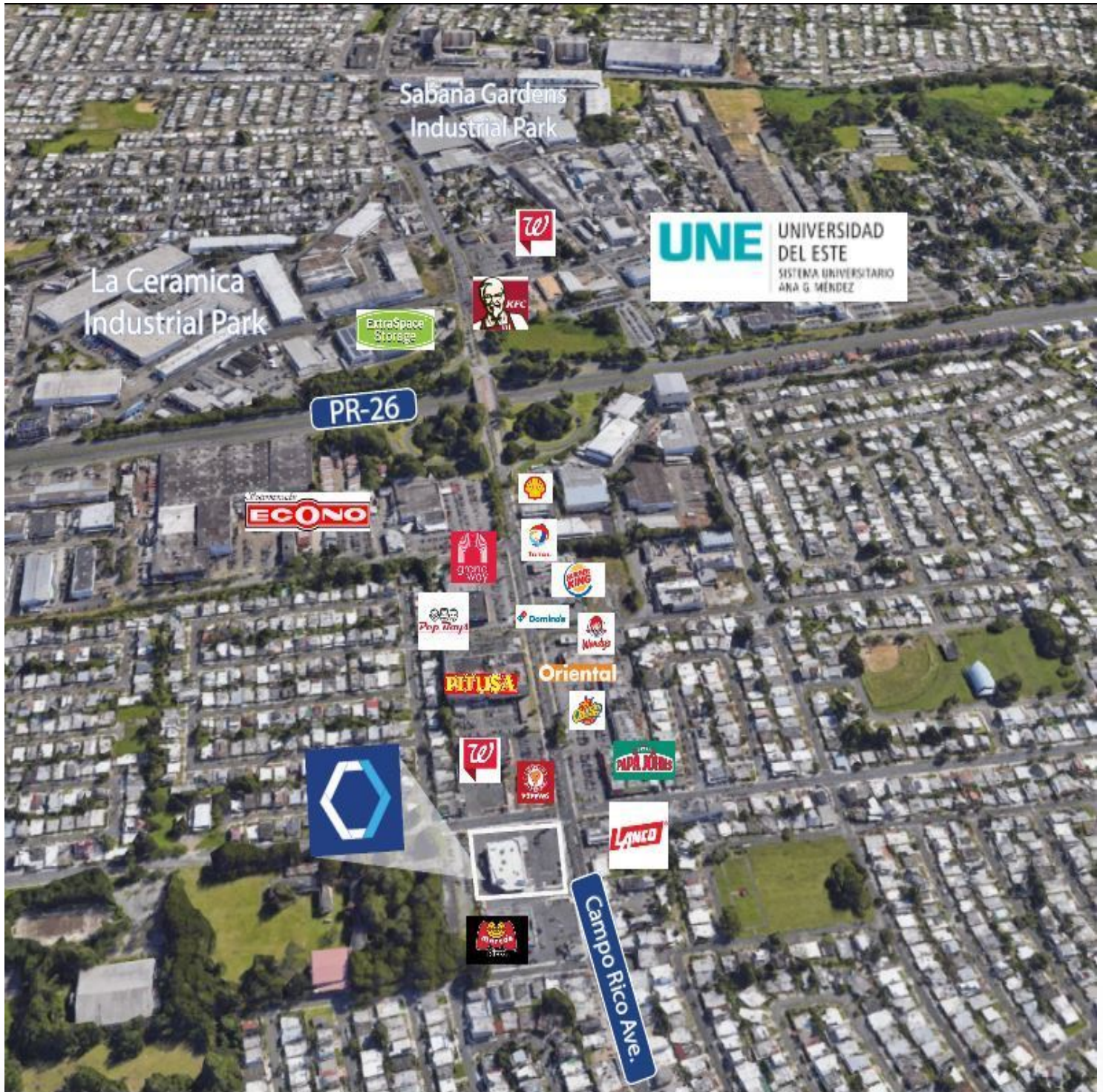
RYAN CHRISTIANSEN, CCIM

787.778.7000

ryan@christiansencommercial.com

CHRISTIANSENCOMMERCIAL.COM

Location Map



For More Information

ANDREA SUAREZ

787.778.7000

andrea@christiansencommercial.com

RYAN CHRISTIANSEN, CCIM

787.778.7000

ryan@christiansencommercial.com

CHRISTIANSENCOMMERCIAL.COM