

**FOR
SALE**

1+ ACRE CORNER LOT
COMMERCIAL ZONED

Apopka Blvd and Lakeville Road
Apopka, FL 32703



CONTACT

Tim Corder
407.492.0857 *mobile*
Tim@ResultsREPartners.com

Results Real Estate Partners, LLC
Licensed Commercial Real Estate Brokers
108 Commerce Street, Suite 200
Lake Mary, Florida 32746

407.647.0200 *main*
407.647.0205 *fax*

www.ResultsREPartners.com

PROPERTY HIGHLIGHTS

- Commercial Zoning that Allows for Multiple Use
- Hard Corner Lot with Red Light
- Over One Acre Site Zoned C-N
- Multiple Access Points Located on Property Perimeter
- Easy Access to Highway 441, SR 414, SR 429, and SR 436
- Near Shopping Centers, Restaurants and Other Retail
- Excellent Area Demographics and Traffic Counts

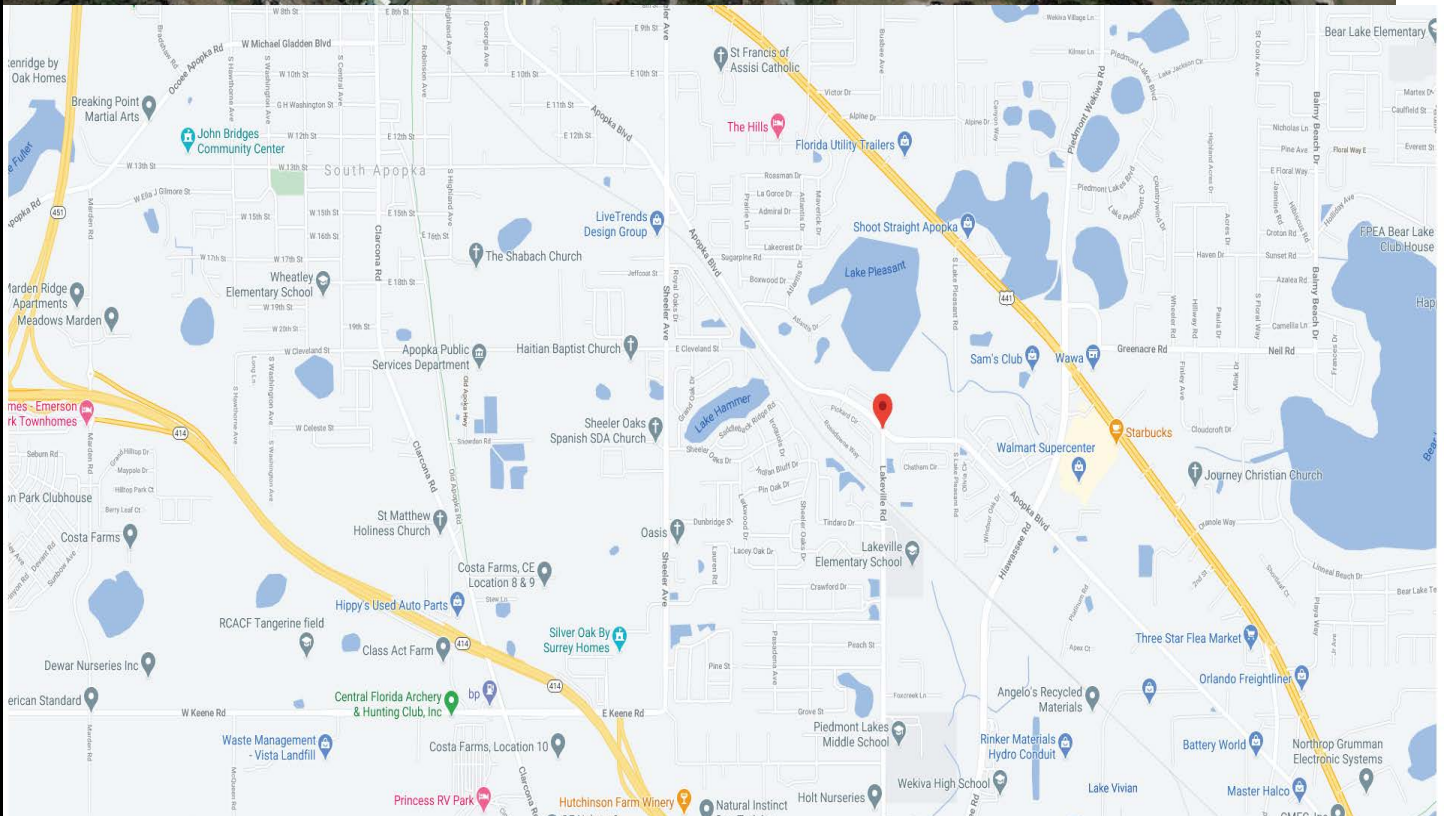
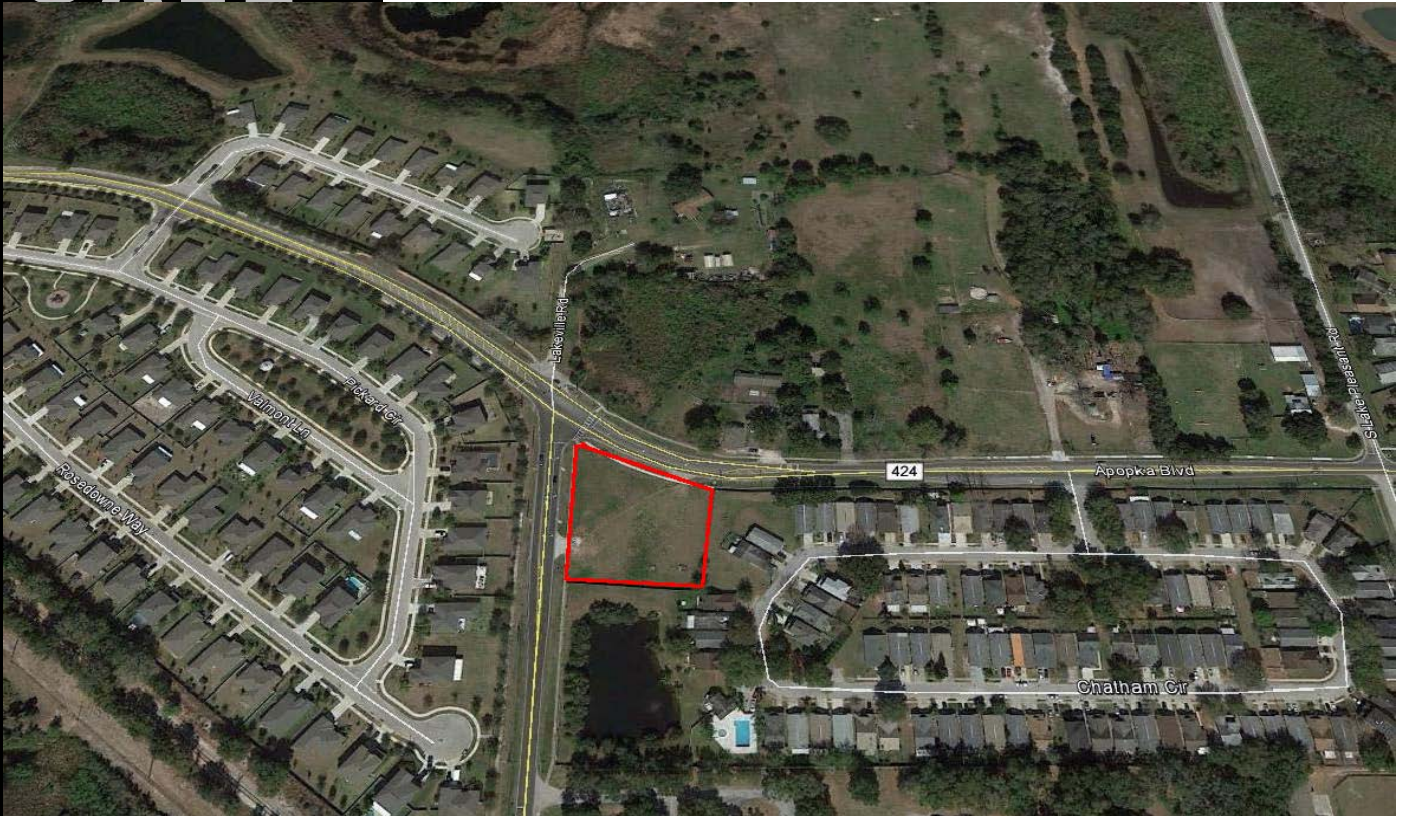
Sales Price: \$265,000

This information is from sources we deem reliable and is subject to prior sale, lease, withdrawal without notice, or change in prices, rates, or conditions. No representation is made as to the accuracy of any information furnished.

**FOR
SALE**

**1+ ACRE CORNER LOT
COMMERCIAL ZONED**

Apopka Blvd and Lakeville Road
Apopka, FL 32703



This information is from sources we deem reliable and is subject to prior sale, lease, withdrawal without notice, or change in prices, rates, or conditions. No representation is made as to the accuracy of any information furnished.