

POINT-"A" TO POINT-"B"

BEARING	DISTANCE
1-S 45°-41'-35"E	42.08'
2-S 59°-02'-18"E	54.73'
3-S 47°-06'-38"E	129.21'
4-S 12°-35'-34"E	15.52'
5-S 37°-51'-48"E	100.10'
6-S 64°-41'-33"E	60.23'
7-S 47°-52'-39"E	198.11'
8-S 81°-31'-10"E	32.92'
9-S 64°-56'-51"E	23.73'
10-S 31°-46'-21"E	29.23'
11-S 39°-46'-58"E	43.66'
12-S 68°-05'-28"E	99.15'
13-S 59°-38'-22"E	46.42'
14-S 82°-10'-24"E	38.56'
15-S 68°-06'-24"E	78.93'
16-S 57°-43'-55"E	51.83'



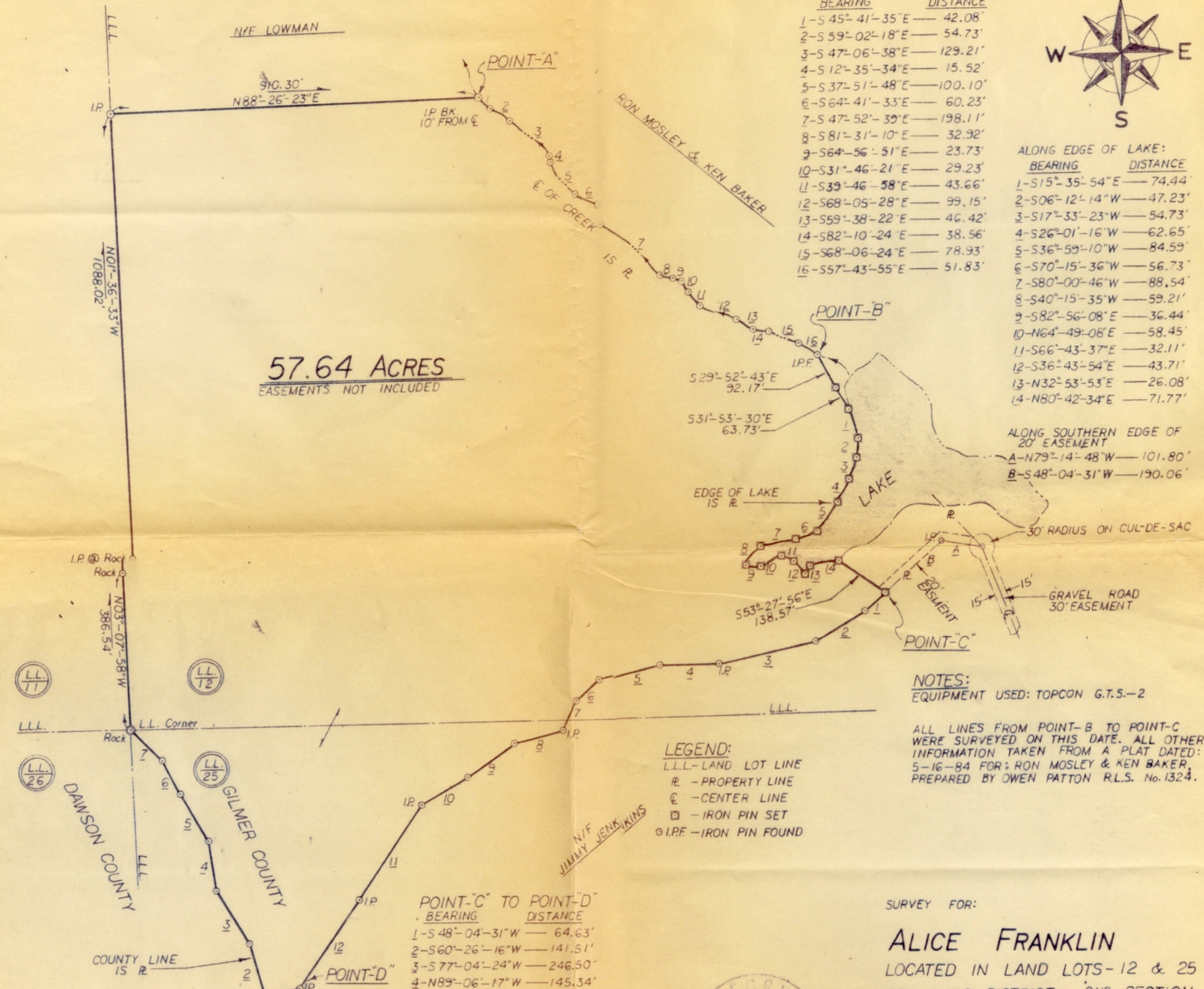
ALONG EDGE OF LAKE:

BEARING	DISTANCE
1-S 15°-35'-54"E	74.44'
2-S 06°-12'-14"W	47.23'
3-S 17°-33'-23"W	54.73'
4-S 26°-01'-16"W	62.65'
5-S 36°-59'-10"W	84.59'
6-S 70°-15'-36"W	56.73'
7-S 80°-00'-46"W	88.54'
8-S 40°-15'-35"W	59.21'
9-S 82°-56'-08"E	36.44'
10-N 64°-49'-08"E	58.45'
11-S 66°-43'-37"E	32.11'
12-S 36°-43'-54"E	43.71'
13-N 32°-53'-53"E	26.08'
14-N 80°-42'-34"E	71.77'

ALONG SOUTHERN EDGE OF 20' EASEMENT

A-N 79°-14'-48"W	101.80'
B-S 48°-04'-31"W	190.06'

**57.64 ACRES**  
EASEMENTS NOT INCLUDED



NOTES:  
EQUIPMENT USED: TOPCON G.T.S.-2

ALL LINES FROM POINT-B TO POINT-C WERE SURVEYED ON THIS DATE. ALL OTHER INFORMATION TAKEN FROM A PLAT DATED: 5-16-84 FOR: RON MOSLEY & KEN BAKER, PREPARED BY OWEN PATTON R.L.S. No. 1324.

LEGEND:  
L.L.L.-LAND LOT LINE  
R - PROPERTY LINE  
C - CENTER LINE  
IP - IRON PIN SET  
IP.F - IRON PIN FOUND

POINT-"C" TO POINT-"D"

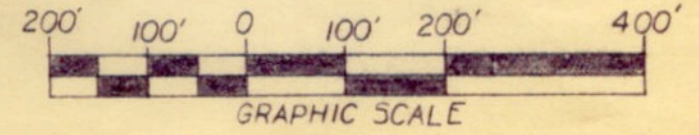
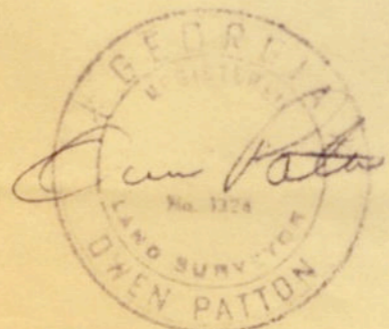
BEARING	DISTANCE
1-S 48°-04'-31"W	64.63'
2-S 60°-26'-16"W	141.51'
3-S 77°-04'-24"W	246.50'
4-N 89°-06'-17"W	145.34'
5-S 75°-38'-17"W	129.25'
6-S 47°-34'-58"W	78.30'
7-S 24°-47'-07"W	81.39'
8-S 75°-56'-41"W	125.31'
9-S 53°-59'-53"W	144.55'
10-S 60°-35'-05"W	130.53'
11-S 33°-59'-52"W	277.83'
12-S 34°-30'-39"W	259.79'

ALONG COUNTY LINE:

BEARING	DISTANCE
1-S 78°-03'-30"W	86.90'
2-N 16°-10'-57"W	134.61'
3-N 32°-51'-06"W	150.85'
4-N 08°-33'-41"W	122.13'
5-N 31°-21'-56"W	132.99'
6-N 28°-29'-32"W	91.84'
7-N 45°-47'-42"W	109.48'

Patton - Patton Inc.  
P. O. Box 286  
Gainesville, GA 30603  
404-533-8492

SURVEY FOR:  
**ALICE FRANKLIN**  
LOCATED IN LAND LOTS-12 & 25  
5TH LAND DISTRICT ~ 2ND SECTION  
GILMER COUNTY, GEORGIA



SCALE: 1" = 200' DATE: 5-16-1989  
JN.89-287