

**FOR SALE OR LEASE
REGENCY INDUSTRIAL PARK**



11220 Space Blvd., Orlando, Florida 32837



**Cross-Dock Distribution or Manufacturing Warehouse
122,700 ± SF on 8.47 ± Acres**

**Asking Price: \$4,600,000 (\$37.50 psf)
Lease Rate: \$2.95 NNN Estimated 2012 OE \$.80 PSF**

- Year Built 1973 & 1994
- Office Space 9,000 SF ± plus 5,000 SF of shop & 200 SF of shipping office
- Dock Doors 16-8' with pit levelers , 3-8' x 10' with EOD levelers, 1-8' x 10' drive in with 5' wide ramp
- Electric 3,200 Amp- 3 phase plus
- Ceiling Height 20' eve to 27' peak
- Available Occupancy: Immediate
- Excellent Location – Florida Turnpike Signage

For further information contact:

Cory Kroeger
cory@dkrproperties.net

Greg Rebman
greg@dkrproperties.net

Craig Duke
craig@dkrproperties.net

DKR Properties

1053 N. Orlando Ave., Suite 4, Maitland, FL 32751
Phone: 407-696-3088 · Fax: 407-696-3089
Greg Rebman: greg@dkrproperties.net
Cory Kroeger: cory@dkrproperties.net
Craig Duke: craig@dkrproperties.net
www.dkrproperties.net

Details contained herein are deemed to be reliable but cannot be warranted by Duke Kroeger Rebman Properties or the seller. Subject to errors, omissions, prior sale or withdrawal without notice.

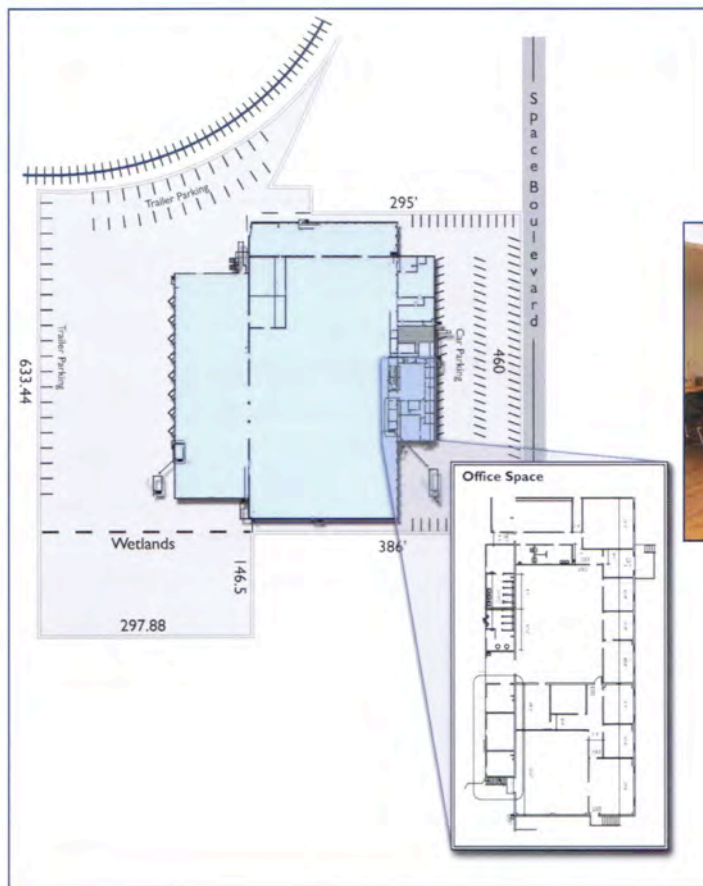
FOR SALE OR LEASE REGENCY INDUSTRIAL PARK



PROPERTY DESCRIPTION

The property is a 122,700 ± square foot manufacturing/distribution warehouse facility located in the Regency Industrial Park in Orlando Florida. The first phase was constructed in 1974 with an expansion in 1994. There is currently electrical distribution and air lines throughout the facility to facilitate manufacturing, however, the facility could very easily be used for bulk warehousing.

Along with its excellent location in South Orlando with visibility from the Florida turnpike, the property offers off dock trailer storage, which is relatively rare in the Orlando submarket and would be ideal for many uses including convention services.



For further information contact:

Cory Kroeger
cory@dkrproperties.net
Greg Rebman
greg@dkrproperties.net
Craig Duke
craig@dkrproperties.net

DKR Properties

1053 N. Orlando Ave., Suite 4, Maitland, FL 32751
Phone: 407-696-3088 · Fax: 407-696-3089
Greg Rebman: greg@dkrproperties.net
Cory Kroeger: cory@dkrproperties.net
Craig Duke: craig@dkrproperties.net
www.dkrproperties.net

Details contained herein are deemed to be reliable but cannot be warranted by Duke Kroeger Rebman Properties or the seller. Subject to errors, omissions, prior sale or withdrawal without notice.