

AVAILABLE

8981 SW Busch St

Palm City, FL 34990

Industrial Warehouse or Manufacturing Building



PROPERTY OVERVIEW

Freestanding new construction 9,900 SF steel building. Circulation around building. 13 parking spaces. Truck well for dock high loading. 14' high OH doors at grade. Minimum 17' clear ceiling height. 600 amp 120/208V 3 phase power. LED Lighting. Water and wastewater by private well and septic system. Available 4th Quarter 2020.

OFFERING SUMMARY

Building Size:	9,900 SF
Land Size:	1.98 Acres
Land Use:	Industrial
Zoning:	GI
Available SF:	9,900 SF

Uses allowed under General Industrial Zoning

LEASE RATE: \$9.50/SF NNN

SALE PRICE: \$1,500,000.00

Jeffrey D. Chamberlin
President/Broker, CCIM, SIOR
772.220.4096 x101
chamberlin@slccommercial.com

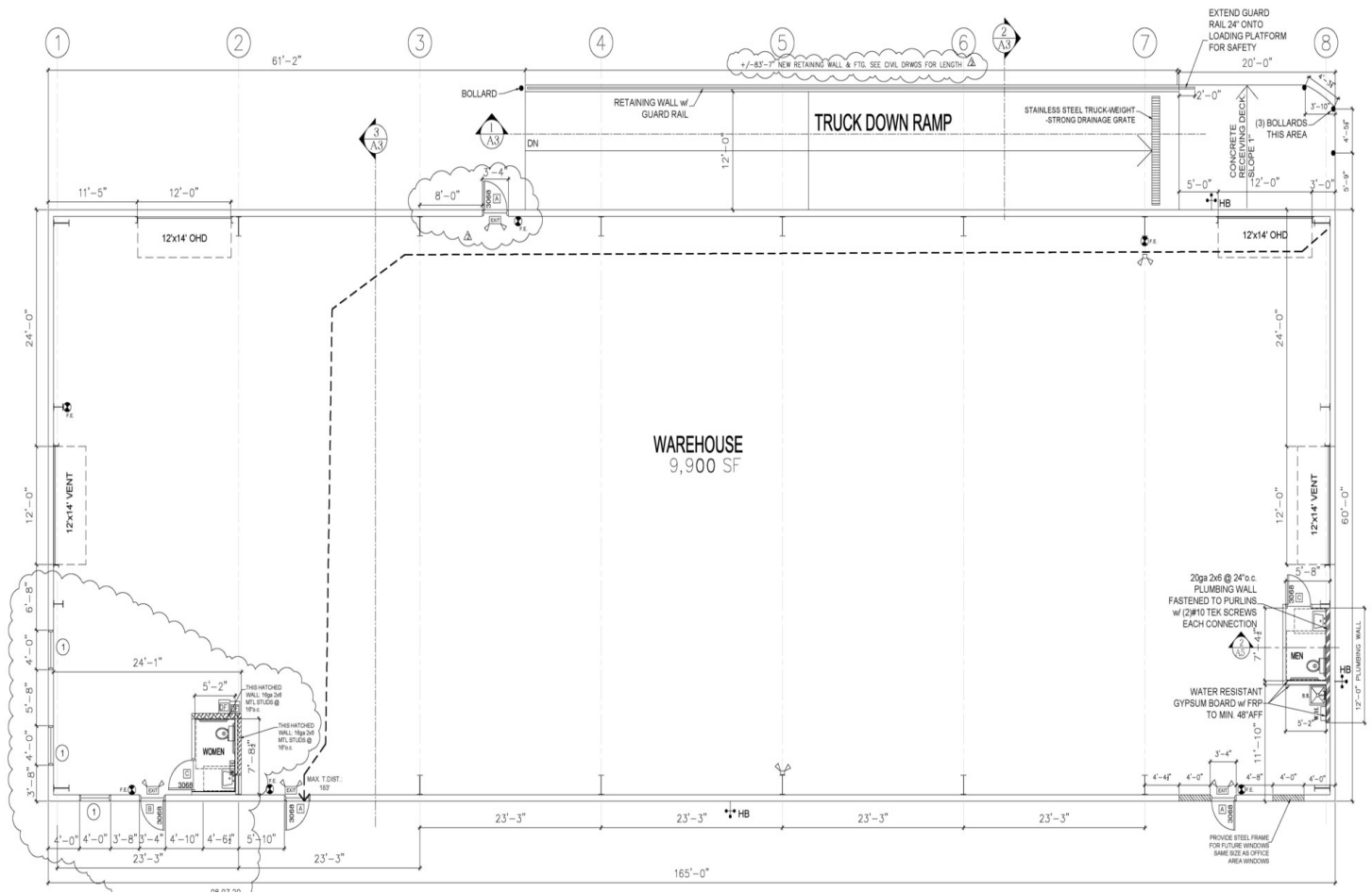
Jaime Chamberlin
Associate
772.486.3330
jaime@slccommercial.com

SLC Commercial
2488 SE Willoughby Blvd
Stuart, FL 34994
772.220.4096 | slccommercial.com


SLC Commercial
Realty & Development

The information contained herein has been obtained from sources believed to be reliable, but no warranty or representation, expressed or implied, is made. All sizes and dimensions are approximate. Any prospective buyer should exercise prudence and verify independently all significant data and property information. This is NOT an offer of sub-agency or co-brokerage.

8981 SW Busch St



Jeffrey D. Chamberlin
 President/Broker, CCIM, SIOR
 772.220.4096 x101
 chamberlin@slccommercial.com

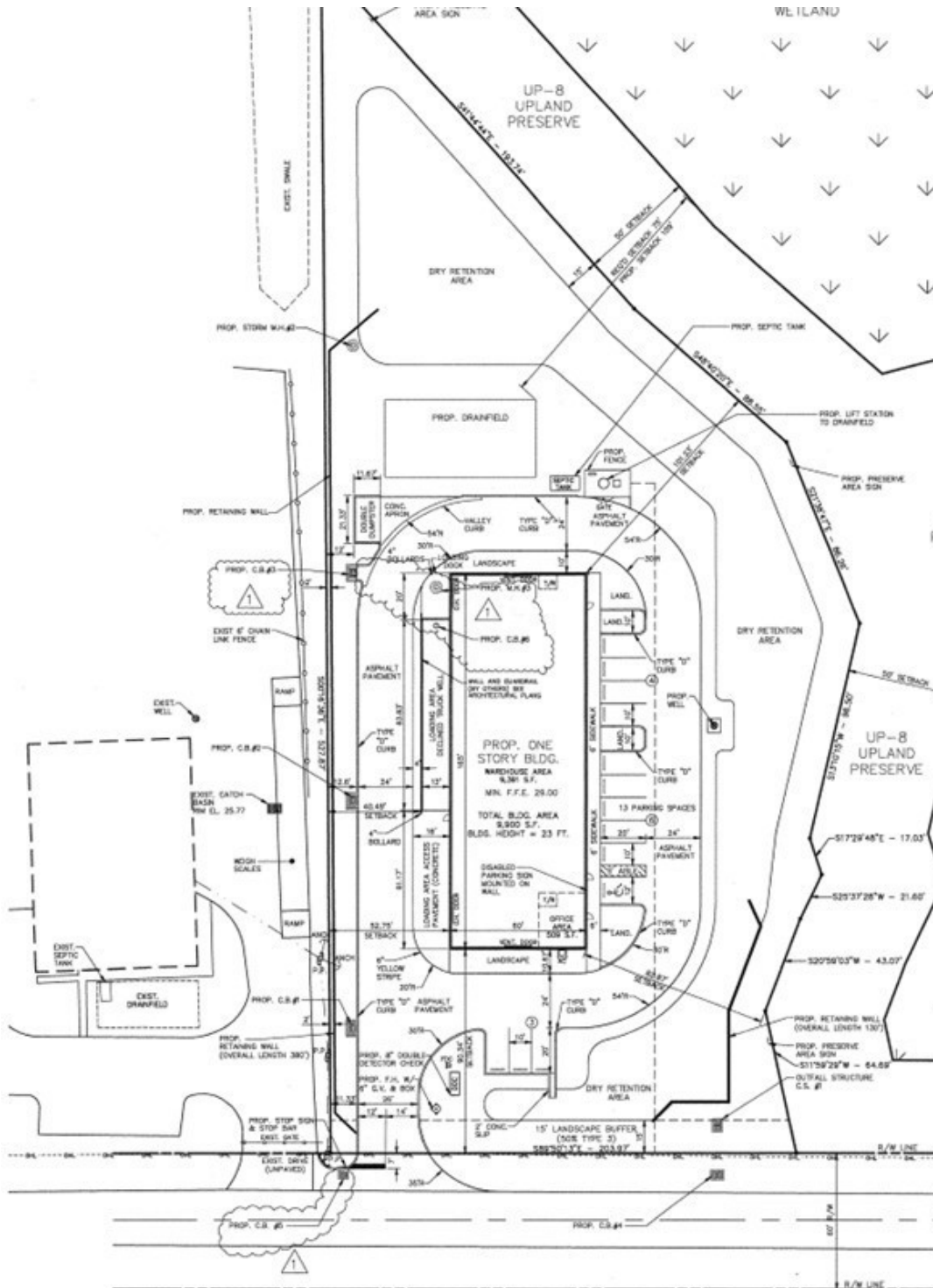
Jaime Chamberlin
 Associate
 772.486.3330
 jaime@slccommercial.com

SLC Commercial
 2488 SE Willoughby Blvd
 Stuart, FL 34994
 772.220.4096 | slccommercial.com



The information contained herein has been obtained from sources believed to be reliable, but no warranty or representation, expressed or implied, is made. All sizes and dimensions are approximate. Any prospective buyer should exercise prudence and verify independently all significant data and property information. This is NOT an offer of sub-agency or co-brokerage.

8981 SW Busch St



Jeffrey D. Chamberlin
 President/Broker, CCIM, SIOR
 772.220.4096 x101
 chamberlin@slccommercial.com

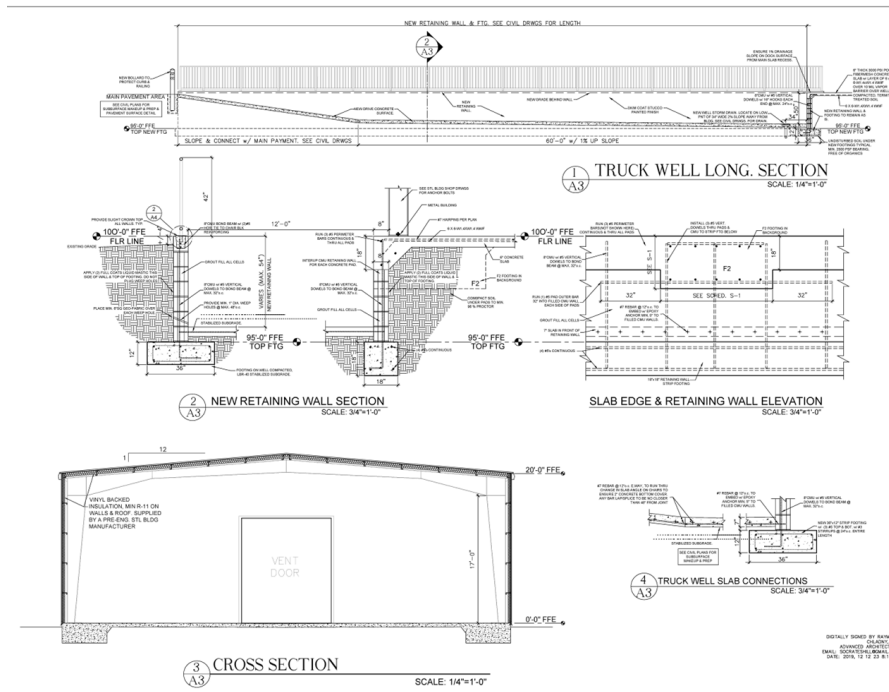
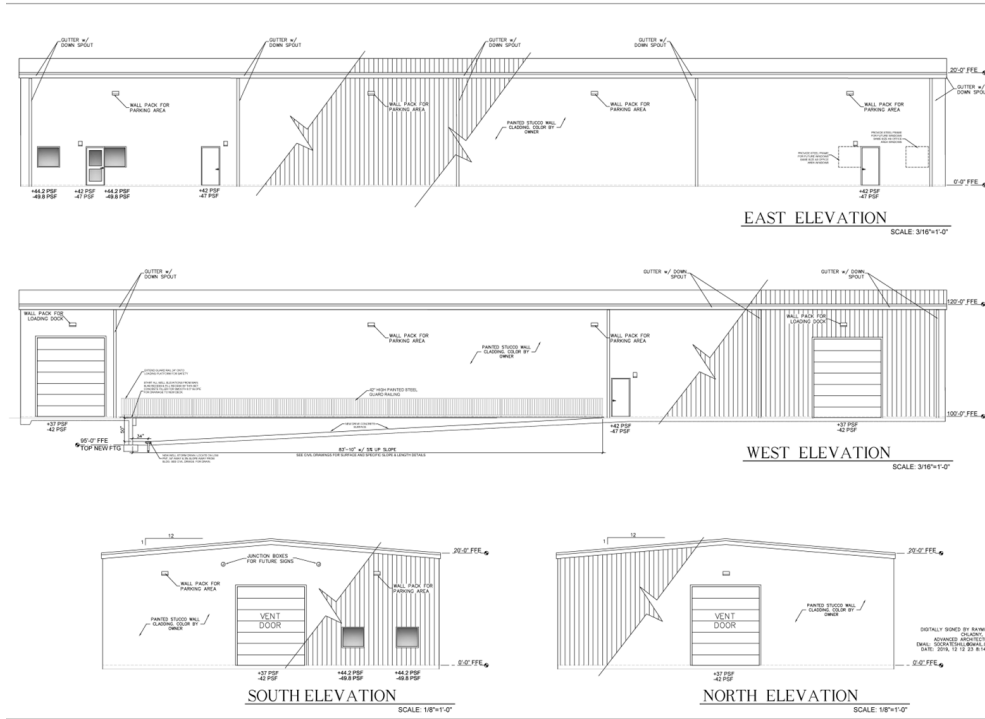
Jaime Chamberlin
 Associate
 772.486.3330
 jaime@slccommercial.com

SLC Commercial
 2488 SE Willoughby Blvd
 Stuart, FL 34994
 772.220.4096 | slccommercial.com



The information contained herein has been obtained from sources believed to be reliable, but no warranty or representation, expressed or implied, is made. All sizes and dimensions are approximate. Any prospective buyer should exercise prudence and verify independently all significant data and property information. This is NOT an offer of sub-agency or co-brokerage.

8981 SW Busch St



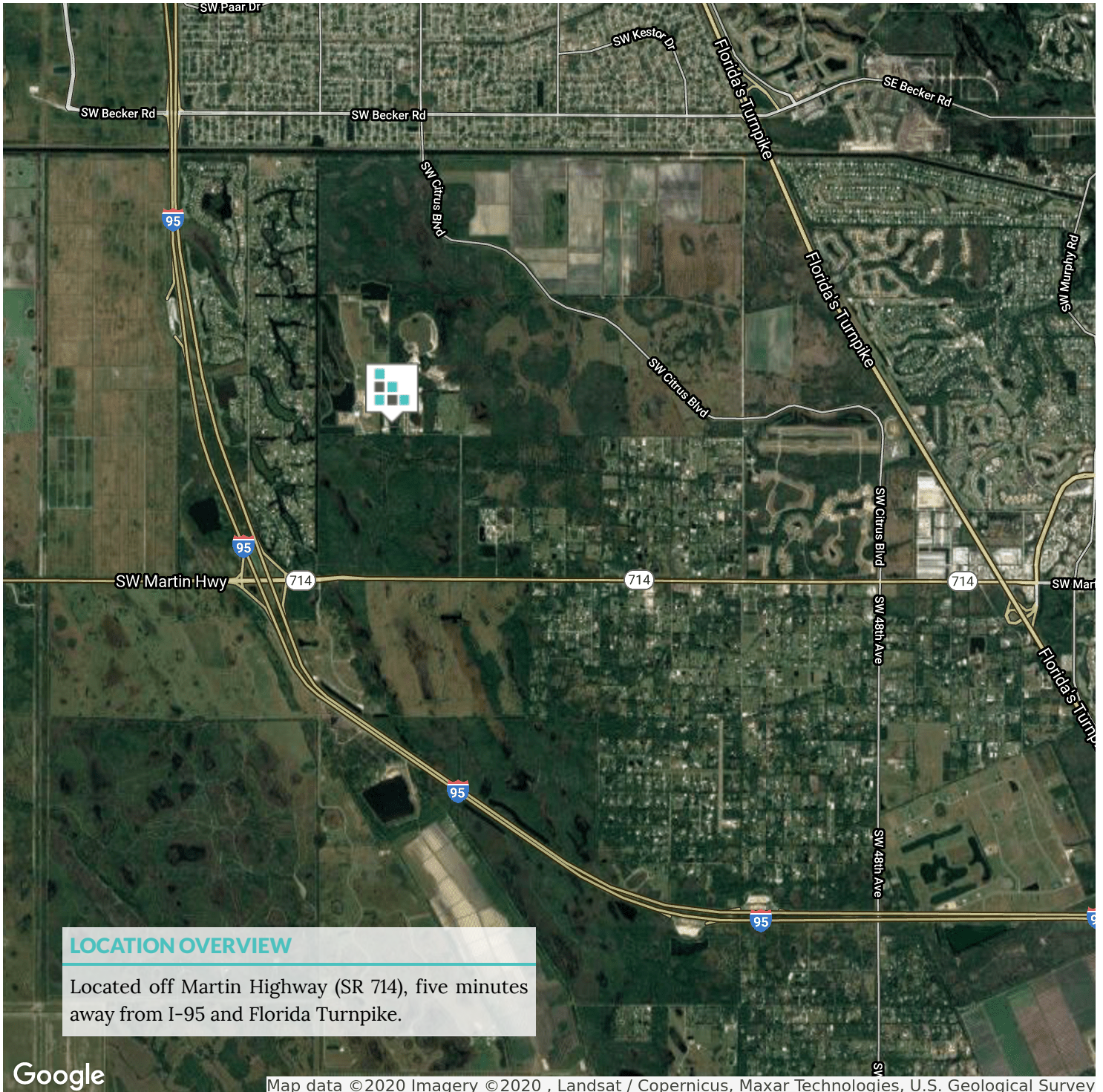
Jeffrey D. Chamberlin
President/Broker, CCIM, SIOR
772.220.4096 x101
chamberlin@slcommercial.com

Jaime Chamberlin
Associate
772.486.3330
jaime@slcommercial.com

SLC Commercial
2488 SE Willoughby Blvd
Stuart, FL 34994
772.220.4096 | slcommercial.com



8981 SW Busch St



LOCATION OVERVIEW

Located off Martin Highway (SR 714), five minutes away from I-95 and Florida Turnpike.

Google

Map data ©2020 Imagery ©2020 , Landsat / Copernicus, Maxar Technologies, U.S. Geological Survey

Jeffrey D. Chamberlin
 President/Broker, CCIM, SIOR
 772.220.4096 x101
 chamberlin@slccommercial.com

Jaime Chamberlin
 Associate
 772.486.3330
 jaime@slccommercial.com

SLC Commercial
 2488 SE Willoughby Blvd
 Stuart, FL 34994
 772.220.4096 | slccommercial.com



The information contained herein has been obtained from sources believed to be reliable, but no warranty or representation, expressed or implied, is made. All sizes and dimensions are approximate. Any prospective buyer should exercise prudence and verify independently all significant data and property information. This is NOT an offer of sub-agency or co-brokerage.

8981 SW Busch St

This presentation package has been prepared by the company representing the property for informational purposes only and does not purport to contain all information necessary to reach a purchase decision.

The information herein has been given by the Owner or other sources believed to be reliable, but it has not necessarily been independently verified by the Company representing the property and neither its accuracy nor its completeness is guaranteed.

This information is subject to errors, omissions, changes, prior sale or withdrawal without notice by the Company representing the property and does not constitute a recommendation, endorsement or advice as to the value for the purchase of any property. Each prospective lessee or purchaser is to rely upon his/her own investigation, evaluation and judgment as to the advisability of leasing or purchasing the property.

Furthermore, any financial information and calculations presented in this analysis are believed to be accurate, but are not guaranteed and are intended for the purposes of projection and analysis only. The user of this financial information contained herein should consult a tax specialist concerning his/her particular circumstances before making any investment.

Jeffrey D. Chamberlin
President/Broker, CCIM, SIOR
772.220.4096 x101
chamberlin@slccommercial.com

Jaime Chamberlin
Associate
772.486.3330
jaime@slccommercial.com

SLC Commercial
2488 SE Willoughby Blvd
Stuart, FL 34994
772.220.4096 | slccommercial.com

