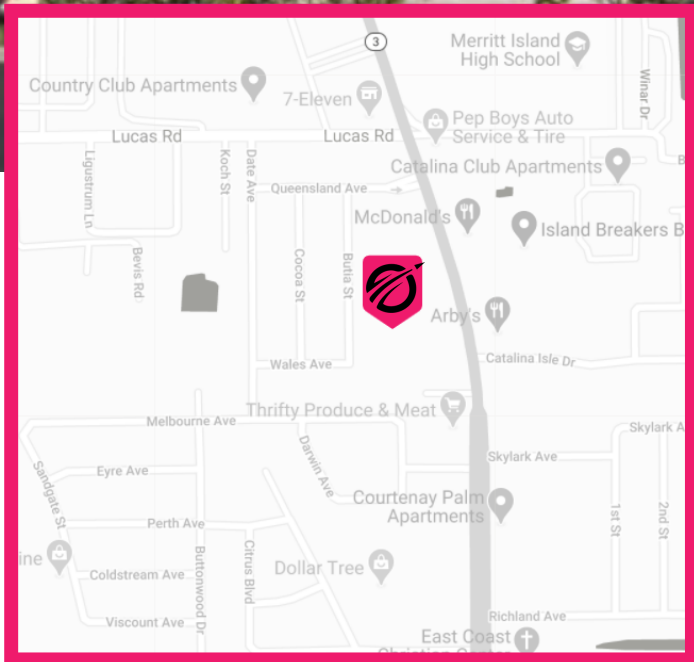
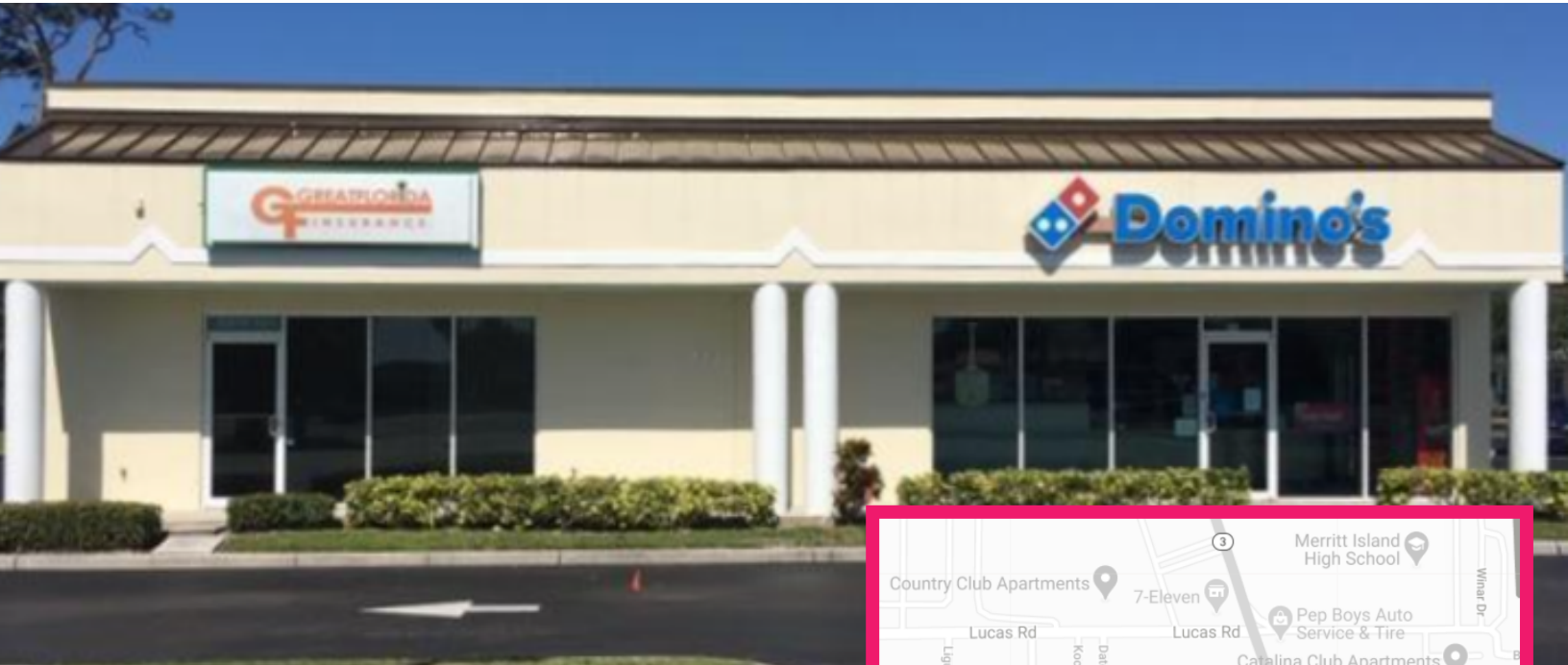


FOR LEASE | 923 N COURTENAY PKWY MERRITT ISLAND, FL 32953

DIRECT FRONTAGE + VISIBILITY

MLS #884252



- 600 SF Retail or Professional Office Space
- Four-way traffic signal | AADT: 35,000+
- Central to Cocoa Beach, Port Canaveral, + Kennedy Space Center
- Excellent Visibility with N Courtenay Pkwy direct frontage and a new 20ft Pylon Sign



ROCKET CITY

REAL ESTATE
REAL ESTATE ON A MISSION!



Holly Carver | Broker
321-243-8967

Lisa Earnhardt | Sales Associate
407-929-8009

FOR LEASE | 923 N COURTENAY PKWY MERRITT ISLAND, FL 32953

DIRECT FRONTAGE + VISIBILITY



ROCKET CITY

REAL ESTATE
REAL ESTATE ON A MISSION!



Holly Carver | Broker
321-243-8967

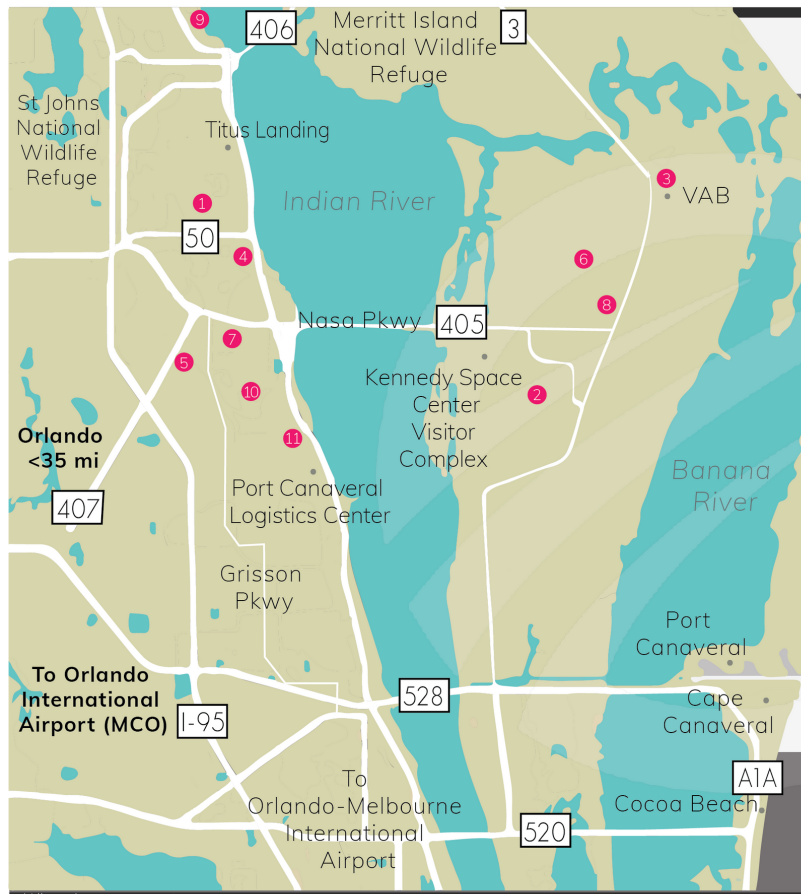
Lisa Earnhardt | Sales Associate
407-929-8009

FOR LEASE | 923 N COURTENAY PKWY MERRITT ISLAND, FL 32953



Space Coast Commerce | 2020

The Space Coast is **booming**.



Titusville | Jobs

1 Barnlight Electric	110
2 Blue Origin	250+
3 Boeing Co.	2,000+
4 Playalinda Brewery	80+
5 Embraer Aero Seating Technologies	150
6 Kennedy Space Center	8,000+
7 Knight's Enterprises, LLC	280+
8 Lockheed Martin	1000+
9 Parrish Medical Center	1,200+
10 Professional Aircraft Accessories	170
11 RUAG Space	20+
12 Space X	1000+

**15,000+
Space Coast
Jobs**

- AAR Airlift Group
- Airscan
- Arnett Air Suspension
- Arnett Air Systems
- Eckler's Industries
- Embraer Executive Jets
- L3Harris Technologies
- Mag Aero
- OneWeb Satellites
- Paragon Plastics
- Port Canaveral Logistics Center
- SeaDek Marine Products
- Vision Systems North America
- EMF, Inc
- Falcon Marine
- Florida Power & Light Company

Space Coast | More to Come

● Aerion Supersonic:	\$300M Investment
● Port Canaveral:	\$250M Investment
● Lockheed Martin:	\$40 M Investment
● Blue Origin:	\$20M Investment

TRADE AREA DEMOGRAPHICS

- Future job growth over the next ten years is predicted to be 42.2%,
- Average HH Income: \$84,533 | Median Home Price: \$295,800
- Island Population: 36,790 and growing!
- Local businesses bolstered by the Space Industry and Eco-tourism,
- Economic Development Opportunities
- A-rated Schools



Holly Carver | Broker
321-243-8967
Lisa Earnhardt | Sales Associate
407-929-8009