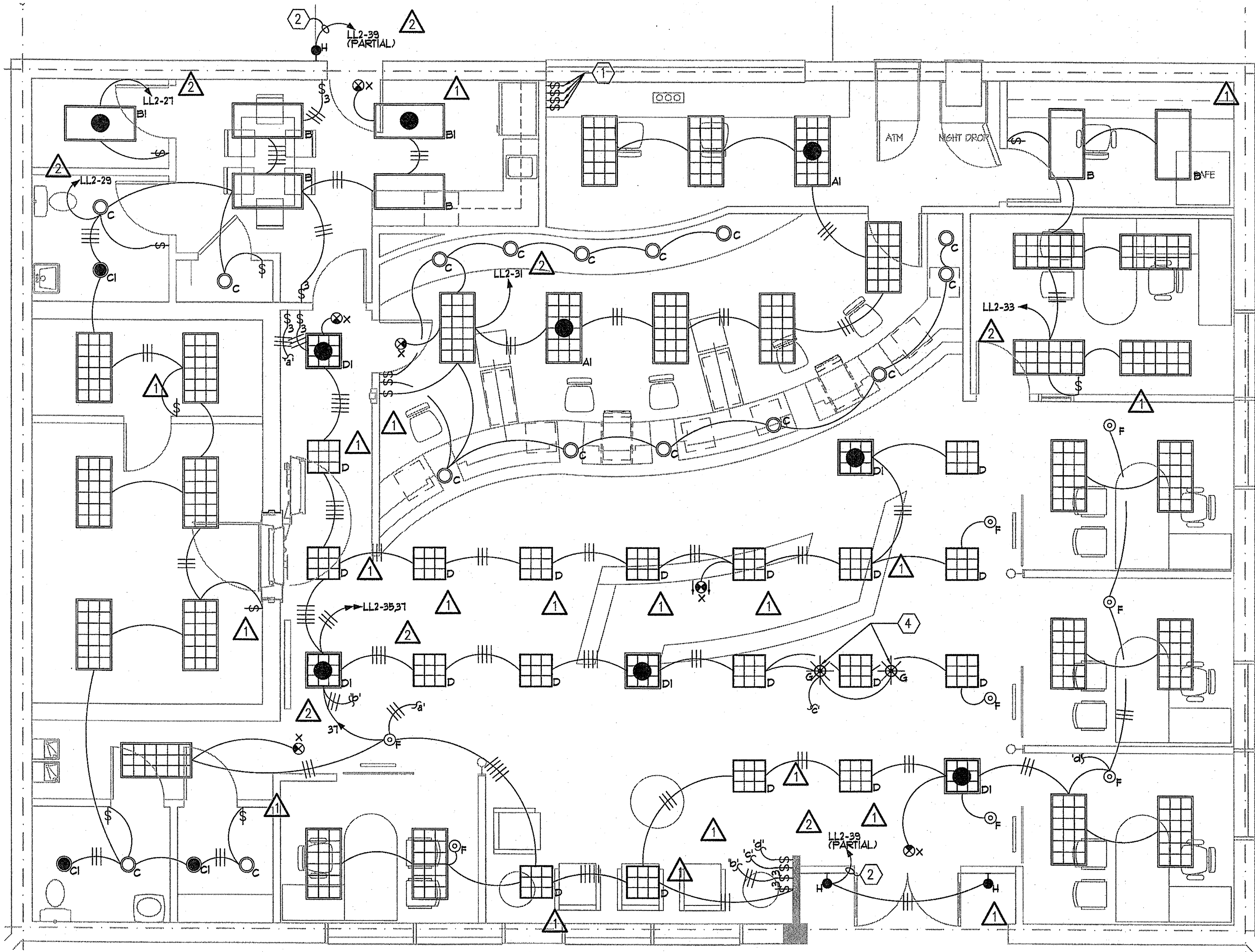


2 DRIVE THRU PLAN - LIGHTING
E2.1 1/4"=1'-0"



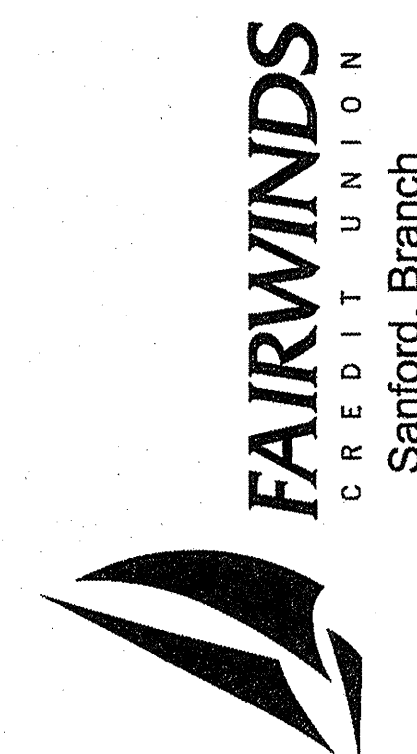
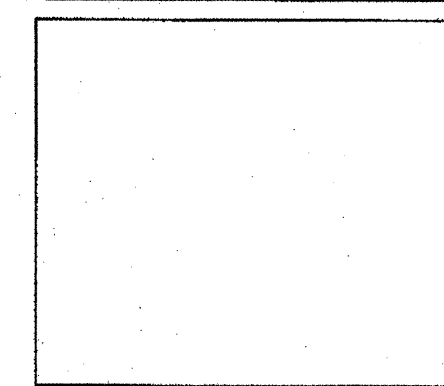
1 FLOOR PLAN - LIGHTING
E2.1 1/4"=1'-0"

GENERAL NOTES:
(APPLY TO THIS SHEET ONLY)

1. THE PURPOSE OF THESE PLANS IS TO SHOW SCHEMATIC INTENT. REFER TO ARCHITECTURAL PLANS FOR EXACT DIMENSIONED LOCATIONS OF ALL FIXTURES.
2. ALL LIGHT FIXTURES SHALL BE TYPE 'A' UNLESS NOTED OTHERWISE.
3. PROVIDE A CONTINUOUS, UNSWITCHED "HOT" TO ALL EMERGENCY LIGHTING FIXTURES AND EXIT SIGNS.
4. ALL LIGHT SWITCHES SHALL BE BEIGE WITH BRUSHED ALUMINUM COVERPLATES AND SHALL BE INSTALLED WITHIN AN ARMS LENGTHS DISTANCE FROM A DOOR OPENING.
5. ALL LIGHT FIXTURES LABELED AS 'EX' ARE EXISTING TO REMAIN AS IS UNLESS NOTED OTHERWISE.
6. ALL EXISTING SITE LIGHT FIXTURES SHALL BE RE-CONNECTED BACK TO NEW PANEL 'LL2' AS REQUIRED. ELECTRICAL CONTRACTOR SHALL PROVIDE ALL NECESSARY WIRING FOR A COMPLETE AND OPERABLE SYSTEM.

LEGEND NOTES:
(APPLY TO THIS SHEET ONLY)

- ① PROVIDE (4) THREE POSITION SWITCH TO CONTROL OPEN/CLOSED DRIVE THRU SIGNAGE. COORDINATE CONNECTION REQUIREMENTS WITH MANUFACTURER PRIOR TO INSTALLATION. THREE POSITION SWITCH SHALL ALLOW SIGN TO BE "OFF", "OPEN", OR "CLOSED". DRIVE UP ATM SIGNAGE NOT BE SWITCHED. PROVIDE A CONTINUOUS "HOT" TO ATM SIGNAGE.
- ② PROVIDE CONNECTION OF LIGHTING CIRCUIT THROUGH PHOTOCELL CONTROLLED CONTACTOR TO BE LOCATED ON THE ROOF.
- ③ PROVIDE CONNECTION OF EXISTING LIGHT FIXTURE(S) TO NEW PANEL 'LL2'. ALL EXISTING FEEDER CONDUIT AND CONDUCTORS SHALL BE EXTENDED/MODIFIED TO NEW PANEL 'LL2' AS REQUIRED. ELECTRICAL CONTRACTOR SHALL PROVIDE ALL NECESSARY WIRING FOR A COMPLETE AND OPERABLE SYSTEM.
- ④ COORDINATE EXACT LOCATION OF LIGHT FIXTURES WITH GREETER DESK. LIGHT FIXTURES SHALL BE PROVIDED WITH "PLUG IN PLAY" TYPE FEATURES.



Sanford, Branch

Issue:

Date	Rev.	Description
3/30/07		C.D. Presentation
5/25/07		Coordination Set
8/03/07		Electrical Revision Set
8/14/07		Site Light Clarification

KDA
Project: (BWA - 07004)
Number: 27-0001
Drawn By: DSW
Checked By: CMV
Scale: AS NOTED

FLOOR PLAN -
LIGHTING
E2.1