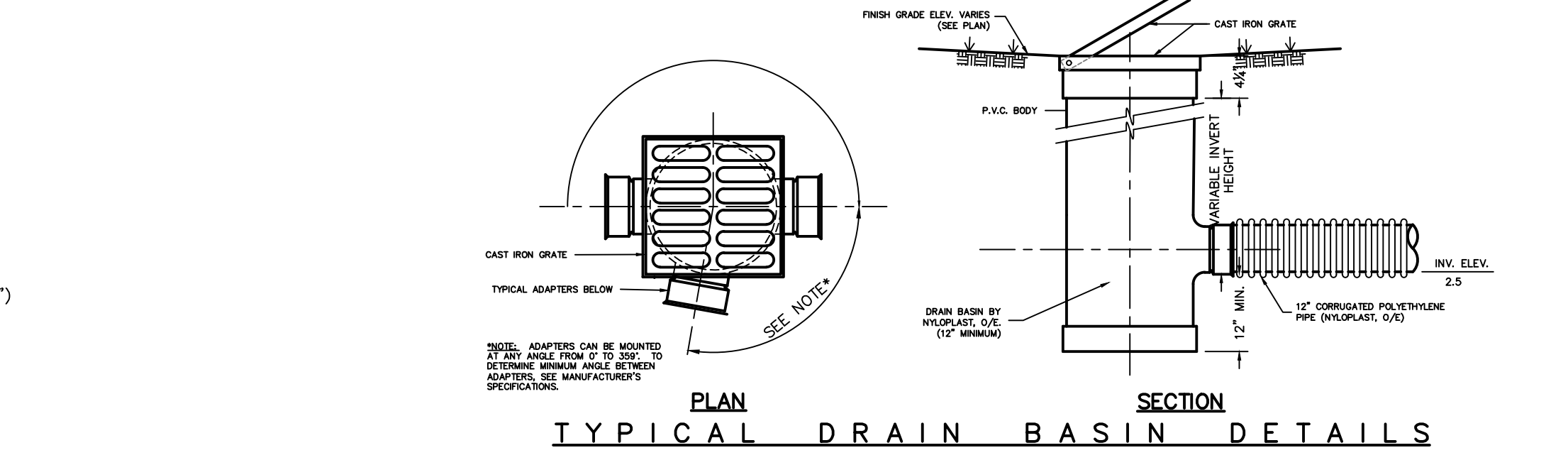
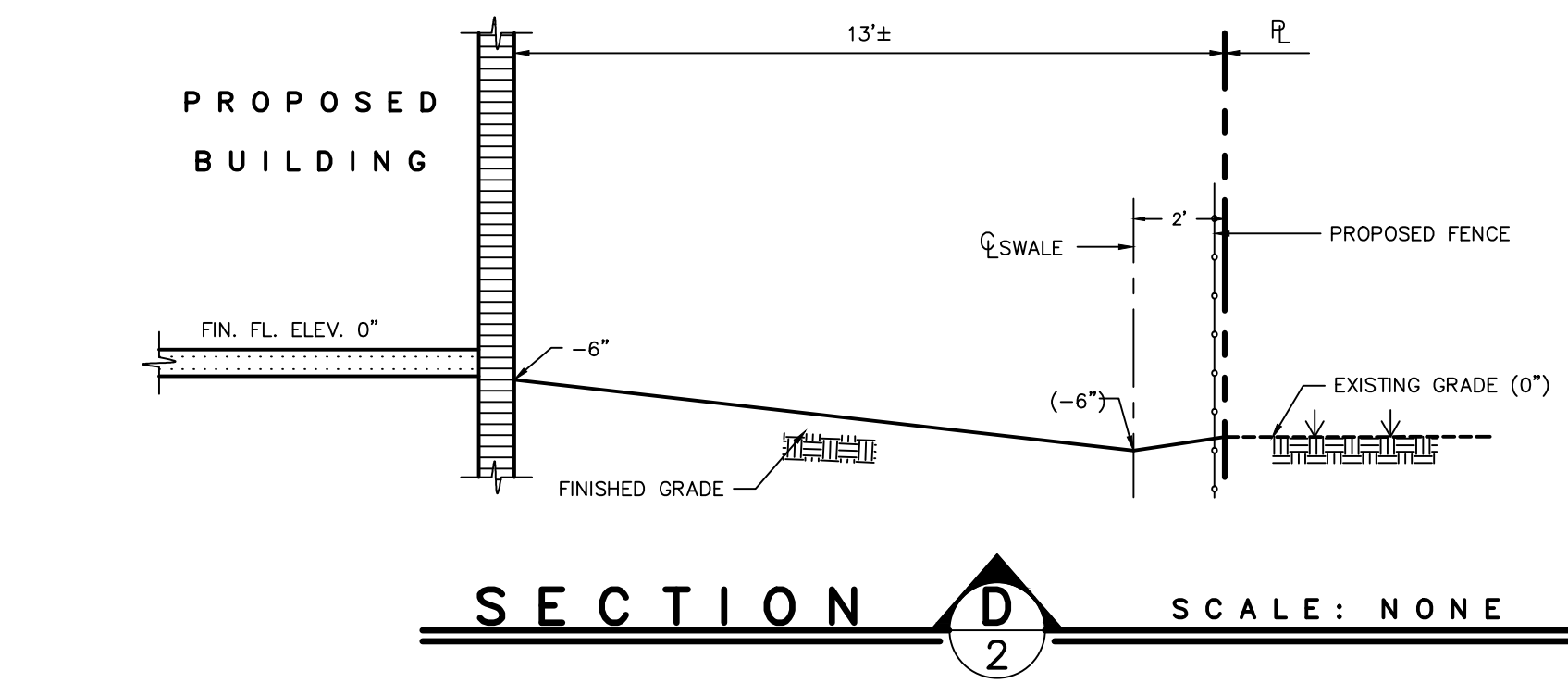
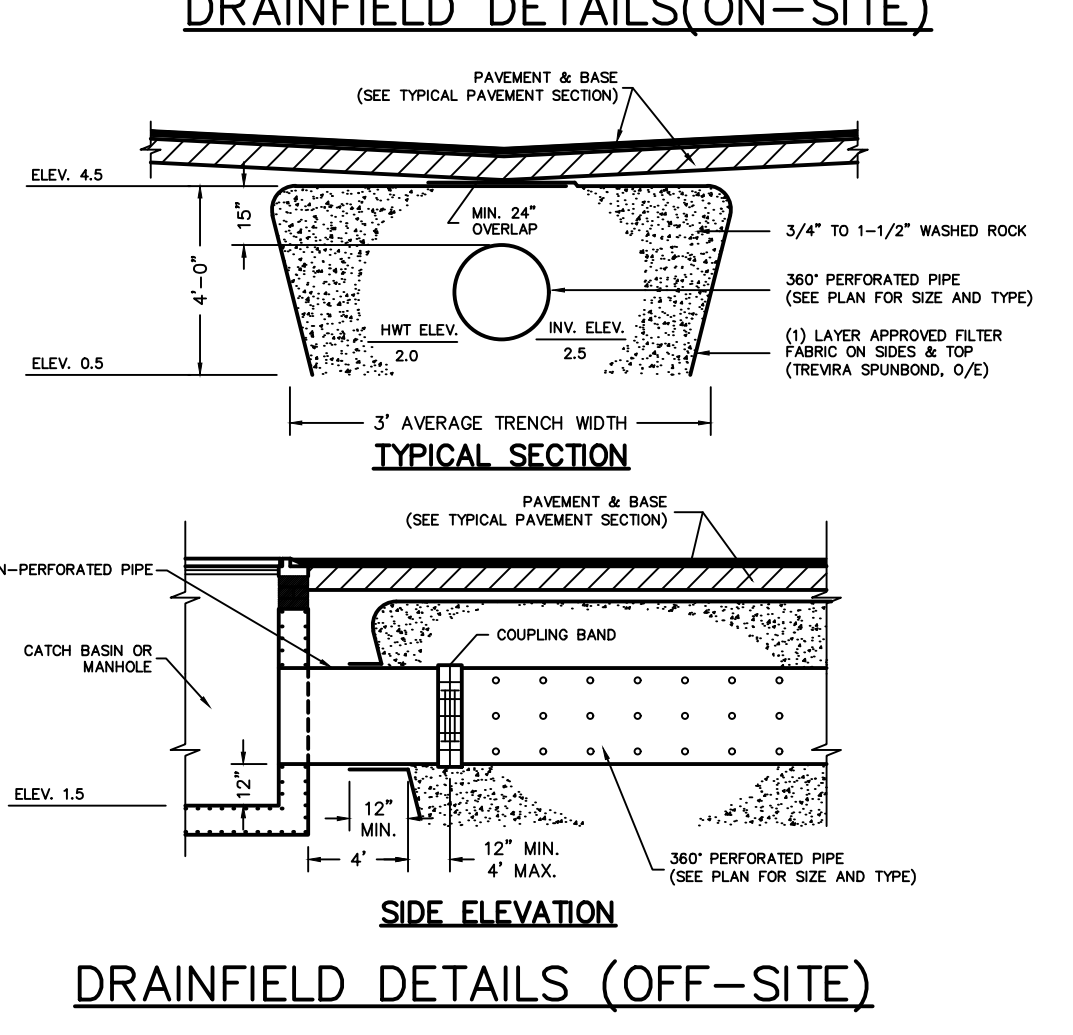
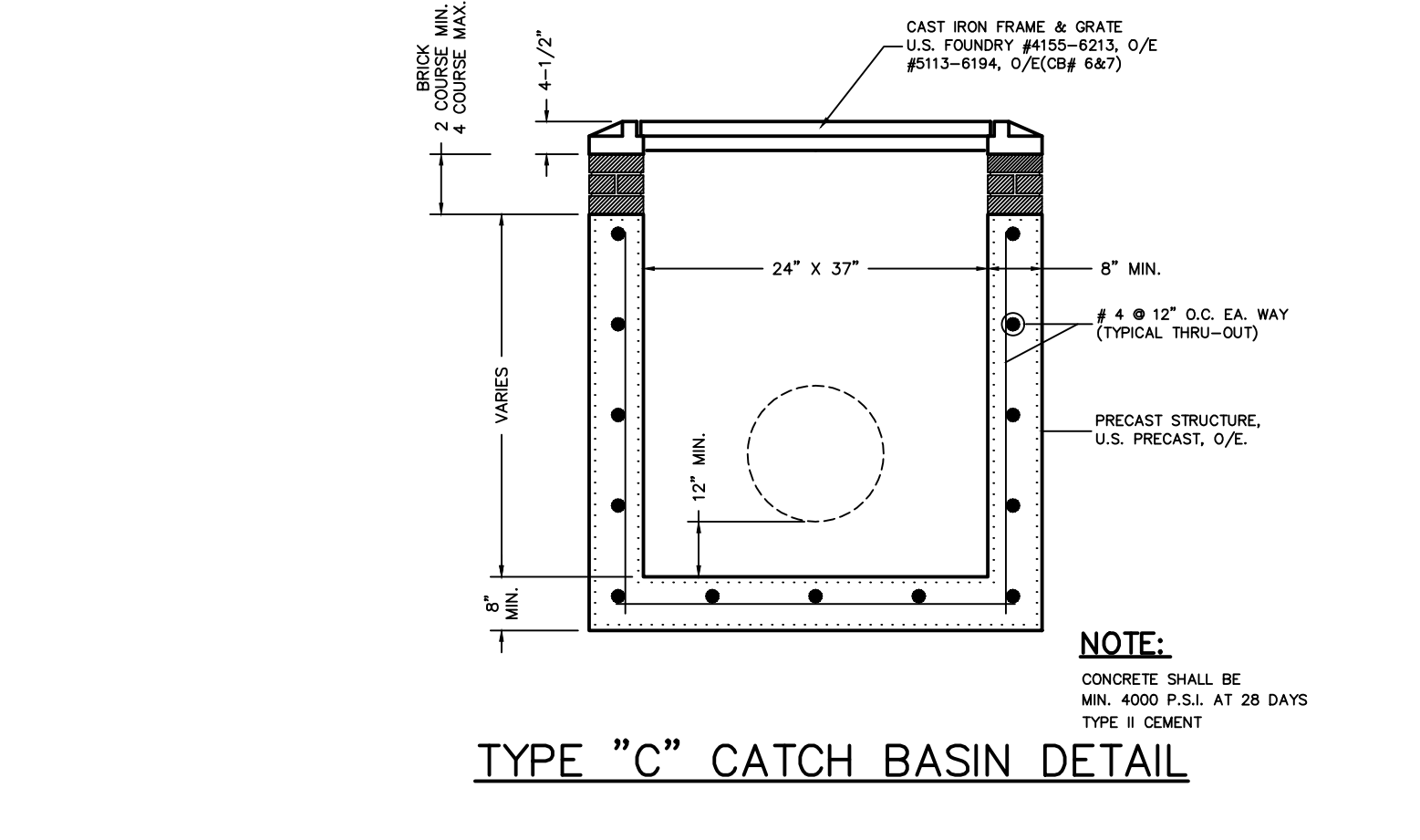
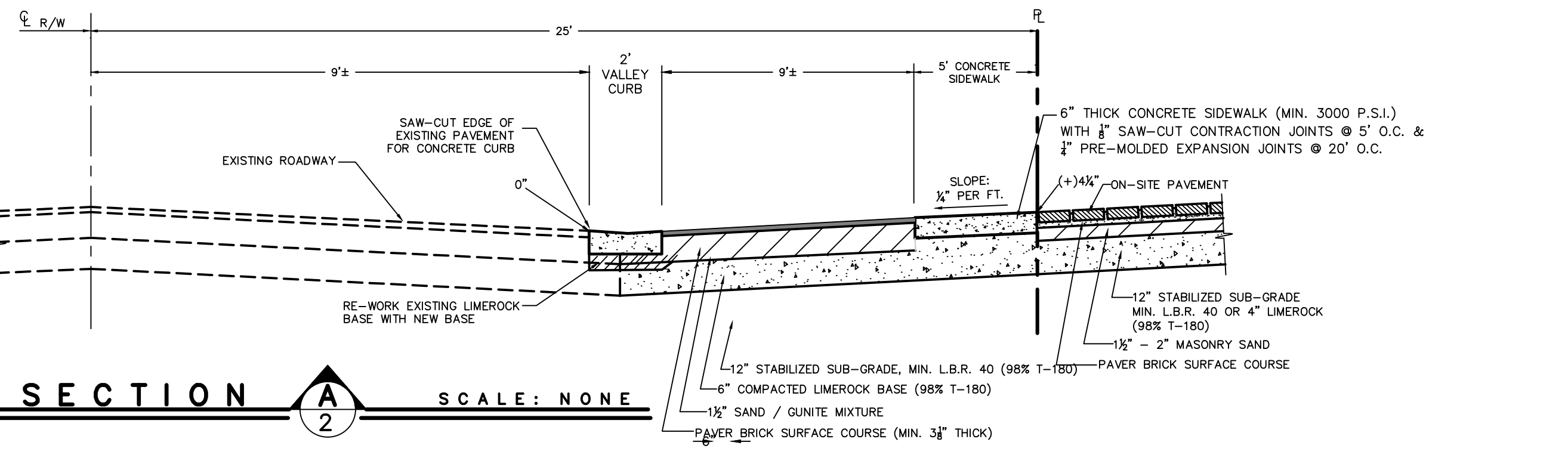
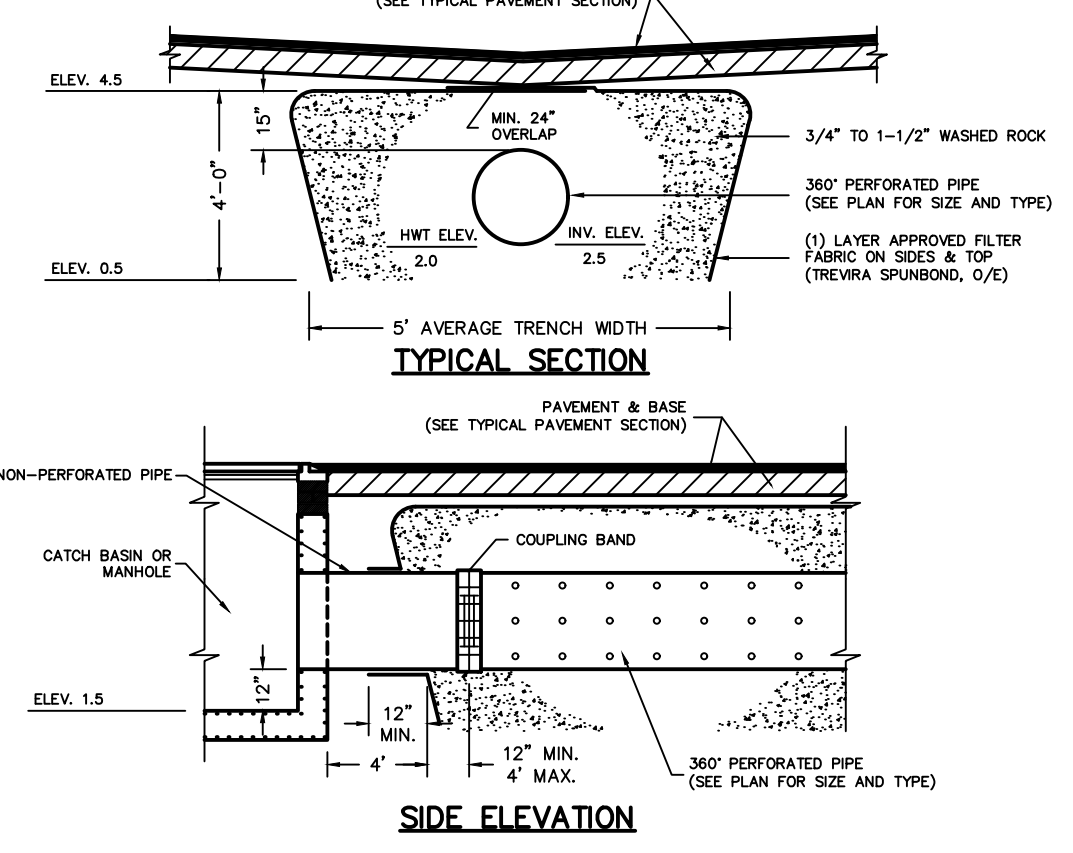
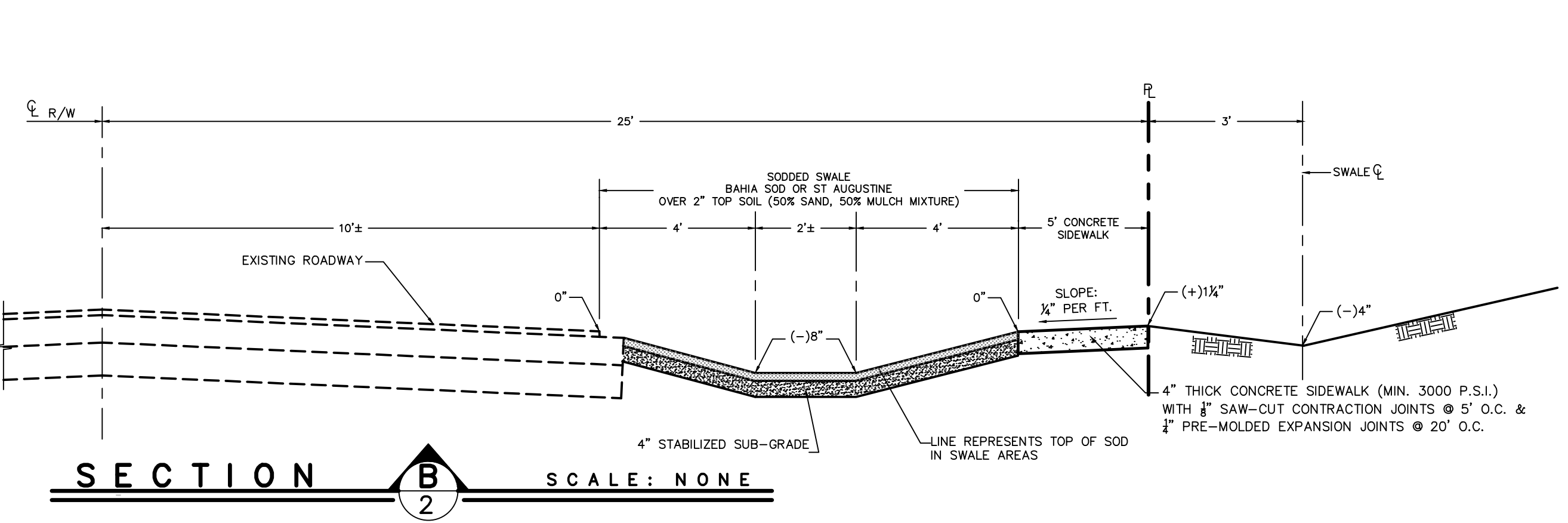
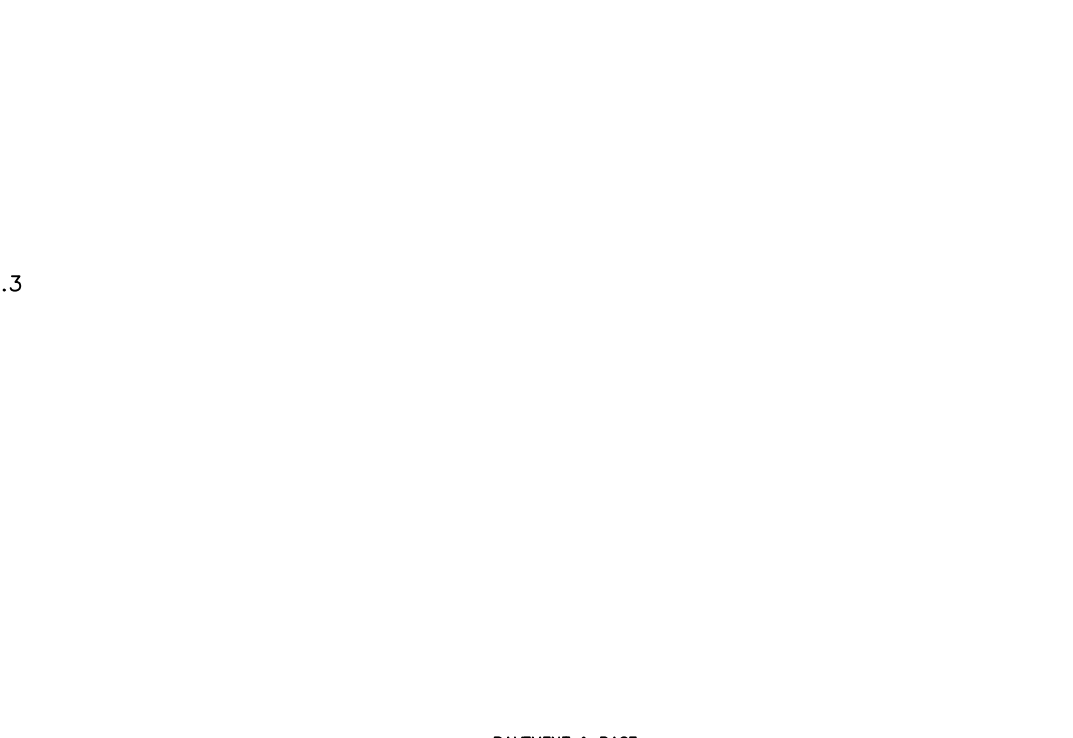
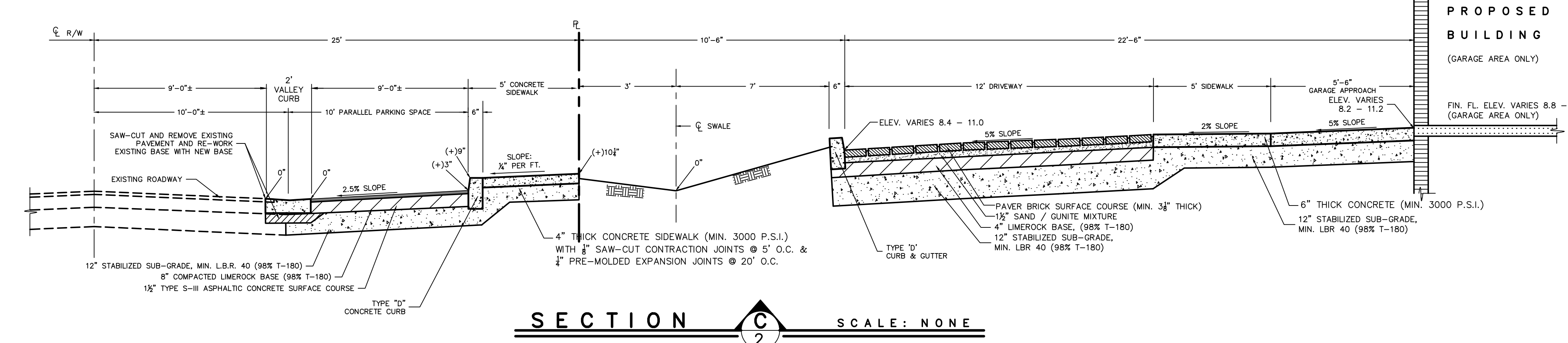


- NOTES:**
- GENERAL**
- 1- ALL CONSTRUCTION, MATERIALS AND INSPECTIONS SHALL COMPLY WITH CURRENT STANDARDS AND SPECIFICATIONS OF THE CITY OF POMPANO BEACH, BROWARD COUNTY ENGINEERING DIVISION'S "MINIMUM STANDARDS", AND FLORIDA DEPARTMENT OF TRANSPORTATION, WHERE APPLICABLE.
 - 2- LOCATION OF EXISTING UTILITIES ON THE PLANS ARE APPROXIMATE. THE CONTRACTOR SHALL LOCATE AND EXPOSE PRIOR TO CONSTRUCTION ALL EXISTING UTILITIES TO BE CONNECTED TO AND BRING TO THE ATTENTION OF THE ENGINEER ANY DEVIATIONS FROM THAT AS SHOWN ON THE PLANS.
 - 3- PRIOR TO CONSTRUCTION THE CONTRACTOR SHALL HOLD A PRECONSTRUCTION MEETING TO INCLUDE THE ENGINEER OF RECORD, CITY, AND ANY OTHER UTILITIES AND/OR AGENCIES INVOLVED.
 - 4- ALL ELEVATIONS ARE BASED ON NORTH AMERICAN VERTICAL DATUM OF 1988.
 - 5- ALL UTILITIES AND DRAINAGE INSTALLATIONS UNDER PROPOSED PAVEMENT SHALL BE COMPLETED PRIOR TO COMMENCING PAVEMENT SUB-GRADE CONSTRUCTION. THE CONTRACTOR IS REQUIRED TO HAVE INSPECTIONS MADE ON EACH OF THE FOLLOWING ITEMS BY THE ENGINEER AND CITY:
 - A) UTILITIES AND DRAINAGE
 - B) SUB-GRADE
 - C) ROCK BASE
 - D) PRIME COAT
 - E) ASPHALT
 - F) FINAL
 - 7- SHOP DRAWINGS OF ALL MATERIALS TO BE USED SHALL BE SUBMITTED TO THE ENGINEER FOR APPROVAL. APPROVAL FROM ALL APPROPRIATE AGENCIES SHALL BE OBTAINED PRIOR TO INSTALLATION.
 - 8- CONTRACTOR SHALL MAINTAIN A CURRENT SET OF CONSTRUCTION PLANS ON THE JOB SITE AT ALL TIMES.
- PAVING**
- 1- REMOVE MUCK, OVERBURDEN AND ROOT MATERIAL WITHIN 10 FEET OF ANY EDGE OF PAVEMENT OR BUILDING. BACKFILL TO REQUIRED SUB-GRADE WITH CLEAN, GRANULAR MATERIAL IN MAXIMUM 12 INCH LIFTS, COMPACTED TO 98% MAXIMUM DENSITY AS DETERMINED BY AASHTO-T-180.
 - 2- STABILIZED SUB-GRADE (MINIMUM L.B.R. 40) SHALL BE COMPACTED TO 98% MAXIMUM DENSITY AS DETERMINED BY AASHTO-T-180.
 - 3- LIMEROCK BASE SHALL MEET FLORIDA D.O.T. STANDARD SPECIFICATIONS, SECTION 911, AND INSTALLED PER SECTION 200. DENSITY TESTS SHALL BE TAKEN AT A MINIMUM OF EVERY 5,000 S.F. FOR EACH LIFT WITH COPIES TO THE ENGINEER FOR APPROVAL. LIMEROCK BASE TO BE PRIMED IN ACCORDANCE WITH SECTION 300. BASE SHALL HAVE A COMPACTED THICKNESS AS SPECIFIED ON THE PLAN BUT IN NO CASE LESS THAN 6 INCHES.
 - 4- ASPHALTIC CONCRETE SURFACE COURSE SHALL BE TYPE S-III CONFORMING TO SECTION 311, FLORIDA D.O.T. STANDARD SPECIFICATIONS. THE MINIMUM COMPACTED THICKNESS TO BE AS NOTED ON PLANS.
 - 5- FINISHED ROOK "AS-BUILT" GRADES BY A REGISTERED SURVEYOR SHALL BE SUBMITTED TO THE ENGINEER AND CITY FOR APPROVAL PRIOR TO PLACING ASPHALT. PAVEMENT MARKINGS SHALL BE THERMOPLASTIC (T.P.) IN ACCORDANCE WITH FLORIDA D.O.T. SPECIFICATION SECTION 711. REFLECTIVE PAVEMENT MARKERS (R.P.M.) SHALL BE INSTALLED IN ACCORDANCE WITH THE "MANUAL OF UNIFORM MINIMUM STANDARDS FOR DESIGN CONSTRUCTION AND MAINTENANCE FOR STREETS AND HIGHWAYS" AND BROWARD COUNTY TRAFFIC ENGINEERING STANDARDS. ALL TRAFFIC SIGNS SHALL BE HIGH INTENSITY REFLECTIVE MATERIAL.
- DRAINAGE**
- 1- DRAINAGE PIPE SHALL BE ONE OF THE FOLLOWING:
 - A) CORRUGATED POLYETHYLENE PIPE (P.E.) FABRICATED TO ASTM 405 AND AASHTO-M294. PIPE SHALL BE ADS N-12, OR APPROVED EQUAL.
 - B) HELICAL CORRUGATED ALUMINUM (C.A.P.) FABRICATED TO ASTM B209 AND AASHTO-196. PIPE SHALL HAVE 2-2/3" X 1/2" CORRUGATIONS AND SHALL HAVE A MINIMUM THICKNESS OF:
 - 1) 24" AND SMALLER - 16 GAUGE
 - 2) OVER 24" - 14 GAUGE
 - C) REINFORCED CONCRETE PIPE (R.C.P.) SHALL BE CLASS III AND MEET THE REQUIREMENTS OF ASTM C-76. THE PIPE JOINT SHALL BE OF THE BELL-AND-SPOUT TYPE.
 - 2- PRECAST DRAINAGE MANHOLES AND CATCH BASINS SHALL MEET THE REQUIREMENTS OF ASTM C-478 WITH A CONCRETE MINIMUM COMPRESSIVE STRENGTH OF 4000 P.S.I. AT 28 DAYS. SHOP DRAWINGS SHALL BE SUBMITTED FOR APPROVAL PRIOR TO MANUFACTURE.
 - 3- ALL CONCRETE USED SHALL DEVELOP A MINIMUM OF 3000 P.S.I. COMPRESSIVE STRENGTH AT 28 DAYS.
 - 4- CONTRACTOR SHALL PROVIDE THE ENGINEER "AS-BUILTS" OF THE PROJECT GIVING ALL HORIZONTAL DIMENSIONS AND VERTICAL INFORMATION BY A REGISTERED



- DRAINAGE DISCHARGE WELL.**
1. DEPTH OF WELL SHALL BE DETERMINED BY WATER QUALITY AT THE DISCHARGE LEVEL. WATER QUALITY SHALL BE MIN. OF 3,000 P.P.M. CHLORIDE AND 10,000 P.P.M. TDS. APPROX. DEPTH 80-100 FEET. WELL CONTRACTOR SHALL SUBMIT WATER QUALITY ANALYSIS CERTIFYING THAT MINIMUM WATER QUALITY PARAMETERS ARE MET.
 2. LENGTH OF UNCASED PORTION OF WELL SHALL BE SUFFICIENT TO ALLOW FOR A DISCHARGE FLOW OF A MINIMUM OF 200 G.P.M./FT-HEAD BASED ON A STARTING ELEVATION OF 4.0. WELL CONTRACTOR TO SUPPLY TESTING AND CERTIFICATION AS TO WELL'S CAPACITY.
 3. WELL CASING SHALL BE STANDARD WEIGHT BLACK STEEL (ASTM) A53/A53M-99B, A 135-01, A252-98, A589-96
 4. WELL CONTRACTOR SHALL COMPLY WITH ALL LOCAL AND STATE REGULATIONS IN THE CONSTRUCTION OF THE CLASS V WELL.
 5. DRAINAGE WELL CAPACITY TEST SHALL BE WITNESSED BY THE CITY AND THE ENGINEER AND A CERTIFIED COPY SHALL BE SUPPLIED TO THE ENGINEER OF RECORD.



PAVING AND DRAINAGE DETAILS

GUSTAVO J. CARBONNEL ARCHITECT
FORT LAUDERDALE, FLORIDA

OCEAN AZUL TOWNHOMES

JOHN B. SMITH ENGINEERS, INC.
250 S.W. 6th PLACE
POMPANO BEACH, FLORIDA 33060
PHONE: (954) 783-4177
CERTIFICATE OF AUTHORIZATION NO. 1688

DESIGN R.C.S.	DRAWN RCS	DATE AUG., 2018	FILE 18-147
SHEET			C20F 3

Approved By:
Robert C. Smith, P.E.
Registered Engineer No. 31177

State of Florida