



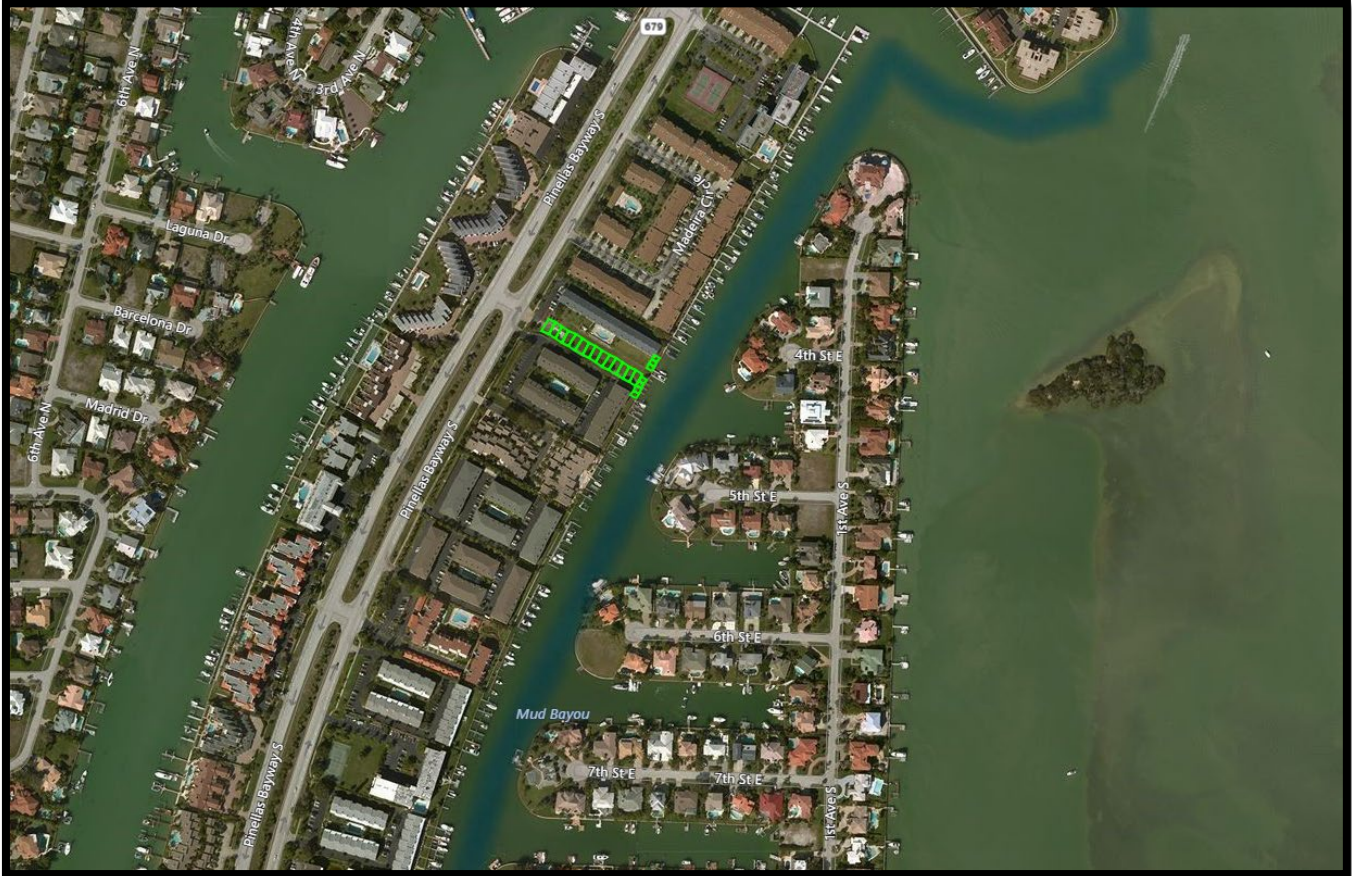
**BERKSHIRE  
HATHAWAY**  
HomeServices

Florida Properties Group

COMMERCIAL DIVISION

# 14 Unit Platted Waterfront Multifamily Development Site

## For Sale

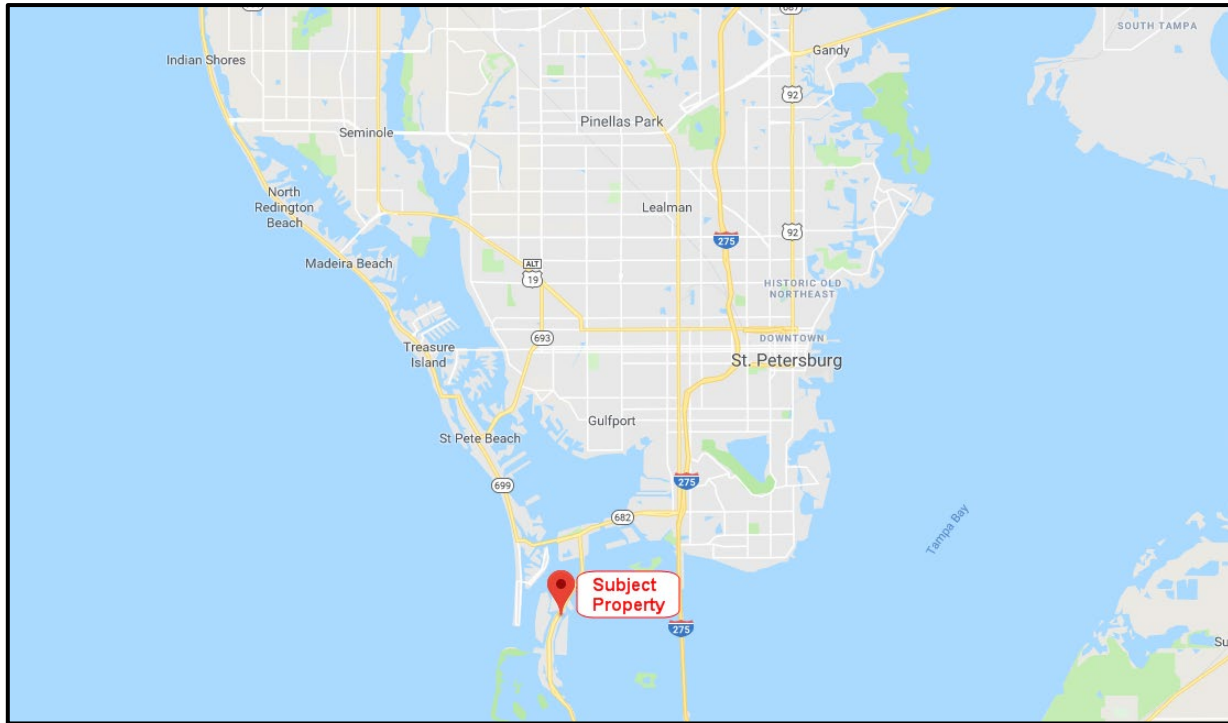


**201 Pinellas Bayway S., Tierra Verde, Florida 33715**

## Property Information

- **Seller Will Consider All Written Offers**
- **100± Feet of Waterfront**
- **Platted for 14 Townhome Units & 4 Dock Slips**
- **Platted Lots 25' x 44'**
- **Zoned Multifamily and Flood Zone: AE**
- **Shared Cross Easement for Pool and Deck Amenities**
- **Close to TIA, Shopping, Restaurants & Sporting Events**
- **Engineering Plans Available for Condo Development**
- **Starting at 2,500± SF; 3 Bed/3 Bath/Garage Parking**
- **Development Opportunity Listed for \$999,000**

This information is from sources deemed to be reliable. We are not responsible for misstatements of facts, errors or omissions, prior sale, change of price, and/or terms or withdrawal from the market without notice. Buyer should verify all information with its' own representatives as well as state and local agencies. Brokers please note that a variable rate commission may exist on this offering that might result in a lower commission cost to the Seller if a Buyer's broker is not involved in the transaction. ©2020 BHH Affiliates, LLC. An independently owned and operated franchisee of BHH Affiliates, LLC. Berkshire Hathaway HomeServices and the Berkshire Hathaway HomeServices symbol are registered service marks of Columbia Insurance Company, a Berkshire Hathaway affiliate. Equal Housing Opportunity.



DEMOGRAPHICS BY MILE			
	1 MILE	3 MILES	5 MILES
Total Population	4,233	14,409	60,983
Avg. HH Income	\$145,806	\$118,924	\$81,858
Median Age	57.7	60.4	53.09
Total Households	2,043	6,949	29,072

DEMOGRAPHICS BY DRIVE TIME			
	5 MINS	10 MINS	15 MINS
Total Population	5,475	23,889	122,587
Avg. HH Income	\$137,031	\$105,319	\$72,784
Median Age	64.5	53.6	45.7
Total Households	2,888	11,046	53,827

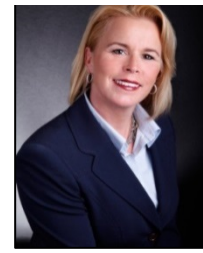
## Tampa Bay Land Team...



**D. Dewey Mitchell, CCIM**  
**Broker Owner**  
727-569-2332  
industrial@bhhsflpg.com



**Renee' D. Dyer, CCIM, ALC**  
**Executive Associate**  
727-460-4901  
rdyer@bhhsflpg.com



**Jill Carbonelli, CCIM**  
**Sr. Broker Associate**  
727-639-5713  
jcarbonelli@bhhsflpg.com



*Dyer/Carbonelli Team*  
*Awarded #1 Producing Commercial Team in the Network 2018*  
*Awarded #2 Producing Commercial Team in the Network 2019*



@CREBossLadies