



LIGHTLE  
BECKNER  
ROBISON

INCORPORATED

COMMERCIAL REAL ESTATE SERVICES

---

COMMERCIAL LAND FOR SALE

---

# General Commercial Palm Shores Vacant Land

Roberts Road Melbourne, FL 32935

+/-5.02 ACRES FOR SALE | \$700,000

presented by:

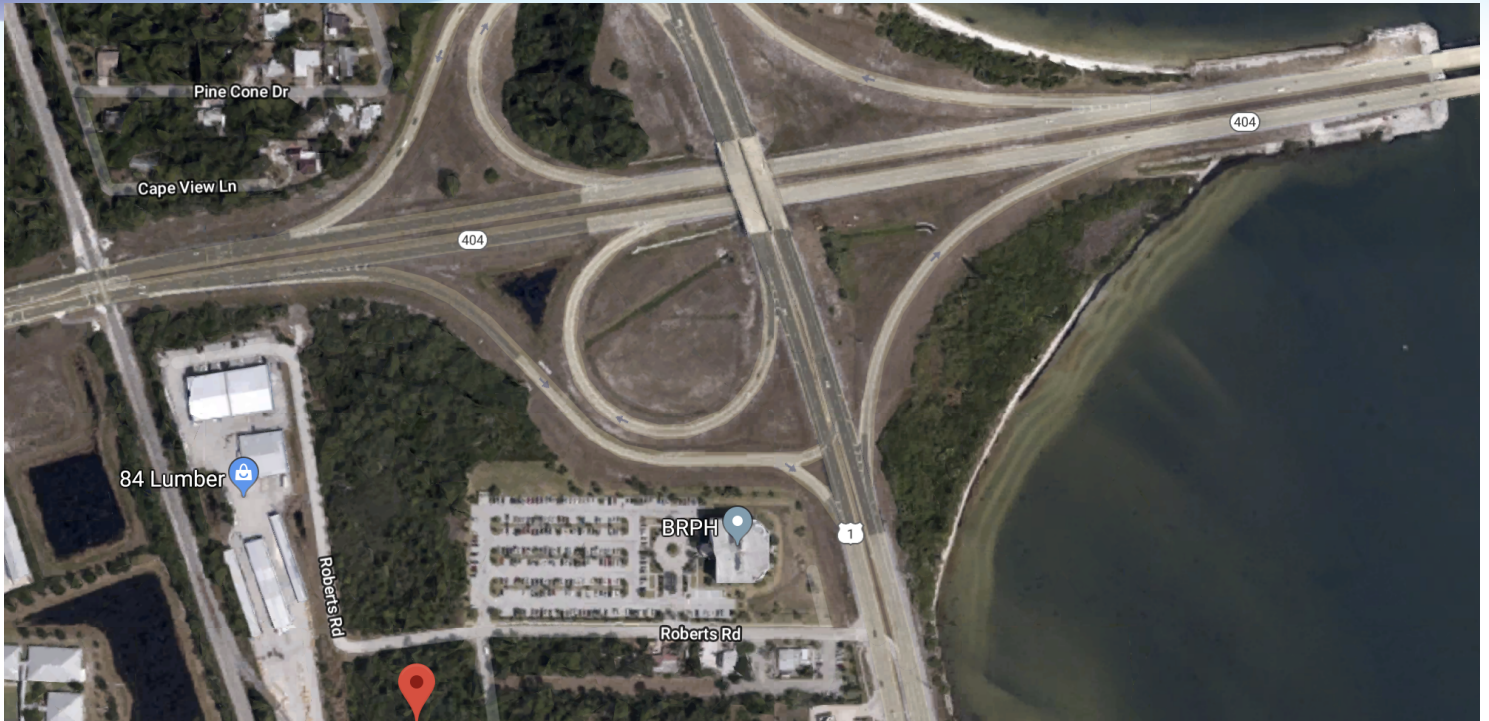
**BRIAN L. LIGHTLE, CCIM, SIOR**

President | Broker

321.722.0707 X14

brian@teamlbr.com

Pineda Causeway and US Highway I / General Commercial Land For Sale • Roberts Road Melbourne, FL 32935



**OFFERING SUMMARY**

<b>Sale Price:</b>	\$700,000
<b>Price / Acre:</b>	\$134,615
<b>Lot Size:</b>	5.2 Acres
<b>Zoning:</b>	C 2
<b>Market:</b>	Melbourne
<b>Submarket:</b>	Central Brevard

**PROPERTY OVERVIEW**

Parcels Included Equal +/- 5.02 Acres

Development Opportunity

Located in the City of Palm Shores, in the Southwest Quadrant of the Pineda Causeway and US 1

Property is Located in a High Growth Area of Brevard County

Situated Behind the BRPH Building on US 1 and Pineda Causeway

**LOCATION OVERVIEW**

Parcels are on Roberts Road , Off of US Highway 1 in Palm Shores

**BRIAN L. LIGHTLE, CCIM, SIOR**

President | Broker  
321.722.0707 X14  
brian@teamlbr.com

**Lightle Beckner Robison**

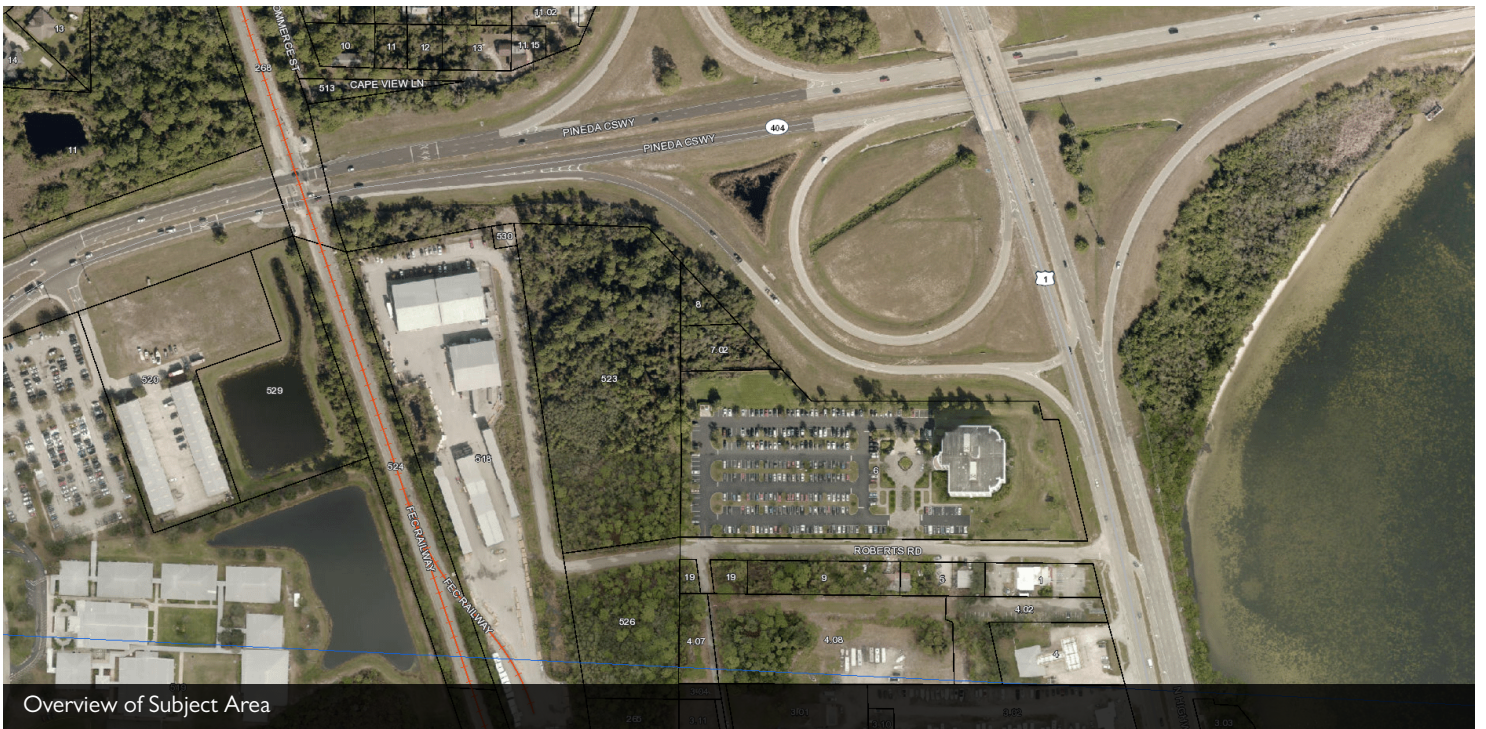
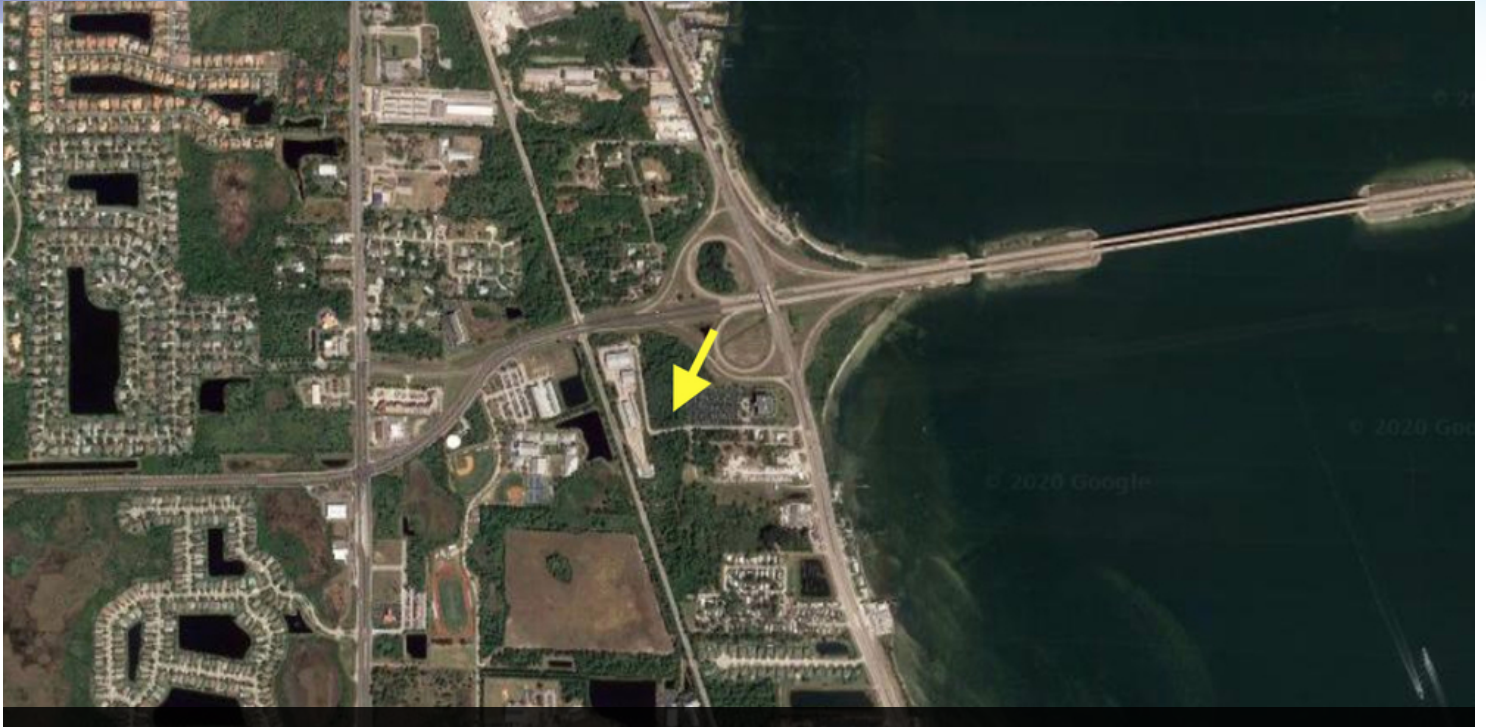
321.722.0707 • teamlbr.com  
70 W. Hibiscus Blvd.,  
Melbourne, FL 32901

Information contained herein has been obtained through sources deemed reliable but cannot be guaranteed as to its accuracy. A purchaser or lessee is expected to verify all information to his/her own satisfaction. Zoning information subject to change and not warranted. Always confirm current requirements with local governing agencies.



# 5.02 ACRES / \$700,000

Pineda Causeway and US Highway 1 / General Commercial Land For Sale • Roberts Road Melbourne, FL 32935



Overview of Subject Area

**BRIAN L. LIGHTLE, CCIM, SIOR**

President | Broker  
321.722.0707 X14  
brian@teamlbr.com

**Lightle Beckner Robison**

321.722.0707 • teamlbr.com  
70 W. Hibiscus Blvd.,  
Melbourne, FL 32901

Information contained herein has been obtained through sources deemed reliable but cannot be guaranteed as to its accuracy. A purchaser or lessee is expected to verify all information to his/her own satisfaction. Zoning information subject to change and not warranted. Always confirm current requirements with local governing agencies.

# Brevard County Property Appraiser

