

- Industrial
- Commercial
- Office
- Land
- Business

FOR SALE

PROFESSIONAL OFFICE CONDO 1,250 SF

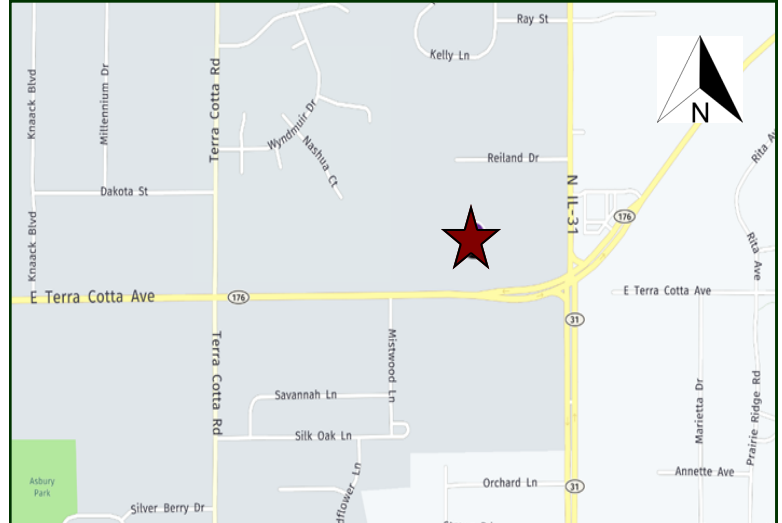
1,250 SF (25' x 50') single level masonry office condo with 5 privates, business office, 1 bath, coffee room, reception/waiting room. Currently a counseling office and owners need more space. Nice finishes. Association dues are \$250/mo. See floor plan. Showings when there are no clients. Visit Premier Commercial Realty website to see all our listings.



PROPERTY SPECIFICATIONS

| | |
|-------------------|-----------------------------|
| Description | Office Condo |
| Condo Size: | 1,250 SF |
| Year Built: | 2000 |
| HVAC System: | Gas forced air/Central air |
| Electric: | 100 amp |
| Alarm Monitored: | Yes |
| Washrooms: | 1 Handicapped |
| Floors: | Carpet/Tile |
| Ceiling Height: | 9' |
| Possession: | Negotiable |
| Parking: | Common |
| Sewer: City | Water: City |
| Zoning: | O (office) |
| Taxes: | \$4,501.94 (2019) |
| Association Dues: | \$250/mo. |
| Sale Price: | \$143,500 (\$114.80 psf) |

MLS: **10800221**



DIRECTIONS: Highway 31 to Highway 176 (Terra Cotta) west to 820 East Office Park on north side of street. Center section, right (East) side.

August 10, 2020

PIN: 14-34-178-043 & 044

No warranty or representation is made as to the accuracy of the foregoing information. Terms of sale or lease and availability are subject to change or withdrawal without notice. This document is for information purposes only. No offer of sub-agency is being made.

[CLICK HERE
TO VISIT OUR WEBSITE](#)

www.PremierCommercialRealty.com

9225 S. IL Route 31
Lake in the Hills, IL 60156
Office: 847-854-2300
Fax: 847-854-2380

Bruce Kaplan – Senior Broker
Office: 847-854-2300 Ext. 20
Cell: 847-507-1759
BruceK@PremierCommercialRealty.com

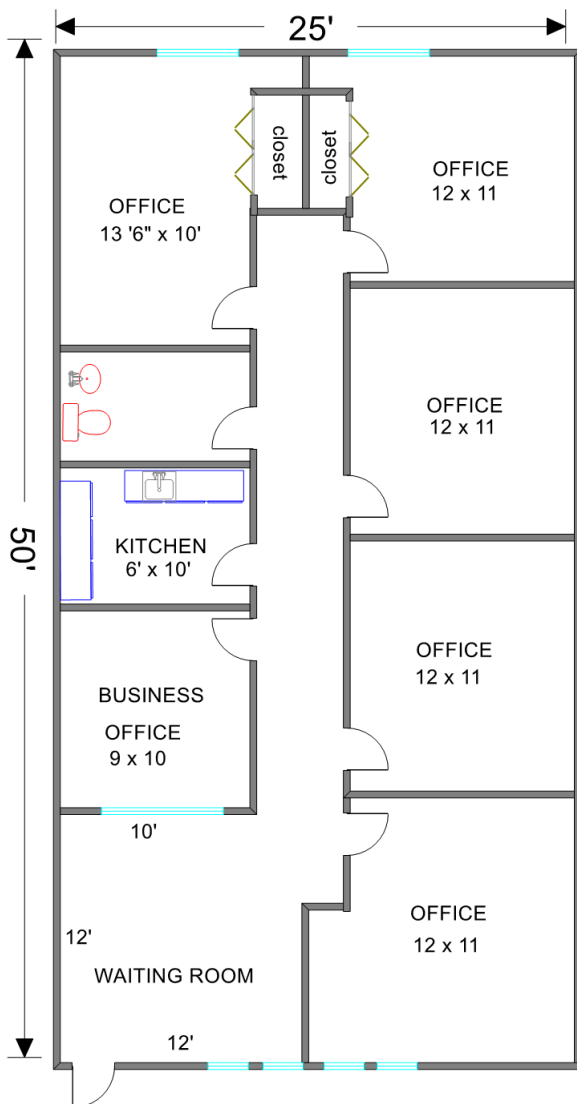
Kevin Kaplan – Broker Associate
Office: 847-854-2300 Ext. 13
Cell: 309-261-0920
KevinK@PremierCommercialRealty.com

- Industrial
- Commercial
- Office
- Land
- Business

820 E. Terra Cotta
Unit 144
Crystal Lake, IL 60014



UNIT 144



Measurements Approximate

