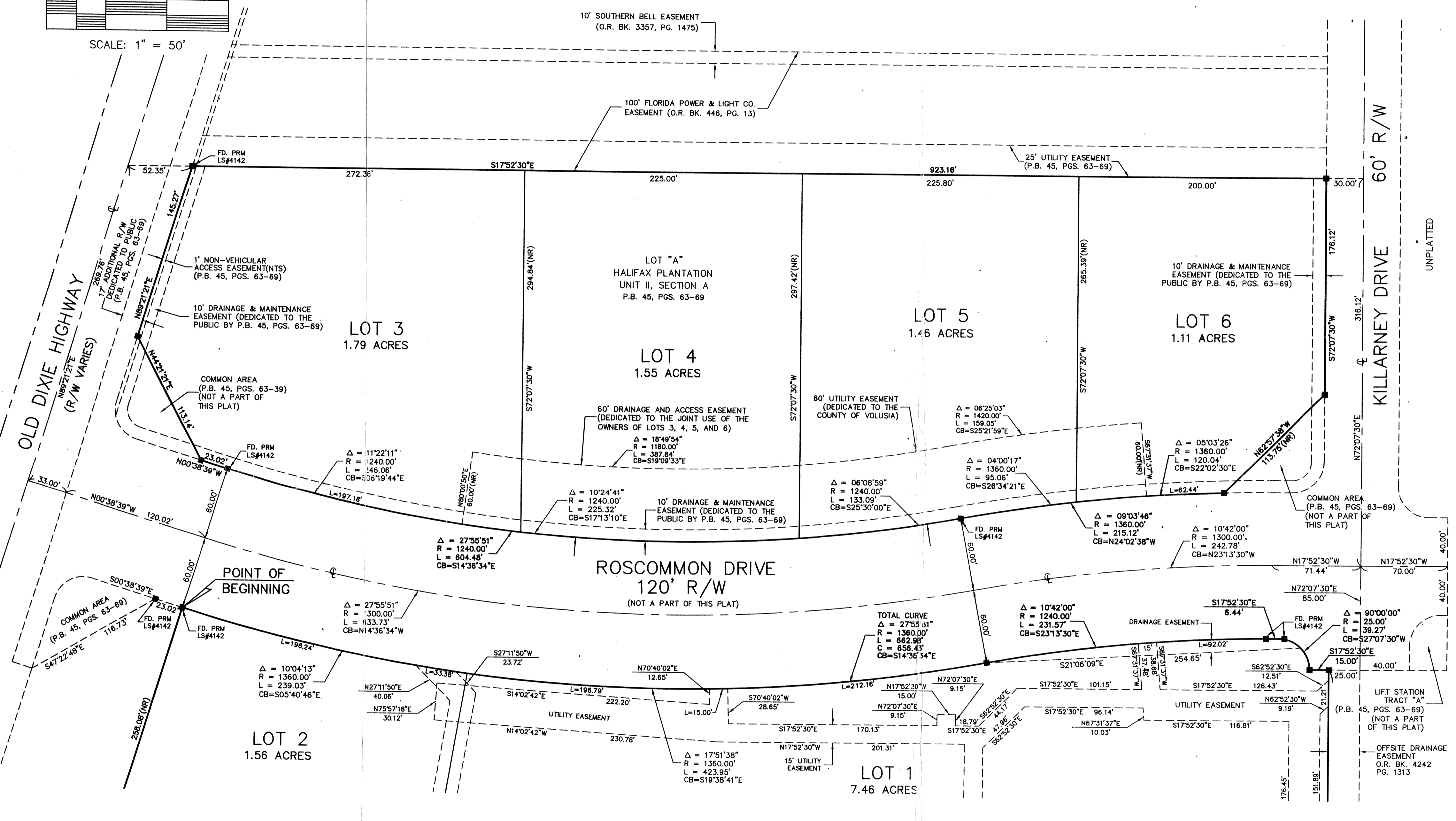
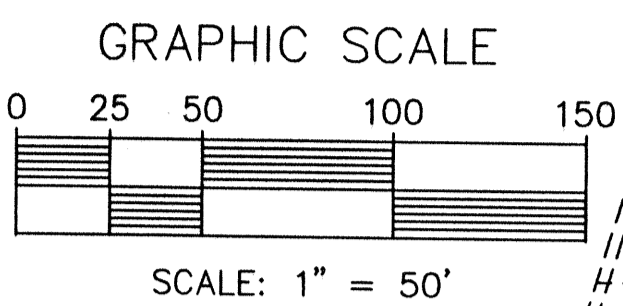


# HALIFAX PLANTATION VILLAGE

PLAT BOOK 46  
PAGE 143

A PORTION OF SECTION 2, TOWNSHIP 13 SOUTH, RANGE 31 EAST, VOLUSIA COUNTY, FLORIDA, AND A REPLAT OF LOT "A", HALIFAX PLANTATION, UNIT II, SECTION "A", AS RECORDED IN MAP BOOK 45, PAGES 63-68, PUBLIC RECORDS OF VOLUSIA COUNTY, FLORIDA.



SEE SHEET 2 OF 3

PREPARED BY:  
MARK DOWST & ASSOCIATES, INC.  
428 N. PENINSULA DRIVE,  
DAYTONA BEACH, FL. 32118