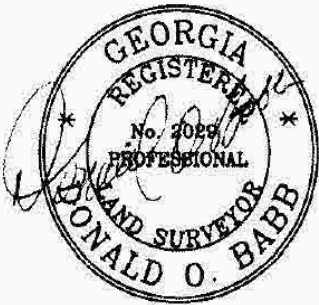
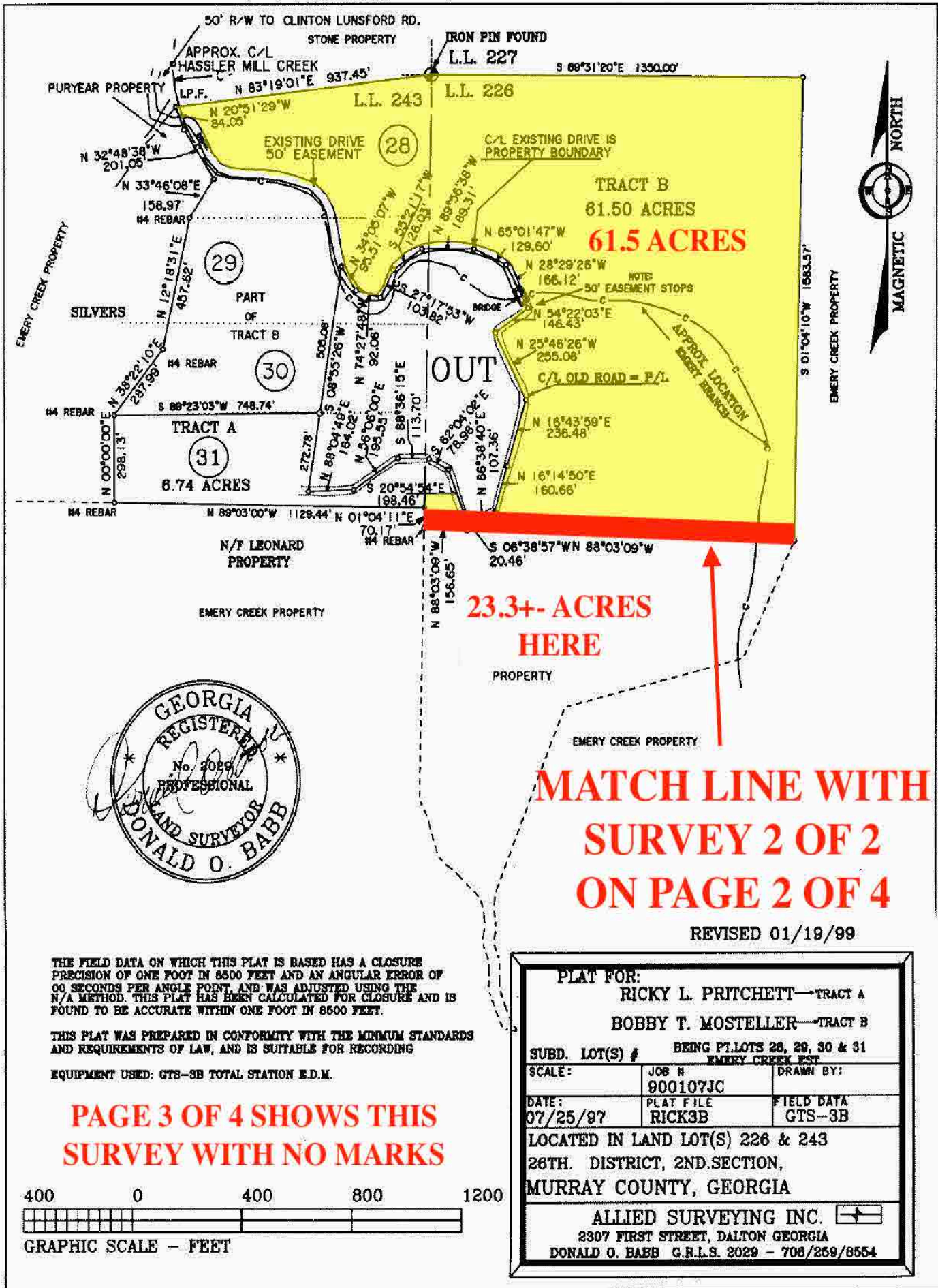


SURVEY INFO PAGE 1 OF 4 - SURVEY 1 OF 2

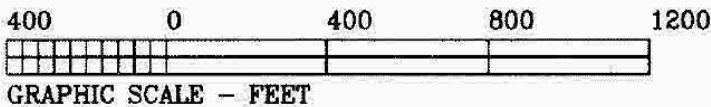


THE FIELD DATA ON WHICH THIS PLAT IS BASED HAS A CLOSURE PRECISION OF ONE FOOT IN 8500 FEET AND AN ANGULAR ERROR OF 00 SECONDS PER ANGLE POINT, AND WAS ADJUSTED USING THE N/A METHOD. THIS PLAT HAS BEEN CALCULATED FOR CLOSURE AND IS FOUND TO BE ACCURATE WITHIN ONE FOOT IN 8500 FEET.

THIS PLAT WAS PREPARED IN CONFORMITY WITH THE MINIMUM STANDARDS AND REQUIREMENTS OF LAW, AND IS SUITABLE FOR RECORDING

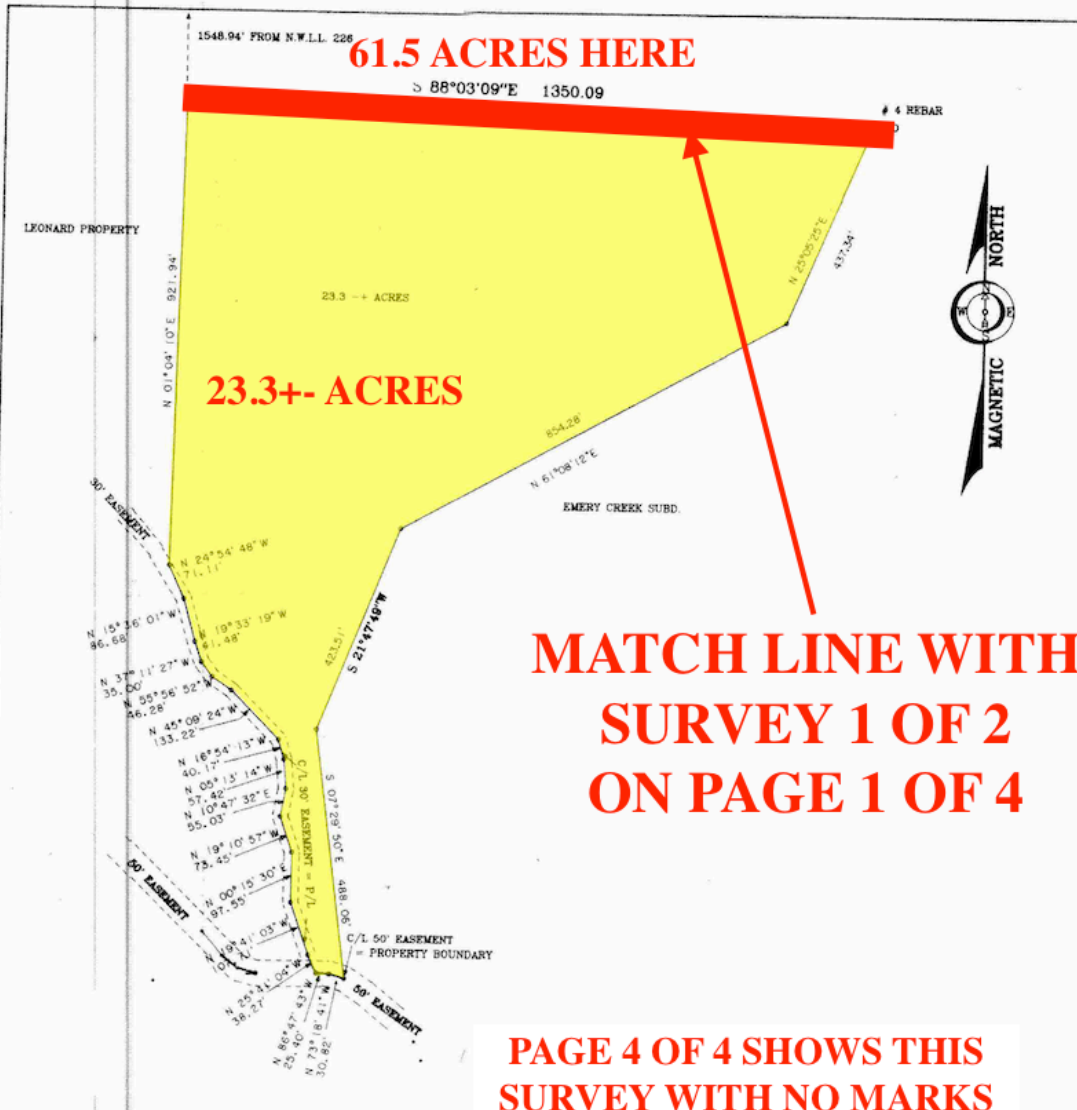
EQUIPMENT USED: GTS-3B TOTAL STATION E.D.M.

PAGE 3 OF 4 SHOWS THIS
SURVEY WITH NO MARKS



PLAT FOR:		
RICKY L. PRITCHETT—TRACT A		
BOBBY T. MOSTELLER—TRACT B		
BEING P.LOTS 28, 29, 30 & 31 EMERY CREEK EST		
SCALE:	JOB # 900107JC	DRAWN BY:
DATE: 07/25/97	PLAT FILE RICK3B	FIELD DATA GTS-3B
LOCATED IN LAND LOT(S) 226 & 243 26TH. DISTRICT, 2ND. SECTION, MURRAY COUNTY, GEORGIA		
ALLIED SURVEYING INC.		
2307 FIRST STREET, DALTON GEORGIA DONALD O. BABB G.R.L.S. 2029 - 706/269/8554		

SURVEY INFO PAGE 2 OF 4 - SURVEY 2 OF 2



PAGE 4 OF 4 SHOWS THIS
SURVEY WITH NO MARKS

THE FIELD DATA ON WHICH THIS PLAT IS BASED HAS A CLOSURE PRECISION OF ONE FOOT IN 8500 FEET AND AN ANGULAR ERROR OF 00 SECONDS PER ANGLE POINT, AND WAS ADJUSTED USING THE N/A METHOD. THIS PLAT HAS BEEN CALCULATED FOR CLOSURE AND IS FOUND TO BE ACCURATE WITHIN ONE FOOT IN 8500 FEET.

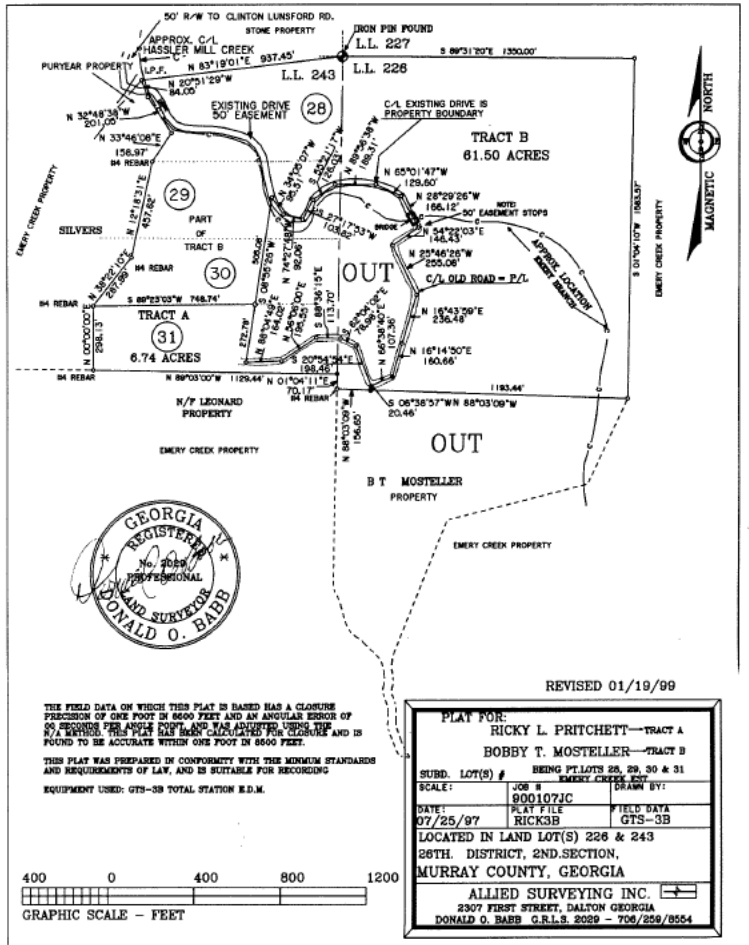
THIS PLAT WAS PREPARED IN CONFORMITY WITH THE MINIMUM STANDARDS AND REQUIREMENTS OF LAW, AND IS SUITABLE FOR RECORDING

EQUIPMENT USED: GTS-3B TOTAL STATION E.D.M.



PLAT FOR: BOBBY MOSTELLER		
SUBD. LOT(S) #		
SCALE: 1" = 200'	JOB # 930930EC	DRAWN BY:
DATE: 02/21/95	PLAT FILE BOBBY	FIELD DATA GTS-3B
LOCATED IN LAND LOT(S) 226 26TH. DISTRICT, 2ND. SECTION, MURRAY COUNTY, GEORGIA		
ALLIED SURVEYING INC. 2307 FIRST STREET, DALTON GEORGIA DONALD O. BABB G.R.L.S. 2029 - 706/259/8554		

SURVEY INFO PAGE 3 OF 4 - SURVEY 1 OF 2



REVISED 01/19/99

PLAT FOR:			
RICKY L. PRITCHETT—TRACT A			
BOBBY T. MOSTELLER—TRACT B			
SUBD. LOT(S) #		BEING P/LOTS 28, 29, 30 & 31	
EMERY CREEK DIST.			
SCALE:	JOB #	DRAWN BY:	
	9001071C		
DATE:	PLAT FILE	FIELD DATA	
07/25/97	RICK3B	GTS-3B	
LOCATED IN LAND LOT(S) 226 & 243			
26TH. DISTRICT, 2ND. SECTION,			
MURRAY COUNTY, GEORGIA			
ALLIED SURVEYING INC.			
2307 FIRST STREET, DALTON GEORGIA			
DONALD O. BARB G.R.L.S. 2029 - 706/258/9554			

THE FIELD DATA ON WHICH THIS PLAT IS BASED HAS A CLOSURE PRECISION OF ONE FOOT IN 8600 FEET AND AN ANGULAR ERROR OF 60 SECONDS PER ANGLE POINT, AND HAS ADJUSTED UNDER THE N/T METHOD. THIS PLAT HAS BEEN CALCULATED FOR CLOSURE AND IS FOUND TO BE ACCURATE WITHIN ONE FOOT IN 8600 FEET.

THIS PLAT WAS PREPARED IN CONFORMITY WITH THE MINIMUM STANDARDS AND REQUIREMENTS OF LAW, AND IS SUITABLE FOR RECORDING.

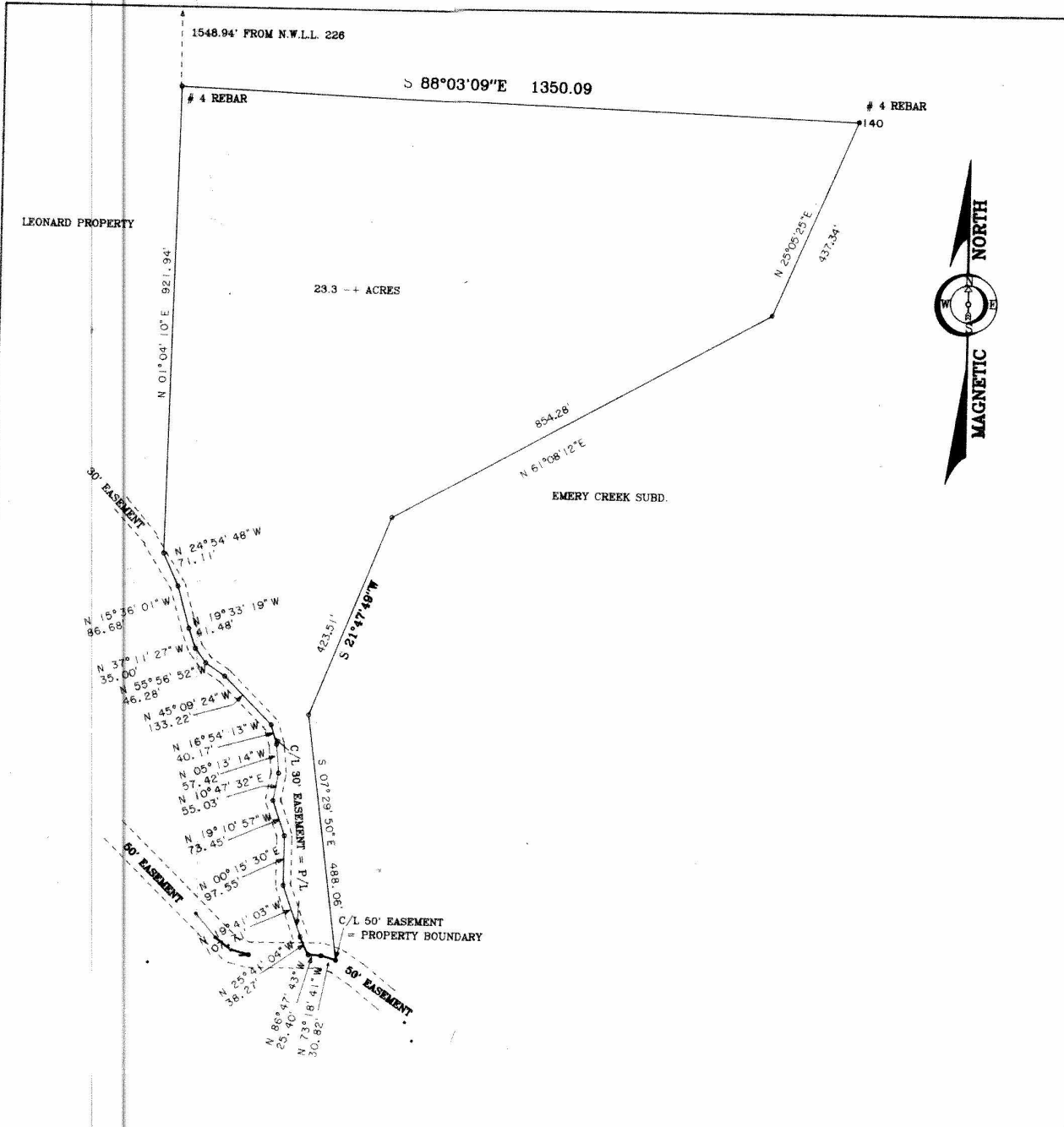
EQUIPMENT USED: GTS-3B TOTAL STATION E.D.M.

400 0 400 800 1200
GRAPHIC SCALE - FEET

STATE OF GEORGIA, CLERK'S OFFICE
MURRAY COUNTY SUPERIOR COURT

I hereby certify this paper was filed for
with 2:15 P M. this 7 day of
Feb 1999 recorded in
Book 83 Page 205 Plat
Day of February 1999

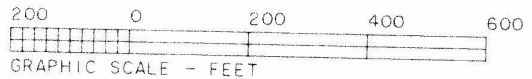
SURVEY INFO PAGE 4 OF 4 - SURVEY 2 OF 2



THE FIELD DATA ON WHICH THIS PLAT IS BASED HAS A CLOSURE PRECISION OF ONE FOOT IN 8500 FEET AND AN ANGULAR ERROR OF 00 SECONDS PER ANGLE POINT, AND WAS ADJUSTED USING THE N/A METHOD. THIS PLAT HAS BEEN CALCULATED FOR CLOSURE AND IS FOUND TO BE ACCURATE WITHIN ONE FOOT IN 8500 FEET.

THIS PLAT WAS PREPARED IN CONFORMITY WITH THE MINIMUM STANDARDS AND REQUIREMENTS OF LAW, AND IS SUITABLE FOR RECORDING

EQUIPMENT USED: GTS-3B TOTAL STATION E.D.M.



PLAT FOR: BOBBY MOSTELLER		
SUBD. LOT(S) #		
SCALE: 1" = 200'	JOB # 930930EC	DRAWN BY:
DATE: 02/21/95	PLAT FILE BOBBY	FIELD DATA GTS-3B
LOCATED IN LAND LOT(S) 226 26TH. DISTRICT, 2ND. SECTION, MURRAY COUNTY, GEORGIA		
ALLIED SURVEYING INC. 2307 FIRST STREET, DALTON GEORGIA DONALD O. BABB G.R.L.S. 2029 - 706/259/8554		