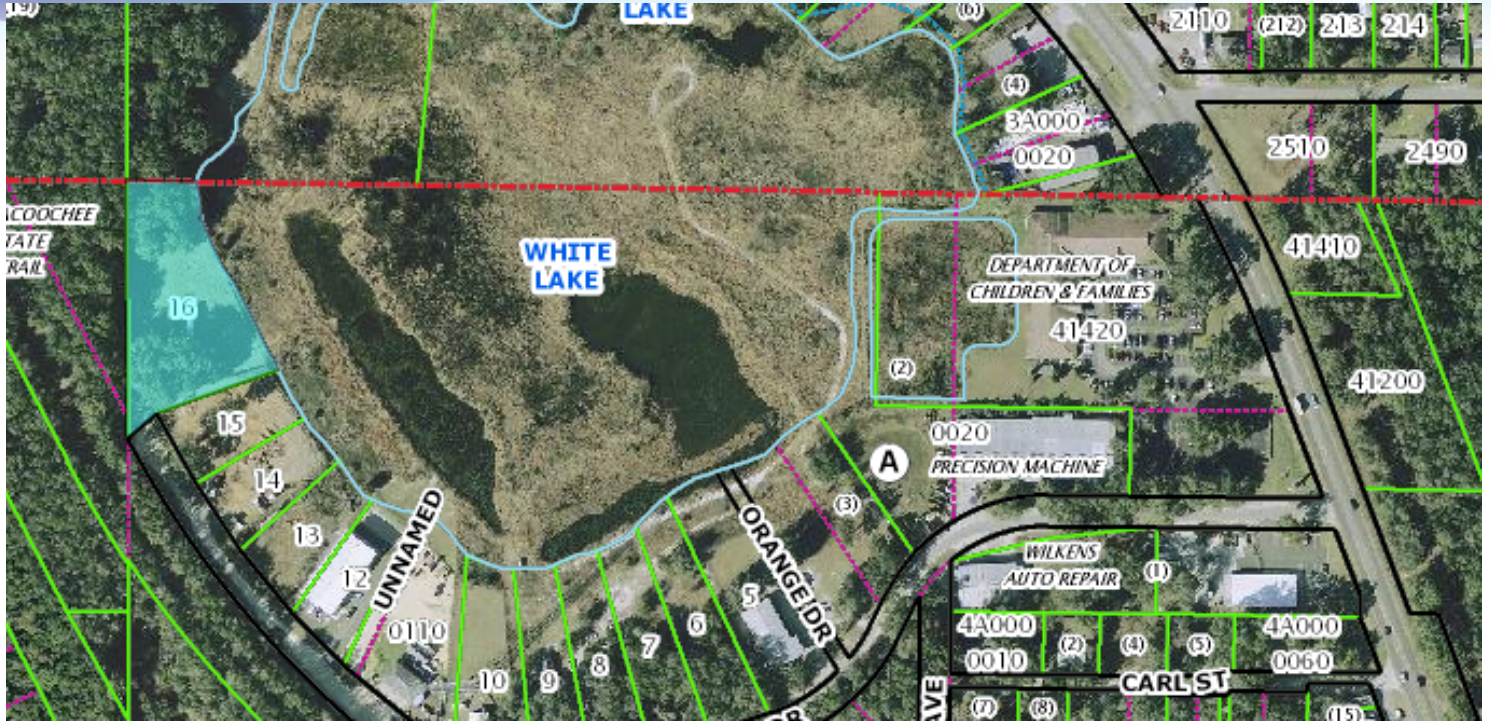


VACANT LAND FOR SALE

Industrial Land • 1722 White Lake Dr. Inverness, FL 34453



OFFERING SUMMARY

Sale Price:	\$90,000
Price / Acre:	\$63,830
Lot Size:	1.41 Acres
Zoning:	IM
APN#:	2425831
Market:	Citrus
Submarket:	Inverness

PROPERTY OVERVIEW

Beautiful shaded vacant industrial land and the end of a tree-lined drive.
At the end of White Lake Dr in an area of other industrial properties.

LOCATION OVERVIEW

Located on White Lake Dr. off N. Florida Ave. (US 41)
2 miles north of Gulf To Lake Hwy. (US Hwy. 44)

JEFFERY T. ROBISON, CCIM

Principal | Broker
321.722.0707 X13
jeff@teamlbr.com

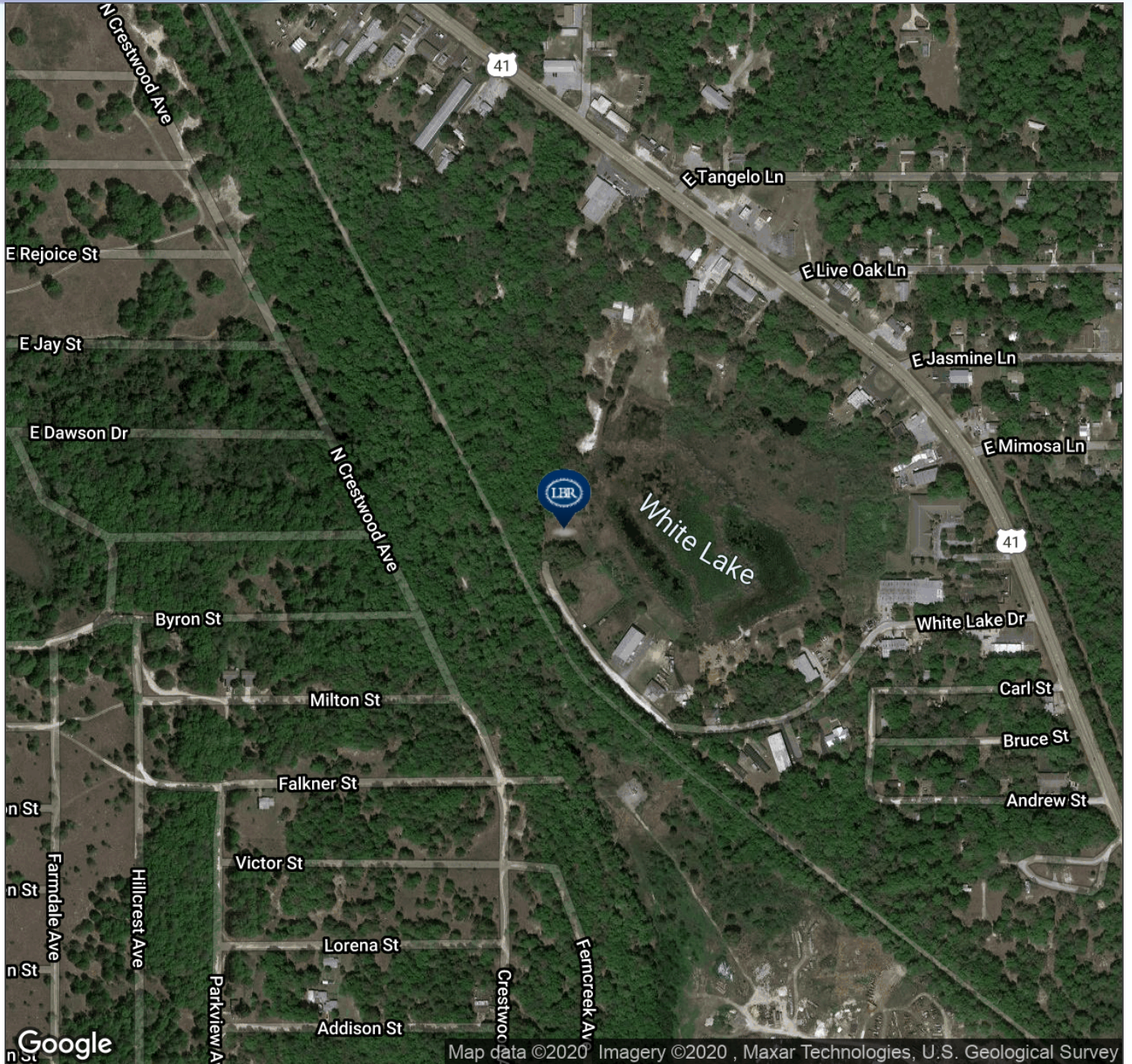
Lightle Beckner Robison

321.722.0707 • teamlbr.com
70 W. Hibiscus Blvd.,
Melbourne, FL 32901

Information contained herein has been obtained through sources deemed reliable but cannot be guaranteed as to its accuracy. A purchaser or lessee is expected to verify all information to his/her own satisfaction. Zoning information subject to change and not warranted. Always confirm current requirements with local governing agencies.

AERIAL MAP

Industrial Land • 1722 White Lake Dr. Inverness, FL 34453



JEFFERY T. ROBISON, CCIM

Principal | Broker
321.722.0707 X13
jeff@teamlbr.com

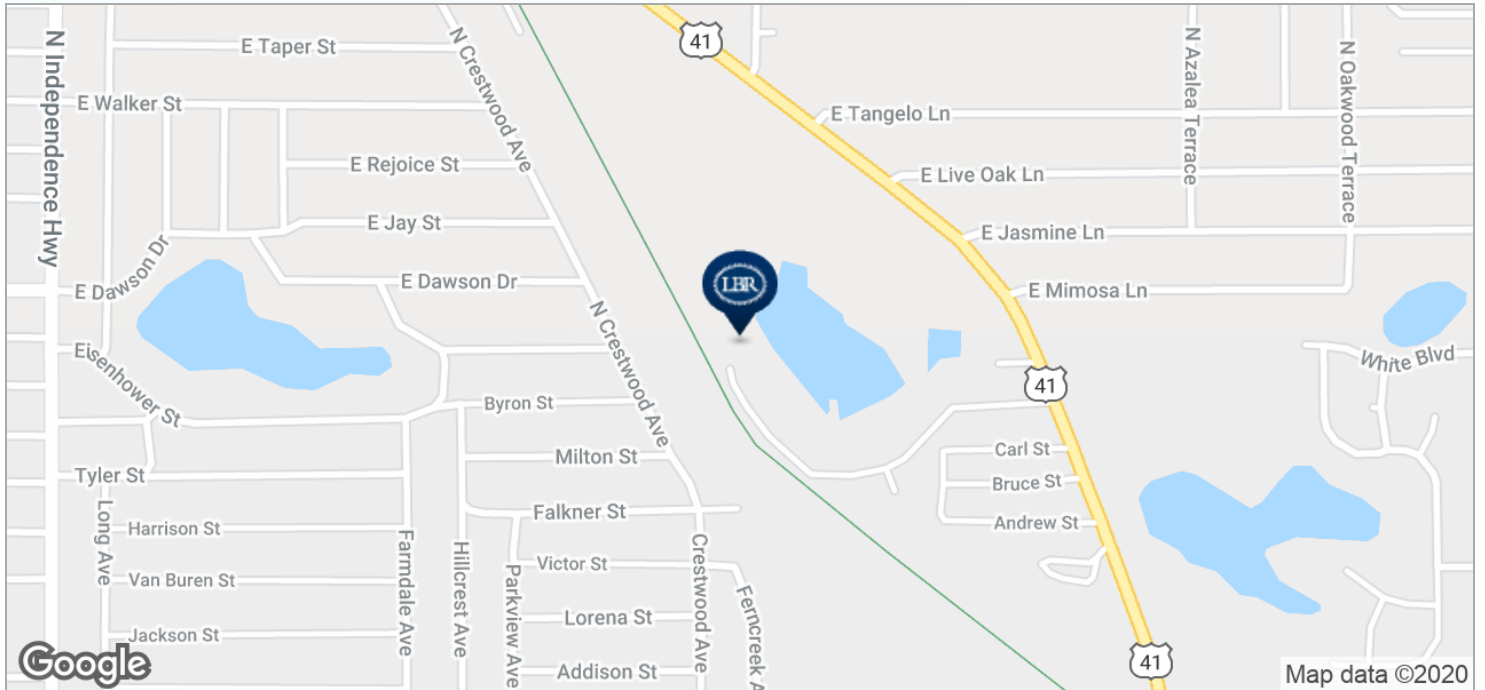
Lightle Beckner Robison

321.722.0707 • teamlbr.com
70 W. Hibiscus Blvd.,
Melbourne, FL 32901

Information contained herein has been obtained through sources deemed reliable but cannot be guaranteed as to its accuracy. A purchaser or lessee is expected to verify all information to his/her own satisfaction. Zoning information subject to change and not warranted. Always confirm current requirements with local governing agencies.

LOCATION MAPS

Industrial Land • 1722 White Lake Dr. Inverness, FL 34453



JEFFERY T. ROBISON, CCIM

Principal | Broker
321.722.0707 X13
jeff@teamlbr.com

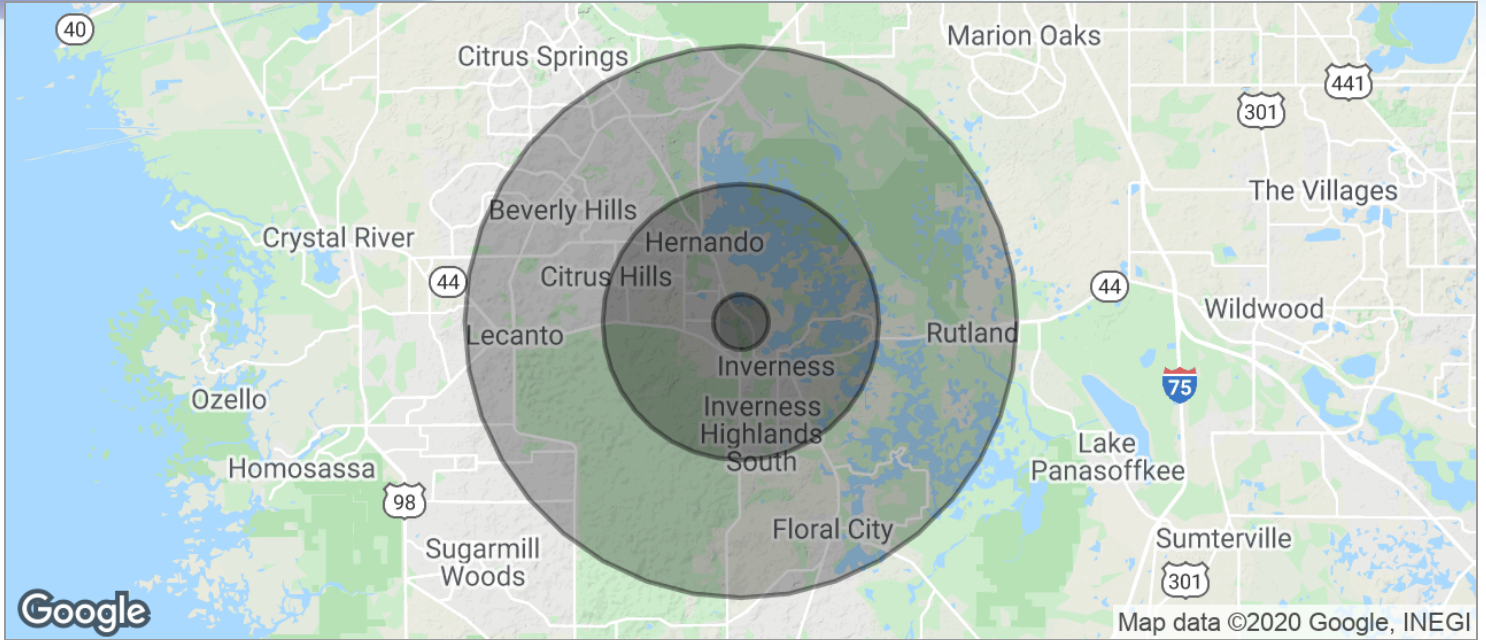
Lightle Beckner Robison

321.722.0707 • teamlbr.com
70 W. Hibiscus Blvd.,
Melbourne, FL 32901

Information contained herein has been obtained through sources deemed reliable but cannot be guaranteed as to its accuracy. A purchaser or lessee is expected to verify all information to his/her own satisfaction. Zoning information subject to change and not warranted. Always confirm current requirements with local governing agencies.

DEMOGRAPHICS MAP

Industrial Land • 1722 White Lake Dr. Inverness, FL 34453



POPULATION	1 MILE	5 MILES	10 MILES
TOTAL POPULATION	1,428	22,054	74,716
MEDIAN AGE	46.2	49.7	52.8
MEDIAN AGE (MALE)	47.1	49.8	51.8
MEDIAN AGE (FEMALE)	45.2	49.6	53.7
HOUSEHOLDS & INCOME	1 MILE	5 MILES	10 MILES
TOTAL HOUSEHOLDS	550	9,162	32,236
# OF PERSONS PER HH	2.6	2.4	2.3
AVERAGE HH INCOME	\$48,352	\$45,884	\$48,820
AVERAGE HOUSE VALUE	\$172,344	\$167,545	\$193,243

* Demographic data derived from 2010 US Census

JEFFERY T. ROBISON, CCIM

Principal | Broker
321.722.0707 X13
jeff@teamlbr.com

Lightle Beckner Robison

321.722.0707 • teamlbr.com
70 W. Hibiscus Blvd.,
Melbourne, FL 32901

Information contained herein has been obtained through sources deemed reliable but cannot be guaranteed as to its accuracy. A purchaser or lessee is expected to verify all information to his/her own satisfaction. Zoning information subject to change and not warranted. Always confirm current requirements with local governing agencies.