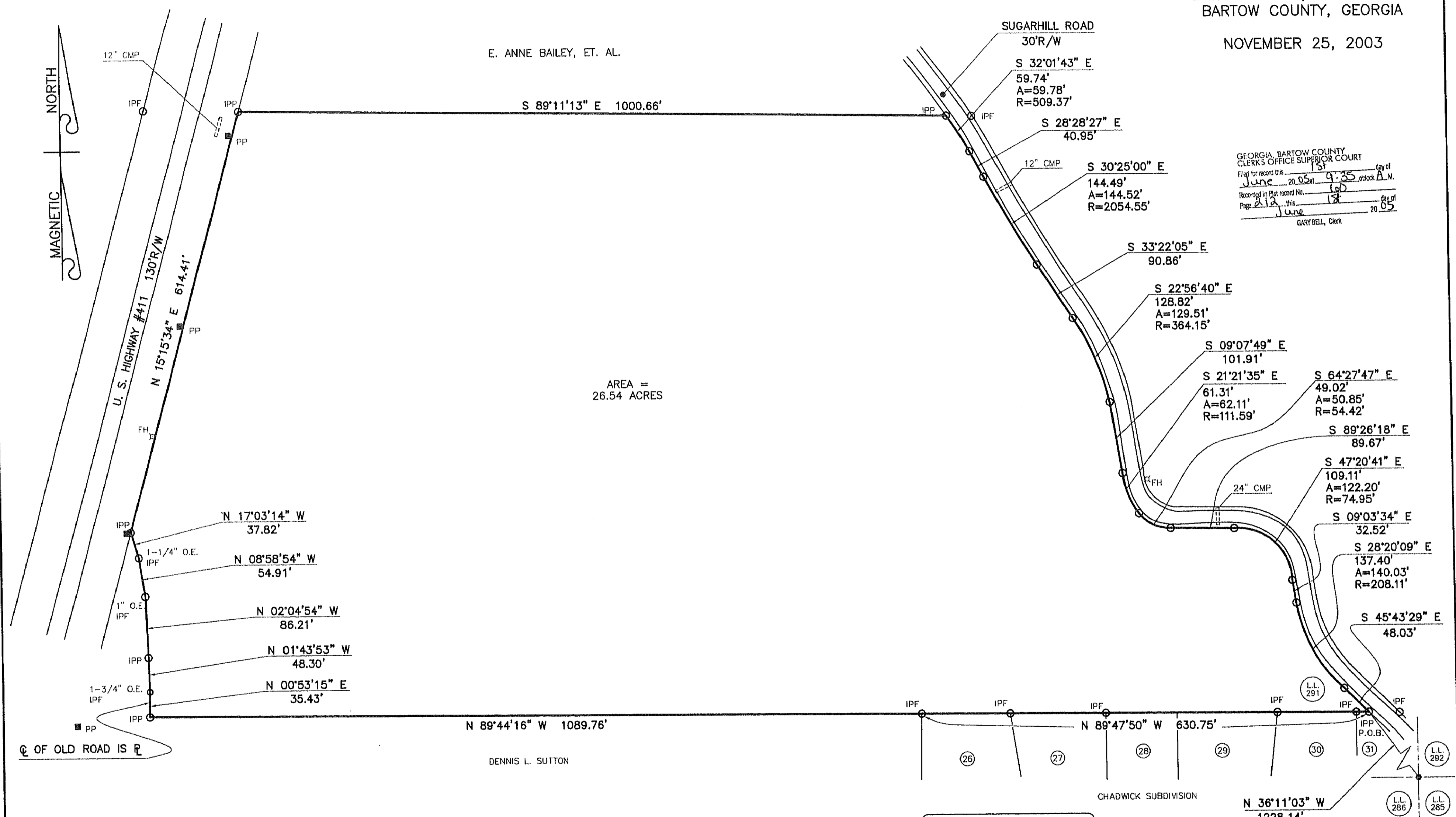


REFERENCE PLATS:
 CHADWICK SUBDIVISION FINAL PLAT BY CHARLES C. FRANKLIN DATED 10-1989.
 SURVEYED FOR MITCHELL SCOGGINS BY JOHNNY R. KNIGHT DATED 8-26-86.
 SURVEY FOR TONY GRANTHAM BY SCOTT L. REECE DATED 9-12-02.

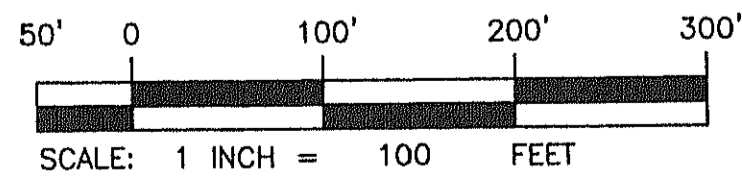
SURVEY FOR
MARGARET O. BURNS
 SITUATE IN LAND LOT 291
 22nd DISTRICT, 2nd SECTION
 BARTOW COUNTY, GEORGIA

NOVEMBER 25, 2003

GEORGIA, BARTOW COUNTY
 CLERK'S OFFICE SUPERIOR COURT
 Filed for record this 1st day of
 June 20 05 at 9:35 o'clock A.M.
 Recorded in Plat record No. 60
 Page 212 of this 18 day of
 June 20 05
 GARY BELL, Clerk



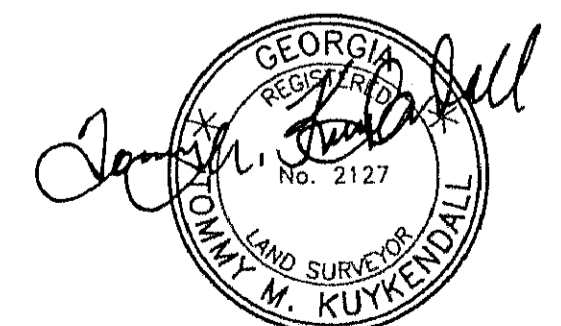
GENERAL NOTES:
 1) ALL IRON PINS ARE 1/2" REBAR UNLESS OTHERWISE DESCRIBED.
 2) ALL UNDERGROUND UTILITIES, IF ANY, ARE NOT SHOWN.
 "F.I.A. OFFICIAL FLOOD HAZARD MAP", COMMUNITY NO. 130463,
 PAGE: 50 F, DATED: 9-29-89, SHOWS THIS PROPERTY
 NOT TO BE IN AN AREA HAVING SPECIAL FLOOD HAZARDS.



LEGEND		
1) IPF - IRON PIN FOUND	8) A. - ARC DISTANCE	15) X - FENCE
2) IPP - IRON PIN PLACED	9) R. - RADIUS	16) RCP - REINFORCED CONC. PIPE
3) L.L.L. - LAND LOT LINE	10) P. - PROPERTY LINE	17) CMP - CORRUGATED METAL PIPE
4) O.E. - OPEN END PIPE	11) R/W - RIGHT OF WAY	18) T - TELEPHONE LINE
5) C.T. - CRIMP TOP PIPE	12) P.O.B. - POINT OF BEGINNING	19) TP - TELEPHONE POLE
6) CONC. - CONCRETE	13) PP - POWER POLE	20) SP - SERVICE POLE
7) C.M. - CONCRETE MONUMENT	14) - - - - - LAND LOT LINE	21) - - - - -

"ALL MATTERS OF TITLE ARE EXCEPTED"
 THE FIELD DATA UPON WHICH THIS PLAT IS PRODUCED HAS A CLOSURE PRECISION OF ONE FOOT IN 33,357 FEET, AND AN ANGULAR ERROR OF 1 SECONDS PER ANGLE POINT, USING A TOPCON GTS 301-D, AND ADJUSTED USING THE COMPASS RULE. THIS PLAT HAS BEEN CALCULATED FOR CLOSURE AND FOUND TO BE ACCURATE WITHIN ONE FOOT IN 182,529 FEET.

KUYKENDALL SURVEYING, INC.
 5746 JACOBS ROAD
 ACWORTH, GA 30102
 PHONE: (770) 974-4238
 FAX: (770) 966-5047
 CADASTRAL SURVEYING
 SUBDIVISION LAYOUT
 LAND PLANNING
 MEMBER OF THE SURVEYING AND MAPPING SOCIETY OF GEORGIA.
 DRAWN BY: GDM FILE: C10703



11-25-2003
 REGISTERED LAND SURVEYOR No. 2127