

FOR LEASE :: MEDICAL OFFICE

13910 FIVAY ROAD
HUDSON, FL 34667

1,220 SF Suite 2 & 1,220 SF Suite 11

DETAILS:

- ⇒ SUITE #2 & #11
1,220 SF each
- ⇒ Lease Rate: \$14.50/ SF

Zoning: C-1

Parcel ID #: 34-24-16-
0000-00100-0020

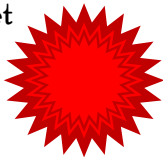
Parking: 94+ Onsite
Spaces

Included in Rent:

Water/ Sewer, Waste
Management Utilities,
Exterior Maintenance,
Landscape and Real
Estate Taxes.

Tenant Pays:

Sales Tax, Electric,
Security, Telephone/
Internet



*****Incentives Available upon Signing a New Lease Today*****

Listing Agent: Tina Marie Eloian, CCIM

Tina@FloridaCommercialGroup.com

Sales | Investments | Leasing | Property Management

401 E. Palm Avenue, Tampa, FL 33602
P. 813.935.9600 | F. 813.930.0946
www.FLORIDACOMMERCIALGROUP.com

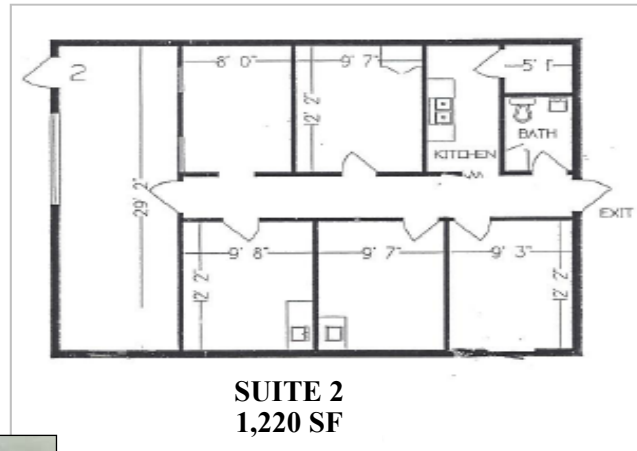


This information is from sources deemed to be reliable. We are not responsible for misstatements of facts, errors or omissions, prior sale, change of price and/or terms or withdrawal from the market without notice. Buyer shall verify all information with their own representatives as well as state and local agencies.

FOR LEASE :: MEDICAL OFFICE

13910 FIVAY ROAD
HUDSON, FL 34667

1,220 SF | SUITE 2
FLOOR PLAN & PHOTOS



Listing Agent: Tina Marie Eloian, CCIM

Tina@FloridaCommercialGroup.com

Sales | Investments | Leasing | Property Management

401 E. Palm Avenue, Tampa, FL 33602
P. 813.935.9600 | F. 813.930.0946
www.FLORIDACOMMERCIALGROUP.com

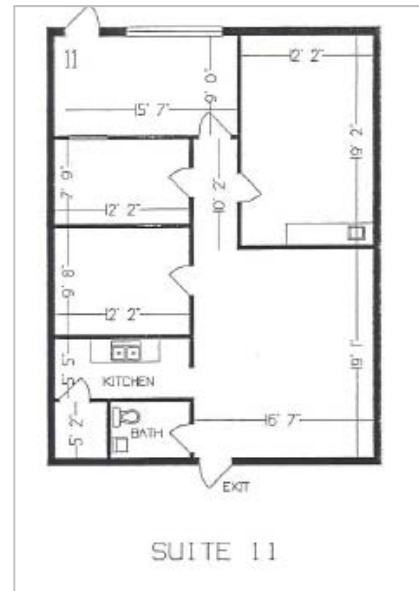


This information is from sources deemed to be reliable. We are not responsible for misstatements of facts, errors or omissions, prior sale, change of price and/or terms or withdrawal from the market without notice. Buyer shall verify all information with their own representatives as well as state and local agencies.

FOR LEASE :: MEDICAL OFFICE

13910 FIVAY ROAD
HUDSON, FL 34667

1,220 SF | SUITE 11
FLOOR PLAN & PHOTOS



Listing Agent: Tina Marie Eloian, CCIM

Tina@FloridaCommercialGroup.com

Sales | Investments | Leasing | Property Management

401 E. Palm Avenue, Tampa, FL 33602
P. 813.935.9600 | F. 813.930.0946
www.FLORIDACOMMERCIALGROUP.com



This information is from sources deemed to be reliable. We are not responsible for misstatements of facts, errors or omissions, prior sale, change of price and/or terms or withdrawal from the market without notice. Buyer shall verify all information with their own representatives as well as state and local agencies.

FOR LEASE :: MEDICAL OFFICE

13910 FIVAY ROAD
HUDSON, FL 34667

DIRECTIONS/AERIAL MAP

DIRECTIONS:

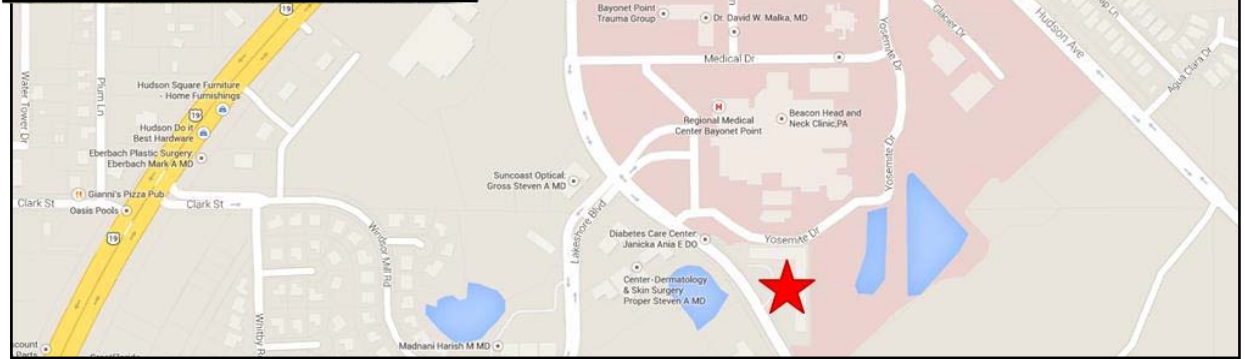
From US Hwy 19, Head East on Hudson Avenue

Turn Right on Fivay Road; Heading South

Property is located on the (East) Left Side of the Road

Destination will be on the left:

13910 Fivay Road Hudson, FL 34667



Listing Agent: Tina Marie Eloian, CCIM

Tina@FloridaCommercialGroup.com

Sales | Investments | Leasing | Property Management

401 E. Palm Avenue, Tampa, FL 33602
P. 813.935.9600 | F. 813.930.0946
www.FLORIDACOMMERCIALGROUP.com



This information is from sources deemed to be reliable. We are not responsible for misstatements of facts, errors or omissions, prior sale, change of price and/or terms or withdrawal from the market without notice. Buyer shall verify all information with their own representatives as well as state and local agencies.