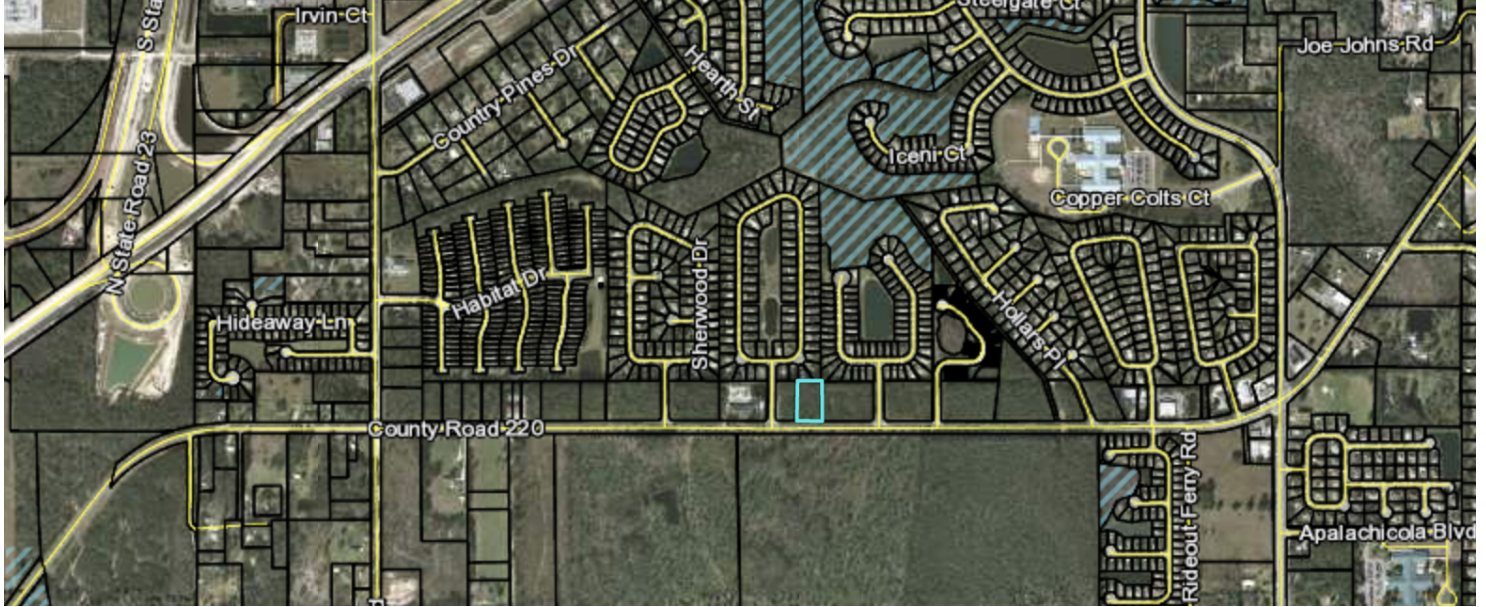


# LAND FOR SALE

0 CR 220, Middleburg, FL 32068



## OFFERING SUMMARY

<b>SALE PRICE:</b>	\$250,000
<b>LOT SIZE:</b>	1.26 Acres
<b>ZONING:</b>	BF CC
<b>MARKET:</b>	Jacksonville
<b>SUBMARKET:</b>	North Clay County
<b>PRICE / SF:</b>	\$4.55

## PROPERTY HIGHLIGHTS

- Excellent Vacant Commercial Lot for Sale in Middleburg, FL
- Located on CR 220 between Henley Rd and Baxley Rd
- Available as neighborhood retail or office
- 1.26 Acres - Includes 183 frontage feet
- Zoned BF CC
- \$250,000



**KW COMMERCIAL**  
4465 U.S. Hwy 17,  
Suite 2  
Fleming Island, FL 32003

**SANDRA KAHLE, CCIM**  
Managing Director  
O: 904.541.0700  
C: 904.838.6446  
skahle@kahlecg.com

**CYNTHIA MCLAIN, CCIM**  
Broker Associate  
O: 904.541.0700  
C: 904.545.4195  
cmclain@kahlecg.com

**Kahle Commercial Group**

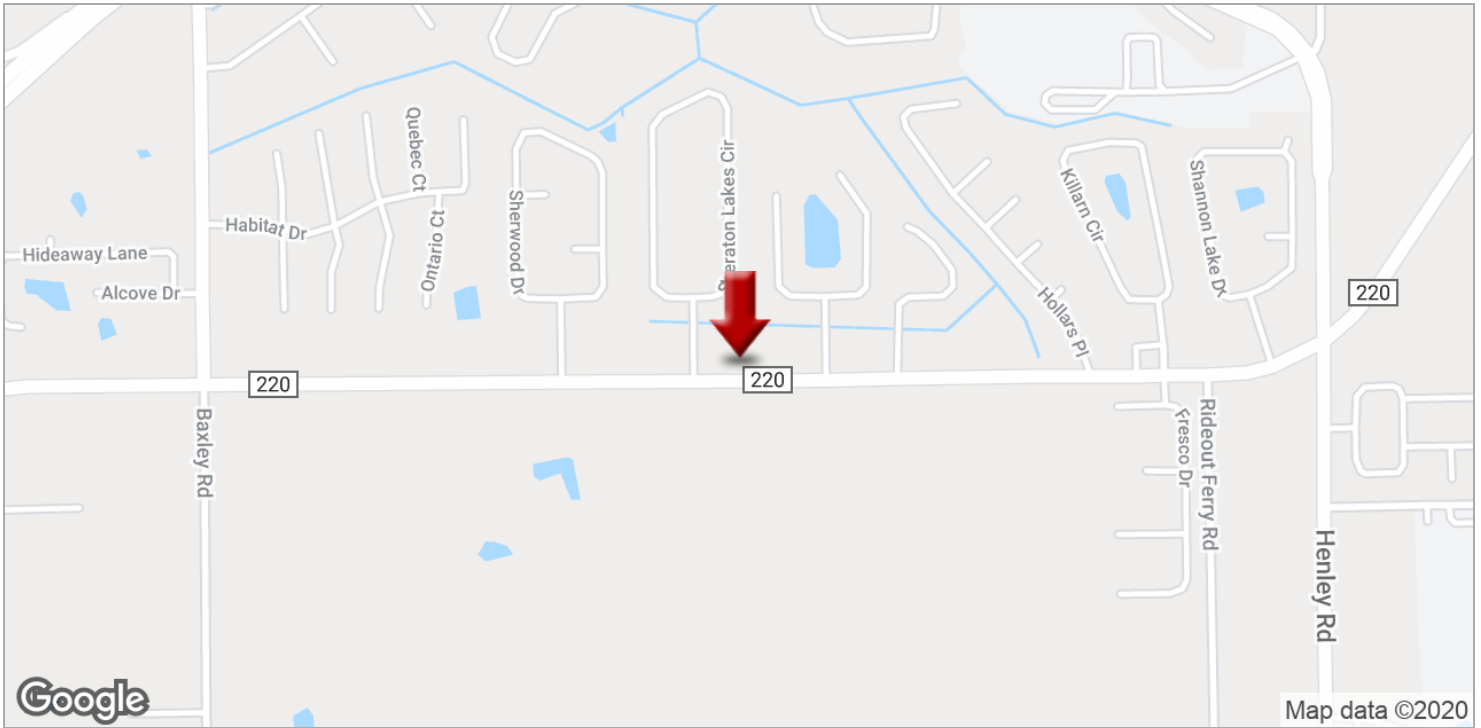
The information contained herein has been obtained from sources deemed reliable. While every reasonable effort has been made to ensure its accuracy, we cannot guarantee it. No responsibility is assumed for any inaccuracies. Readers are encouraged to consult their professional advisors prior to acting on any of the material contained herein.

Each Office Independently Owned and Operated [kwcommercial.com](http://kwcommercial.com)

# LAND FOR SALE



0 CR 220, Middleburg, FL 32068



**KW COMMERCIAL**  
4465 U.S. Hwy 17,  
Suite 2  
Fleming Island, FL 32003

**SANDRA KAHLE, CCIM**  
Managing Director  
O: 904.541.0700  
C: 904.838.6446  
skahle@kahlecg.com

**CYNTHIA MCLAIN, CCIM**  
Broker Associate  
O: 904.541.0700  
C: 904.545.4195  
cmclain@kahlecg.com

**Kahle Commercial Group**

The information contained herein has been obtained from sources deemed reliable. While every reasonable effort has been made to ensure its accuracy, we cannot guarantee it. No responsibility is assumed for any inaccuracies. Readers are encouraged to consult their professional advisors prior to acting on any of the material contained herein.

Each Office Independently Owned and Operated [kwcommercial.com](http://kwcommercial.com)