

LOCATION MAP  
 N.T.S.

**NOTE: CONTRACTOR MUST VERIFY ALL DIMENSIONS AT SITE OF WORK IF ANY DISCREPANCIES ARE FOUND STOP WORKING IMMEDIATELY AND NOTIFY OWNER OR ENGINEER.**

**2nd FLOOR NEW OFFICE AREA:**  
 CLASSIFICATION: BUSINESS (B)  
 OCCUPANT LOAD: 500 SF / 100.15 PEOPLE

PROVIDE SIGN IN THIS PLACE THAT READS: UPSTAIR SPACE IS NOT ACCESSIBLE TO PUBLIC OCCUPANT CAPACITY: 5 PERSONS ZONE 5 15120 PSF 15120 PSF

NEW STAIRWAY AT FRONT OF OFFICE

EXISTING RESTROOM TO REMAIN GRAB BARS TO BE ADDED REFER TO DETAILS ON SHEET A-2 FOR INSTALLATION OF NEW GRAB BARS

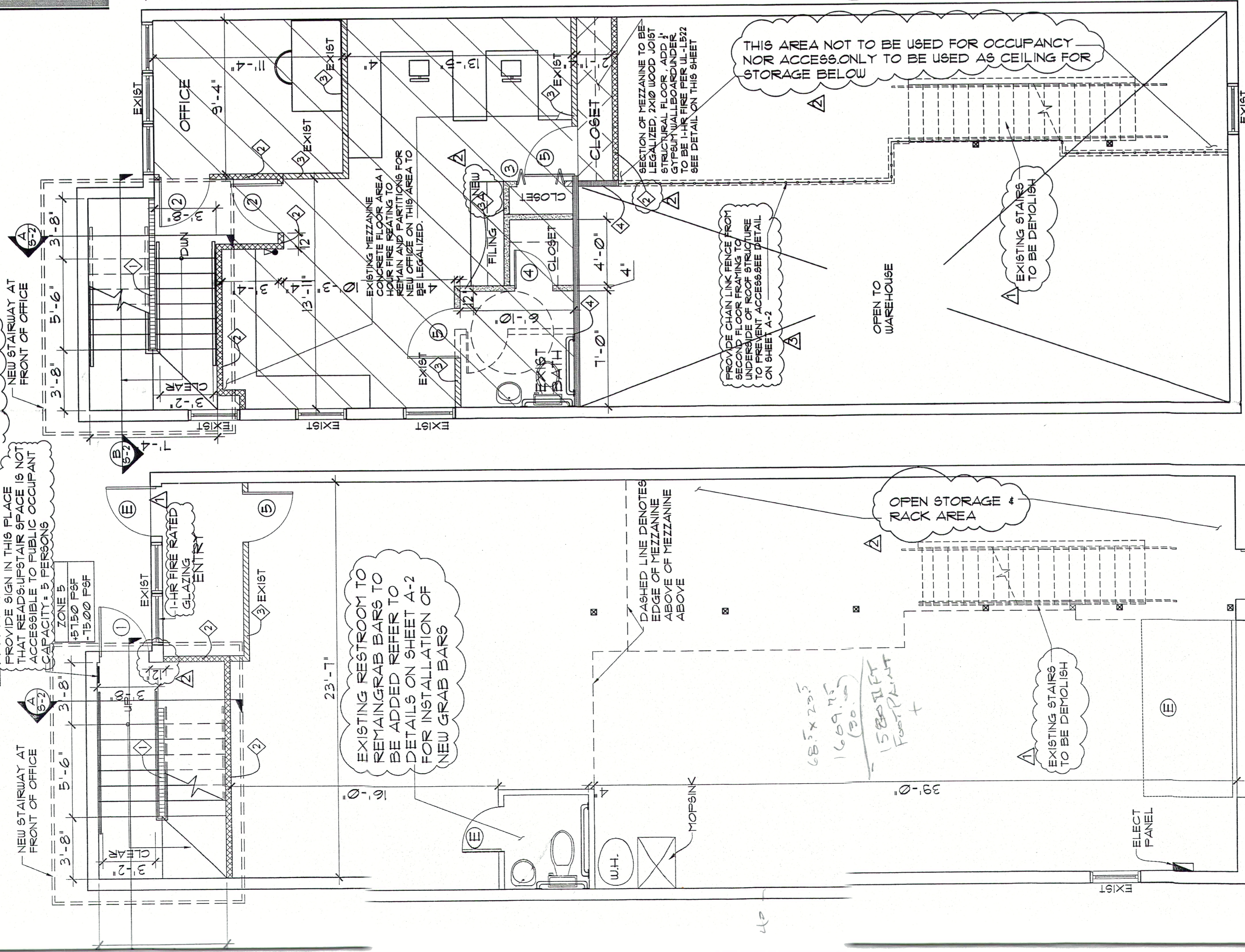
DASHED LINE DENOTES EDGE OF MEZZANINE ABOVE

EXISTING STAIRS TO BE DEMOLISH

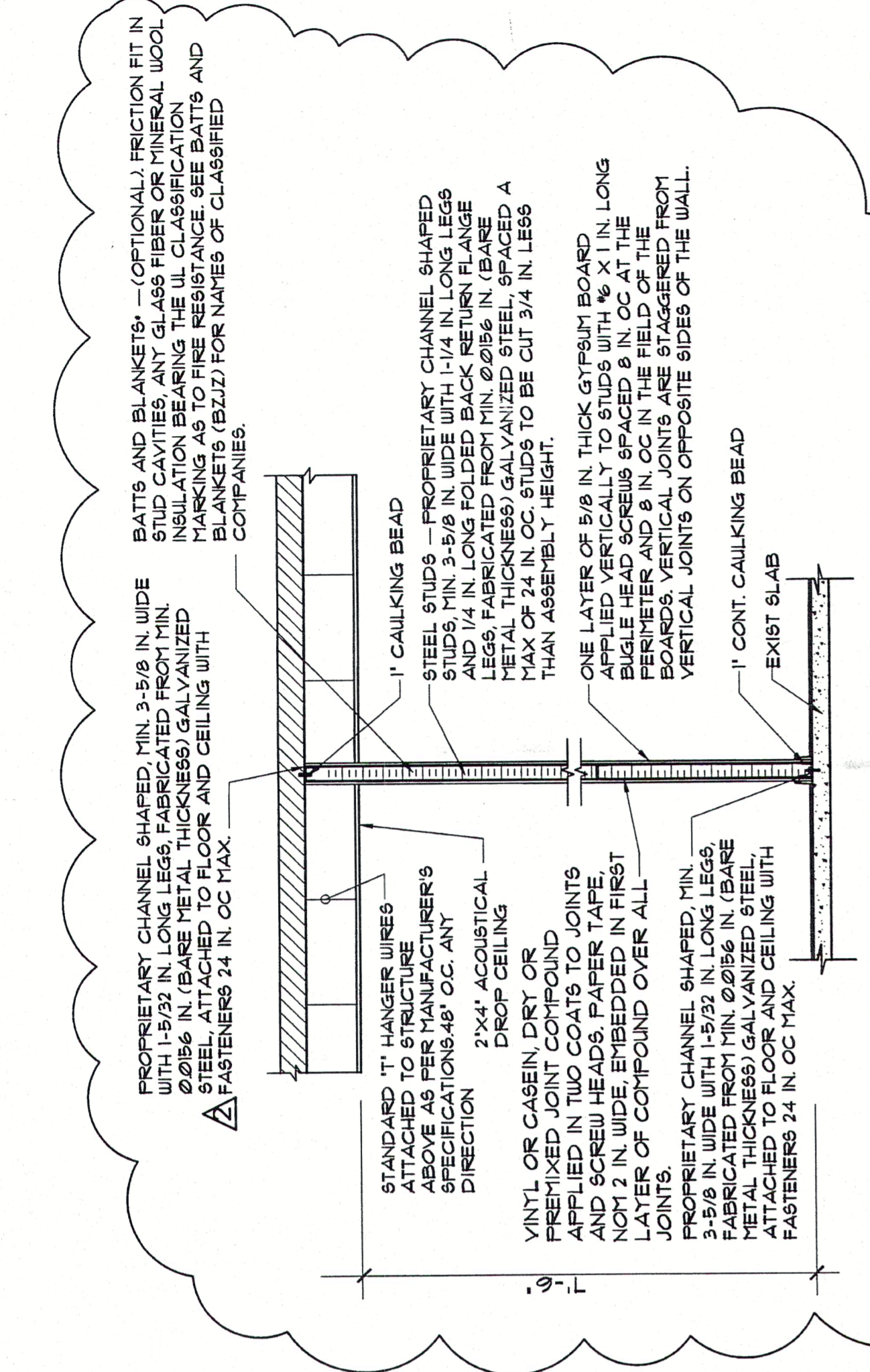
OPEN STORAGE RACK AREA

EXISTING STAIRS TO BE DEMOLISH

PROPOSED SECOND FLOOR PLAN



PROPOSED SECOND FLOOR PLAN  
 SCALE: 1/4"=1'-0"  
 County Building Department - Job Copy  
 1/4/2011 11:02:55 AM  
 PROPOSED GROUND FLOOR PLAN  
 1/4/2011 10:53:33 AM A BLDG Approved



1-HR FIRE RATED PARTITION DETAIL C  
 N.T.S.

Fire Resistance Ratings - ANSI/VOL 263  
 Design No. V485  
 December 30, 2008  
 Nonbearing Uplift Rating - 1 Hr

**LEGEND**

- ◇ NON RATED LOW PARTITION TO BE USED FOR STAIRS/GUARDRAIL PURPOSES ONLY. 42" HEIGHT ABOVE FINISH FLOOR/SEE DETAIL A THIS SHEET
- ▤ NEW 1-HR FIRE RATED PARTITIONS FROM SLAB TO EXIST CEILING SLAB PER UL 263 DESIGN V485. TO BE BUILT PER UL DETAIL ON THIS SHEET/DETAIL C
- ▥ EXISTING STANDARD PARTITION W/ 3-5/8" STEEL STUDS (25 Ga) @ 24" O.C. W/ 1/2" DRYWALL. EACH SIDENON RATED. TO BE LEGALIZED.
- ▧ NEW STANDARD PARTITION W/ 3-5/8" STEEL STUDS (20 Ga) @ 16" O.C. W/ 1/2" DRYWALL. EACH SIDENON RATED.
- ▨ EXISTING STANDARD PARTITION W/ 3-5/8" STEEL STUDS & 1/2" GYPSUM BOARD TO BE REPAIR BY ADDING ONE LAYER OF 1/2" GYPSUM BOARD AT EACH SIDE FROM FLOOR TO CEILING & BE CONVERTED INTO 1-HR FIRE RATED. PER UL 263 DESIGN V485 ON THIS SHEET/DETAIL C
- ▩ EXIST EXTERIOR WALL TO REMAIN
- EXIST PARTITION TO BE REMOVED
- ⓔ EXISTING TO REMAIN
- FIRE EXTINGUISHER

**DOOR SCHEDULE**

No.	TYPE	W	H	THR	NOA	REMARKS
1	EXTERIOR METAL DOOR	36"	80"	1-1/2"	-	IMPACT RESISTANT DOOR MUST HAVE OPEN BAR AND SELF-CLOSURE SYSTEM. 1-HR FIRE RATED
2	INTERIOR DOOR	36"	80"	1-1/2"	-	1-HR FIRE RATED
3	BI-FOLD	24"	80"	1-1/2"	-	
4	INTERIOR DOOR	37"	80"	1-1/2"	-	
5	INTERIOR DOOR	36"	80"	1-1/2"	-	
6	EXISTING TO REMAIN					

**FIRE RATED FLOOR/CEILING DETAIL**  
 N.T.S.

Gypsum Wallboard Floor/Ceiling - Wood Framing (wood joists with rough and finished floor)  
 No. Fire Rating: SINGLE LAYER  
 Ref. Design No. Description: STC Test No. IIC  
 No. Uplift: 0 upl & 1 hd

1 1 Hr. UL 1522 1/2" (12mm) Fire-Shield C Gypsum Wallboard nail attached to 2 x 10 (38mm x 24mm) wood joists spaced 16 o.c. (406mm). U. design. US2 permits option of floor topping over plywood.

PROPRIETARY CHANNEL SHAPED MIN. 3-5/8" IN WIDE WITH 1-1/2" IN LONG LEGS FABRICATED FROM MIN. 0.0156" IN (BARE METAL THICKNESS) GALVANIZED STEEL ATTACHED TO FLOOR AND CEILING WITH FASTENERS 24 IN. O.C. MAX.

STANDARD 1" HANGER WIRES ATTACHED TO STRUCTURE ABOVE CEILING IN ANY DIRECTION

2"x4" ACQUISITIONAL DROPPING CEILING

VINYL OR CASHEIN DRY OR PREMIXED JOINT COMPOUND APPLIED IN TWO COATS TO JOINTS AND SCREW HEADS. PAPER TAPE, NOT 2 IN. WIDE, EMBEDDED IN FIRST LAYER OF COMPOUND OVER ALL JOINTS.

PROPRIETARY CHANNEL SHAPED MIN. 3-5/8" IN WIDE WITH 1-1/4" IN LONG LEGS FABRICATED FROM MIN. 0.0156" IN (BARE METAL THICKNESS) GALVANIZED STEEL ATTACHED TO FLOOR AND CEILING WITH FASTENERS 24 IN. O.C. MAX.

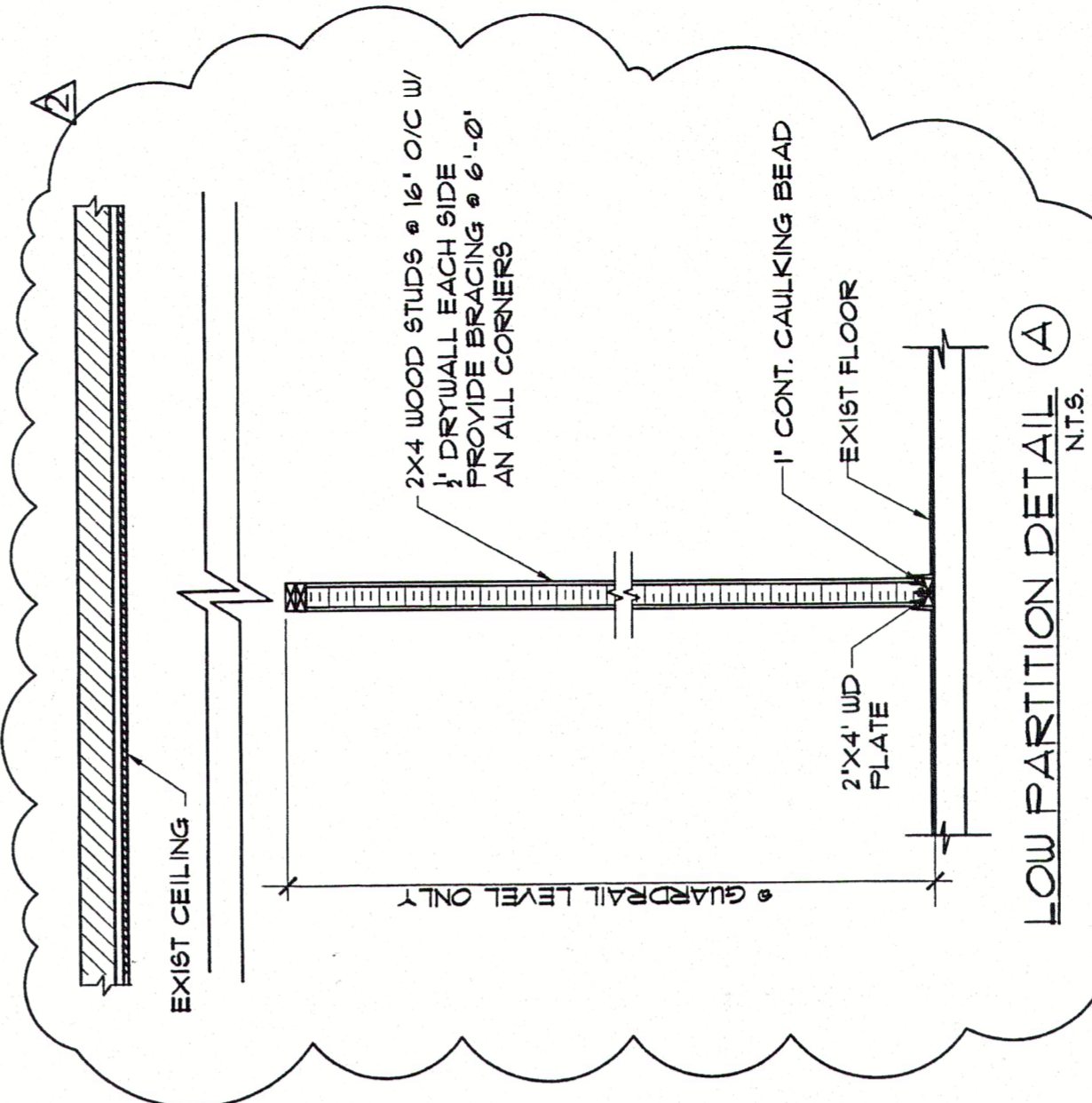
1" CAULKING BEAD

STEEL STUDS 3-5/8" IN WIDE WITH 1-1/4" IN LONG LEGS AND 1/4" IN LONG FOLDED BACK RETURN FLANGE LEGS FABRICATED FROM MIN. 0.0156" IN (BARE METAL THICKNESS) GALVANIZED STEEL, SPACED A MAX OF 24 IN. O.C. STUDS TO BE CUT 3/4 IN. LESS THAN ASSEMBLY HEIGHT.

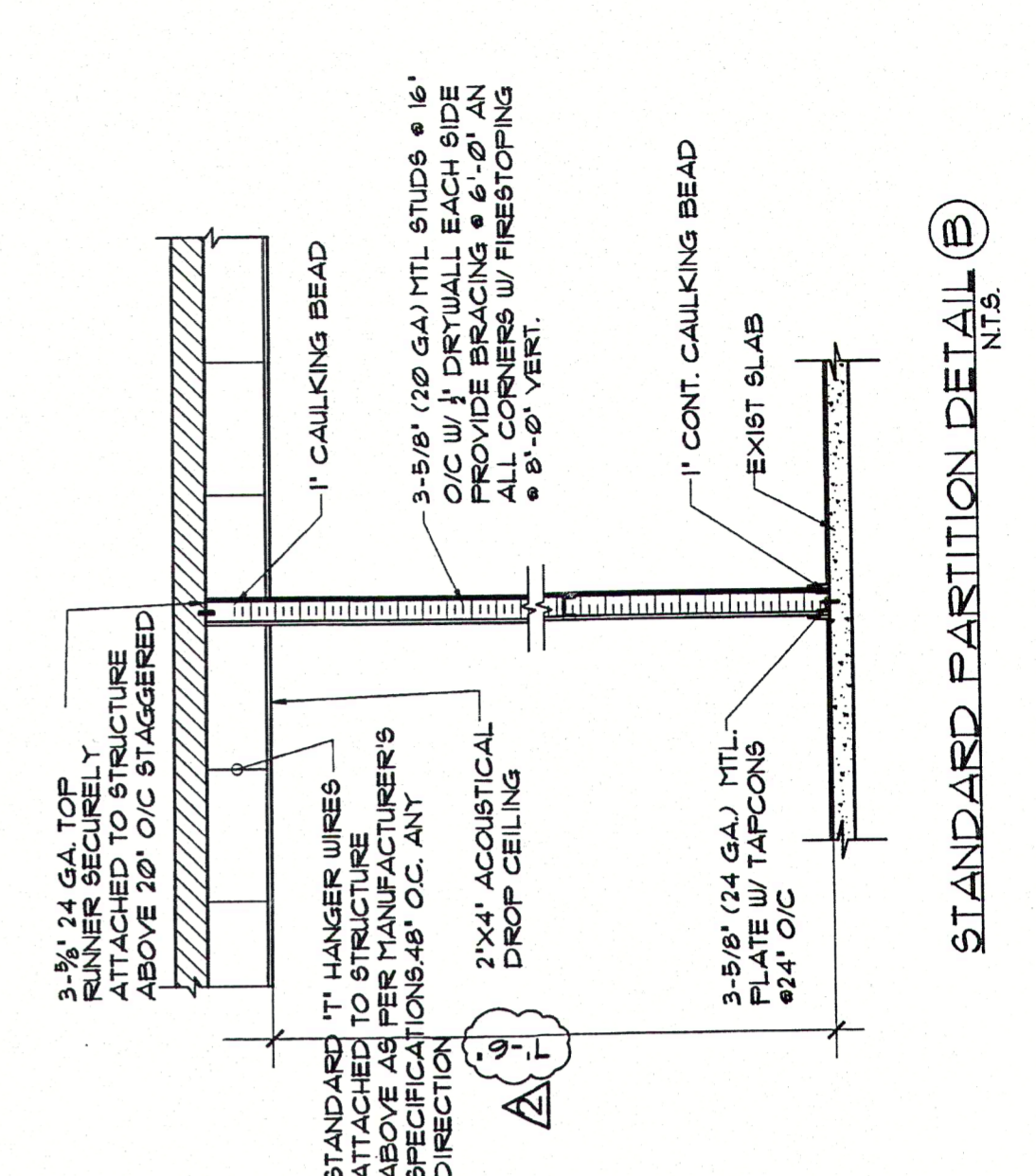
ONE LAYER OF 5/8" IN THICK GYPSUM BOARD APPLIED VERTICALLY TO STUDS WITH 1/8" X 1 IN. LONG BULGE HEAD SCREWS SPACED 8 IN. O.C. AT THE PERIMETER AND 8 IN. O.C. IN THE FIELD OF THE BOARD. VERTICAL JOINTS ARE STAGGERED BY BOARDS. VERTICAL JOINTS ON OPPOSITE SIDES OF THE WALL.

1" CONT. CAULKING BEAD

EXIST SLAB



LOW PARTITION DETAIL A  
 N.T.S.



STANDARD PARTITION DETAIL B  
 N.T.S.

BATTS AND BLANKETS - (OPTIONAL) FRICTION FIT IN STUD CAVITIES, ANY GLASS FIBER OR MINERAL WOOL INSULATION BEARING THE UL CLASSIFICATION MARKING AS TO FIRE RESISTANCE SEE BATTS AND BLANKETS (BZZJ) FOR NAMES OF CLASSIFIED COMPANIES.

2"x4" WOOD STUDS @ 16" O.C. W/ 1/2" DRYWALL EACH SIDE PROVIDE BRACING @ 6'-0" AN ALL CORNERS

1" CONT. CAULKING BEAD

EXIST FLOOR

2"x4" W/ FLATE

EXIST CEILING

3-5/8" (20 GA) MTL STUDS @ 16" O.C. W/ 1/2" GYPSUM BOARD EACH SIDE PROVIDE BRACING @ 6'-0" AN ALL CORNERS W/ FIRESTOPPING @ 8'-0" VERT.

1" CAULKING BEAD

EXIST SLAB

1" CONT. CAULKING BEAD

3-5/8" (24 GA) MTL STUDS @ 16" O.C. W/ 1/2" GYPSUM BOARD EACH SIDE PROVIDE BRACING @ 6'-0" AN ALL CORNERS W/ FIRESTOPPING @ 8'-0" VERT.

STANDARD 1" HANGER WIRES ATTACHED TO STRUCTURE ABOVE CEILING PER MANUFACTURER'S SPECIFICATIONS @ 48" O.C. ANY DIRECTION

2"x4" ACQUISITIONAL DROPPING CEILING

3-5/8" (24 GA) MTL STUDS @ 16" O.C. W/ 1/2" GYPSUM BOARD EACH SIDE PROVIDE BRACING @ 6'-0" AN ALL CORNERS W/ FIRESTOPPING @ 8'-0" VERT.