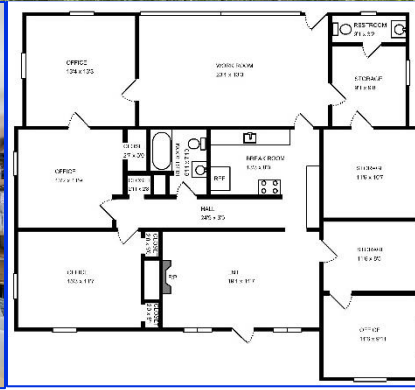
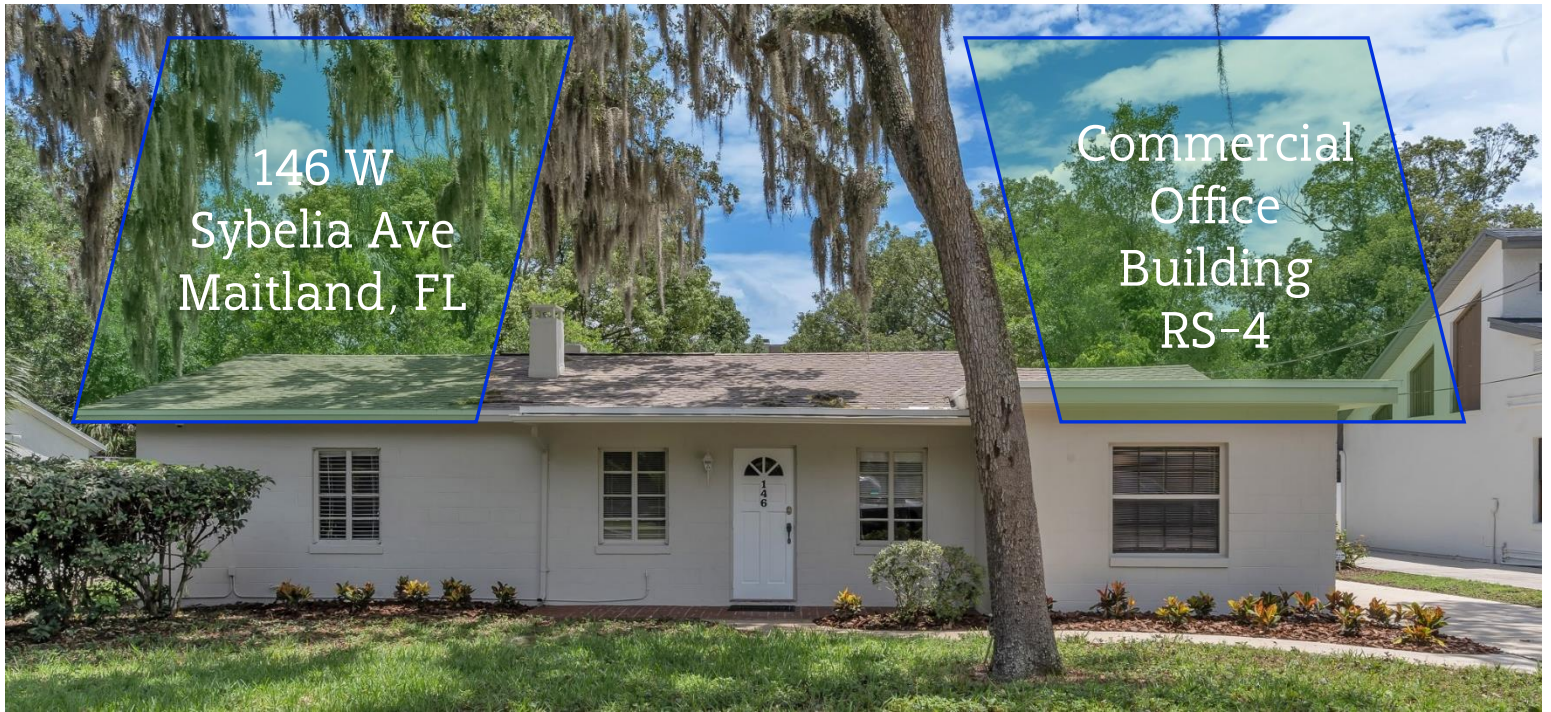


146 W  
Sybelia Ave  
Maitland, FL

Commercial  
Office  
Building  
RS-4



Free-standing office building in the heart of downtown Maitland. Located just 2 buildings off Maitland Avenue, and just north of the post office. Property is convenient to Maitland Blvd and I-4. Plenty of room for you and your employees. Downtown Orlando and the Orange County and Federal Courthouses are less than 10 miles away. Downtown Sanford and the Seminole County Courthouse are 15 miles. The property is located adjacent to a residential area. Fresh exterior paint, roof replaced in 2019, HVAC replaced in 2015.

- 2000 sf
- 4 Offices
- Conference/Meeting/
- Group Therapy Room
- Reception
- Multiple Storage Rooms/Areas
- Kitchen
- 2 Restrooms
- Exceptional Onsite Parking
- Front and Back Entrances

Wm. Paul Henderson II  
REALTOR  
(407) 617-6615  
Keller Williams Commercial

**kw** WINTER PARK  
KELLERWILLIAMS. REALTY