

- Industrial
- Commercial
- Office
- Land
- Business

## FOR SALE

### Vacant Farmland 9.68 Acres

9.68 acres of good farmland in unincorporated Hampshire on Big Timber Road. Currently being farmed and rented for approx. \$500/yr which covers the taxes. This is a good opportunity for a farmer or speculator to grab some land that could be worth more in the future as development gets there. Close to I-90, this will be a nice spot for development. Only \$28,409 /ac. Visit Premier Commercial Realty website to see more listings.



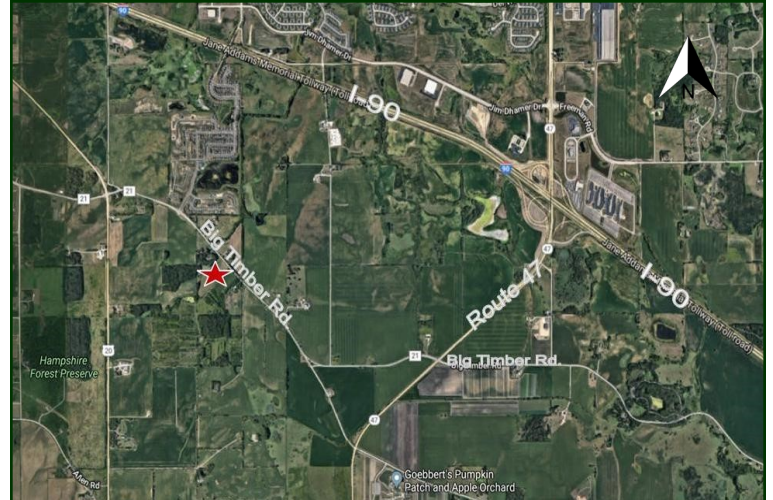
MLS: 10514099

#### PROPERTY SPECIFICATIONS

Description:	Farmland
Land Size:	9.68 Acres 421,661 SF
Possession:	Negotiable
Topography:	Flat
Environmental Status:	TBD
Utilities:	Nearby
Sewer:	N/A
Water:	N/A
Frontage Dimensions:	350' on Big Timber Rd.
Zoning:	F
Real Estate Taxes:	\$323.14 (2019)
Sale Price:	<b>\$275,000</b> (\$28,409/ac)

No warranty or representation is made as to the accuracy of the foregoing information. Terms of sale or lease and availability are subject to change or withdrawal without notice. This document is for information purposes only. No offer of sub-agency is being made.

Demographics	1 mile	3 miles	5 miles
Avg. HH Income	\$71,071	\$66,542	\$86,459
Population	798	13,323	53,871



**Directions:** Big Timber Road in between Route 47 and Route 20  
**PIN: 02-18-300-015**

June 11, 2020

[CLICK HERE](#)  
TO VISIT OUR WEBSITE

[www.PremierCommercialRealty.com](http://www.PremierCommercialRealty.com)

9225 S. IL Route 31  
Lake in the Hills, IL 60156  
Office: 847-854-2300  
Fax: 847-854-2380

**Kevin Kaplan - Broker Associate**  
Office: 847-854-2300 Ext. 13  
Cell: 309-261-0920  
KevinK@PremierCommercialRealty.com

**Bruce Kaplan - Senior Broker**  
Office: 847-854-2300 Ext. 20  
Cell: 847-507-1759  
BruceK@PremierCommercialRealty.com

- Industrial
- Commercial
- Office
- Land
- Business

0 Big Timber Road  
Hampshire, IL 60140

