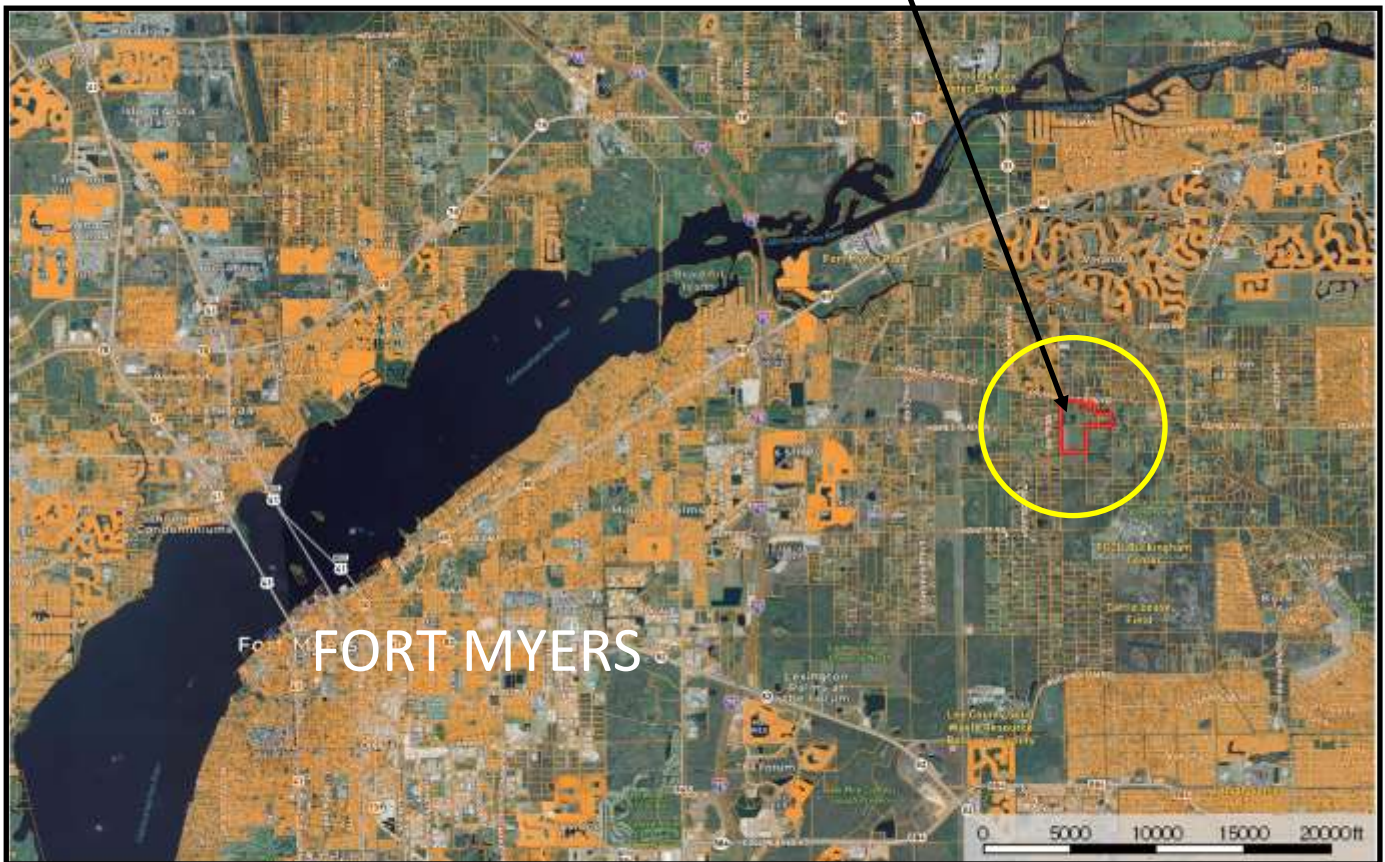


99+ Acres  
Family Ranch

Buckingham,  
Lee County, FL  
Just East of Fort Myers  
Only 3 miles from  
I-75 exit Hwy 80





Main House—CBS construction 3 bedroom, 2 bath with Screened porch

3-truck-sized parking carport

Large 60x45 Workshop with Screened breakroom with kitchenette and bathroom

Horse Stable with 2 stalls

Horse Shoe game pits

Tire Swings from huge Oak Tree



House #2—CBS Construction 3 bedroom, 2 bath with screened back porch

Metal Roof and paved parking areas

Large Water system

Pole Barn 25x60x12h

Workshop 30x65

Large Oak Trees



House #3 CBS with Swimming Pool

Metal Roof

Carport, circular drive

Road Frontage on Higginbotham Rd.



**Gulfland Real Estate**



Contact Mac Martin, ALC GRI Cell 863-990-2322





250 x 150 Lighted Training Arena with Observation Tower

4 stall horse stable ..... Calf Roping Shoot

Water Supply, Seven (7) Light Poles





POLICY 1.4.3: The Rural Community Preserves future land use category requires special design approaches to maintain existing rural character, for example: conservation easements, flexible road design standards (including relocation of future arterials not serving the rural community), special fencing and commercial sign standards, and retention of historic rural uses. These areas are not programmed to receive urban-type capital improvements. Lands within this category are not to be converted to future urban or suburban areas; rather, they are to remain permanently rural in character and use. These areas are restricted to low density residential uses (with minimum lot size requirements), agricultural uses, and minimal non-residential uses that are needed to serve the rural community. Property in this category may not be rezoned to any RV district. Maximum density is one dwelling unit per acre (1 du/acre). (Ordinance No. 91-19, 94- 30, 17-13, 18-14)

[https://library.municode.com/fl/lee\\_county/codes/land\\_development\\_code?nodeId=LADECO\\_CH34ZO\\_ARTVIDIRE\\_DIV2AGDI\\_S34-653USRETA](https://library.municode.com/fl/lee_county/codes/land_development_code?nodeId=LADECO_CH34ZO_ARTVIDIRE_DIV2AGDI_S34-653USRETA)