

FOR SALE

607 - 615 NW St. Lucie Crescent

Stuart, FL 34994

Office Building Complex



**** PRICE REDUCTION ****

PROPERTY OVERVIEW

Two CBS constructed buildings comprising 11 executive suites in each 3,100+/- sf building. The new leasing and management team in 2018 oversaw the many cosmetic improvements that face-lifted these buildings creating renewed interest that soared occupancy to nearly 100%. Upon request is the occupancy, income and expenses details.

LOCATION OVERVIEW

Riverview Executive Suites is a charming old Florida Style Office Complex nestled in a quaint residential neighborhood of beautiful historic Stuart, Florida. This property is exceptionally located, just west of US Highway 1 and south of the Roosevelt Bridge. The property benefits from a quiet, serene setting surrounded by lush landscaping and the captivating beauty and breezes of the Saint Lucie River that's just steps away. A perfect environment for the professional that desires an AFH (Away From Home) office. The site is also within walking distance to Historic Downtown Stuart, home to numerous shops, restaurants, antique shops, art galleries and boutiques, and minutes from the Martin County Courthouse, Martin Memorial Hospital and Interstate 95.

OFFERING SUMMARY

Building Size:	6,240 SF
Land Size:	0.63 Acres
Zoning:	R-3 (Multi-Family/Office) - City of Stuart

SALE PRICE **\$995,000**

Jeffrey D. Chamberlin
President/Broker, CCIM, SIOR
772.220.4096 x101
chamberlin@slccommercial.com

Patty And Ken Novak
Broker Associate
772.220.4096 x105
pnovak@slccommercial.com

SLC Commercial
2488 SE Willoughby Blvd
Stuart, FL 34994
772.220.4096 | slccommercial.com


SLC Commercial
Realty & Development

The information contained herein has been obtained from sources believed to be reliable, but no warranty or representation, expressed or implied, is made. All sizes and dimensions are approximate. Any prospective buyer should exercise prudence and verify independently all significant data and property information. This is NOT an offer of sub-agency or co-brokerage.

607 St. Lucie Crescent

607 - 615 NW St. Lucie Crescent, Stuart, FL 34994

Office Building Complex



Jeffrey D. Chamberlin
President/Broker, CCIM, SIOR
772.220.4096 x101
chamberlin@slccommercial.com

Patty And Ken Novak
Broker Associate
772.220.4096 x105
pnovak@slccommercial.com

SLC Commercial
2488 SE Willoughby Blvd
Stuart, FL 34994
772.220.4096 | slccommercial.com


SLC Commercial
Realty & Development

The information contained herein has been obtained from sources believed to be reliable, but no warranty or representation, expressed or implied, is made. All sizes and dimensions are approximate. Any prospective buyer should exercise prudence and verify independently all significant data and property information. This is NOT an offer of sub-agency or co-brokerage.

615 St. Lucie Crescent

607 - 615 NW St. Lucie Crescent, Stuart, FL 34994

Office Building Complex



Jeffrey D. Chamberlin
President/Broker, CCIM, SIOR
772.220.4096 x101
chamberlin@slccommercial.com

Patty And Ken Novak
Broker Associate
772.220.4096 x105
pnovak@slccommercial.com

SLC Commercial
2488 SE Willoughby Blvd
Stuart, FL 34994
772.220.4096 | slccommercial.com


SLC Commercial
Realty & Development

The information contained herein has been obtained from sources believed to be reliable, but no warranty or representation, expressed or implied, is made. All sizes and dimensions are approximate. Any prospective buyer should exercise prudence and verify independently all significant data and property information. This is NOT an offer of sub-agency or co-brokerage.

Office Building Complex



Jeffrey D. Chamberlin
President/Broker, CCIM, SIOR
772.220.4096 x101
chamberlin@slccommercial.com

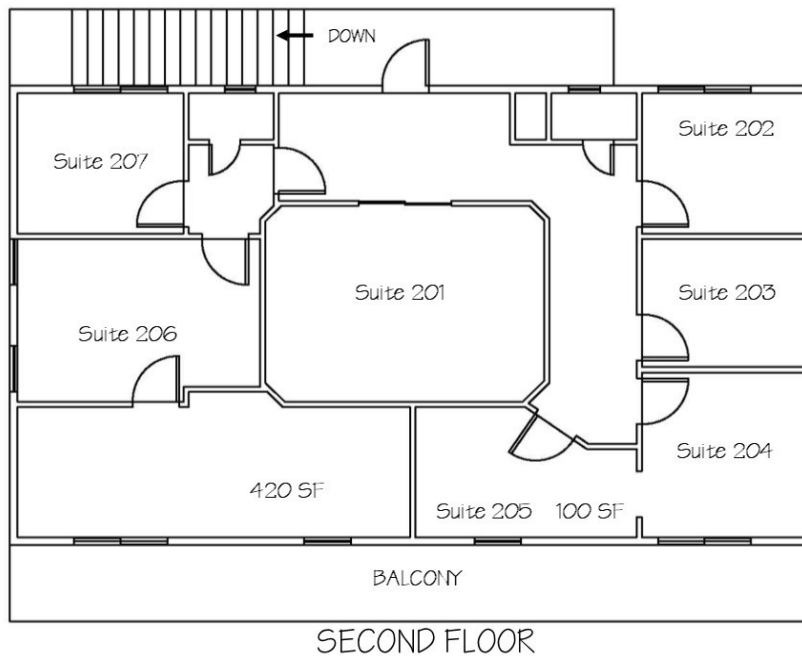
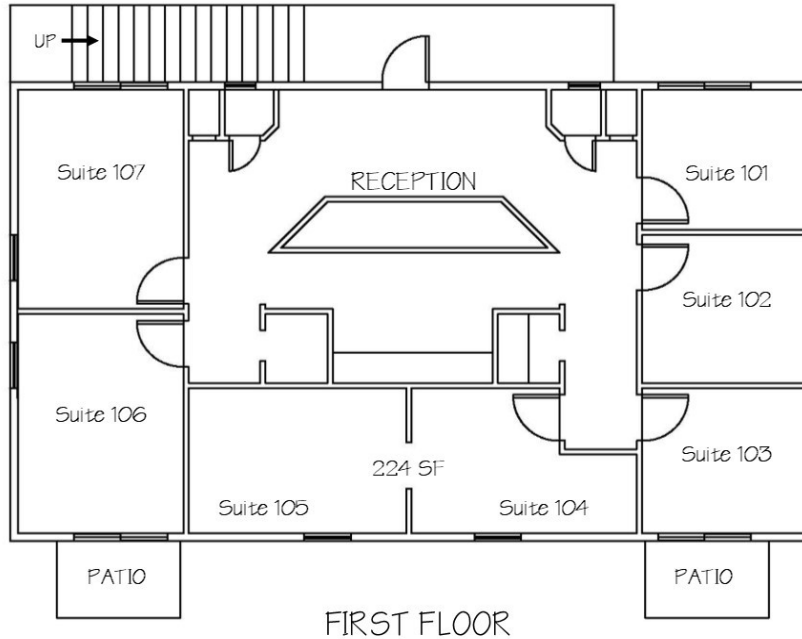
Patty And Ken Novak
Broker Associate
772.220.4096 x105
pnovak@slccommercial.com

SLC Commercial
2488 SE Willoughby Blvd
Stuart, FL 34994
772.220.4096 | slccommercial.com



Office Building Complex

607 ST. LUCIE CRESCENT



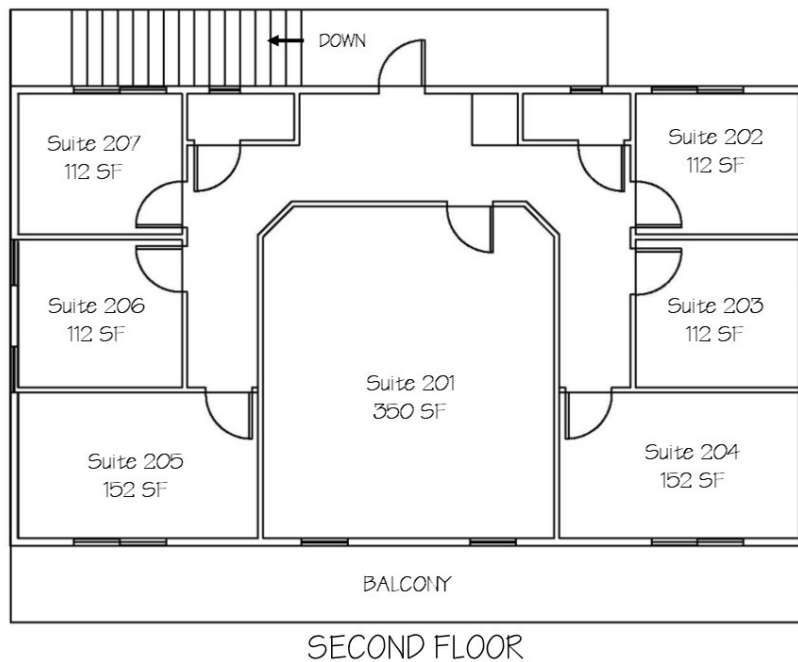
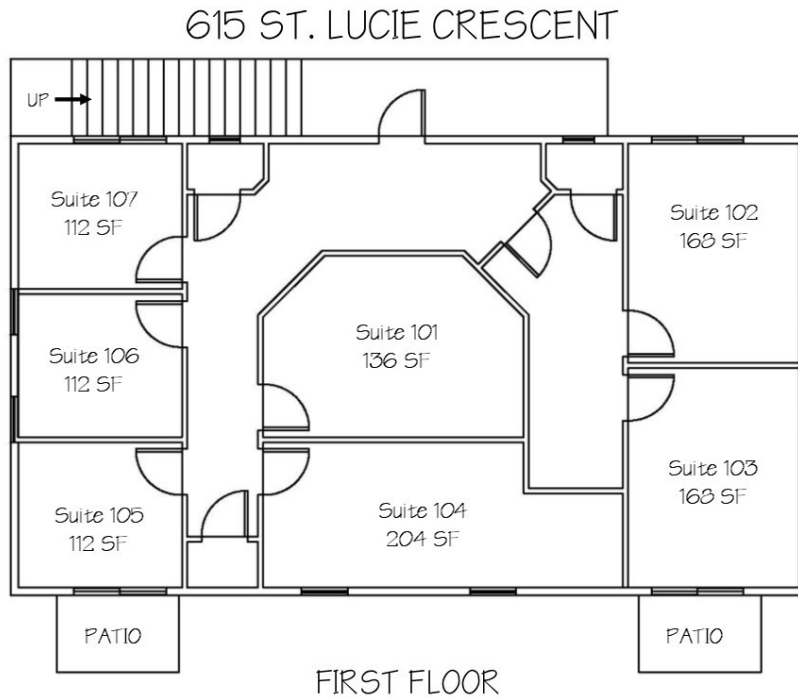
Jeffrey D. Chamberlin
President/Broker, CCIM, SIOR
772.220.4096 x101
chamberlin@slccommercial.com

Patty And Ken Novak
Broker Associate
772.220.4096 x105
pnovak@slccommercial.com

SLC Commercial
2488 SE Willoughby Blvd
Stuart, FL 34994
772.220.4096 | slccommercial.com



Office Building Complex



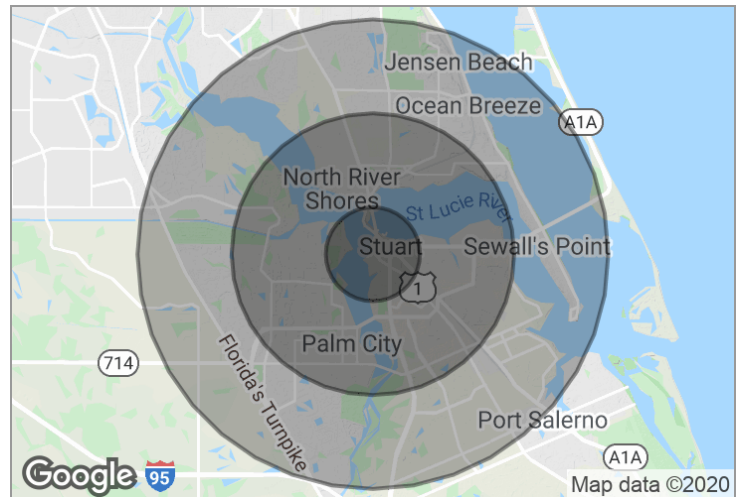
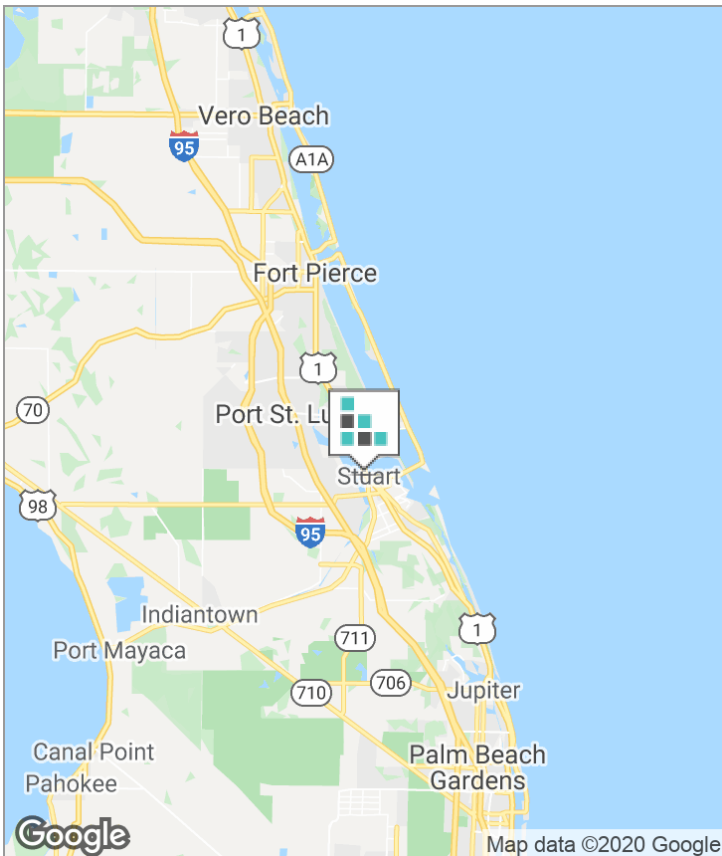
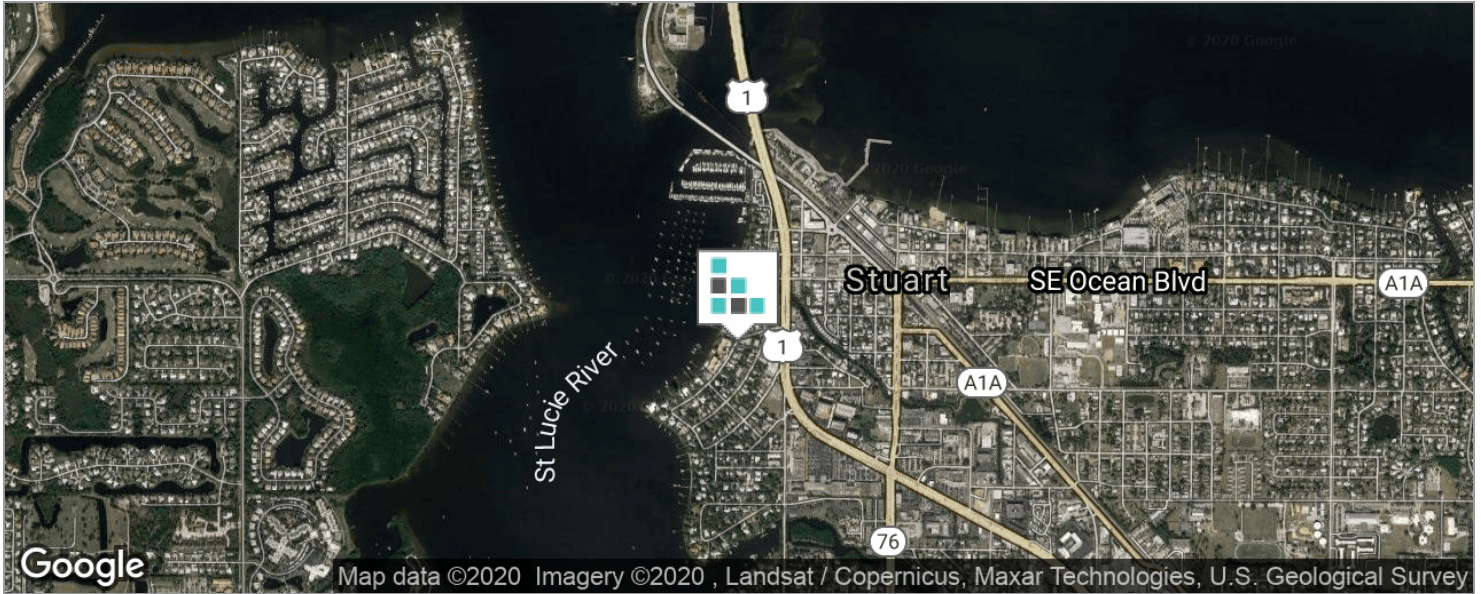
Jeffrey D. Chamberlin
 President/Broker, CCIM, SIOR
 772.220.4096 x101
 chamberlin@slccommercial.com

Patty And Ken Novak
 Broker Associate
 772.220.4096 x105
 pnovak@slccommercial.com

SLC Commercial
 2488 SE Willoughby Blvd
 Stuart, FL 34994
 772.220.4096 | slccommercial.com



Office Building Complex



DEMOGRAPHICS

	1 MILE	3 MILES	5 MILES
Total Population	5,301	45,154	96,643
Total Households	2,434	19,814	40,747
Average HH Income	\$65,696	\$70,174	\$77,745
Average Age	51.0	48.4	47.6

Jeffrey D. Chamberlin
 President/Broker, CCIM, SIOR
 772.220.4096 x101
 chamberlin@slccommercial.com

Patty And Ken Novak
 Broker Associate
 772.220.4096 x105
 pnovak@slccommercial.com

SLC Commercial
 2488 SE Willoughby Blvd
 Stuart, FL 34994
 772.220.4096 | slccommercial.com



The information contained herein has been obtained from sources believed to be reliable, but no warranty or representation, expressed or implied, is made. All sizes and dimensions are approximate. Any prospective buyer should exercise prudence and verify independently all significant data and property information. This is NOT an offer of sub-agency or co-brokerage.

■ Office Building Complex

This presentation package has been prepared by the company representing the property for informational purposes only and does not purport to contain all information necessary to reach a purchase decision.

The information herein has been given by the Owner or other sources believed to be reliable, but it has not necessarily been independently verified by the Company representing the property and neither its accuracy nor its completeness is guaranteed.

This information is subject to errors, omissions, changes, prior sale or withdrawal without notice by the Company representing the property and does not constitute a recommendation, endorsement or advice as to the value for the purchase of any property. Each prospective lessee or purchaser is to rely upon his/her own investigation, evaluation and judgment as to the advisability of leasing or purchasing the property.

Furthermore, any financial information and calculations presented in this analysis are believed to be accurate, but are not guaranteed and are intended for the purposes of projection and analysis only. The user of this financial information contained herein should consult a tax specialist concerning his/her particular circumstances before making any investment.

■ **Jeffrey D. Chamberlin**
President/Broker, CCIM, SIOR
772.220.4096 x101
chamberlin@slccommercial.com

Patty And Ken Novak
Broker Associate
772.220.4096 x105
pnovak@slccommercial.com

SLC Commercial
2488 SE Willoughby Blvd
Stuart, FL 34994
772.220.4096 | slccommercial.com

