

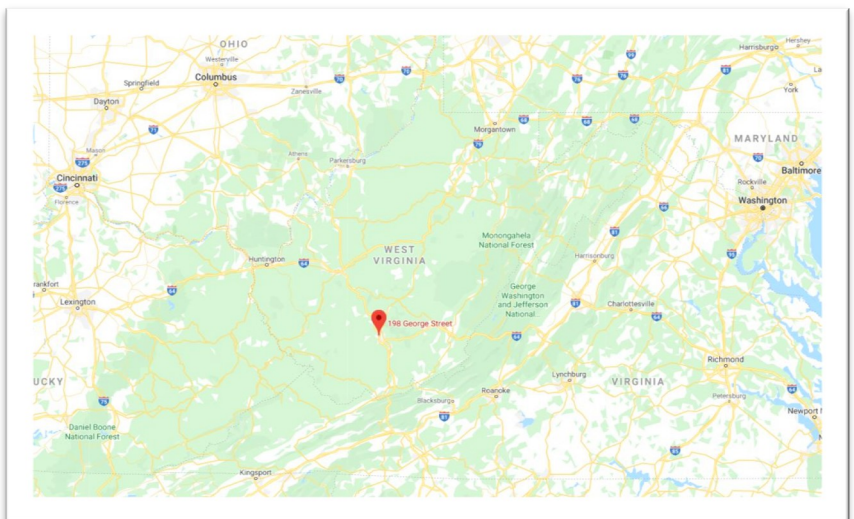


Office/Warehouse For Sale 198 George St Beckley WV 25801



Property Details

- Sales Price: **\$850,000**
- Building Size: 15,256 Sq Ft
- Built: 1985
- Renovated 2005 & 2012
- Total Land Size: 0.832 Acres or 36,721 Sq Ft
- Property Use: Office/Warehouse
- Zoning: AS-1
- Parcel ID: 41-11-026C-0027-0001
- 2019 Taxes Est: \$12,457



Property Description

The Former Citizens Conservation Corp of West Virginia office/warehouse building is ideally located in Harper Industrial Park in Beckley West Virginia. Access is easily available to the property from the WV turnpike interstate 77/64 at the Harper Road exit or from State Road 3. You and your employees will enjoy the great restaurants and shopping that is only 5 minutes away. This very well maintained building is move in ready. Go see it and you will agree! For more information about this property and to setup your personal showing please contact us.

KEN PIERCE, CCIM CIPS
Broker-Owner-REALTOR
ken@piercemountainrealty.com
304.205.9090



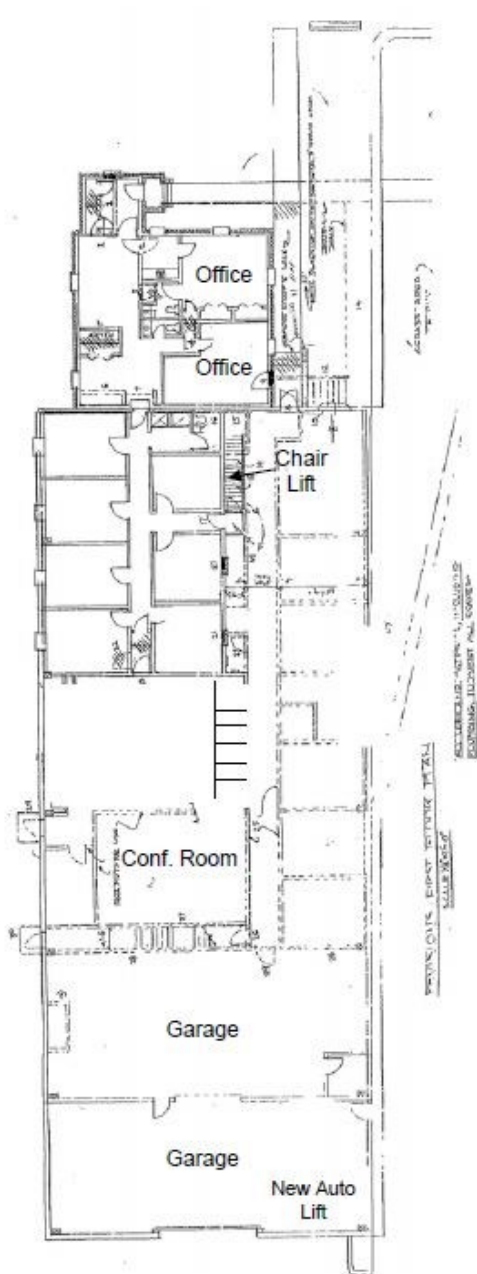
Commercial • Land • Investment • Development

The information listed above has been obtained from the owner and public sources we believe to be reliable. Pierce Mountain Realty makes no guarantees, representations or warranties of any kind, expressed or implied regarding the content, accuracy and reliability of this information. All information should be verified before purchase or lease. This offer is subject to errors, omissions and can be withdrawal without notice.

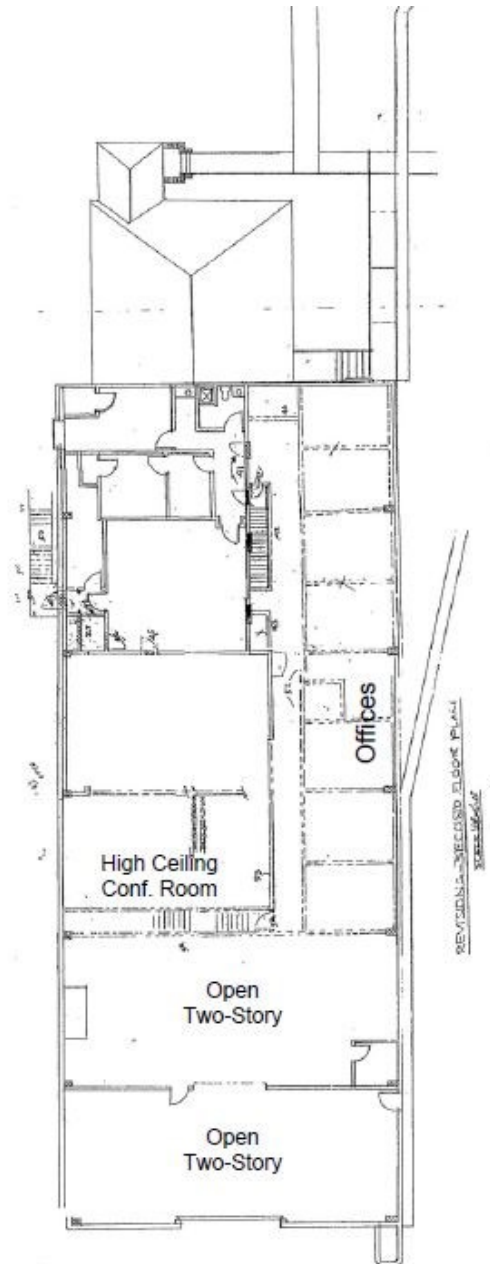
Pierce Mountain Realty is a DBA of Pierce Florida Realty LLC • 1431 Royal Saint George Drive Orlando, FL 32828 • Tel 407-567-9077



Office/Warehouse For Sale
198 George St
Beckley WV 25801



First Floor



Second Floor

Commercial • Land • Investment • Development

The information listed above has been obtained from the owner and public sources we believe to be reliable. Pierce Mountain Realty makes no guarantees, representations or warranties of any kind, expressed or implied regarding the content, accuracy and reliability of this information. All information should be verified before purchase or lease. This offer is subject to errors, omissions and can be withdrawal without notice.

Pierce Mountain Realty is a DBA of Pierce Florida Realty LLC • 1431 Royal Saint George Drive Orlando, FL 32828 • Tel 407-567-9077



Office/Warehouse For Sale
198 George St
Beckley WV 25801



Commercial • Land • Investment • Development

The information listed above has been obtained from the owner and public sources we believe to be reliable. Pierce Mountain Realty makes no guarantees, representations or warranties of any kind, expressed or implied regarding the content, accuracy and reliability of this information. All information should be verified before purchase or lease. This offer is subject to errors, omissions and can be withdrawal without notice.

Pierce Mountain Realty is a DBA of Pierce Florida Realty LLC • 1431 Royal Saint George Drive Orlando, FL 32828 • Tel 407-567-9077



Office/Warehouse For Sale
198 George St
Beckley WV 25801



Commercial • Land • Investment • Development

The information listed above has been obtained from the owner and public sources we believe to be reliable. Pierce Mountain Realty makes no guarantees, representations or warranties of any kind, expressed or implied regarding the content, accuracy and reliability of this information. All information should be verified before purchase or lease. This offer is subject to errors, omissions and can be withdrawal without notice.

Pierce Mountain Realty is a DBA of Pierce Florida Realty LLC • 1431 Royal Saint George Drive Orlando, FL 32828 • Tel 407-567-9077