

**FOR
SALE**

1.5 AC HAINES CITY COMMERCIAL

2200 South 22nd Street, Haines City, FL 33844



ABOUT THE PROPERTY

SIZE 1.5 acres

PRICE \$50,000 **SOLD!**

AREA Intersection of S 22nd Street and Norma Avenue

ZONING Property (DOR) Use Code Vacant Commercial (Code: 1000)

FRONTAGE 210' ± on S 22nd Street
305' ± on Norma Avenue

DETAILS Located in the heart of quaint Haines City, ready for development. Directly across the street from Shelley S. Boone Middle school and adjacent to apartments as well as many single family homes. Within a mile of this parcel is a shopping center, churches and Haines City High School.

33844 DEMOGRAPHICS (US CENSUS 7/2018)

POPULATION

25,091

MEDIAN HH INCOME

\$40,241

AVERAGE DAILY TRAFFIC COUNTS (2018)

- 1** 12,000 E on Hinson Ave (17th St to S 30th St)
- 2** 2,600 E on Grace Ave (17th St to S 30th St)
- 3** 6,600 N on S 30th St (Lake Marion Rd to E Hinson Ave)

MAURY L. CARTER & ASSOCIATES, INC.

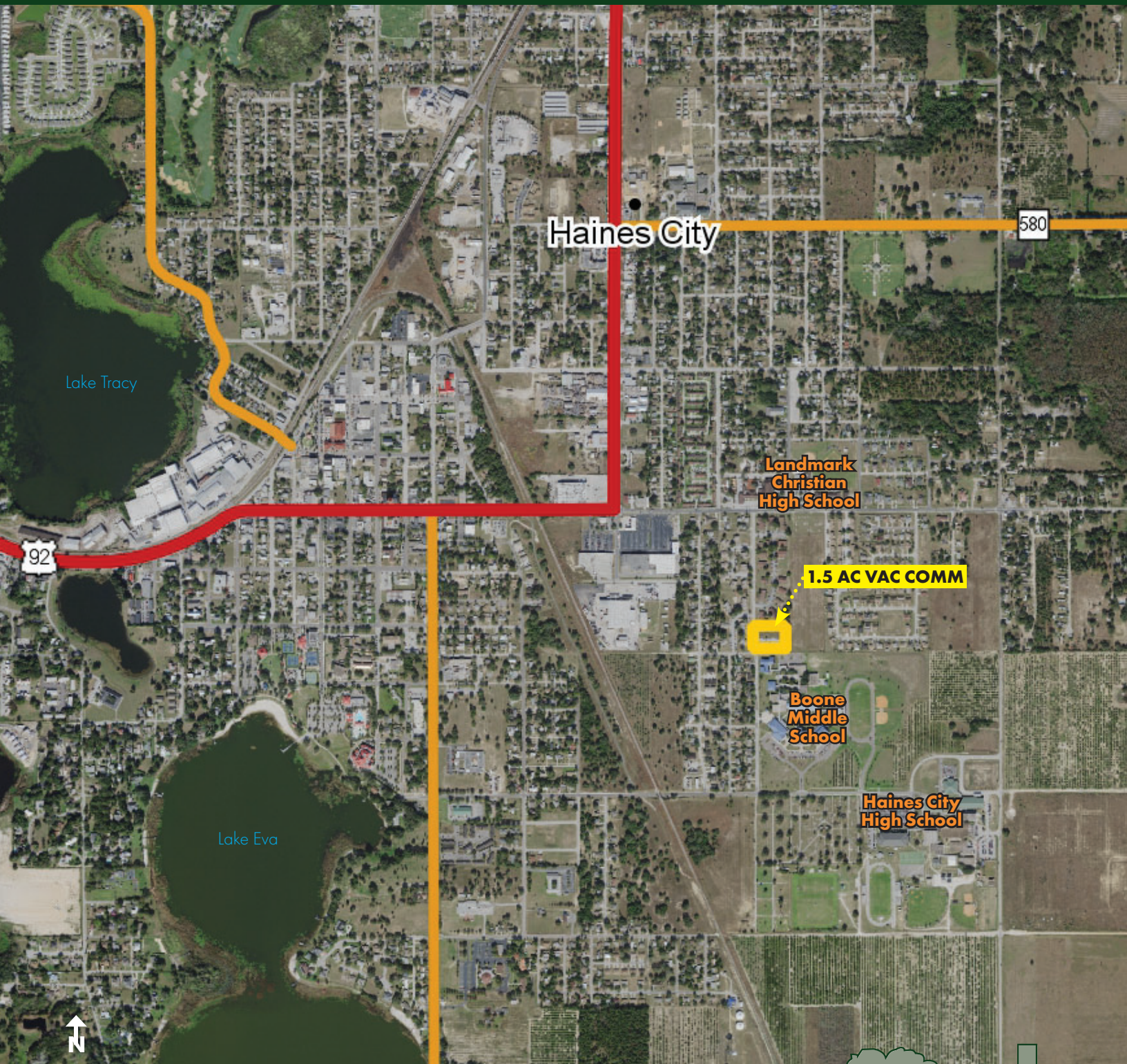
Licensed Real Estate Brokers | www.maurycarter.com | 407-422-3144



**FOR
SALE**

3.12 AC APOPKA C-1 COMMERCIAL

2961 Plymouth Sorrento Rd, Apopka, FL 32712



REGIONAL MAP

MAURY L. CARTER & ASSOCIATES, INC.

Licensed Real Estate Brokers | www.maurycarter.com | 407-422-3144

