

Wilton Manors Residential Lot for Sale

For Sale \$185,000
606 NE 27 St.
Wilton Manors, FL 33334



FOR SALE	0.1042 acres / 4,538 Sq. Ft.			
DESCRIPTION	Unique opportunity to purchase vacant 60' x 75' residential lot in the heart of popular Wilton Manors. Walking distance to numerous shops and restaurants. Plans in place for a 1,369 sq. ft. one story single family home. Zoned RM-16 which has a maximum density of 16 dwelling units per acre. This district is intended to provide areas within the City for high-density multifamily residential structures and accessory structures.			
PROPERTY VIDEO	https://www.youtube.com/embed/BEHZJVQZTFo?rel=0			
LOCATION	Oakland Park Blvd South on NE 6 Ave to right on NE 27 St. On south side of NE 27 St.			
PRICING	\$185,000 or \$40.76 / Sq. Ft.			
ZONING & FOLIO NUMBERS	RM-16 Folio Numbers 4942 26 09 0180			
DEMOGRAPHICS 2020		1 mile	3 mile	5 mile
	HH Population:	23,987	156,033	365,516
	Average HH Income:	\$67,426	\$82,496	\$75,353

Disclaimer: This offering subject to errors, omissions, prior sale or withdrawal without notice.

CAMPBELL & ROSEMURGY
COMMERCIAL REAL ESTATE

FOR MORE INFORMATION:

John D. McQueston

john@johnmcqueston.com • 561-706-7721 (cell)

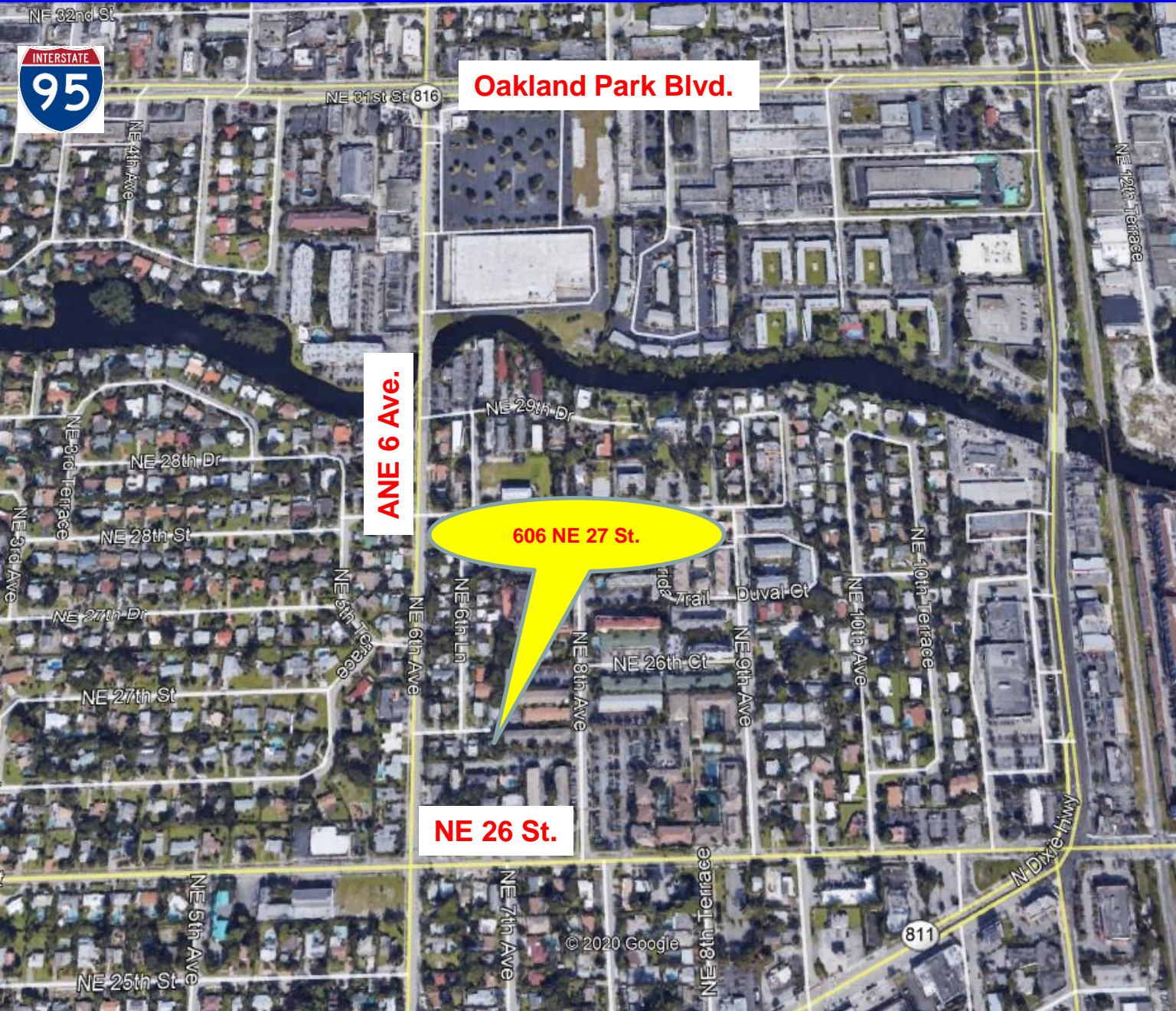
www.johnmcqueston.com

1233 E. Hillsboro Blvd
Deerfield Beach, FL 33441

954.427.8686 T.
954.427.0117 F.

Location Map

For Sale \$185,000
606 NE 27 St.
Wilton Manors, FL 33334



Disclaimer: This offering subject to errors, omissions, prior sale or withdrawal without notice.

CAMPBELL & ROSEMURGY
COMMERCIAL REAL ESTATE

FOR MORE INFORMATION:

John D. McQuestion

john@johnmcquestion.com • 561-706-7721 (cell)

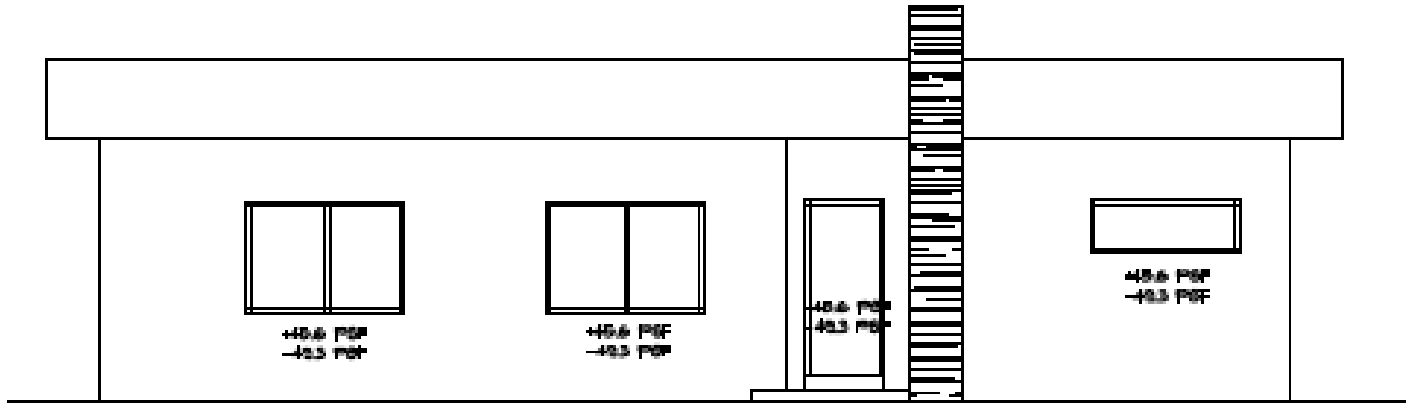
www.johnmcquestion.com www.campbellandrosemergycommercial.com

1233 E. Hillsboro Blvd
Deerfield Beach, FL 33441

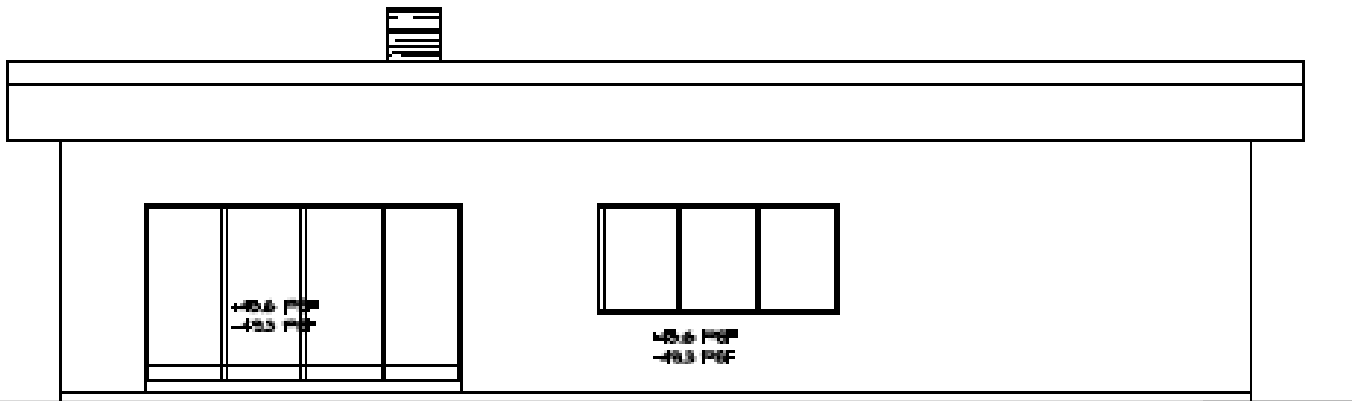
954.427.8686 T.
954.427.0117 F.

Elevations

For Sale \$185,000
606 NE 27 St.
Wilton Manors, FL 33334



FRONT / NORTH



REAR / SOUTH

Disclaimer: This offering subject to errors, omissions, prior sale or withdrawal without notice.

CAMPBELL & ROSEMURGY
COMMERCIAL REAL ESTATE

FOR MORE INFORMATION:

John D. McQuestion

john@johnmcquestion.com • 561-706-7721 (cell)

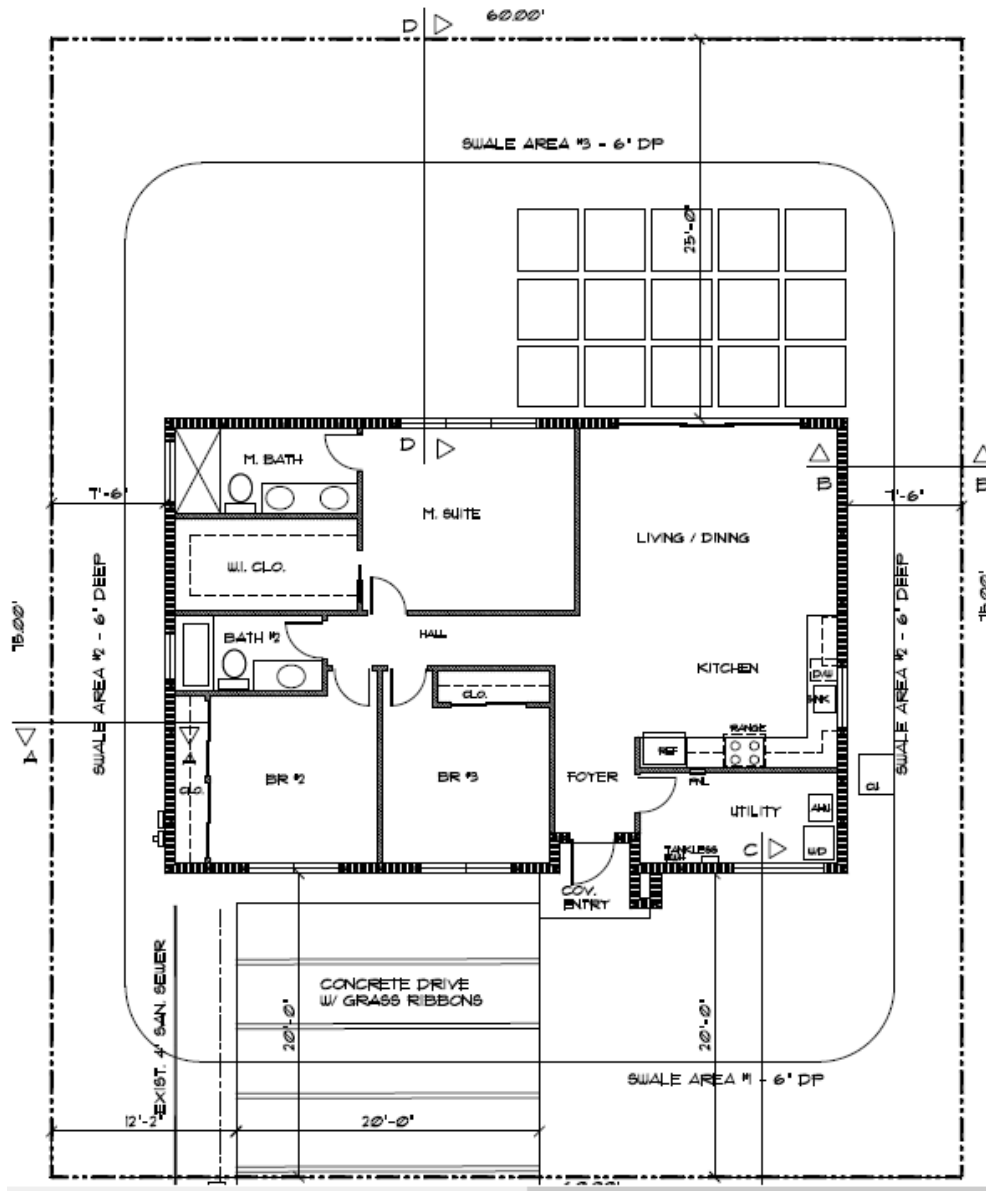
www.johnmcquestion.com www.campbellandrosemergycommercial.com

1233 E. Hillsboro Blvd
Deerfield Beach, FL 33441

954.427.8686 T.
954.427.0117 F.

Building Plans

For Sale \$185,000
606 NE 27 St.
Wilton Manors, FL 33334



Disclaimer: This offering subject to errors, omissions, prior sale or withdrawal without notice.

CAMPBELL & ROSEMURGY
COMMERCIAL REAL ESTATE

FOR MORE INFORMATION:

John D. McQuestion

john@johnmcquestion.com • 561-706-7721 (cell)

www.johnmcquestion.com www.campbellandrosemergycommercial.com

1233 E. Hillsboro Blvd
Deerfield Beach, FL 33441

954.427.8686 T.
954.427.0117 F.