

**FOR SALE - Professional/Medical Office**  
**1620 Medical Lane**  
**Fort Myers, FL 33907**

**Major Price Reduction: \$1,750,000**

**Total Building Size:** 27,687± SF (2 buildings) | 1.66± Acres

**Building 1 (Multi-Story):** 26,342± SF

**Building 2 (Annex):** 1,525± SF

**Strap #:** [02-45-24-P2-00300.0050](#)

**Year Built:** 1974

**Location:** One block off Colonial Blvd., near Midpoint Bridge

**2019 AADT:** 56,600±



The Colonial Executive Center is located between Summerlin Road & US-41. Excellent access to Midpoint Bridge leading to Cape Coral, just minutes to I-75 and the SW FL International Airport.

- Zoning: Commercial Office
- Current tenants include AmeriPath & Quest Diagnostics
- Office/Medical Investment
- 86± Parking Spaces
- Great building for Accountants, Medical Offices, Real Estate Professionals or any growing business.



**COLEEN FRYE, ACP**  
**COMMERCIAL DIVISION**

Direct: (239) 689-2239  
[CFRYE@REMAX.NET](mailto:CFRYE@REMAX.NET)



**MICHAEL J. FRYE, CCIM|CEO**  
 Hall of Fame, Lifetime Achievement  
**COMMERCIAL DIVISION**  
 Direct: (239) 281-0441  
[MFRYE@CCIM.NET](mailto:MFRYE@CCIM.NET)



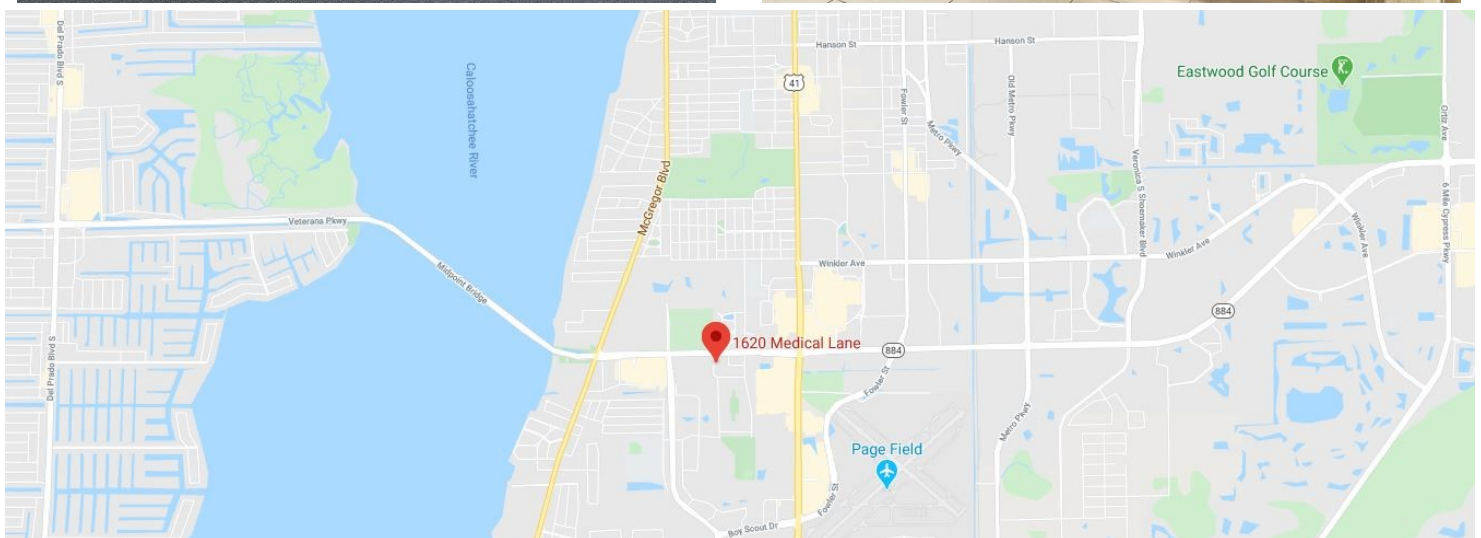
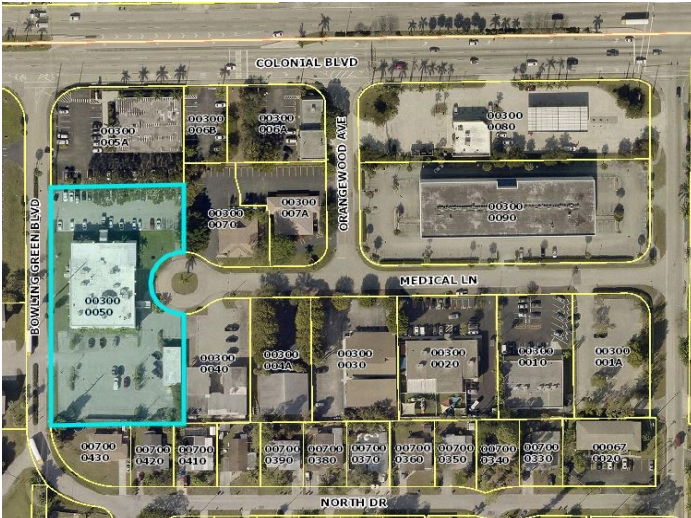


**FOR SALE**  
**Professional Office Building**  
**1620 Medical Lane**  
**Fort Myers, FL**



**Coleen Frye, ACP**  
**Direct: (239) 689-2239**

**Michael J. Frye, CCIM**  
**Direct: (239) 281-0441**



**7910 Summerlin Lakes Dr., Fort Myers, FL 33907 | (239) 489-0444**

**RE/MAX Realty Group makes no guarantees, warranties or representations as to the completeness or accuracy thereof. This property presentation is submitted subject to errors, omissions, change of price or conditions, prior sale or lease, or withdrawals without notice.**