

BEACHWAVE TITUSVILLE

GARDEN STREET/A MAX BREWER MEMORIAL PARKWAY
TITUSVILLE, FL 32796



1,018 - 5,000 SF



RETAIL FOR LEASE



CALL FOR RATES

PROPERTY INFORMATION

Lease Rate:	Call For Rates
Min Size Available:	1,018 SF
Max Size Available:	5,000 SF
Total GLA:	33,600 SF
Garden Street AADT:	13,100 CPD

Join Beachwave Beachwear with direct frontage on Garden Street directly leading onto A Max Brewer Memorial Parkway, the gateway to the Canaveral National Seashore with approximately 1.5M visitors per year.

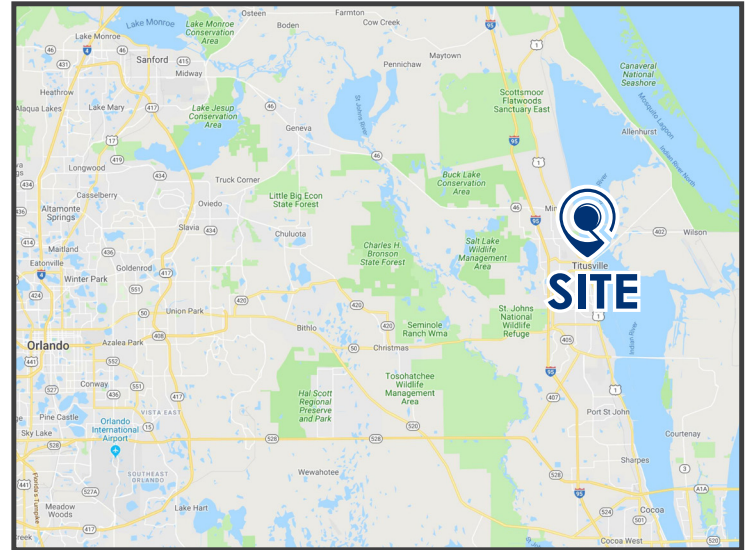
Highly visible with Harbor Pointe 210 luxury condominiums within walking distance.

1,018 SF street retail space available.

3,435 SF first floor restaurant space available.

Located in the heart of the expanding \$2T space industry, including SpaceX, NASA, Kennedy Space Center and many more.

5,000 SF Tiki Bar available on 2nd floor adjoining observatory with views of rocket launches.



DEMOGRAPHICS

	1-MILE	3-MILES	5-MILES
Total Population	4,537	27,520	54,200
Five-Year Increase	2.6%	2.3%	2.1%
Avg Household Income	\$43,410	\$52,202	\$60,462
Total Households	2,031	12,227	22,690
Daytime Employees	4,244	13,564	20,095

(Applied Geographic Solutions 2019)

LQWEST.COM/BEACHWAVE-TITUSVILLE



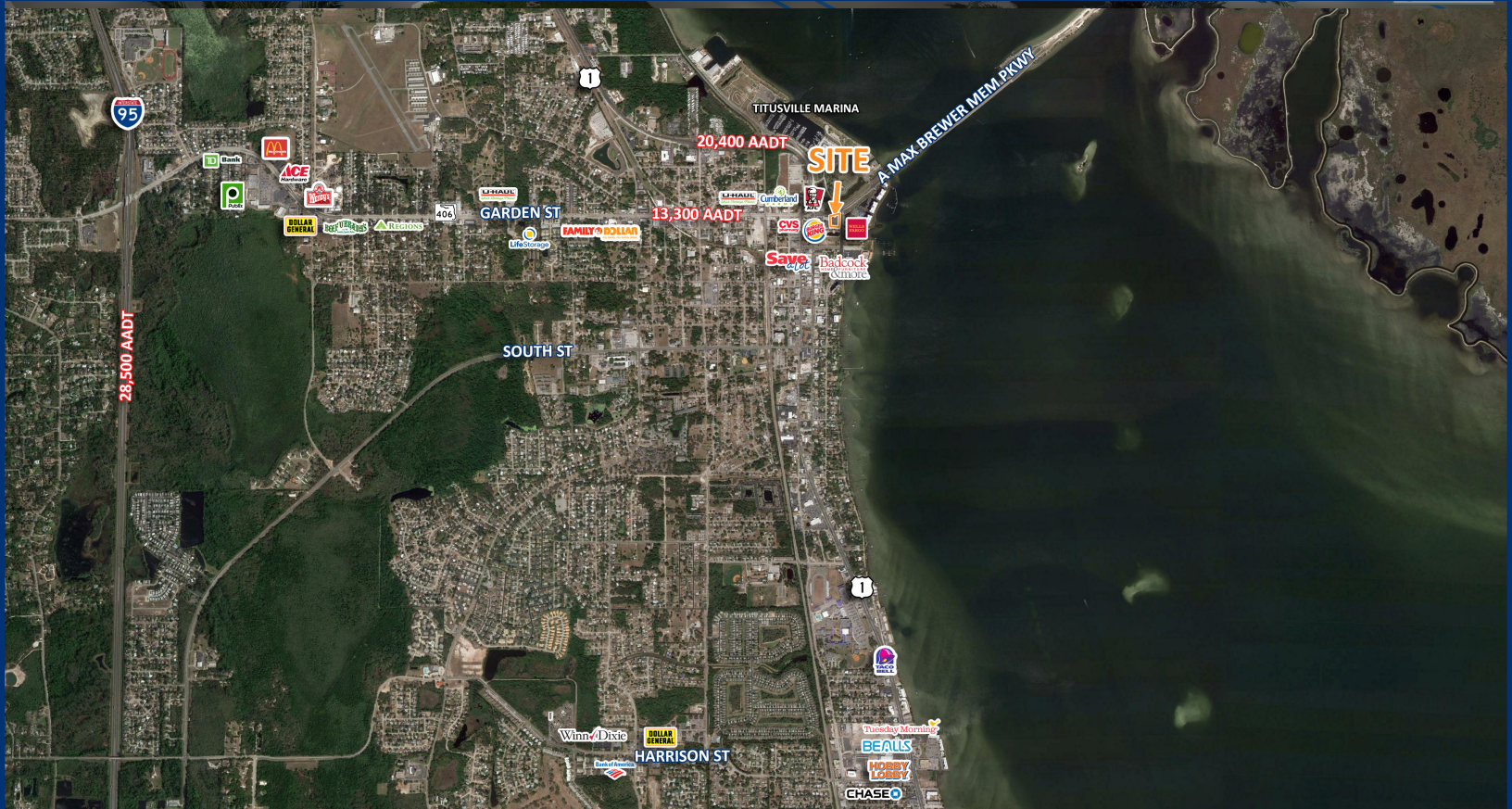
MICHAEL E DREYER, CCIM, ALC
D: 321.777.7743 | M: 321.508.6422
michael.e.dreyer@gmail.com

EVA ROYAL, SR. ASSOCIATE
D: 407.705.2217 | M: 407.421.3532
eroyal@lqwest.com | [My Listings](#)

JULIA SOSA, PRINCIPAL
D: 407.775.4358 | M: 407.257.8246
jsosa@lqwest.com | [My Listings](#)

LANDQWEST COMMERCIAL REAL ESTATE SERVICES | 423 S. KELLER ROAD, SUITE 400, ORLANDO, FL 32810





423 S. Keller Road, Suite 400, Orlando, FL 32810
MAIN: 407.660.7500 @ FAX: 407.660.7600 @ LQWEST.COM

Information obtained from owner(s) or other sources deemed reliable. We have no reason to doubt its accuracy, but cannot guarantee it. All properties subject to change or withdrawal without notice.