



CHRISTIANSEN

COMMERCIAL REAL ESTATE

License 134



DEVELOPABLE LAND FOR SALE

SOUTH AND INTERIOR OF KM 3.6, STATE ROAD PR-702, PALMAREJO WARD, COAMO, PUERTO RICO

PROPERTY DETAILS

Vacant land parcel consisting of approximately twelve (12) "cuerdas" and/or 47,311.92 square meters, representing the remnant of the Quintas de Coamo residential development, located south and interior of kilometer 3.6 of State Road PR-702 within the Palmarejo Ward of the municipality of Coamo.

LAND AREA

12 cuerdas and/or 47,311.92 square meters

ZONING

AD (Developed Areas)

COORDINATES

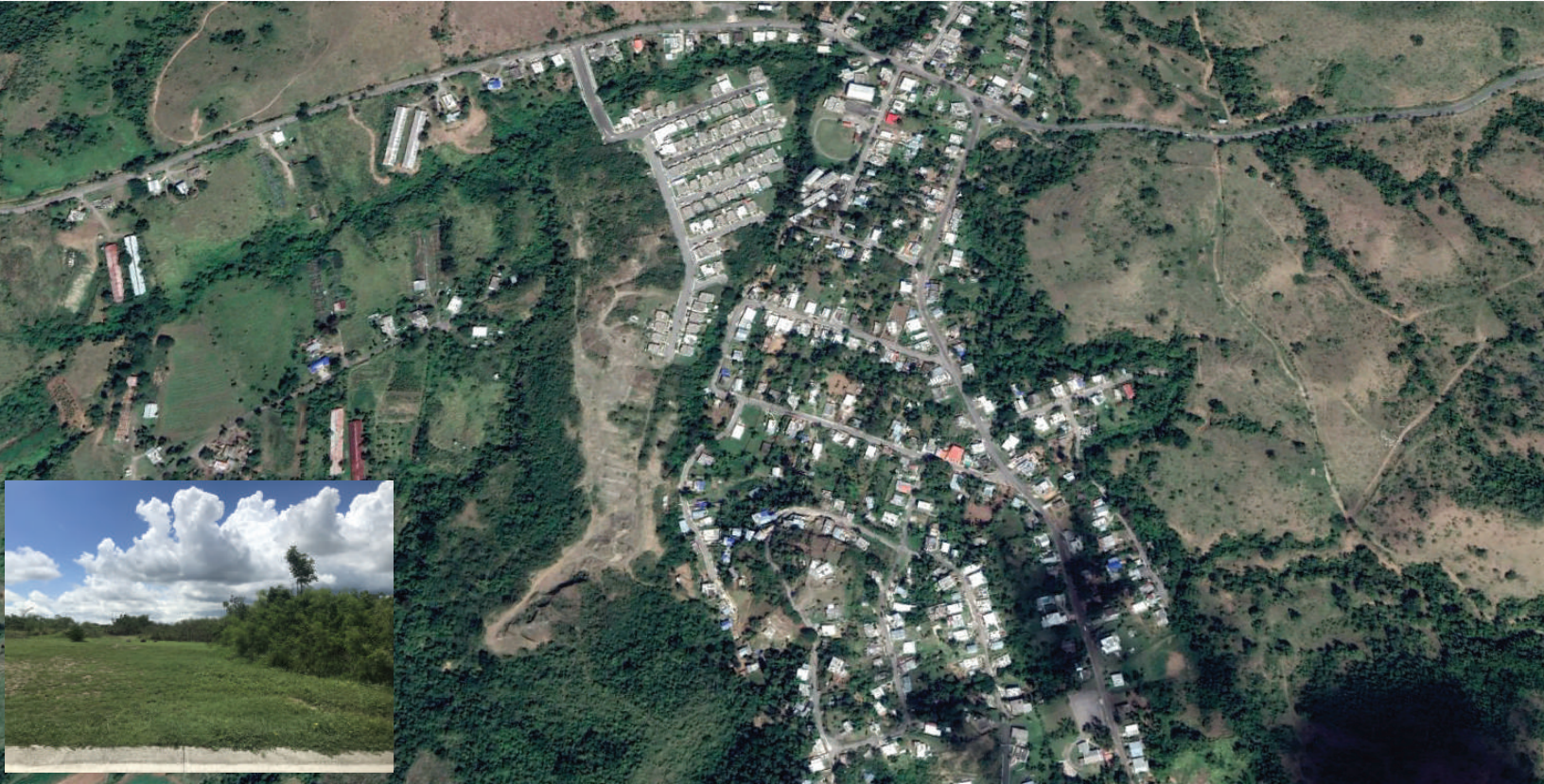
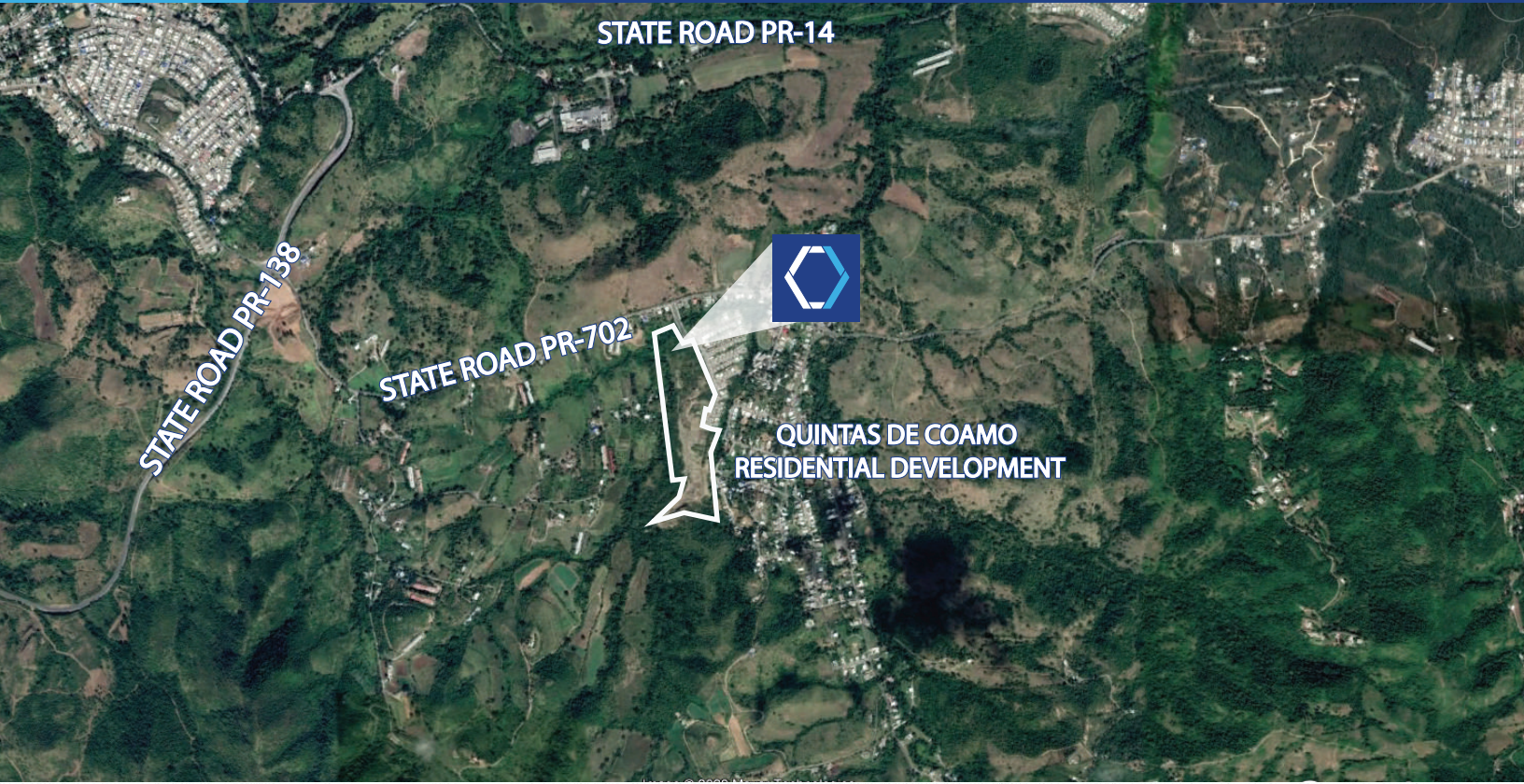
18.04210 N, -66.19410 W

TOPOGRAPHY

Mostly level

FOR MORE INFORMATION VISIT WWW.CHRISTIANSENCOMMERCIAL.COM

SOUTH AND INTERIOR OF KM 3.6, STATE ROAD PR-702, PALMAREJO WARD, COAMO



American International Plaza
250 Muñoz Rivera Avenue Suite 350
Hato Rey, Puerto Rico 00918
www.christiansencommercial.com
787-778-7000



CAMERA SCAN FOR MORE DETAILS