

Mac Martin, Broker

863-990-2322 Cell

## 99+/- Acres

- Hwy 70 Frontage
- Commercial & AG Land Use
- Possible PUD
- Cleared
- High and Dry
- One mile from Commercial Center and Lodging

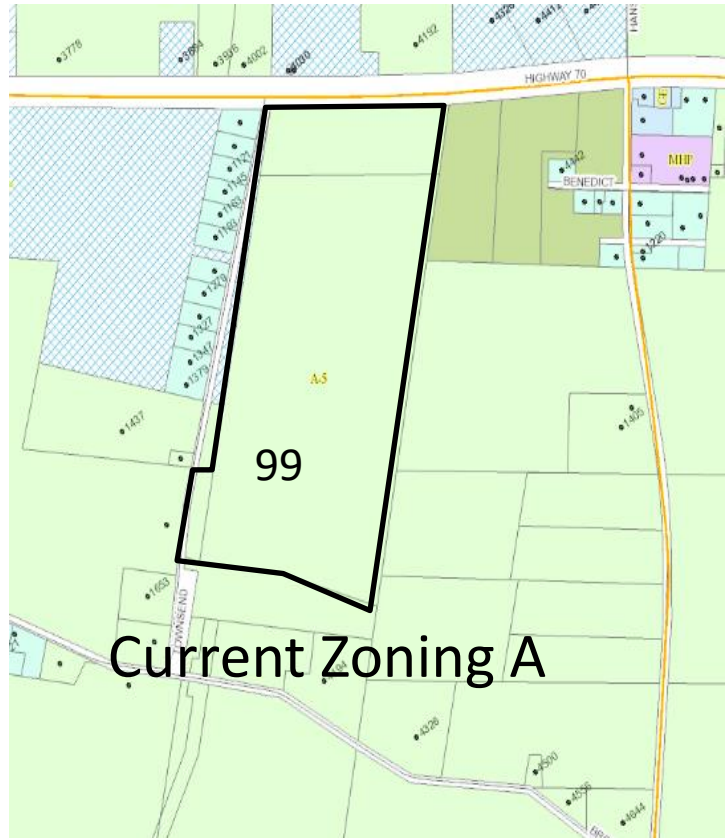


Mac Martin, Broker

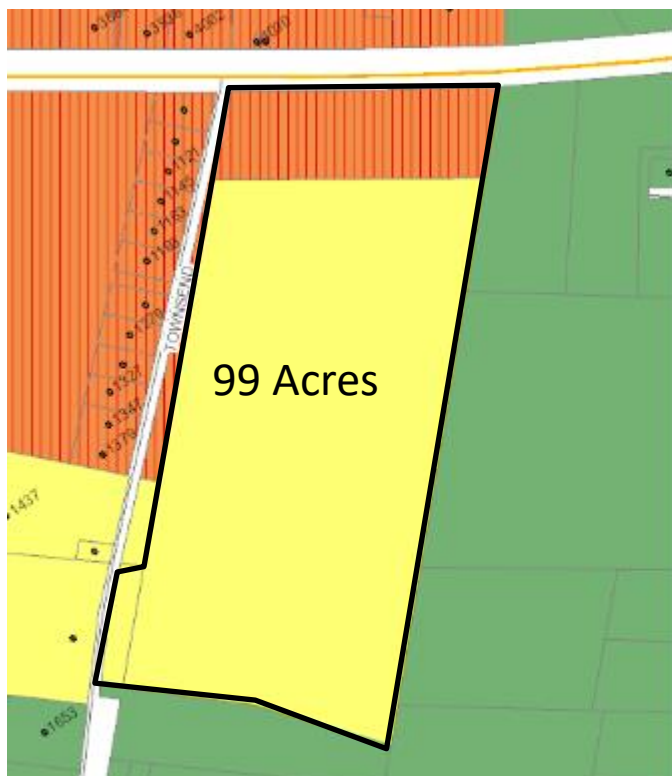
863-990-2322 Cell

## 99+/- Acres

- Hwy 70 Frontage
- Commercial & AG Zoning
- Possible PUD
- Cleared
- High and Dry
- One mile from Commercial Center and Lodging



Current Zoning A



Streets

Major Roads

2040 Interim Future Land Use

- Preservation
- Rural/Agriculture
- Low Density Residential
- Medium Density Residential
- Neighborhood Mixed Use
- Employment Center
- Commercial
- Urban Center Mixed Use
- Public Land/Institutional
- Electrical Generating Facility

Future Land Use:  
Neighborhood Mixed Use and  
Low Density Residential