

408 SE 24th ST., Ruskin, FL 33570

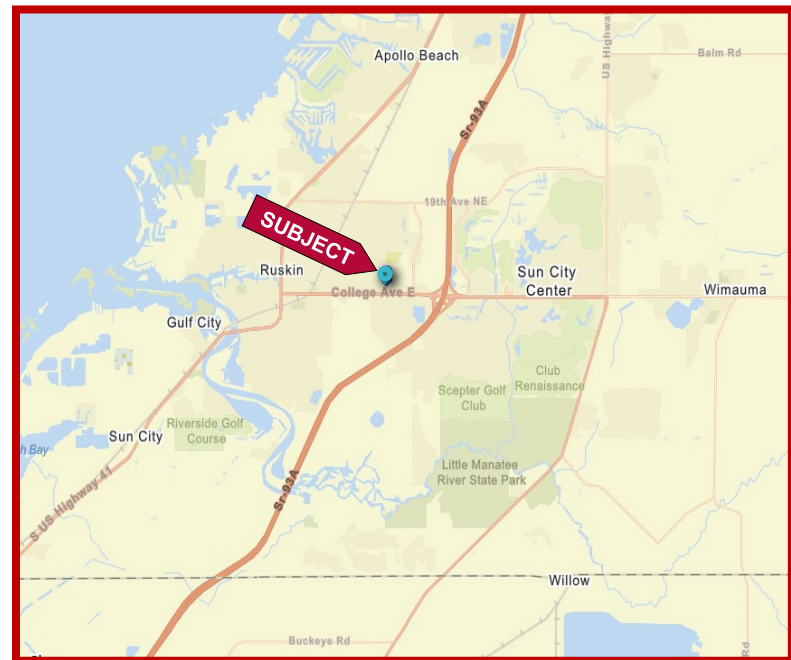
## VACANT PARCEL



## FEATURES

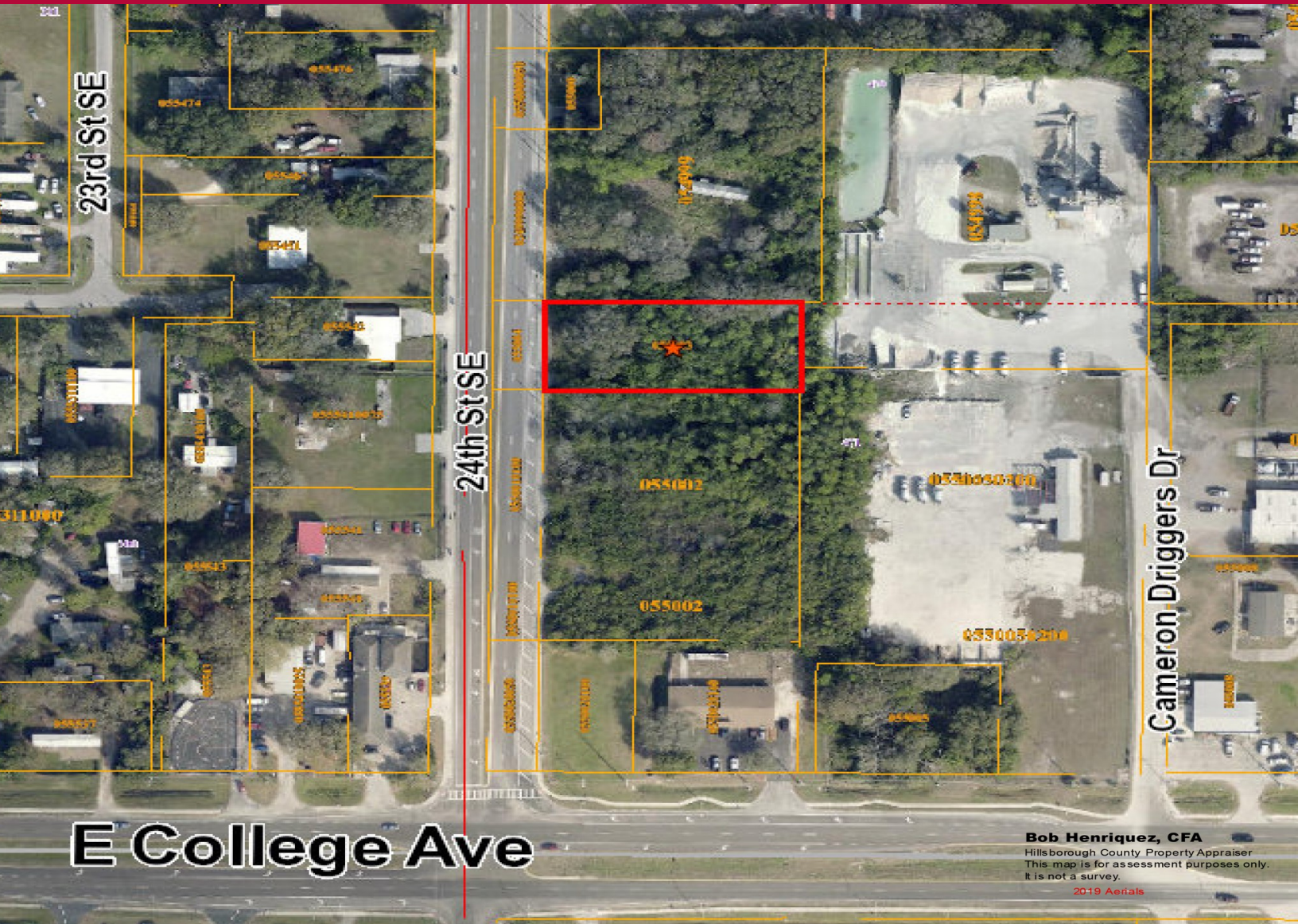
- ❖ .64 Acres (MOL)
- ❖ 110' LF Frontage on SE 24th St. x 255' LF depth
- ❖ Curb Cut on SE 24th ST
- ❖ Unincorporated Hillsborough County Zoning:
  - \* AS—1
  - \* Future Land Use SMU-6 (Up to six units/per acre with approved "PD")
- ❖ Property Use: Vacant Residential
- ❖ Parcel ID# U-10-32-19-IUS-000000-00471.3
- ❖ Folio #055003-0000
- ❖ Flood Zone: X
- ❖ 2019 Real Estate Taxes: \$349
- ❖ **ASKING PRICE: \$69,695**

## LOCATION MAP





408 SE 24th Street, Ruskin, FL 33470



**Bob Henriquez, CFA**  
Hillsborough County Property Appraiser  
This map is for assessment purposes only.  
It is not a survey.  
2019 Aerials

