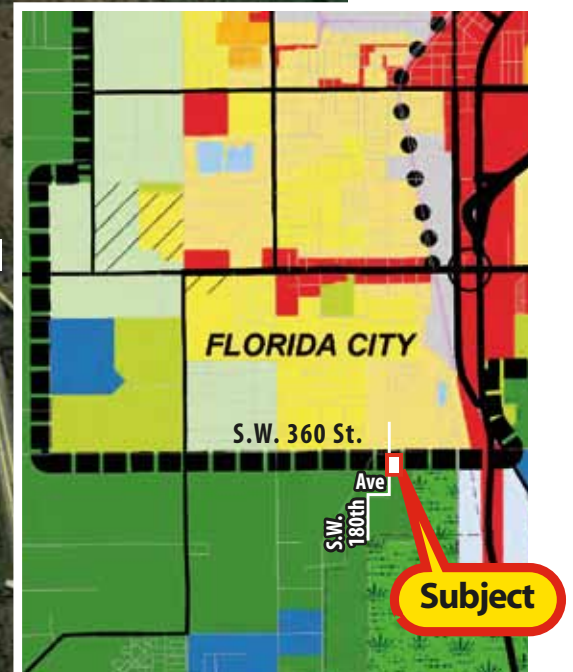
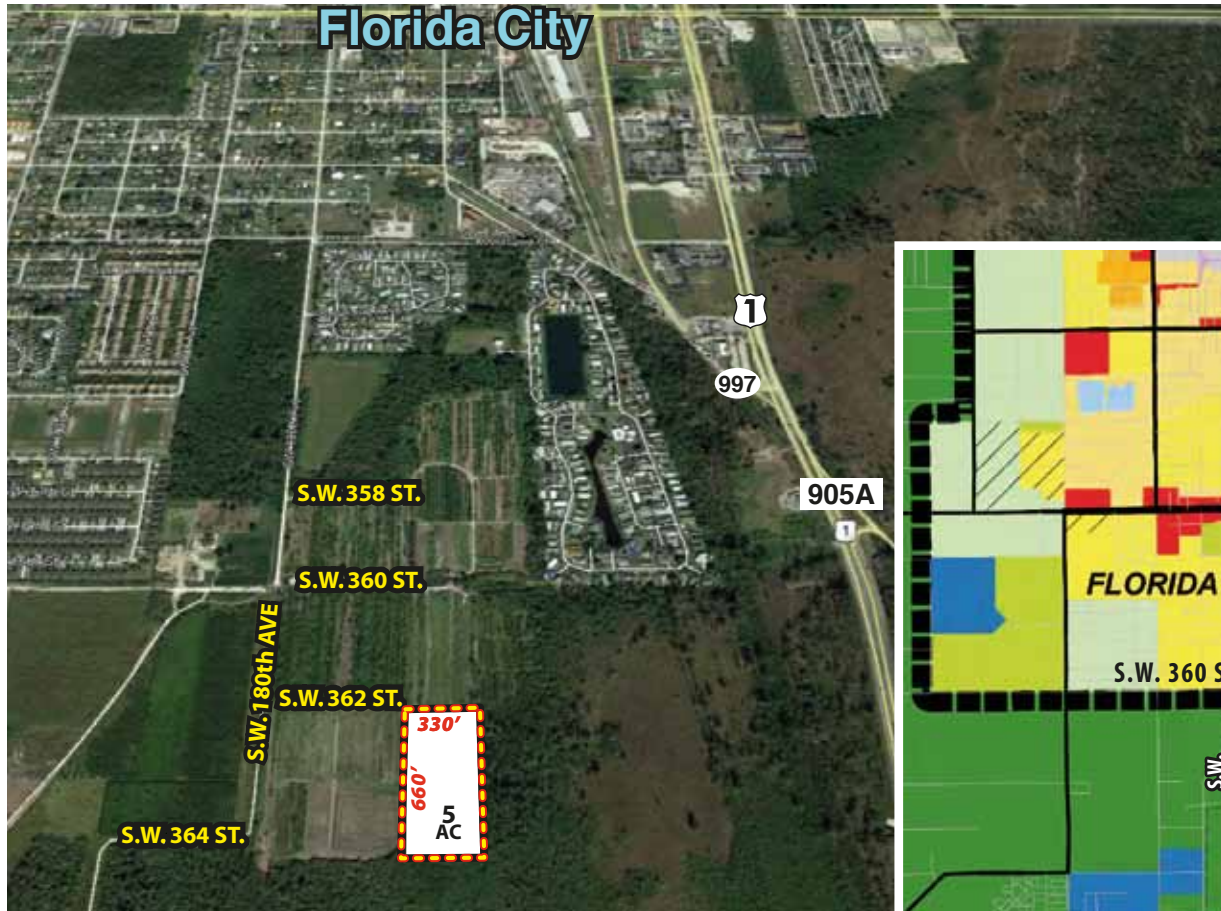


5 AC NEAR UDB BORDER - ALL UTILITIES

***** AG EXEMPT - LOW TAXES - TREE FARM *****

17850 SW 362 Street, Miami, FL 33034
Miami Dade County Folio #30-7836-000-0010(S)



MDC-Comprehensive Development Master Plan

- Water, sewer, 3-phase electric within 1,320 linear feet. Paved road at intersection of SW 360 Street & SW 180 Avenue. Within 660 feet of the Miami Dade County Urban Development Boundary line and City of Florida City municipal boundaries.
- \$60,000 down, 20-year financing at negotiated rate from Farm Credit of Homestead: Martha Kessell: 305-248-6080.

RECENTLY APPRAISED VALUE:

\$185,000



Rick

RICK SWENTEK, P.A., A.L.C.

305.453.0109

Cell/Text: 305.773.5363

rickswen@bellsouth.net



florida1realtyinc.com

103400 Overseas Hwy. Suite 250-D, Key Largo, FL 33037