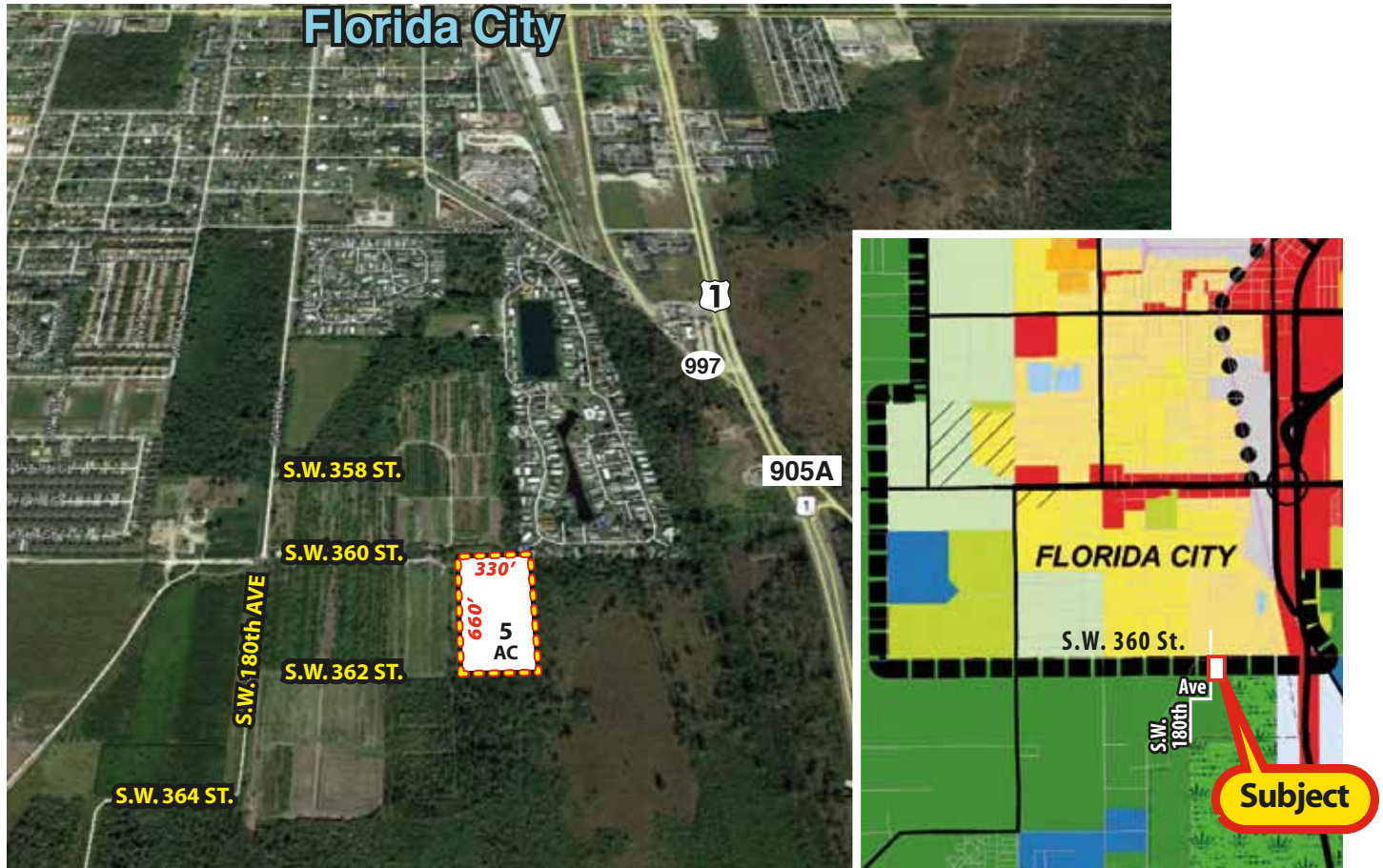


# 5 AC AT UDB BORDER - ALL UTILITIES

**\*\*\* AG EXEMPT - LOW TAXES - TREE FARM \*\*\***

**17800 SW 360 Street, Miami, FL 33034**  
**Miami Dade County Folio #30-7836-000-0010(N)**



MDC-Comprehensive Development Master Plan

- Water, sewer, 3-phase electric, paved road at intersection of S.W. 360 Street & S.W. 180 Avenue. Adjacent to the Miami-Dade County Urban Development Boundary line and City of Florida City municipal boundaries.
- \$60,000 down, 20-year financing at negotiated rate from Farm Credit of Homestead: Martha Kessell: 305-248-6080.

RECENTLY APPRAISED VALUE:

**\$185,000**



*Rick*

**RICK SWENTEK, P.A., A.L.C.**

**305.453.0109**

**Cell/Text: 305.773.5363**

[rickswen@bellsouth.net](mailto:rickswen@bellsouth.net)



[florida1realtyinc.com](http://florida1realtyinc.com)

103400 Overseas Hwy. Suite 250-D, Key Largo, FL 33037