



CHRISTIANSEN
COMMERCIAL REAL ESTATE
License 134



EXCELLENT RE-DEVELOPMENT OPPORTUNITY FOR SALE

KM 3.3, PR-844, CUPEY BAJO WARD, SAN JUAN, PUERTO RICO

PROPERTY DETAILS

This mixed-use property comprises a 14-story tower with 44 residential apartment units pending completion, and an unfinished 18,300 SF commercial building with 2 office levels and supporting parking garage holding 149 stalls. It benefits from its excellent location within the Cupey Ward of San Juan, just steps from the Galería Pacífico Shopping Center and the highly transited State Road PR-199 (Las Cumbres Avenue). Don't miss this excellent re-development opportunity to deploy CDBG funds.

SITE AREA

3,946.23 square meters

BUILDING AREA

Residential Bldg.: 44 units (1,194 to 1,894 SF ea.)
Commercial Bldg.: approx. 18,300 SF

ZONING

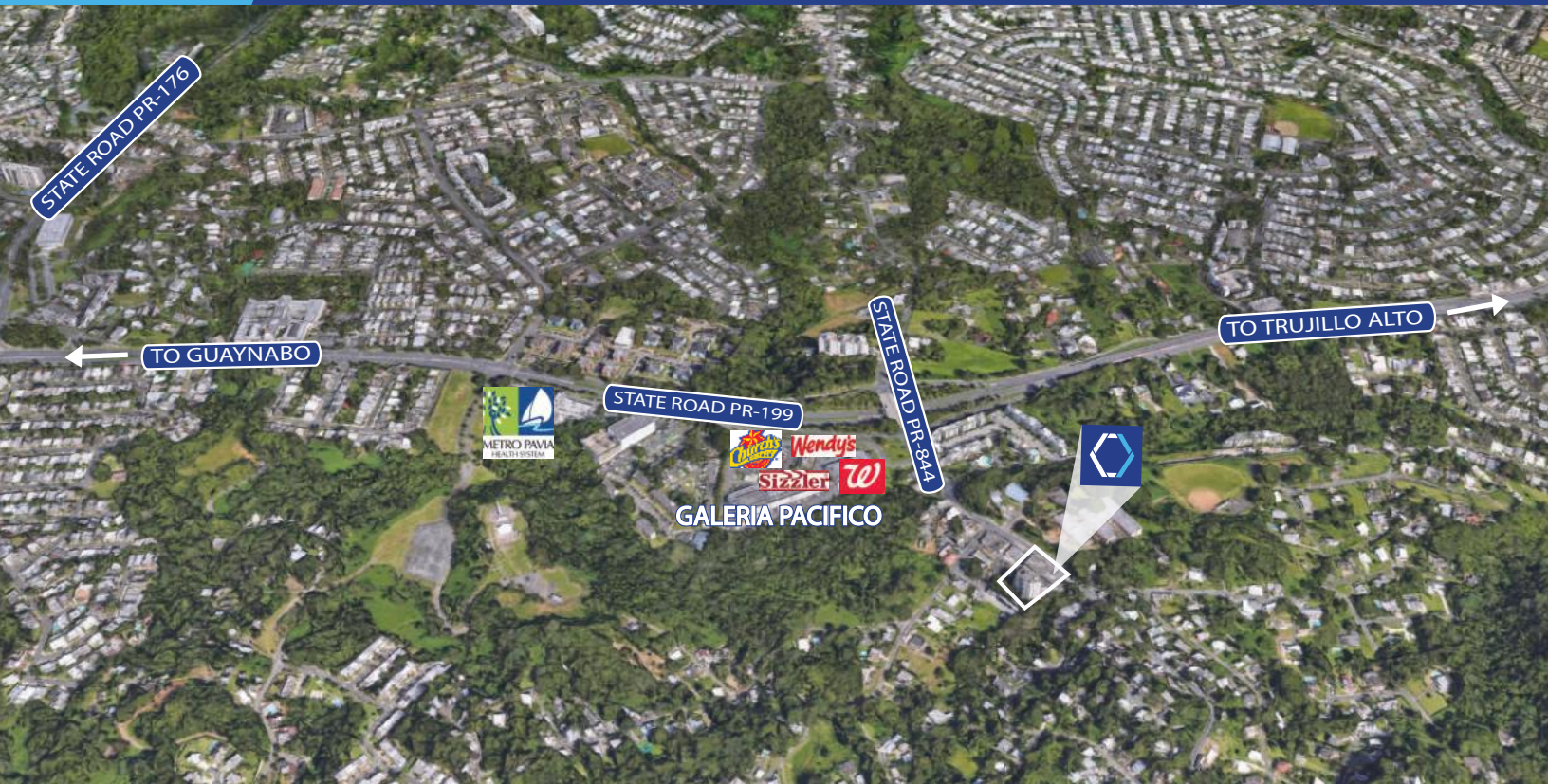
C-1 (commercial) and R-3 (residential)

COORDINATES

18.354056 N, -66.039661 W

FOR MORE INFORMATION VISIT WWW.CHRISTIANSENCOMMERCIAL.COM

KM 3.3, PR-844, CUPEY BAJO WARD, SAN JUAN, PUERTO RICO



American International Plaza
250 Muñoz Rivera Avenue Suite 350
Hato Rey, Puerto Rico 00918
www.christiansencommercial.com
787-778-7000



CAMERA SCAN FOR MORE DETAILS