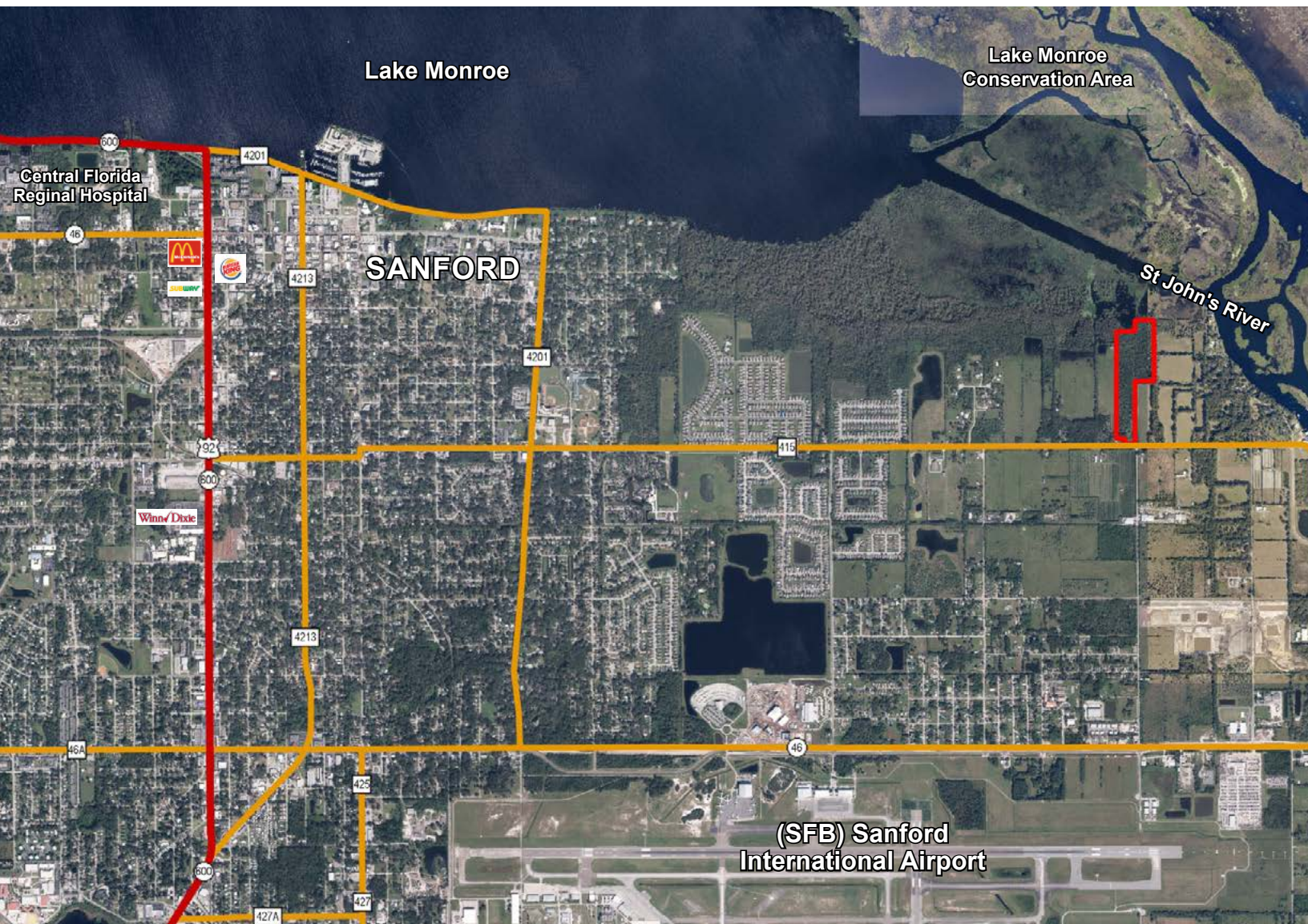


SANFORD RESIDENTIAL

SANFORD, FL | SEMINOLE COUNTY

22.6 ± ACRES TOTAL



SPECIFICATIONS & FEATURES

Acreage: 22.6 ± acres

Sale Price: \$2,950,000

Price per Acre: \$130,531

Site Address: 3560 Celery Ave, Sanford, FL 32771

County: Seminole

Permitted Lots: 88 possible

Zoning: A-1

FLU: Low Density Residential (LDR)

Road Frontage: 170 FT on Celery Ave

Uplands/Wetlands: 20.4 acres uplands/2.2 acres wetlands

Structures: There is an old abandoned house on the property that has no value.

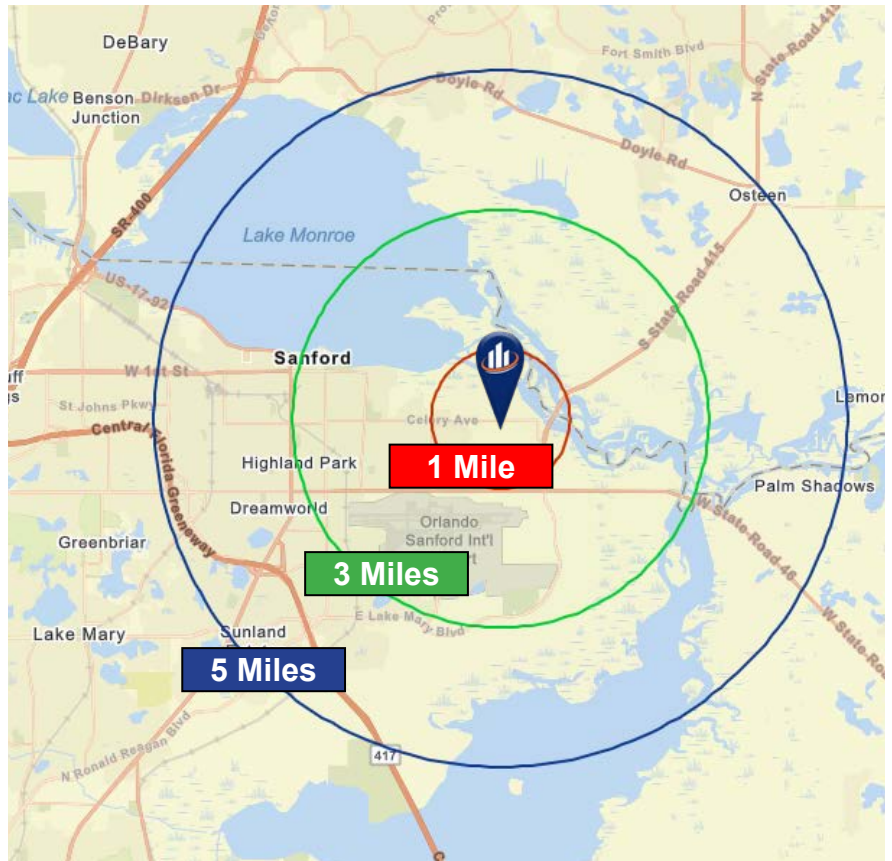
Utilities: Public water is immediately adjacent to the property and public sewer is currently being brought to the area.

Taxes: \$263.27 (2019)



Sanford Residential is located in Seminole County's top-rated school district and is in close proximity to regional universities and colleges. It is also located near shopping, dining, beaches, and major highways, including I-4 and State Road 417. Public water is immediately adjacent to the property and public sewer is currently being brought to the area.

Mile Radius Map



LOCATION & DRIVING DIRECTIONS

Parcel IDs: 28193130001800000

GPS Location: -81.22312, 28.80149

Driving Directions:

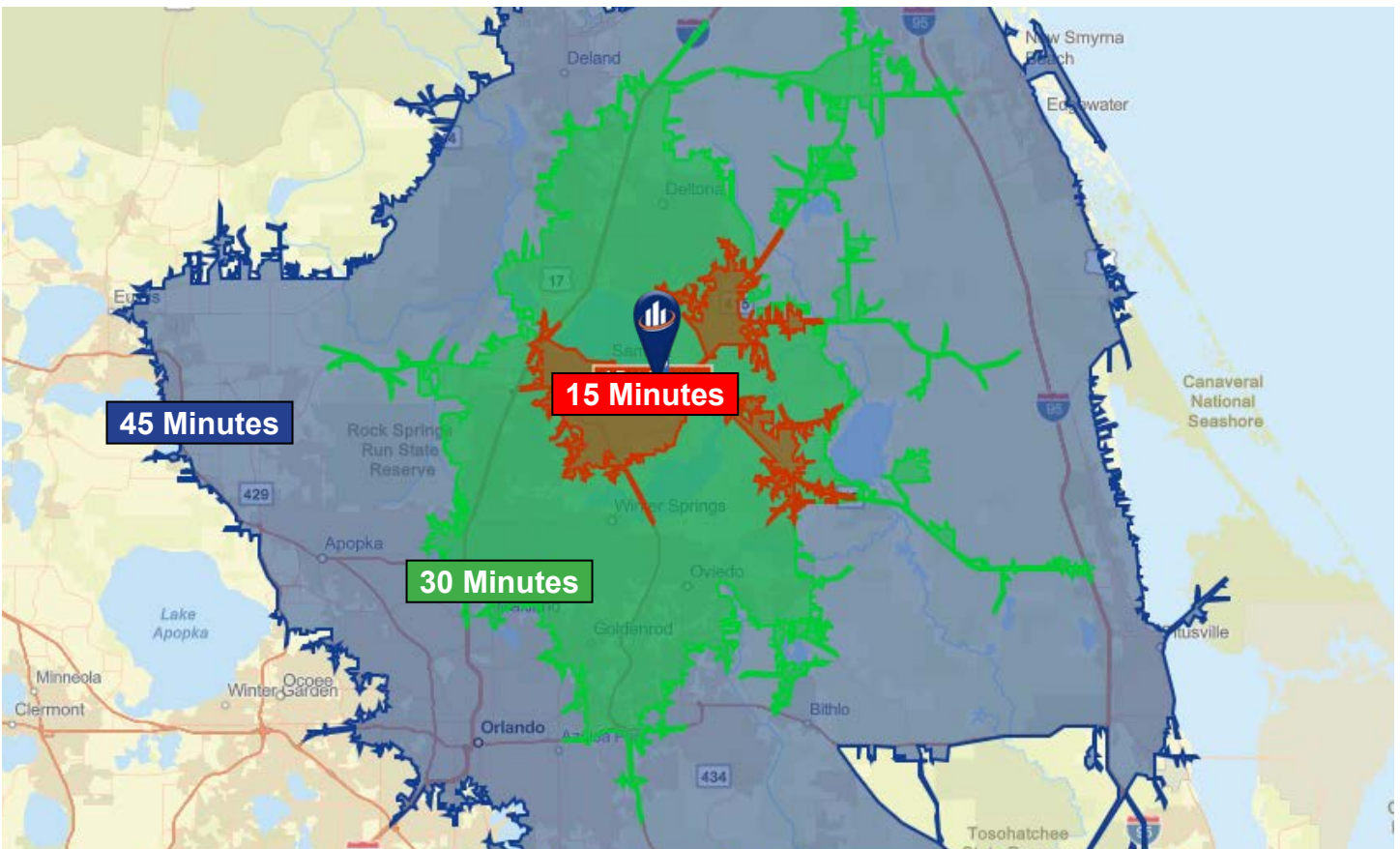
- In Sanford, FL go east from US 17/92 on 13th St 1/2 mile to Sanford Ave
- Go left on Sanford Ave one block to Celery Ave.
- Go east on Celery Ave 2.5 miles, property will be on the left.

Showing Instructions: Contact the listing agents for more information.

88 possible lots!



Drive Time Map





114 N. Tennessee Ave.
3rd Floor
Lakeland, FL 33801

22.6 ± Acres • 88 possible lots!

Located in Seminole County's top-rated school district and is in close proximity to regional universities and colleges
Near shopping, dining, beaches, and major highways, including I-4 and State Road 417

Visit SVNsaunders.com and search for: **Sanford Residential**

David Hitchcock, ALC, CCIM, 863.272.7155 | david.hitchcock@svn.com
Clay Taylor, ALC, 863-774-3532 | clay.taylor@svn.com



LAKELAND OFFICE:
114 N. Tennessee Ave. 3rd Floor
Lakeland, FL 33801
863.648.1528 - Main Office

LAKE CITY OFFICE:
356 NW Lake City Avenue
Lake City, FL 32055
386.438.5896

©2019 SVN | Saunders Ralston Dantzler Real Estate. All SVN® Offices Independently Owned and Operated
Saunders Ralston Dantzler Real Estate is regarded as an authority on all types of Florida land and conservation easements, transacting over \$2.5 billion in sales since 1996. Offering land, forestry, and conservation easement real estate services through Saunders Ralston Dantzler Real Estate and the Saunders Real Estate Forestry Group, the Saunders team of land professionals offers advisory and transactional services through their home office in Lakeland, FL, the North Florida office in Lake City, FL, and the South Georgia office in Thomasville, GA. We provide services to land and commercial clients through our commercial real estate brokerage, Saunders Ralston Dantzler Real Estate.

