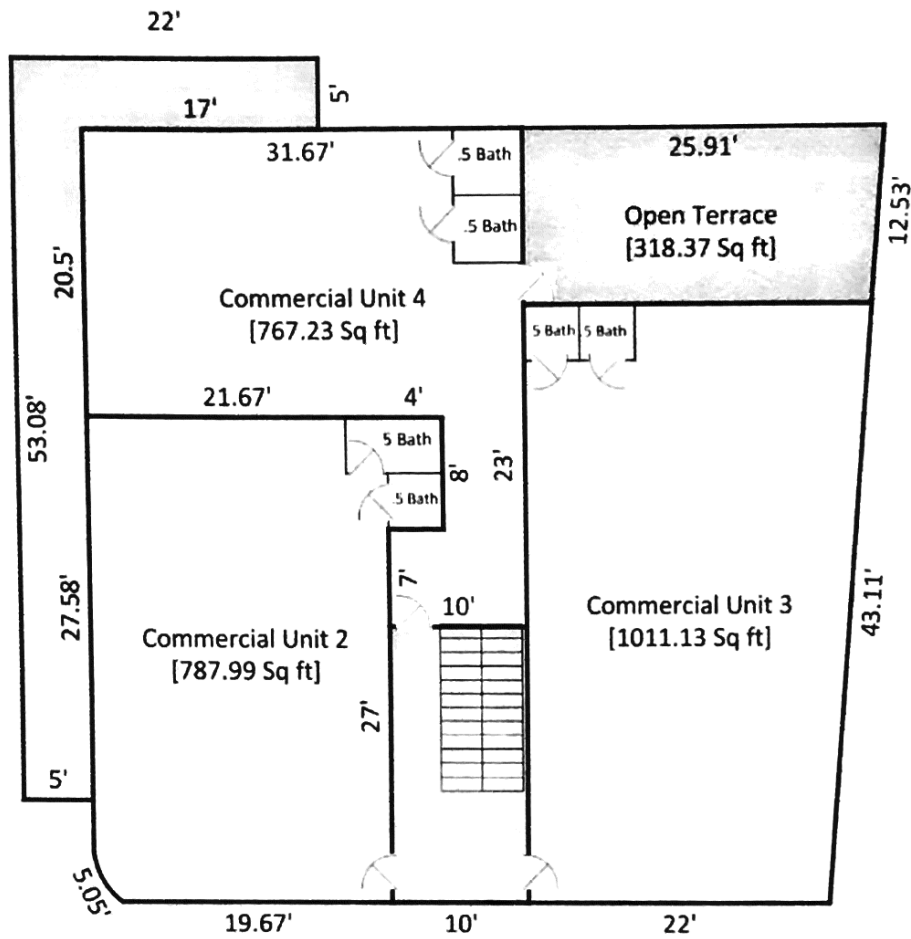


TOTAL Sketch by a la mode, inc.

**Area Calculations Summary**

Living Area		Calculation Details	
Commercial Unit 1	2962.76 Sq ft	$24.34 \times 5 = 121.7$	
		$10.67 \times 4.42 = 47.16$	
		$51.08 \times 21.67 = 1106.9$	
		$35.5 \times 10 = 355$	
		$55.5 \times 22 = 1221$	
		$0.5 \times 55.5 \times 4 = 111$	
<b>Total Living Area (Rounded):</b>	<b>2963 Sq ft</b>		
Non-living Area			
Staircase	200 Sq ft	$20 \times 10 = 200$	
Open Porch	46.16 Sq ft	$4.42 \times 9 = 39.78$	
		$0.5 \times 4.42 \times 2 = 4.42$	
		Arc = 1.96	

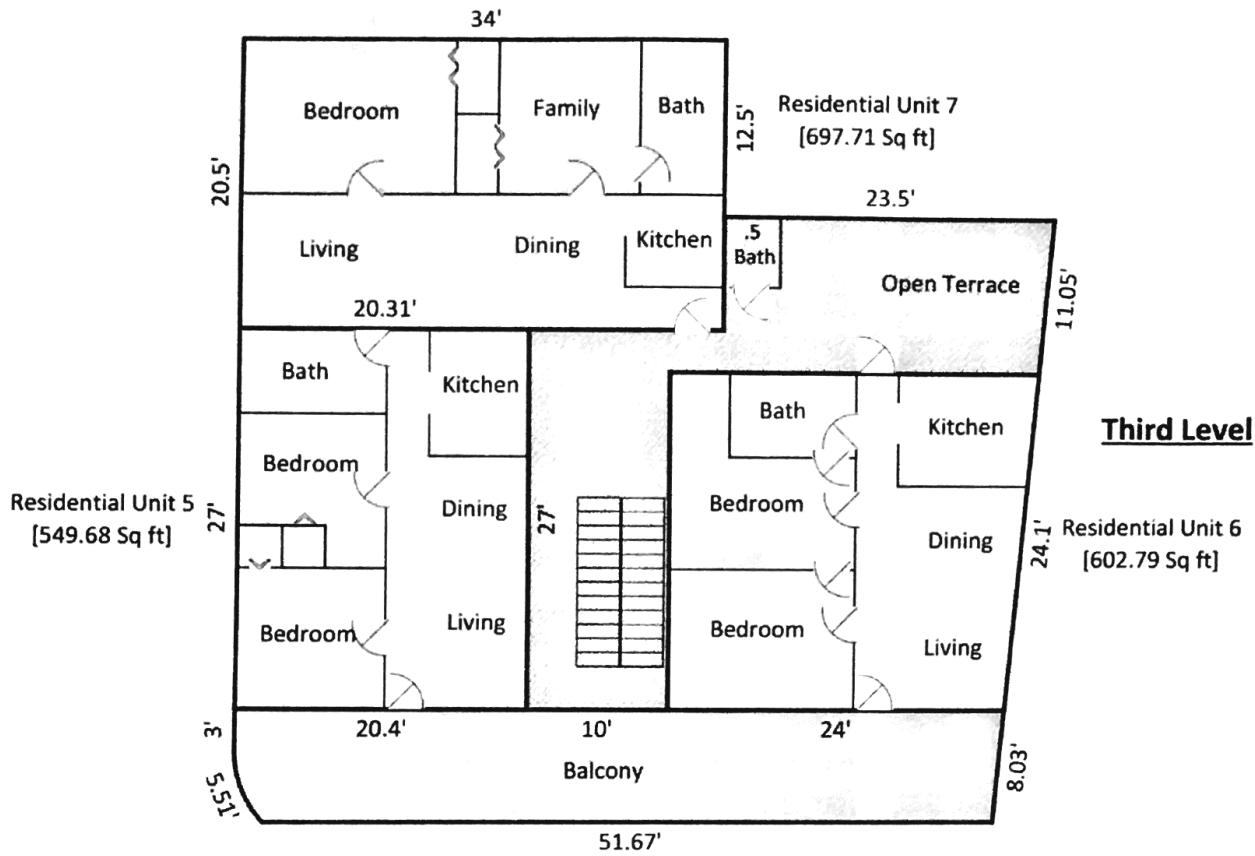


**Second Level**

TOTAL Sketch by a la mode, inc.

**Area Calculations Summary**

Living Area		Calculation Details	
Commercial Unit 2	787.99 Sq ft	$8 \times 4 = 32$	
		$21.67 \times 30.58 = 662.67$	
		$4.42 \times 19.67 = 86.94$	
		$0.5 \times 4.42 \times 2 = 4.42$	
		Arc = 1.96	
Commercial Unit 4	767.23 Sq ft	$20.5 \times 25.67 = 526.24$	
		$10 \times 7 = 70$	
		$28.5 \times 6 = 171$	
Commercial Unit 3	1011.13 Sq ft	$43 \times 22 = 946$	
		$0.5 \times 43 \times 3.03 = 65.13$	
<b>Total Living Area (Rounded):</b>	<b>2566 Sq ft</b>		
Non-living Area			
Staircase	200 Sq ft	$10 \times 20 = 200$	
Balcony	350.4 Sq ft	$5 \times 17 = 85$	
		$53.08 \times 5 = 265.4$	
Open Terrace	318.37 Sq ft	$12.5 \times 25.03 = 312.87$	
		$0.5 \times 12.5 \times 0.88 = 5.5$	



TOTAL Sketch by a la mode, inc.

**Area Calculations Summary**

Living Area		Calculation Details	
Residential Unit 6	602.79 Sq ft	$24 \times 24 = 576$	$0.5 \times 24 \times 2.23 = 26.79$
Residential Unit 5	549.68 Sq ft	$27 \times 20.31 = 548.45$	$0.5 \times 27 \times 0.09 = 1.23$
Residential Unit 7	697.71 Sq ft	$20.5 \times 34 = 697$	$0.5 \times 20.5 \times 0.07 = 0.71$
<b>Total Living Area (Rounded):</b>	<b>1850 Sq ft</b>		
Non-living Area			
Balcony	429.13 Sq ft	$0.5 \times 8 \times 0.74 = 2.98$	$8 \times 51.67 = 413.36$
		$0.5 \times 4.97 \times 1.99 = 4.95$	$3.03 \times 1.99 = 6.02$
		$0.5 \times 3.03 \times 0.01 = 0.02$	Arc = 1.81
Open Terrace and Staircase	534.14 Sq ft	$10 \times 24 = 240$	$3 \times 13.76 = 41.27$
		$11 \times 22.48 = 247.24$	$0.5 \times 11 \times 1.02 = 5.63$