

**LAND
For Sale**



9.53 ACRES VACANT LAND

PROPERTY HIGHLIGHTS

- Vacant land in the path of growth;
- High and dry!;
- 9.53 acres total - 632' x 659' MOL;
- Mostly wooded, with mature trees;
- Located just south of County Line Road and north west of the Suncoast Parkway;
- Near Crews Lake Wilderness Park and Jumping Gully Preserve;
- Zoning: Agricultural Residential District.

Offered at: ~~\$99,900~~

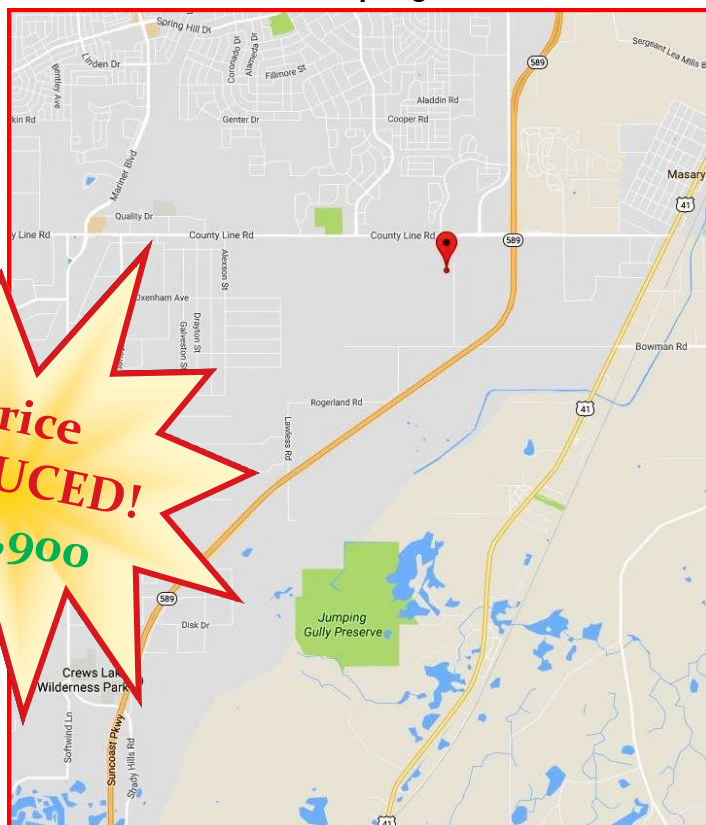
**Price
REDUCED!
\$84,900**

FOR INFORMATION, CONTACT:

Charles R. Grey
Office: (727) 849-2424
Chuck@figrey.com

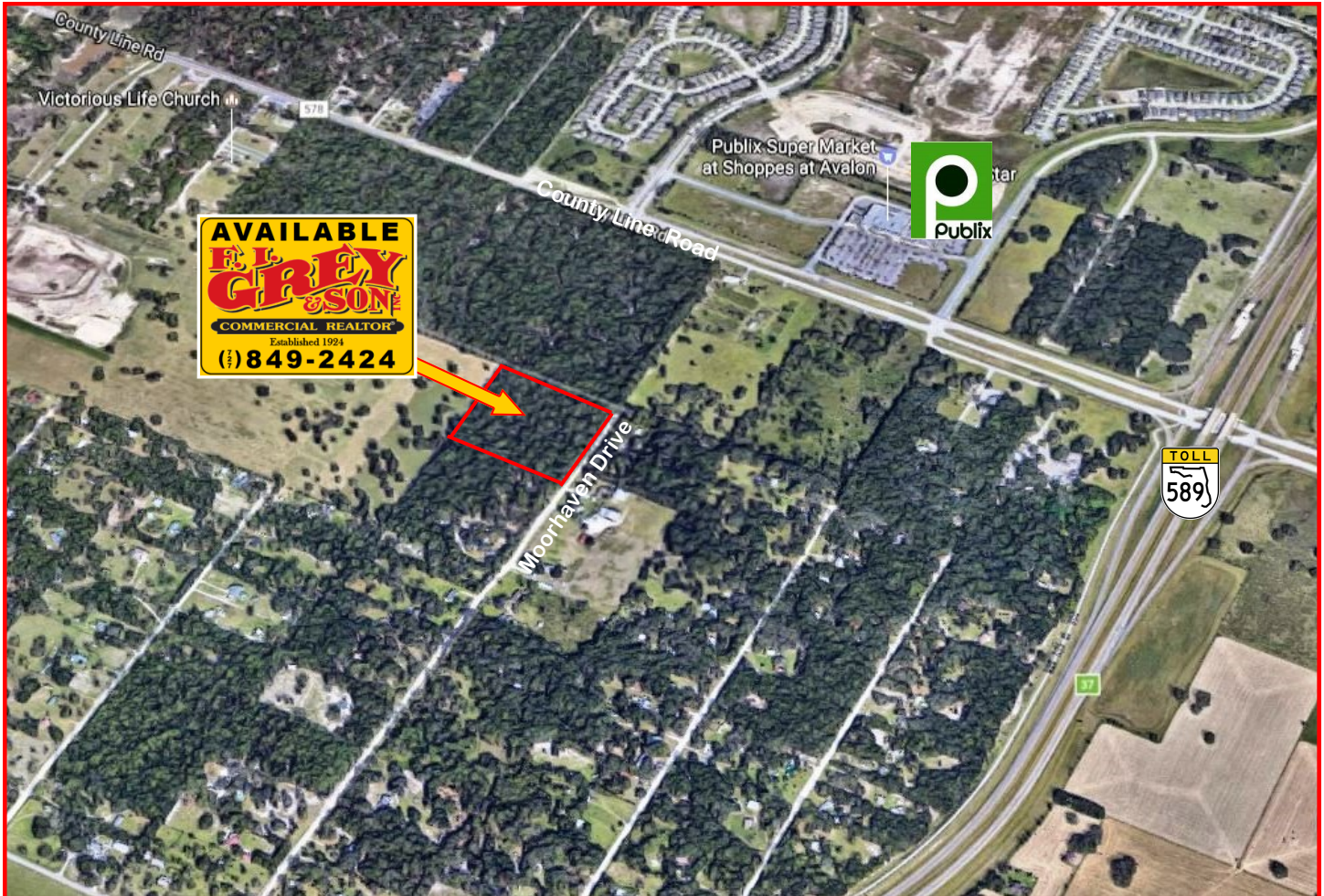


Moorhaven Drive, Spring Hill, FL 34610



6328 US HWY 19, NEW PORT RICHEY, FL 34652 (727) 849-2424 WWW.FIGREY.COM

MOORHAVEN DRIVE SPRING HILL FL 34610



DEMOGRAPHICS

<i>Radius</i>	<i>1-Mile</i>	<i>3-Mile</i>	<i>5-Mile</i>
Population:	476	17,661	50,167
Households:	168	6,692	19,528
Average HH Inc:	\$70,506	\$67,827	\$66,672

FOR INFORMATION, CONTACT:

Charles R. Grey
Office: (727) 849-2424
Chuck@figrey.com



Serving Florida for over 90 years!



COMMERCIAL REALTOR®
Established 1924



6328 US HWY 19, NEW PORT RICHEY, FL 34652 (727) 849-2424 WWW.FIGREY.COM

The information given herewith is obtained from sources we consider reliable. We are not responsible for misstatements of facts, errors, omissions, changes in terms or conditions, or withdrawal from the market without prior notice.